

# Coronavirus Relief Fund Final Report

Jack Liang  
Director of Support Services  
Chief Financial Officer

Erin Doyle  
County Administrative Office  
Government Relations Manager

April 20, 2021



County Administrative Office / Department of Support Services

[co.washington.or.us](http://co.washington.or.us)



## CARES Act Grants and Programs

### **Two Goals:**

- 1. To provide the most positive impact for the most amount of people**
- 2. To maintain adherence to the CARES Act and guidelines provided by the U.S. Department of the Treasury**



## CARES Act Grants and Programs

### **Four Principles:**

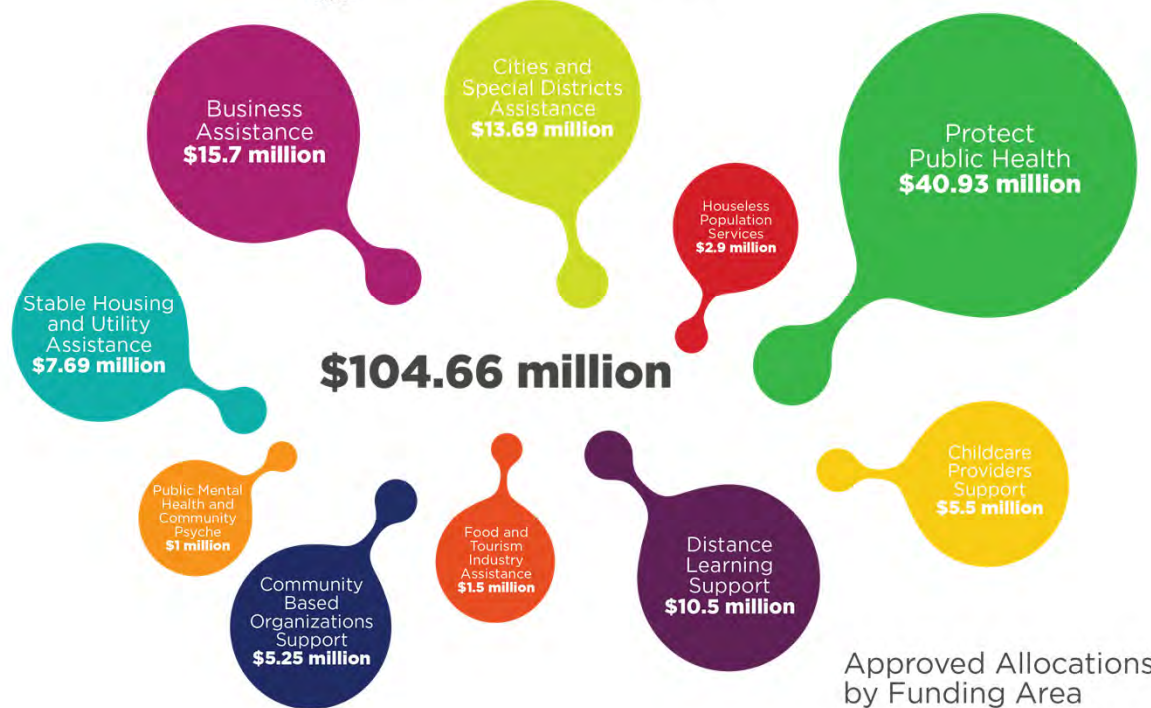
- 1. Protect Public Health**
- 2. Stabilize Local Economy**
- 3. Support Community-based Organizations**
- 4. Mental Health and Community Psyche**



# CARES Act Grants and Programs Allocations



## CARES Act Coronavirus Relief Fund

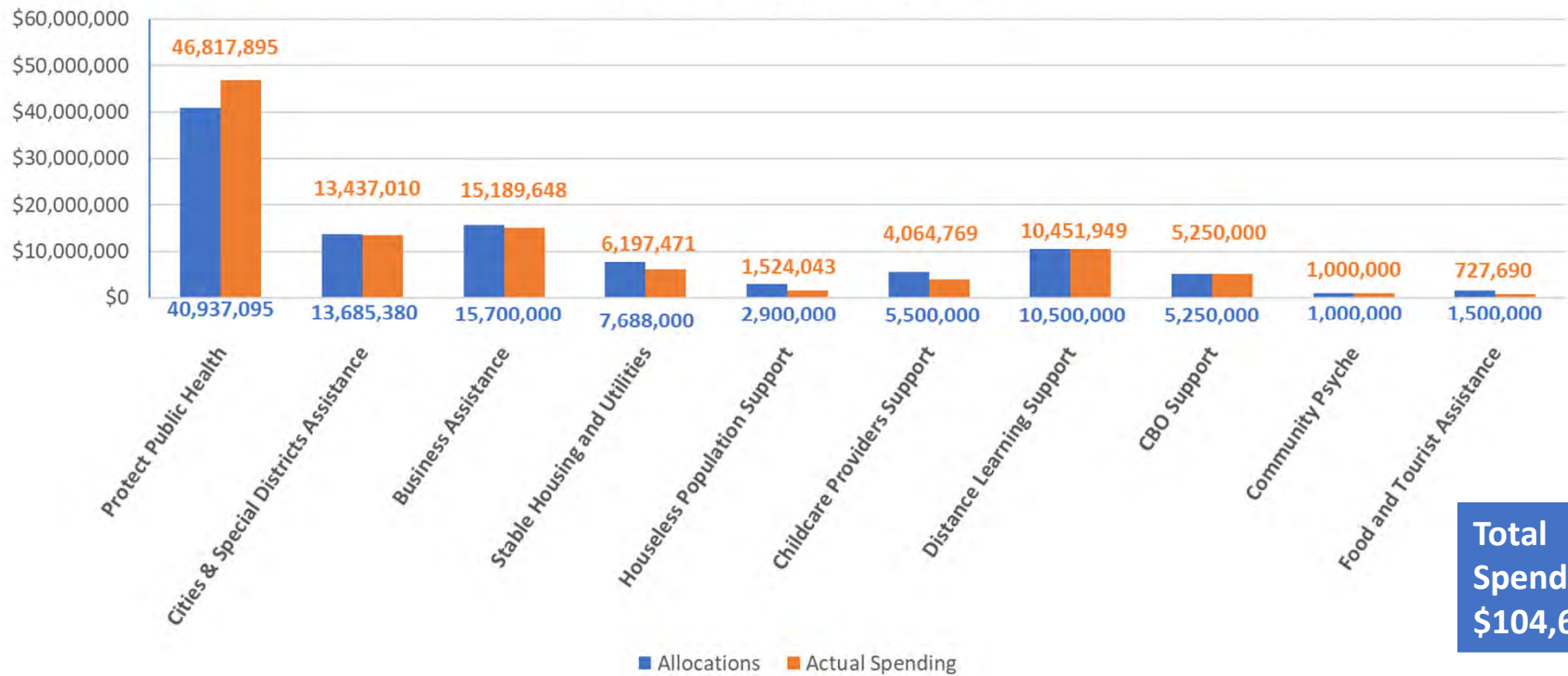


Approved Allocations  
by Funding Area



# CARES Act Grants and Programs

Total Allocations vs. Actual Spending







# Protecting Public Health

## County COVID-19 Responses

- Original allocation: \$54 million
- Final allocation: \$40.9 million + any underspent amount
- Actual spending: \$46.8 million



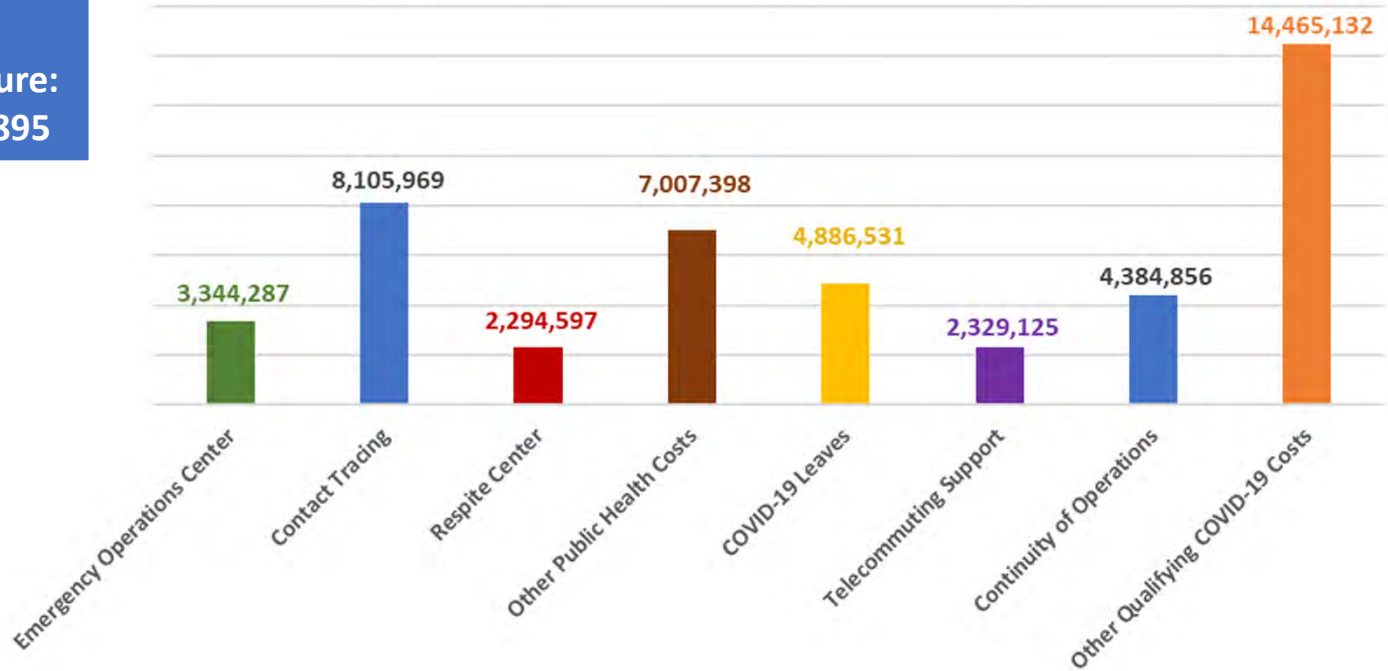


# Protecting Public Health

## County COVID-19 Responses

Protect Public Health Expenditures

Total Expenditure: \$46,817,895

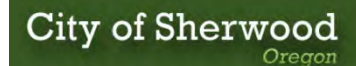




# Protecting Public Health

## Cities and Special Districts Assistance

- Total allocation: \$14.69 million
  - \$7 million original
  - \$1 million funding exchanged from the Mental Health and Community Psyche Program
  - \$6.69 million reallocated from Protect Public Health
- Actual spending: \$14.44 million







# Protecting Public Health

## Cities and Special Districts Assistance

CITY	REIMBURSEMENT AMOUNT
Banks	\$10,178
Beaverton	\$1,367,097
Cornelius	\$141,701
Forest Grove	\$271,227
Hillsboro	\$1,893,705
King City	\$114,114
North Plains	\$49,068
Sherwood	\$1,456,912
Tigard	\$587,222
Tualatin	\$579,922

SERVICE DISTRICT	REIMBURSEMENT AMOUNT
Banks Fire District #3	\$57,114
Clean Water Services	\$1,600,621
Gaston Rural Fire District	\$8,328
Tigard Tualatin Aquatic District	\$64,620
Tualatin Hills Park and Recreation District	\$3,720,815
Tualatin Valley Fire & Rescue	\$1,311,919
Tualatin Valley Irrigation District	\$7,448
Tualatin Valley Water District	\$175,000

These numbers do not include the reallocation into this fund for the community psyche programs.



# Stabilize Local Economy

## Business Assistance

- Original allocation: \$15 million
- Final allocation: \$15.7 million
- Actual spending: \$15.2 million
  - Small business grants: \$10.5 million
    - Unincorporated: \$3.3 million
    - Incorporated: \$7.2 million
  - SBEA reimbursements: \$2.5 million
  - Business recovery centers: \$0.6 million
  - Other special needs assistance: \$1.6 million

### Grants

- County provided 1,102 grants in four rounds

### Business recovery

- 2,127 hours of direct consultation
- 417,762 pieces of PPE distributed

### Workforce investment

- 768 community members served
- 138 youth served
- 154 completed course for job training





# Stabilize Local Economy

## Stable Housing and Utilities Assistance

- Total allocation: \$7.7 million
  - \$6 million for stable housing assistance
  - \$3 million for utility assistance
  - -\$1.3 million reallocated to protect public health

**RENT** 4,063 individuals  
1,321 households

**MORTGAGE** 150 individuals  
32 households

- Actual spending:
  - Stable housing assistance: \$5.6 million
  - Utility assistance: \$0.6 million

**WATER** 3,251 individuals  
1,265 households

**WASTE** 902 individuals  
371 households



# Stabilize Local Economy

## Houseless Population Support

- Total allocation: \$2.9 million
- Actual spending: \$1.5 million

Programs	# of Individuals Served	% Chronic Houseless	% Persons of Color
Family Promise Shelters	140	15%	32%
Safe Sleep Village	106	34%	19%
Safe RV Parking	57	9%	16%
Winter Shelters	255	41%	26%
Hotel Vouchers	84	42%	14%





# Stabilize Local Economy

## Child Care Providers Assistance

- Total allocation: \$5.5 million
- Actual spending: \$4 million
  - 318 grants awarded to 292 grantees
  - 80% were small providers (0-1 FTE)
  - 99% of recipients responding to county survey remain in business

RACE/ETHNICITY	CHILD CARE GRANT AWARDEES	STATE AVERAGE
American Indian	<1% (N=1)	1%
Asian	8% (N=24)	4%
Black	1% (N=4)	3%
Middle Eastern/North African	1% (N=3)	State Source Includes in White
Hispanic/Latinx/Spanish	37% (N=107)	19%
Native Hawaiian/Pacific Islander	<1% (N=2)	1%
White	42% (N=122)	70%
Multi Racial	4% (N=11)	1%
Declined to Answer	7% (N=20)	NA





# Stabilize Local Economy

## Distance Learning Support (School Districts)

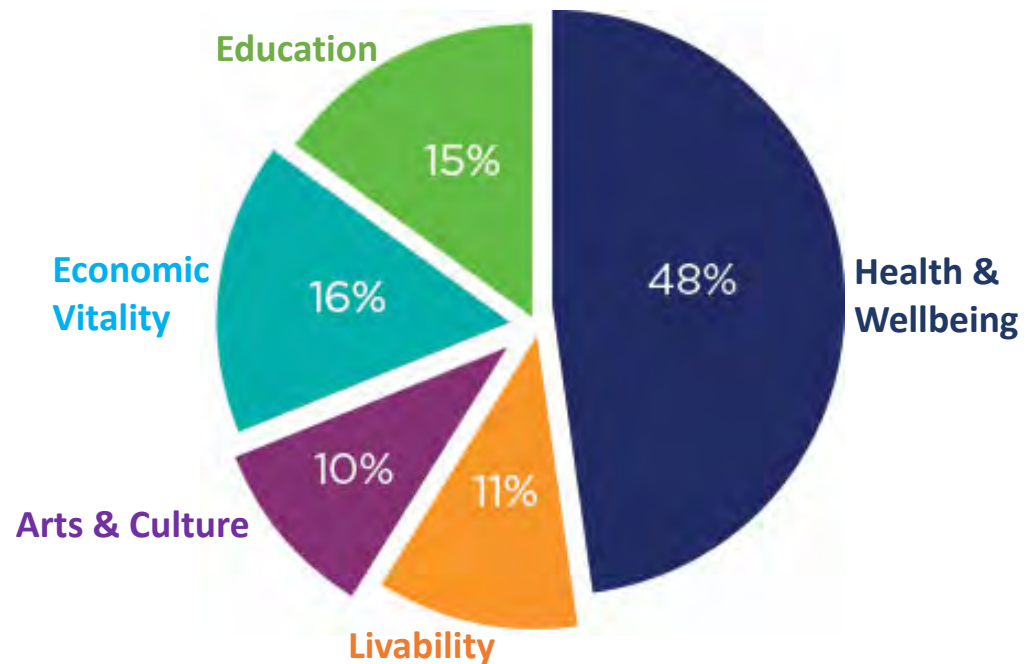
- Total allocation: \$10.5 million
- Actual spending: \$10.45 million
  - Partnered with Banks, Beaverton, Forest Grove, Hillsboro, Sherwood & Tigard-Tualatin school districts
  - Assistance covered students throughout the districts
  - Provided 1,615 reimbursements for childcare cost
  - Technology support for childcare providers to support student





# Support Community-based Organizations

- Total allocation: \$5.25 million
- Actual spending: \$5.25 million
  - 85 nonprofits provided grants
  - 18 culturally specific or responsive organizations
  - Priority categories
    - Arts & Culture
    - Economic Vitality
    - Education
    - Health & Wellbeing
    - Livability





# Support Community-based Organizations

## Education:

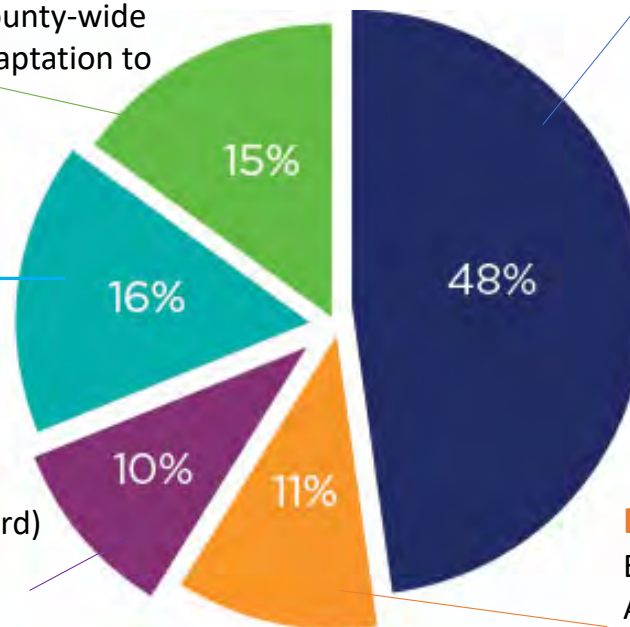
Example – Big Brother Big Sisters Columbia NW  
Provides mentorship to 216 children a year county-wide  
Grant covered personnel costs, and model adaptation to ensure mentors and kids connected

## Economic Vitality:

Example – Adelante Mujeres (Forest Grove)  
Provides education and empowerment for Latinas  
Grant covered lost revenues and supported technology improvements and client assistance needs

## Arts & Culture:

Example – Mirror Community Theatre (Tigard)  
Provides theatre performances, mostly to retired seniors  
Grant sustained future operations through preservation of sets and costumes as well as website improvements



## Health & Wellbeing:

Example - Westside Food Brigade (Beaverton)  
Provides emergency foods to over 180 families in Aloha, Beaverton & Hillsboro  
Grant allowed purchase of a refrigerated truck to provide fresh food donated by local grocery stores

## Livability:

Example – Aloha Community Library Association (Aloha)  
Provides library services using a non-profit reliant on fundraising  
Grant sustained & modified library services



# Mental Health and Community Psyche

- Total allocation: \$0 million
  - Original allocation: \$1 million
  - -\$1 million reallocated to city and special district assistance after funding exchange
- Actual spending: \$0 million with \$1 million of community impact
  - Partnerships with park districts to create COVID-safe community events in person & online





## Food and Tourist Industry Assistance

- Total allocation: \$1.5 million
- Actual spending: \$0.7 million
  - 628 businesses with 740 facilities
  - Average grant per business: \$1,124







# CARES Act Grants and Programs Actual Spending



## CARES Act Coronavirus Relief Fund



Actual Spending  
by Funding Area



## Treasury Grant Reporting

- Report on March – June 2020 expenditures (due 9/21/2020) - **Completed**
- Report on July – September 2020 expenditures (due 10/13/2020) - **Completed**
- Report on October – December 2020 expenditures (due 1/11/2021) - **Completed**
- Anticipating to file final report by 4/12/2021



## Questions for the Board's Consideration

- In reviewing the draft report on the expenditures of the CRF resources, what more do you want to see in the document?
- Looking forward, can the Board designate two liaisons to participate on this new round of American Rescue Plan stimulus package allocations?



Thank you!

