

Steering Committee

March 17, 2022



**Center for Addictions
Triage and Treatment**
Washington County



WASHINGTON COUNTY
OREGON

Department of Health and Human Services

Meeting Overview

- Welcome and introductions
- Project updates
- Project planning
- Next steps



Project Updates: Site Selection

- Intensive Services Building: 17911 NW Evergreen Place
- Community Services Building: 5250 NE Elam Young Pkwy



Intensive Services Building

- WCCCA building for Intensive Services
 - Assessment and triage
 - Sobering, withdrawal management, stabilization, residential treatment
- Currently ~24,000 sq ft, would need to be expanded to ~35,000 sq ft
- County-owned, being vacated soon



Community Services Building

Zone challenges, two options:

- Request a zone change
- Request the City do a text change of existing zone



Project Updates: Measure 110

- In December, Washington County submitted an application for M110 funding:
 - CATT Capital Development gap funding
 - Behavioral Health Resource Network coordinator
- Total request: \$17M

Project Update: M110



- Review process and grant award has been delayed several times
- Still no outcome yet, the State hopes to have awards made in April



Project Update: Public Safety Work Group

- Guidance for the development and implementation of the center, especially around interface with public safety
- Key Focus Areas:
 - Neighborhood safety
 - Triage and transport protocols
 - Create diversion program
- Representation
 - Initially law enforcement agencies
 - Later expand to include criminal justice partners

Project Update: Public Safety Work Group

- Currently recruiting members from law enforcement agencies
- Will initially focus on neighborhood safety and transports to the center
- Later new members from judicial system and community corrections will be added to focus on interface with those systems and potential diversion opportunities



Project Update: Provider Selection

Single provider for Intensive Services:

- Assessment and Triage
- Sobering
- Withdrawal Management
- Stabilization
- Residential Services



Project Update: Provider Selection

- An RFP has been developed in collaboration with the locals CCOs who will fund most of the services
- Expect it to be published in early April
- Award in June



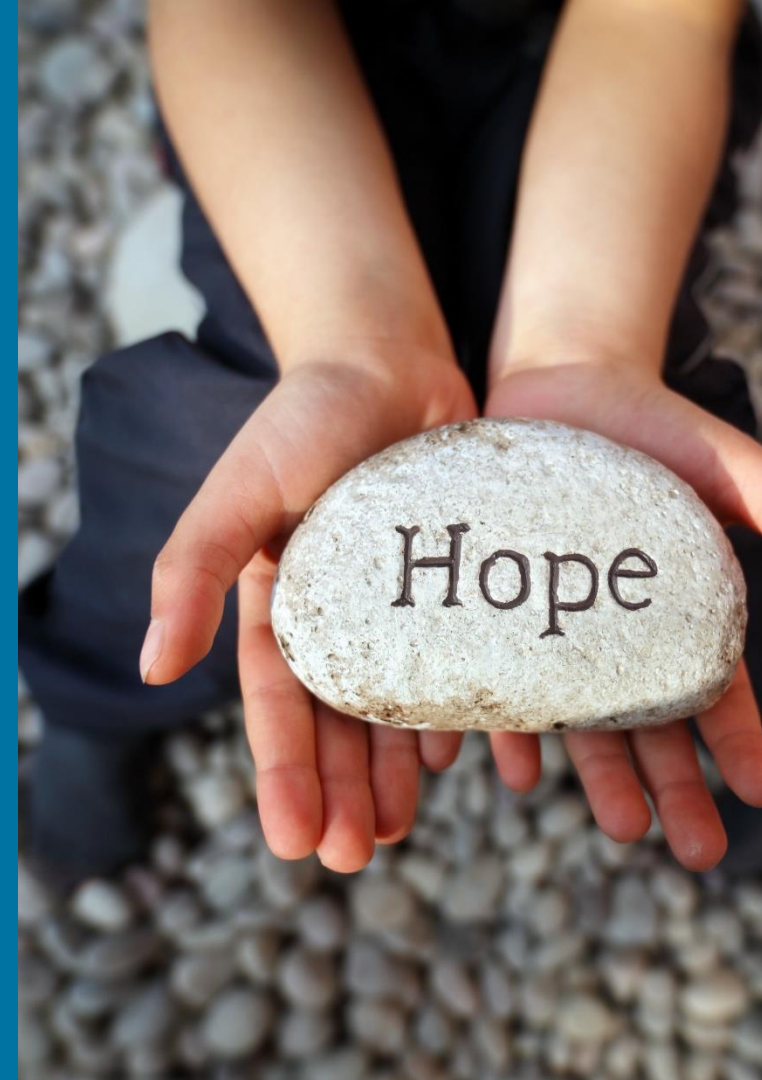
Discussion

- Anything else we need to be thinking about?



Project Planning

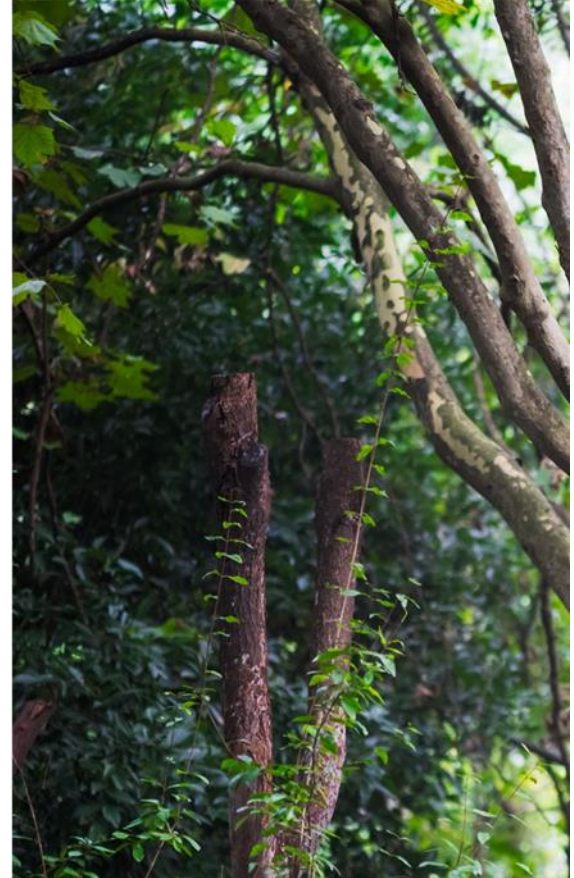
- Community Engagement
- Communications
- Project Organization
- Architectural Design
- Workforce
- Construction Plan



Project Planning: Community Engagement

Key strategic plan focus areas:

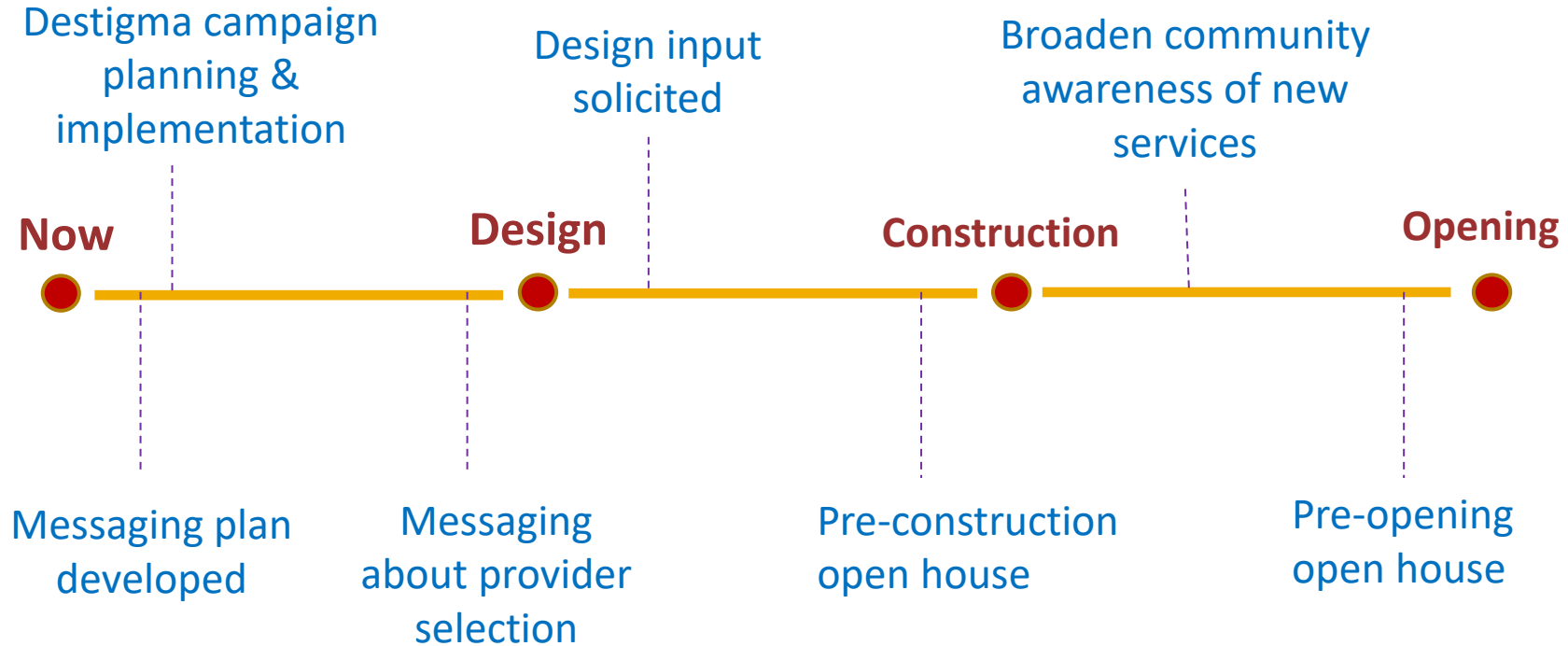
- Understand the community most impacted by the siting
- Communicate the need for more services
- Disseminate information about CATT
- Develop meaningful opportunities for community input
- Support local neighborhoods and businesses



Project Planning: Community Engagement

- Team planning session done on March 2nd
- Tasks Identified:
 - Develop written materials and messaging
 - Neighborhood outreach
 - Community meetings
 - Open house planning
 - Implementing community engagement plan
 - Role defining (provider, work groups)
 - Destigma campaign

Key Timelines for Community Engagement





Project Planning: Communications

- Key Focus areas:
 - Including equity and inclusion in our approach
 - Evaluating our efficacy of reaching our audience
 - Developing written material
 - Cadence of communication (briefings, newsletters, web updates)

Project Planning: Communications

- Destigma Campaign
 - \$30K from Trillium Health Plan
 - Focus on de-stigmatizing substance use
 - Sharing the need for CATT



You know me

My friends and I like to get together and have a few drinks. But I find myself drinking every night. I feel like I'm drinking way too much, but I can't help myself. I think I might have a problem.

You know me. I'm your neighbor, your co-worker, your family member, your friend. And I need help.

Recovery is possible. Help is available. Learn more about Washington County's plan to increase services for our community members who struggle with substance use.

 **Center for Addictions
Triage and Treatment**
Washington County

Project Planning: Organization

- Leadership Team
 - Partnership with provider selected through RFP
 - Increased role for Facilities Department
 - Partnership with the architectural firm selected through RFP
- Workgroups/Committees
 - Steering Committee
 - Facility Design
 - Public Safety Work Group
 - Community Engagement



Current Organization



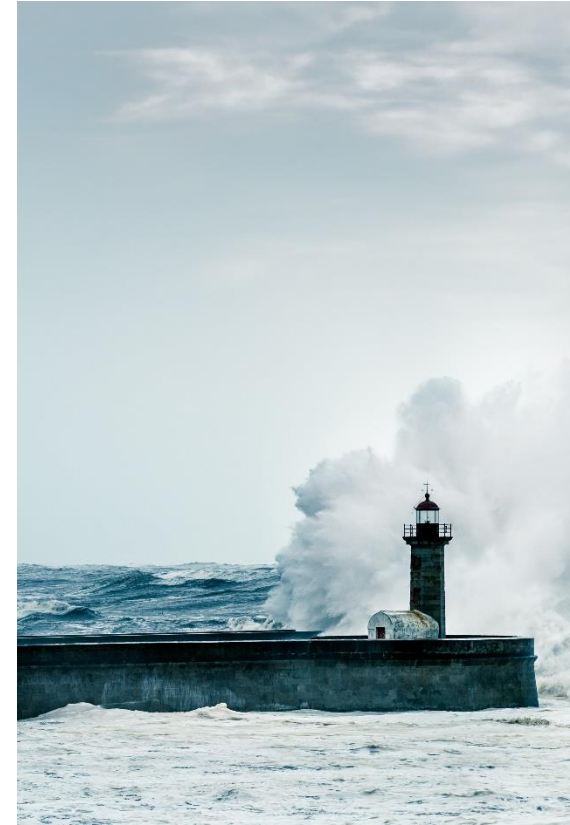
Strategic Planning

- Areas for strategic planning:
 - Facility design
 - Workforce
 - Systems interface
 - Media
 - Branding
- Team planning retreat will occur as part of the provider onboarding



Coordination with BHECN

- Behavioral Health Emergency Coordination Network (BHECN)
- Work occurring in Multnomah County to coordinate and develop behavioral health services
- Includes the creation of a sobering/stabilization program
- Plan for expansion of scope over time



Discussion

- Is this the right approach?
- Anything else we need to be thinking of?



Meeting Wrap Up



- Next meeting is May 19, 3-4:00 p.m.
- Don't forget to check out our CATT website:
www.co.washington.or.us/CATT