

Your Quarterly Townhall with Chair Kathryn Harrington



Role of the Commission in County Public Safety and Justice

July 10, 2024, 6:00pm – 6:50pm

Beaverton Main Public Library Meeting Room B
12375 SW 5th St. Beaverton OR 97005

www.WashingtonCountyOR.gov 1



What does Public Safety mean to you?

- **When you think Public Safety what do you think of?**
 - In your neighborhood?
 - In your wider community?
 - In our County, Washington County?
- **State – County – City**
 - State: Laws & Rules, Court Judges, State District Attorney (DA Kevin Barton for WA Co).
 - Counties in General: County Jail, Community Corrections Parole & Probation (supervision), juvenile youth court, Sheriff Rural Law Enforcement patrol.
 - Cities: Police Patrol



Washington County Public Safety & Justice

- **State – County – City**

- State: Laws & Rules, Court Judges, State District Attorney for WA Co (Kevin Barton)

- **Washington County Role = Distinct from the Cities**

- **Our public safety & justice services include supporting the courts, operating the Jail and the Community Corrections Center... prosecuting defendants ... overseeing probation and parole and juvenile services ...support for victims...and some law enforcement patrol areas.**
- **Prosecution:** County Budgets provide for District Attorney staff & operations, elected professional DA manages the department
Commission = BUDGET
- **Crime Victims Support: Community Corrections victims assistance, DA dept some victim support** **Commission = BUDGET**
- **County Jail:** Holds adults in custody charged for up to 1 year, prison individuals with just 1 year remaining on term, or adults staying between booking for charges and awaiting trial. Jail has 572 beds with current staffing constraints operating at 388. Ours is the second smallest County Jail of 36 Counties while our population is second largest in the State of Oregon. The elected professional Sheriff manages the Jail, manages the Sheriff Office department, **Commission provides BUDGET for personnel & operations**
- **Community Corrections:** Residential Center (121 Beds), Parole & Probation (evidence-based practices.) A professional Corrections Director manages CC, **Commission provides BUDGET.**
- **Juvenile Services:** Juvenile Court, Juvenile residential shelter (Harkins House), programs to prevent and reduce entry into the juvenile justice system (school district connection), secure shelter beds (contract with Multnomah County.) A professional Juvenile Services Director manages department, **Commission provides BUDGET.**
- **County Courthouse:** Counties are required to provide a building (and operations including security) of the County Circuit Court.
Commission = BUDGET
- **What about Law Enforcement/Police Patrol...** www.WashingtonCountyOR.gov



Law Enforcement Patrol in our County

- **Cities provide Police Patrol within their incorporated city boundaries**
 - City revenues, general fund use, and some cities have voter approved 5 year local option levies to support public safety operations (ex. Hillsboro, Beaverton, Tigard, Forest Grove.)
- **Washington County Sheriff's Office**
 - **Rural Law Enforcement Patrol** (about 30,000 residents, holding steady for decades)
 - **Urban Unincorporated Area Patrol** (Neighborhoods outside of Cities and within the Metro urban growth boundary) => Enhance Sheriff Patrol District, ESPD Law Enforcement Patrol, funded by an ESPD 5 year local option levy. UUA population has changed from 47% of County population to 35%.
(from high of 1980: ~116,000 of 246,000 residents, down to 2020: ~210,000 of over 600,000; Moving forward, the population growth of cities will steeply increase compared to UUAs, given land use policies for healthy urban areas.)
 - **Sheriff also provides coordinated special teams and some county-wide investigation support.** *Note: Sheriff for Washington County is elected by the voters, not appointed by the Board of Commissioners.*



Public Safety & Justice in our County

- Despite a constrained budget, **we're investing in our strained public safety system** to help deliver balanced public safety and justice services with a goal of **building community trust** despite our constrained General Fund.
 - Current budget **preserves alternatives to incarceration**, including **operating the Community Corrections Center at full capacity** for the first time since the pandemic.
 - We're also **fully supporting our specialty courts** that provide a **unique venue** for those dealing with mental illness, drug addiction or the challenges facing our veterans or those affected by domestic violence.
 - We're **continuing our work with culturally specific nonprofits to implement promising prevention and diversion programs to reduce juvenile crime.**



Public Safety & Justice in our County

- ***Thanks to our entire public safety team, including our dedicated workforce and our partners... That dedication helps us remain one of the safest communities in Oregon.***





Public Safety & Justice in our County

- **Numerous challenges** to this system have grown to a level where we need to leverage all possible resources **to build resilience and preserve community safety.**
 - **Aging and outdated facilities**
 - **Changes in laws that add complexity and extra workload year over year**
 - **Inadequate state funding to implement those changes**
 - **More people involved in our public safety & justice system**
 - **Staffing challenges (recruit, train, retain)**
 - **A General Fund unable to keep up with rising costs.**

It's become more and more challenging to deliver the services that not only hold offenders accountable, but also support crime prevention, victims' assistance and address the underlying drivers of criminal behavior.



Looking Ahead, Right-Size

- **There are 4 major priorities:**
 - Provide more funds for prevention, victim assistance and planning for future caseload growth.
 - Have adequate finances to implement mandates, including those directed toward Community Corrections and Juvenile services.
 - Need adequate resources to support our highly effective specialty courts and the ability to expand them.
 - Need to identify funding to replace our nearly 100-year-old courthouse.
- **Engaging with State legislators to address these concerns and the need for additional funding sources.**
- **Next 5-year Public Safety Local Option Levy will be on the November 2025 ballot, we're beginning discussions about how to structure that measure to help meet the growing demand on our system.**



Now, for your Questions!

Q & A TIME!



Chair@washingtoncountyor.gov

503-846-8681

Constituent Inquiry Form

<https://www.washingtoncountyor.gov/bcc>

Then 'Contact Board Members' menu on the right which takes you to the

[Constituent Inquiry | Washington County Forms](#)

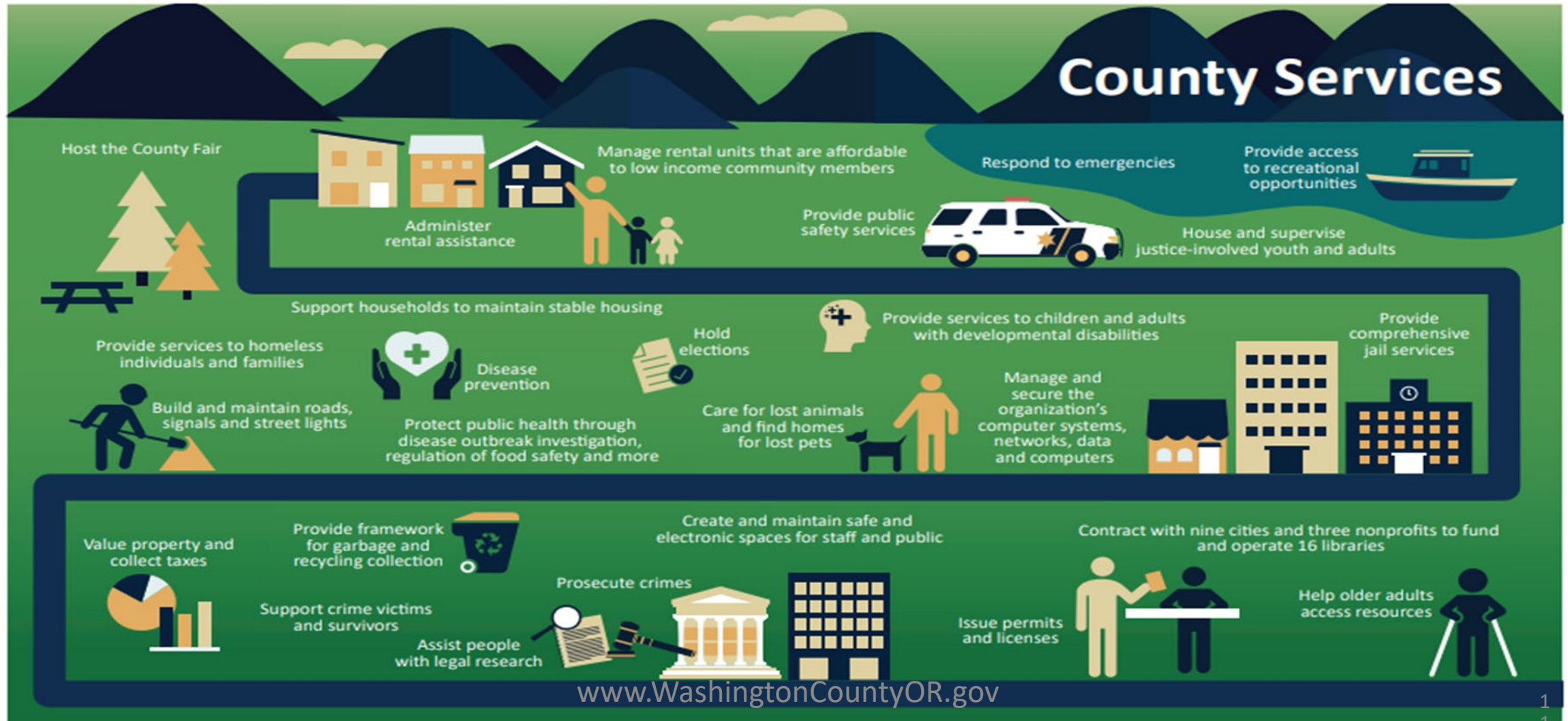
**Join us Thursday October 24, 6 - 7 pm at the Sherwood City Library,
for Chair Harrington's Final 2024 Town Hall!**



Other Slides

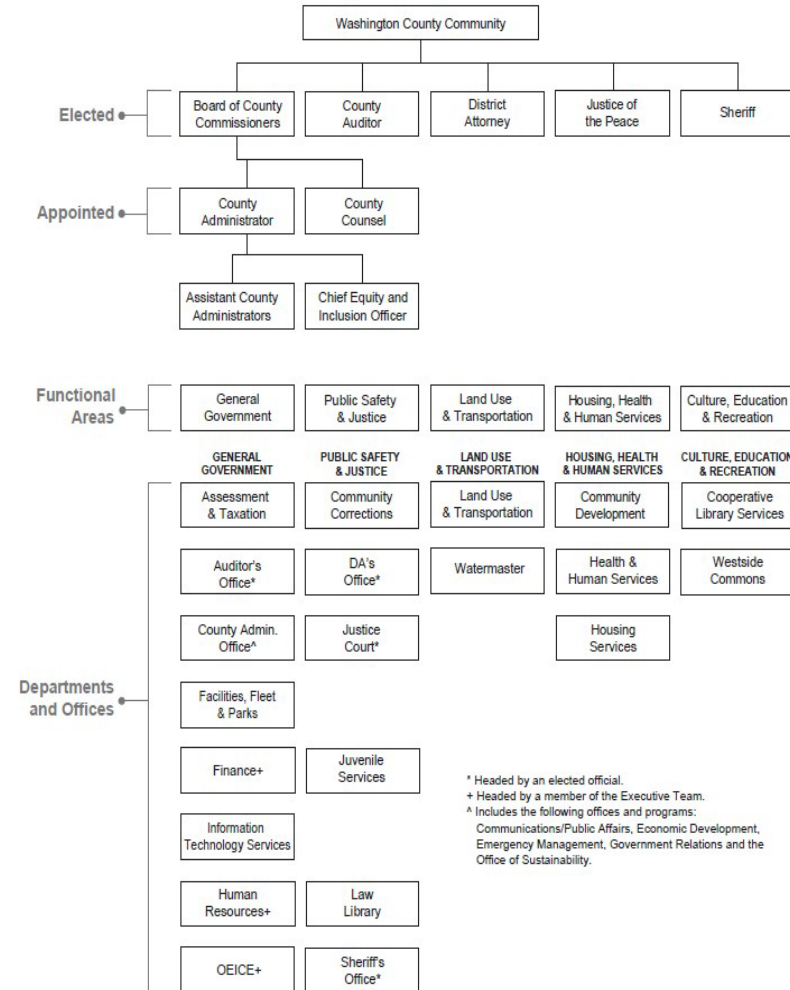
→ County Government: A lot of services to community

WASHINGTON COUNTY SERVICES DIAGRAM



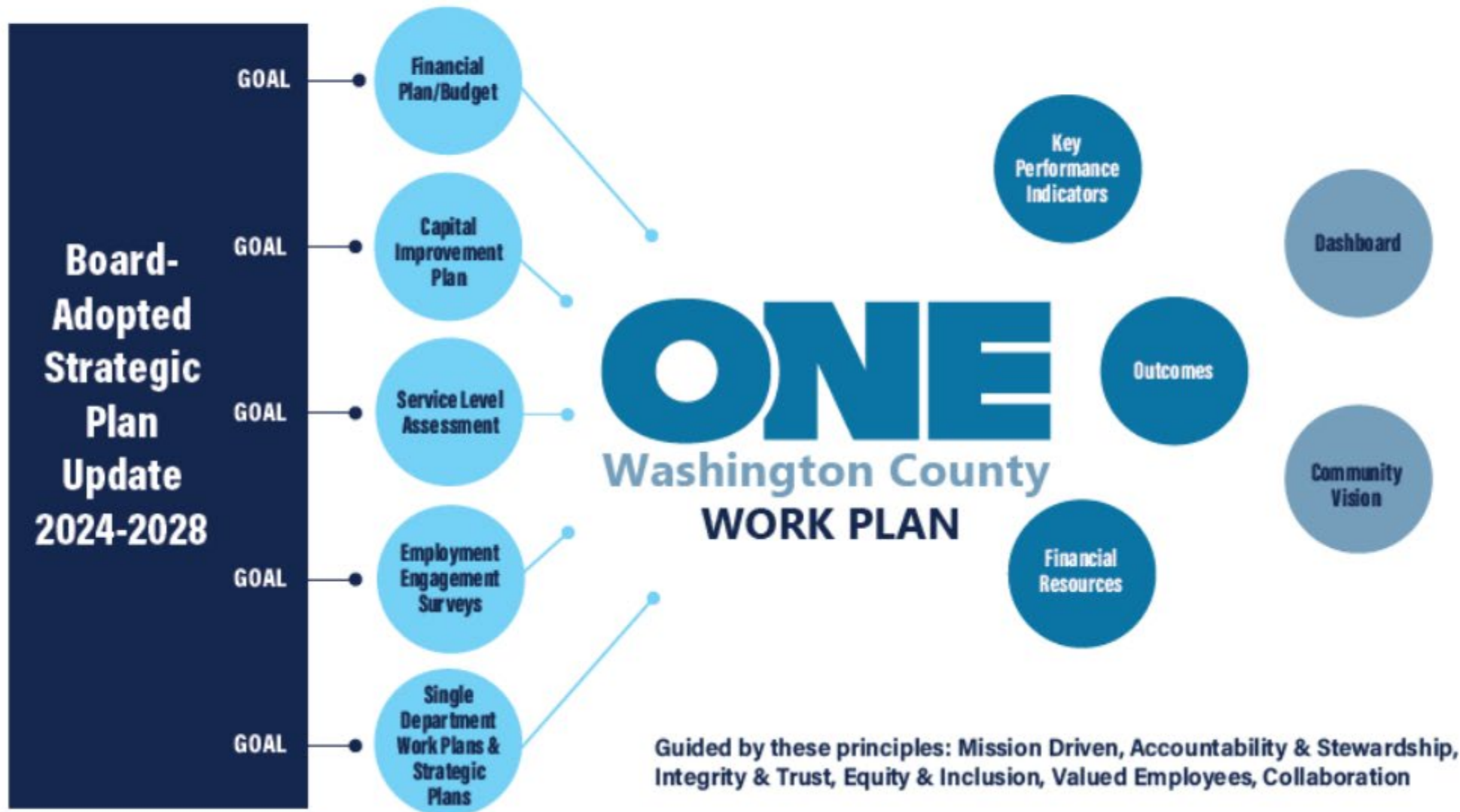


Many WA County service areas



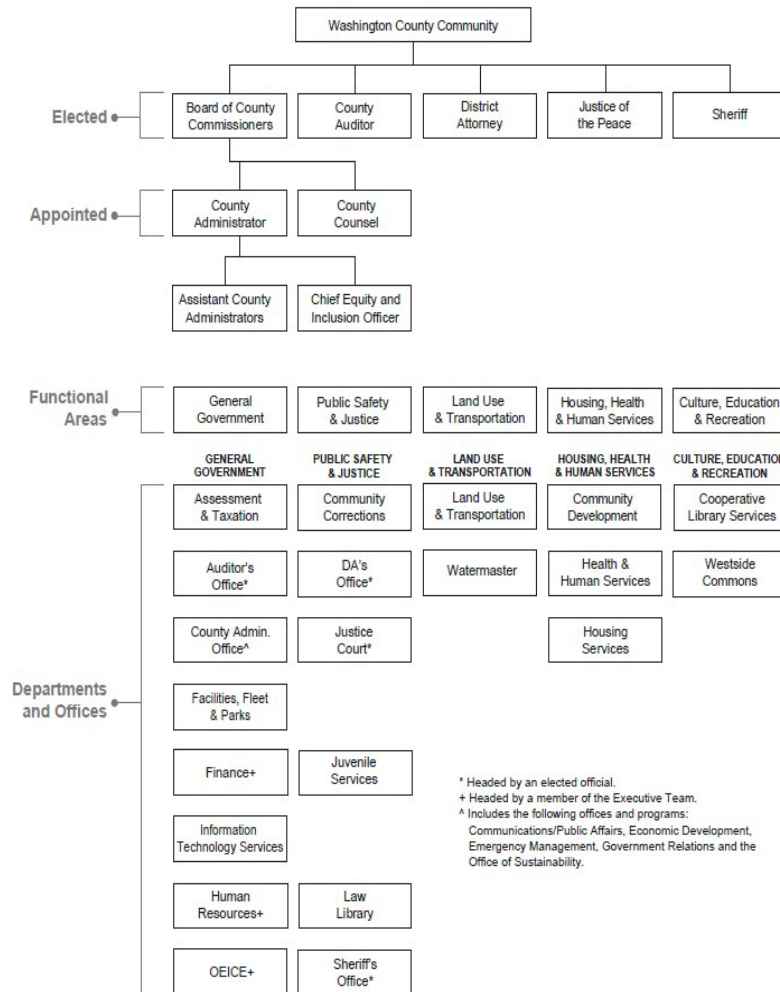
11/2022

STRATEGIC UPDATE AND WASHINGTON COUNTY MANAGEMENT SYSTEMS DIAGRAM





Many WA County service areas, different revenue sources



11/2022

- Discretionary, General Fund Revenue (example: property taxes & fees)
- Special Directed funds: special purpose areas (examples: grants from State and Federal Government for affordable housing, public health, transportation construction)
- Voter Approved Specific Purpose Funding
 - Washington County Public Safety Local Option Levy
 - Washington County Cooperative Library Local Option Levy
 - Metro Affordable Housing Bond
 - Metro Supportive Housing Service Tax revenue
 - UUA specific Enhanced Service Patrol District
 - UUA Urban Road Maintenance District Property Tax



Property Tax Revenue

