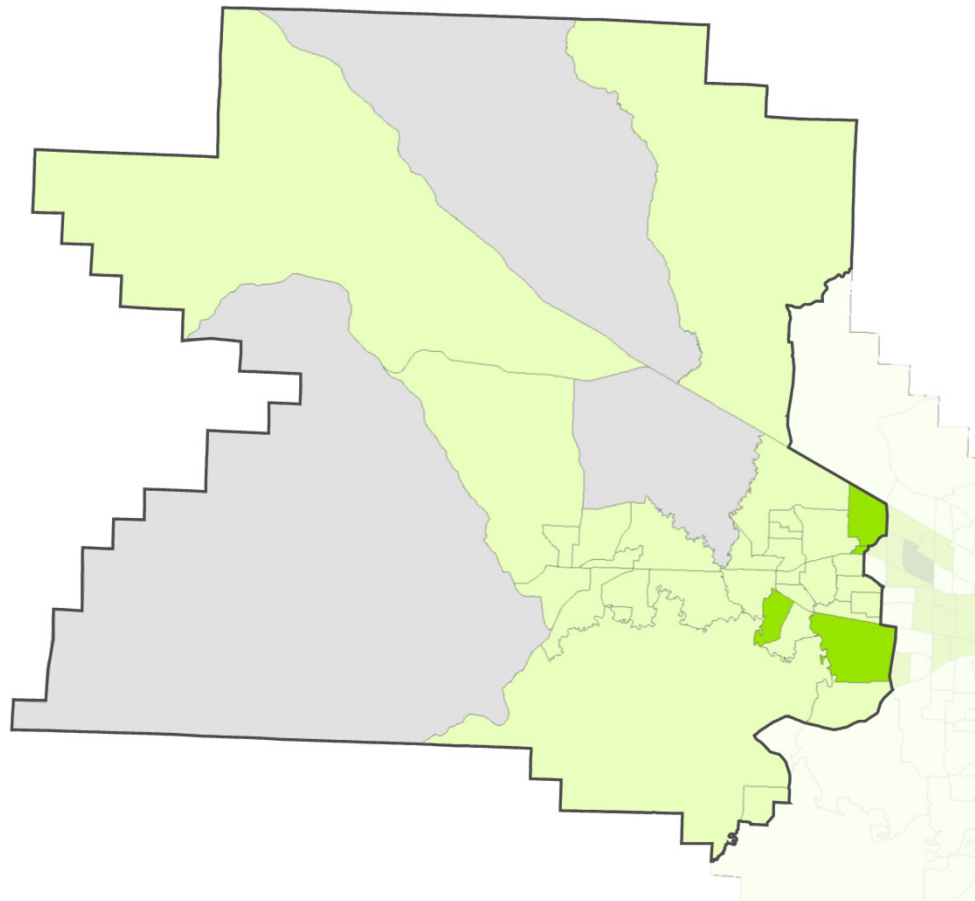
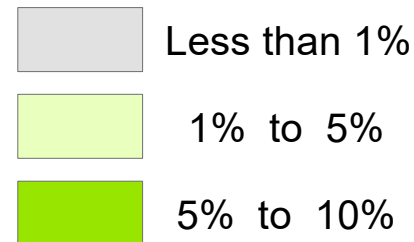


→ Racial and Ethnic Diversity, District 4

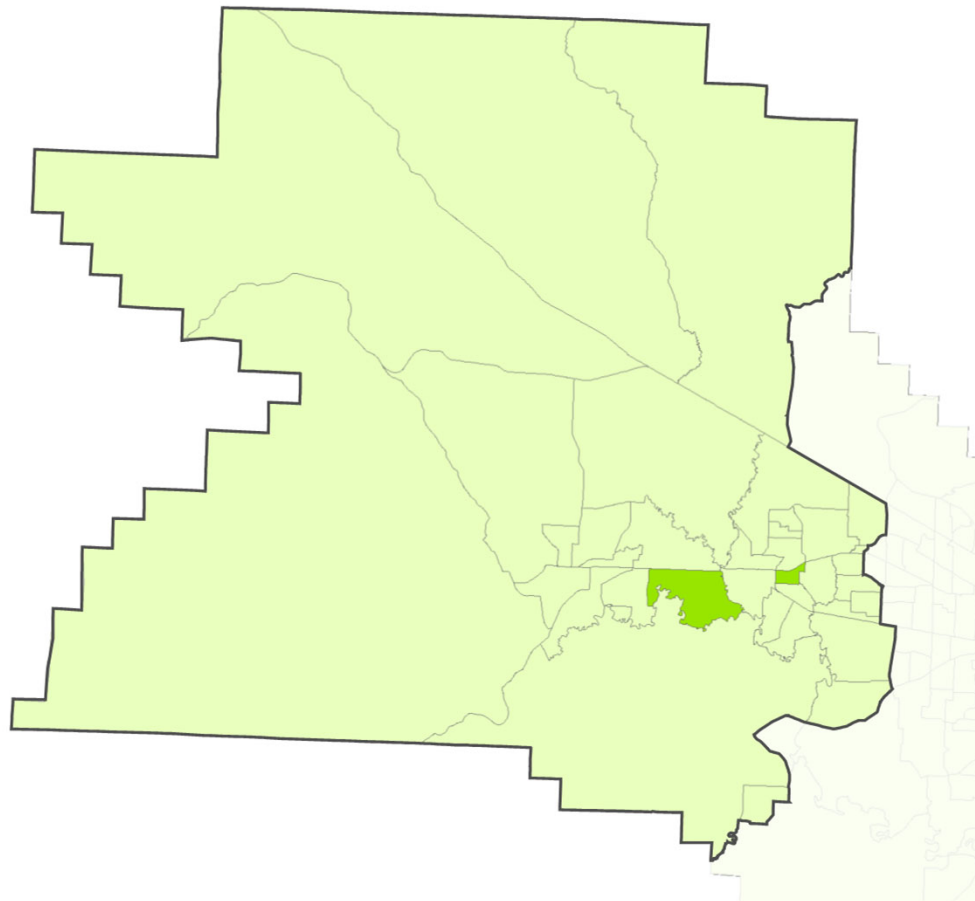


Percent Black - 2020

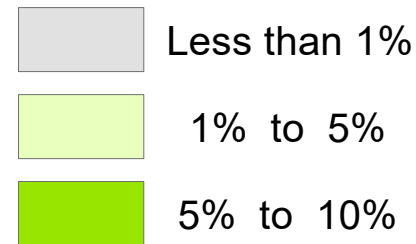


This map shows the percentage of the population that reported Black, Alone or In Combination, for their racial category, by Census Tracts.

→ Racial and Ethnic Diversity, District 4

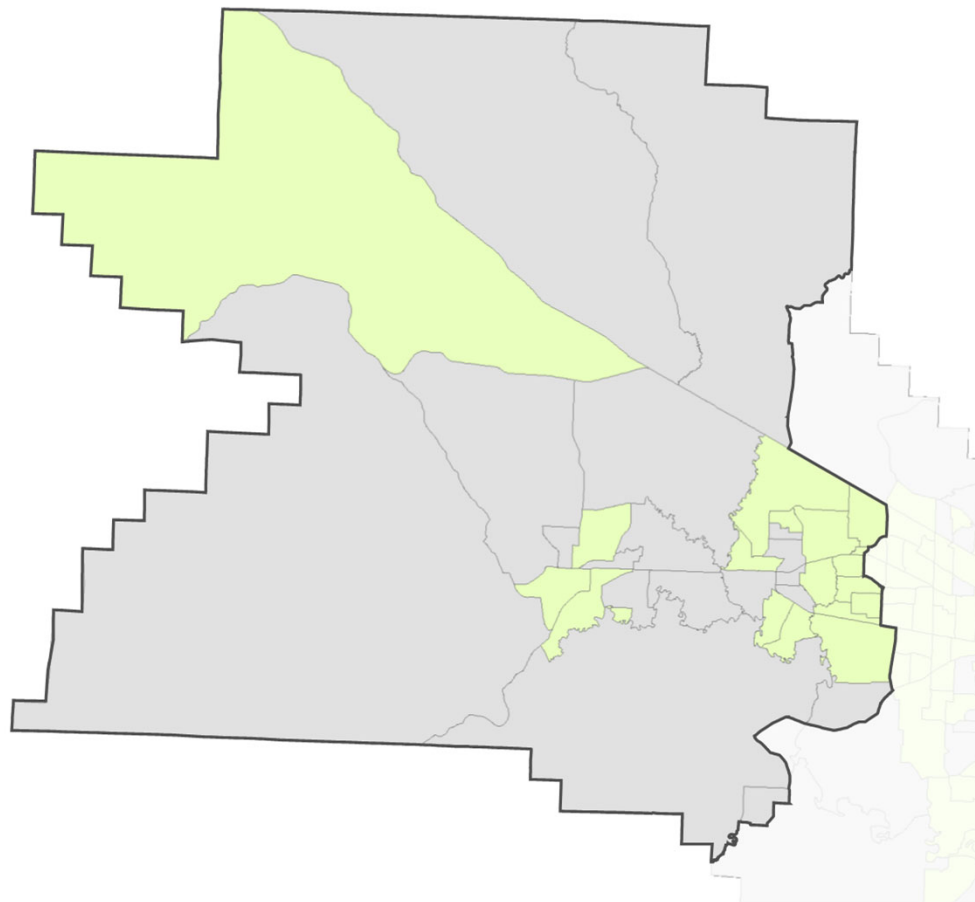


Percent Indigenous - 2020

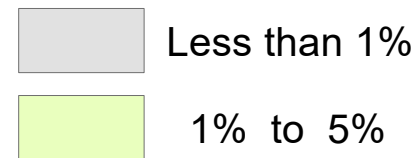


This map shows the percentage of the population that reported American Indian or Alaskan Native, Alone or In Combination, for their racial category, by Census Tracts.

→ Racial and Ethnic Diversity, District 4

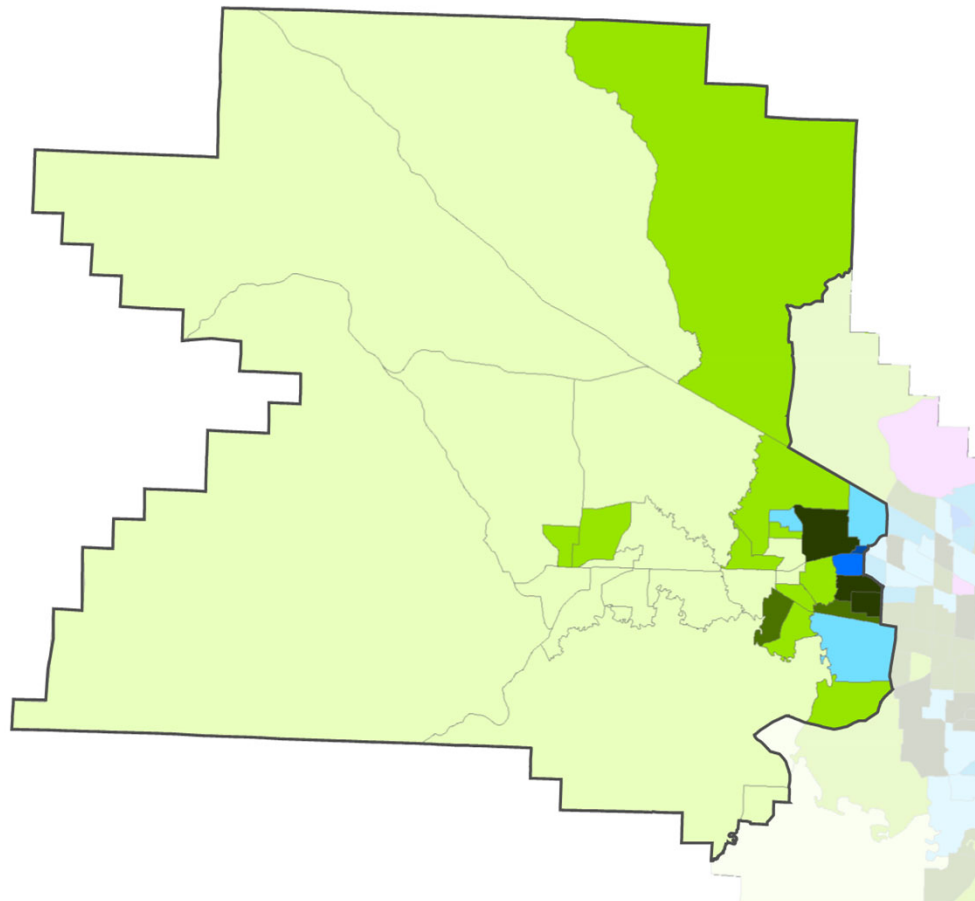


Percent Pacific Islander - 2020

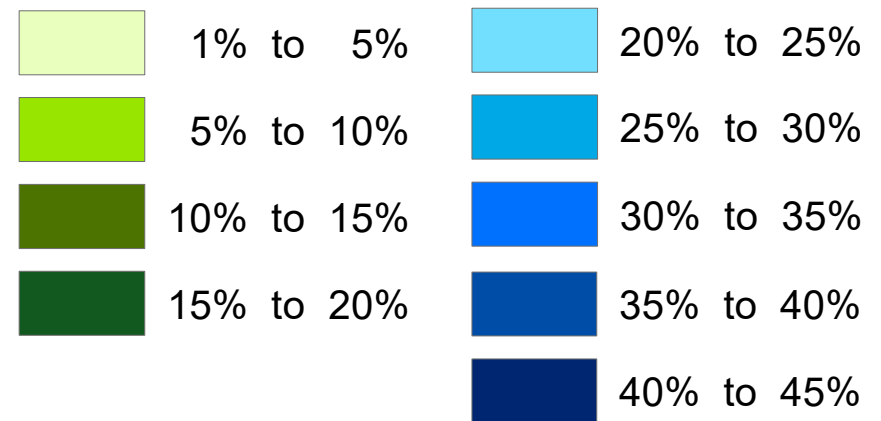


This map shows the percentage of the population that reported Native Hawaiian or Other Pacific Islander, Alone or In Combination, for their racial category, by Census Tracts.

→ Racial and Ethnic Diversity, District 4

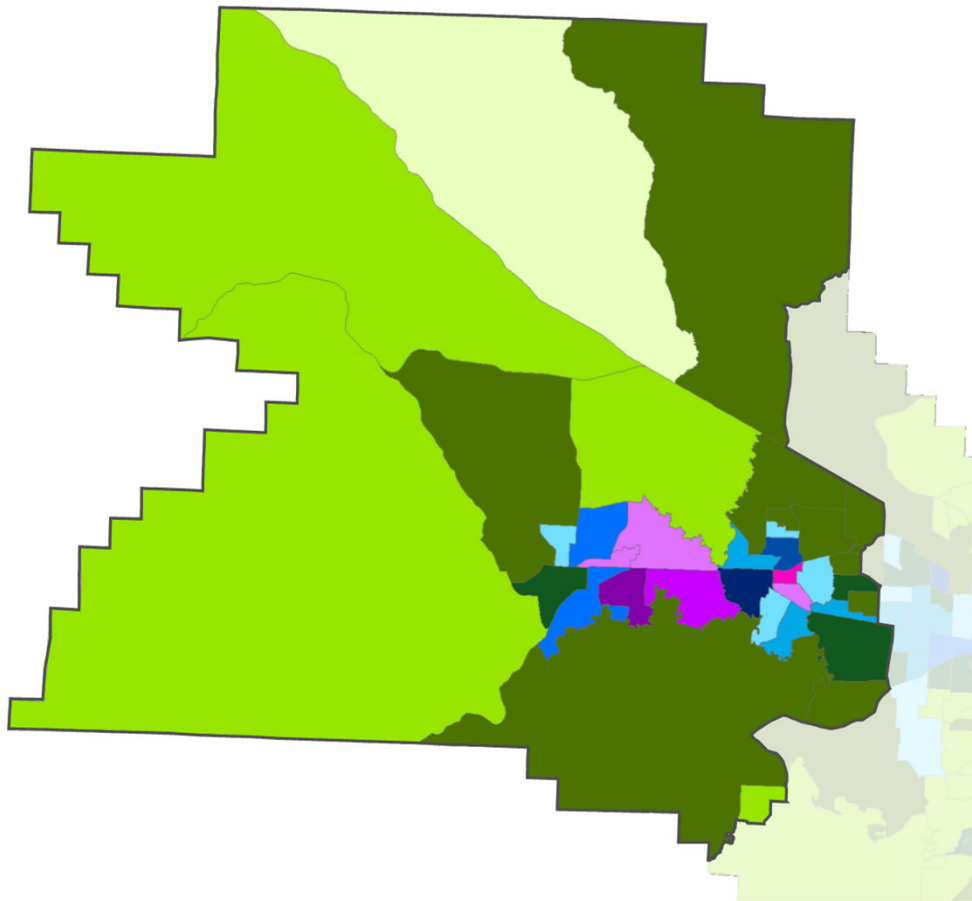


Percent Asian- 2020

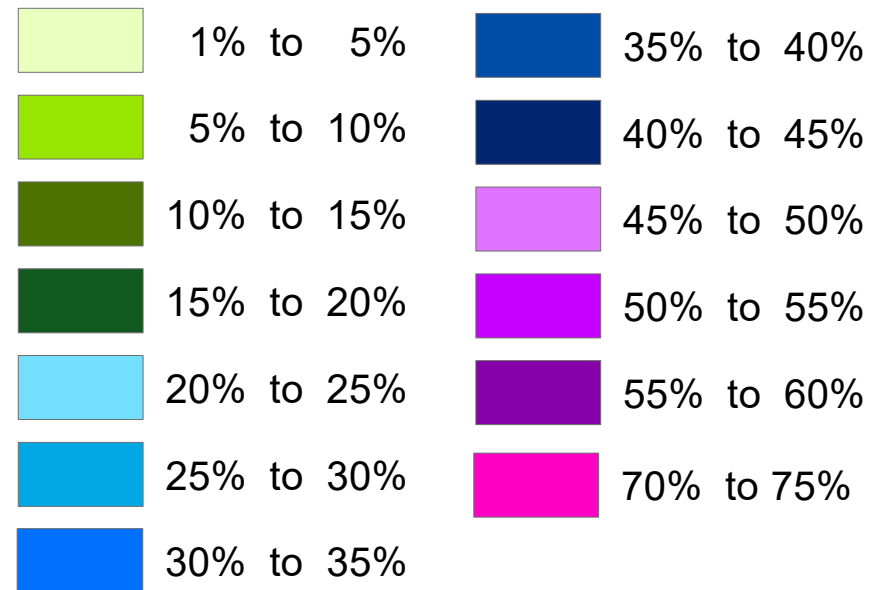


This map shows the percentage of the population that reported Asian, Alone or In Combination, for their racial category, by Census Tracts.

→ Racial and Ethnic Diversity, District 4



Percent Hispanic - 2020



This map shows the percentage of the population that reported Hispanic or Latino/a/x, of any race, for their race and ethnicity category