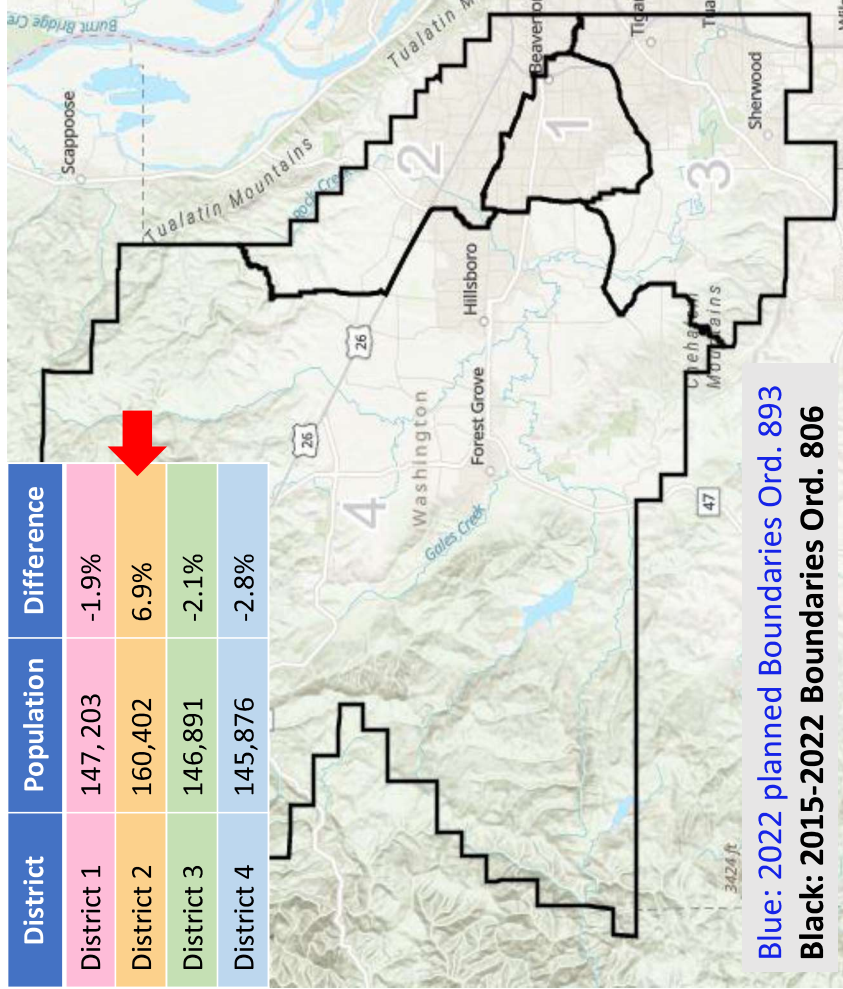


# Commissioner District Boundaries

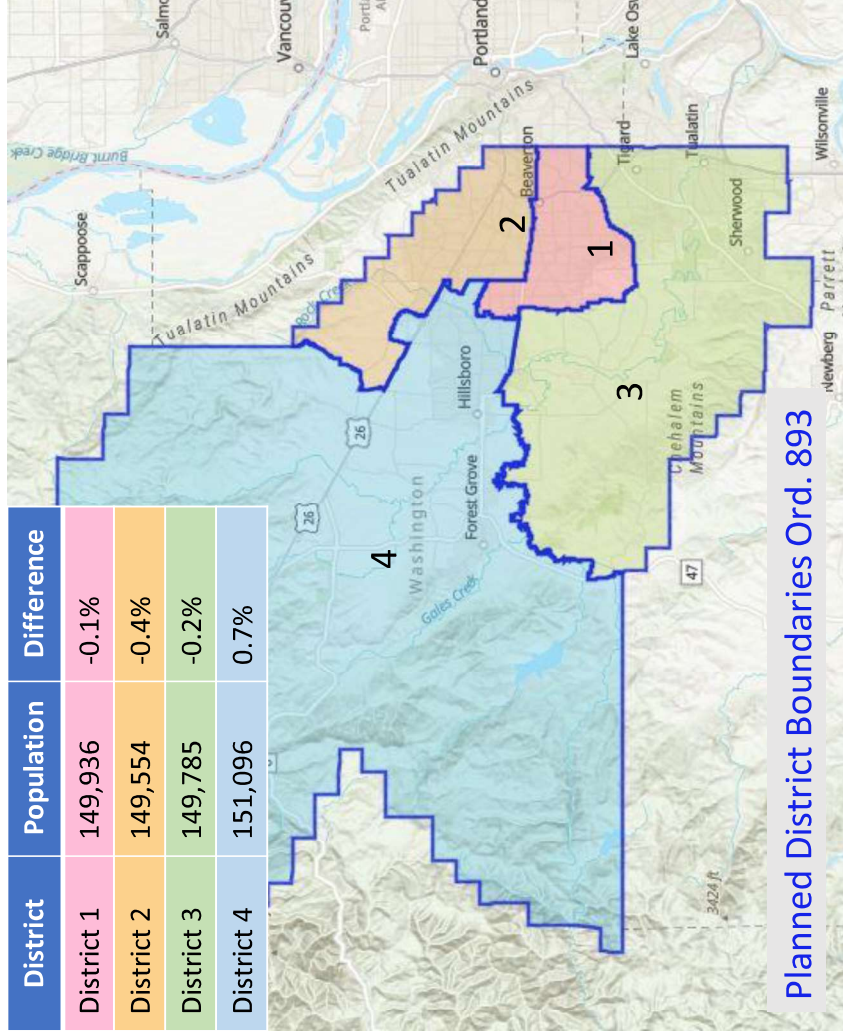


| District   | Population | Difference |
|------------|------------|------------|
| District 1 | 147,203    | -1.9%      |
| District 2 | 160,402    | 6.9%       |
| District 3 | 146,891    | -2.1%      |
| District 4 | 145,876    | -2.8%      |



**Blue: 2022 planned Boundaries Ord. 893**  
**Black: 2015-2022 Boundaries Ord. 806**

| District   | Population | Difference |
|------------|------------|------------|
| District 1 | 149,936    | -0.1%      |
| District 2 | 149,554    | -0.4%      |
| District 3 | 149,785    | -0.2%      |
| District 4 | 151,096    | 0.7%       |



**Planned District Boundaries Ord. 893**