

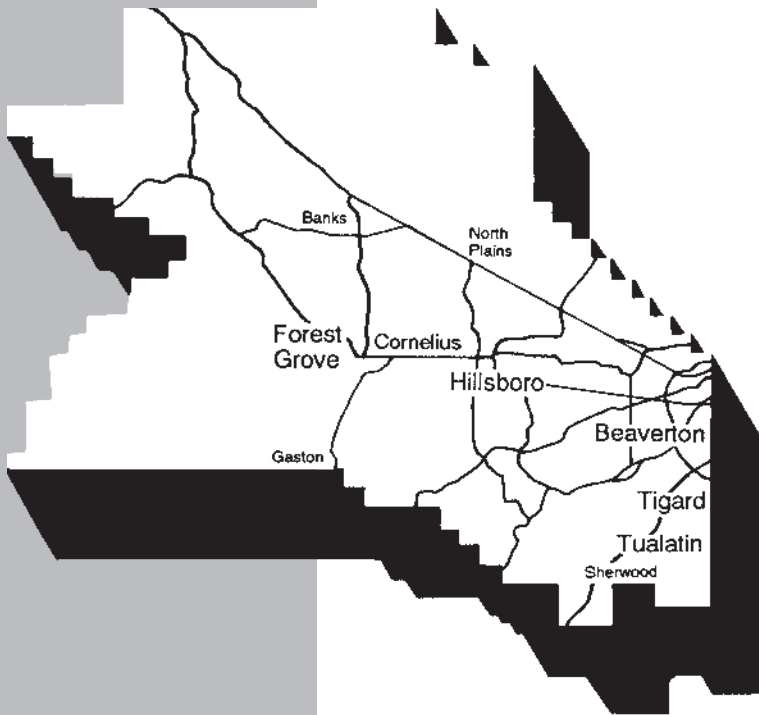


Elections Division  
3700 SW Murray Blvd  
Beaverton, OR 97005

# Washington County

# A

# voters' pamphlet



**VOTE-BY-MAIL  
ELECTION  
MAY 20, 2003**

**To be counted,  
voted ballots must  
be in our office  
by 8:00 pm on  
MAY 20, 2003**

## **Washington County Board of County Commissioners**

Tom Brian, Chair  
Dick Schouten, District 1  
John Leeper, District 2  
Roy Rogers, District 3  
Andy Duyck, District 4

---

Dear Voter:

This pamphlet contains information for several districts and there may be candidates/measures included that are not on your ballot. If you have any questions, call 503-846-5800.

---

**Attention:**

Washington County Elections prints information as submitted. We do not correct spelling, punctuation, grammar, syntax, errors or inaccurate information.

---

# PORTLAND COMMUNITY COLLEGE

**Director  
Zone 7**



**KAREN  
MCKINNEY**

**OCCUPATION:** Elected Official, community leader.  
**OCCUPATIONAL BACKGROUND:** Teacher, Beaverton and Indiana schools; Director Special Projects and Health Education, Washington County, Department of Public Health.  
**EDUCATIONAL BACKGROUND:** Ball State University, Muncie, Indiana, B.S.; Masters work Portland State University.  
**PRIOR GOVERNMENTAL EXPERIENCE:** Currently Portland Community College Board; (Past Chair 1990-1996-2001). Hillsboro City Councilor; Former Appointee White House and United States Secretary of Education (FIPSE), Education Commission; American Community College Association, National Trust Fund Board; Form Oregon Community College Association Board, Former Chamber Member (Hillsboro/Forest Grove); Chair Hillsboro High Schools and Elementary Boards, Former Business Education Review Board; Governor Appointee State Health Planning Commission, Chair Tuality Community Hospital Review, Member Metropolitan Area Communication Commission (Cable).

**Current Member Portland Community College Board**

**General Facts**

- Largest Post secondary education institution in the state
- Enrolls some 103,00 PT/FT students
- Provides lower division and technical programs
- Keeps tuition costs affordable
- Provide campuses and centers in various locations

***McKinney: Servicing your interests***

**New Center:** Worked to create a Hillsboro Training Center in the heart of downtown.

**High School Connections:** Supported “dual credit” programs offered at area high schools, leading to professional and technical degrees and certificates.

**Business Partnerships:** Promoted customized training programs that are offered to over 200 businesses.

**Seniors:** Strengthen programs for seniors through Senior Study Institute.

**Chamber:** Recognized the Chamber’s commitment to economic development and has supported training programs for area businesses.

**Community Education:** Supported community education classes in credit and non-credit areas.

**Hispanic Population:** Has strong commitment to strengthening offerings in English as second language classes and seminars for Hispanic businesses through the Chamber and “Digital Bridge Program” through Hillsboro Library.

**School-to-Work:** Participated with business education compact to enhance internship programs and school-to-work opportunities.

**Health Care:** Linked with Tuality and area hospitals to provide training internship in nursing and allied health professionals programs.

***McKinney: Representing Your Interests***

*(This information furnished by Karen McKinney Election Committee)*

# BEAVERTON SCHOOL

**Director  
Zone 3**



**PRISCILLA  
TURNER**

**OCCUPATION:** Housewife.  
**OCCUPATIONAL BACKGROUND:** Teacher Oregon Episcopal School, 1981, 85; First Interstate Bank, 1976-81.  
**EDUCATIONAL BACKGROUND:** Beaverton High School, 1971; Colorado College, BA-Spanish, 1974.  
**PRIOR GOVERNMENTAL EXPERIENCE:** Beaverton School Board 1999-present; LSC-Raleigh Park, 1994-97.

**PRISCILLA TURNER**  
**Conscientious**  
**Committed to Education and Children**  
**Experienced Leader**

**COMMITTED TO PUBLIC EDUCATION**

I am committed to the responsibility our community has to provide quality education for all children. Having served on the Beaverton School Board for the past 4-years, I have attained the experience and knowledge to guide our district through the challenging times ahead.

Our district has a tradition of sound fiscal management, high student achievement, a skilled and committed staff, and supportive parents. It is the cornerstone of our community and a school district we have all been proud to support.

**INVOLVEMENT SPANNING NEARLY TWO DECADES:**

Elected Beaverton School Board  
 Beaverton School District Budget Committee  
 Co-Chair, Citizens for School Support Legislative Action  
 Elected LSC-Raleigh Park  
 Spanish/English Tutor  
 President PTO Raleigh Park/Whitford  
 Executive Board Beaverton High Boosters  
 Whitford Site-Council  
 Classroom Volunteer 18-years

**A VISIONARY ADVOCATE**

As the parent of two school-age sons, I am in the schools weekly. I bring an open-mind to each conversation. Even though BSD faces significant state funding challenges, we must stay focused on individual student needs.

**RE-ELECT PRISCILLA TURNER – BEAVERTON SCHOOL BOARD!**

Mayor Rob Drake, Beaverton  
 Beaverton City Councilors - Forest Soth/Cathy Stanton/Betty Bode  
 State Senators Ryan Deckert/Charlie Ringo  
 State Representatives Mark Hass/Brad Avakian/Jeff Barker  
 Beaverton Planning Commission, Dan Maks  
 Beaverton Business Owner, Don Walton  
 Beaverton School Board, Chuck Meyer (Chair)/Karen Cunningham

**PARENTS:**

Doug Stamm, Janet Hogue, Carol Robinson, John Seger, Michele McKinnon-Fricke, MaryLou Laybourn, Linda Niman, Luanne Fordney, Chris Coughlin

**A CONSCIENTIOUS, COLLABORATIVE VOICE**

My past 4-years as your school board member, combined with all of my school involvement, have given me confidence in my continuing ability to make a positive difference. I am an advocate for all students and believe they can all succeed. I respectfully ask for your vote.

*(This information furnished by Re-elect Priscilla Turner - Beaverton School Board)*

# BEAVERTON SCHOOL

**Director  
Zone 6**

**Director  
Zone 6**

NO  
PHOTO  
SUBMITTED

MIKE  
LEOPOLD



DESMOND  
MURRAY

**OCCUPATION:** Sales Representative.  
**OCCUPATIONAL BACKGROUND:** Sales.  
**EDUCATIONAL BACKGROUND:** Bachelor of Arts Degree, Communication, University of Washington, 1984.  
**PRIOR GOVERNMENTAL EXPERIENCE:** Current Beaverton School Board Member; Hiteon Elementary Local School Committee; District Committees: BSAFE Tiger Team, Year-Round School.

My association with the Beaverton School District began in 1968 as a first-grader at Raleigh Hills Elementary and will continue until 2015 when my daughter graduates from Southridge High.

Four years on the Board has allowed me the opportunity to learn, grow and contribute to our children's future by working with other committed Board Members leading our district through its greatest challenges. Recently your Board completed its most important job, hiring a superintendent. If elected to the school board for a second term, I will continue the creative synergy developed with our new superintendent, Jerry Cologna.

It is important to recognize the valuable contributions teachers make to the more than 35,000 children in the Beaverton School District. For four years I have enjoyed the support of our teachers and continue to value and seek their professional input.

I have the support of many parents and community members because I listen to and represent those who know what's best for their children, the parents.

Our children's education is over dependent on the State General fund. Legislators, lobbyists, and politicians who don't even live in our district shouldn't dictate our budget. I have worked with my Board colleagues to craft a local option.

As a board member, it is my duty to represent all stakeholders in our district. Together, we will lead with a new vision, wisdom, forthrightness, and intense desire to help every child succeed.

Join me in taking control of our children's education.

Vote YES on this election's Local Option.

Re-Elect Mike Leopold, Beaverton School Board Zone 6.

Experience, Teamwork, Accountability

Endorsements

- State Senator Ryan Deckert
- State Senator Charlie Ringo
- State Representative Mark Haas
- Mayor Rob Drake
- Fred Ruby Beaverton City Councilor
- Janet Hogue
- Michelle Fricke
- Chris Coughlin
- Dan Maks

*(This information furnished by Mike Leopold)*

**OCCUPATION:** Software Sales past 10 years have resided in the Pacific NW after completing service in the United States Navy as an electronic technician serving during Desert Storm/Shield.  
**OCCUPATIONAL BACKGROUND:** 10+ yrs. Enterprise Software Sales industry serving both Inside/Outside sales roles.  
**EDUCATIONAL BACKGROUND:** Walton H.S., Bronx, N.Y. U.S. Navy, Silverdale, WA. BSEE/BA Business Marketing University of Phoenix, Tigard, OR completing MBA Business Marketing.  
**PRIOR GOVERNMENTAL EXPERIENCE:** Tualatin, OR. Urban Renewal Advisory Committee

**Personal Data:** Married June 2002 Children Sara 15; Adaora 13; Chinelo 9

**Background:** Originally from Bronx, N.Y I joined the United States Navy directly after graduation from high school. I remained in the military for 6 years completing the BSEE and BA; until my discharge in 1995. Staying in the Pacific Northwest residing in Washington state working for the software giant Microsoft Corporation, and few other industries. Migrating to Portland in March 2000 following an opportunity with WebTrends Corporation selling Enterprise Software Solutions. I then decided to get involved with government service in 2001 with the City of Tualatin Urban Renewal Advisory Committee. I then decided to get involved with government service in 2001 with the City of Tualatin Urban Renewal Advisory Committee. I met my future wife, married June 8 2002 and currently have three wonderful stepchildren

*(This information furnished by Desmond Murray)*

# BEAVERTON SCHOOL

**Director  
Zone 7**

**Director  
Zone 7**



**DAVID  
F.  
HILTNER**

**OCCUPATION:** Electronic Engineer.  
**OCCUPATIONAL BACKGROUND:** Electronic Engineer, 1973 to 1986 Tektronix; 1986 to 1993, Out of state; 1993 to 2000, Planar Systems; 2000 to current, Tektronix.  
**EDUCATIONAL BACKGROUND:** Elementary: Portland Public Schools; High School: Benson Polytechnic School; University: BSEE University of Portland.  
**PRIOR GOVERNMENTAL EXPERIENCE:** Local School Committee, Barnes; Local School Committee, Meadow Park.

There are two things I am looking for from this election. One is the opportunity to learn more about how the district works.  
 The second is to help fix some of the problems that can be identified. As part of this, we need to determine some means of making district operations more transparent.  
 For more information about me, and a way to ask questions, please visit my website:  
[www.4hiltner.org](http://www.4hiltner.org)

*(This information furnished by David F. Hiltner)*



**CHUCK  
MEYER**

**OCCUPATION:** Bonneville Power, Portland OR: 1/97 – Present: Vice President, Transmission Marketing and Sales.  
**OCCUPATIONAL BACKGROUND:** Over 26 Years at Bonneville Power, Portland OR; 6/96-12/96: Manager, Business Strategy; 5/94-5/96: Manager, Industrial Customers; 11/89-5/94: Director of Resource Planning; 1981-1989: Director of Finance and Budget; 1976-1981: Economist.  
**EDUCATIONAL BACKGROUND:** Bachelors Degree in Business Administration, Cum Laude, Kent State University, 1973; Masters Degree In Economics, Kent State University, 1974.  
**PRIOR GOVERNMENTAL EXPERIENCE:** 1994-Present: Beaverton School Board Member; 1997, 2000, 2002, and 2003: President, Beaverton School Board; 1997-1999: Metro's Policy Advisory Committee.

**In Meyer's nine years on the school board, Beaverton students excelled academically:**

**SAT Scores Exceed State and National Averages**  
**Statewide Assessment Scores Exceeded State Averages**  
**Drop out rate Cut In Half**

*Chuck Meyer IS on the job for our kids!*  
 HE ASKS PROBING QUESTIONS...KEEPS AN OPEN MIND AND A POSITIVE OUTLOOK AND IS EFFECTIVE WORKING WITH ALL GROUPS.

CHUCK MEYER IS DEDICATED TO:

- Maintaining quality program offerings, sports, and class size;
- Ensuring all students are safe and academically successful;
- Fostering collaboration among all groups in our community including law enforcement and business;
- Operating schools efficiently and effectively;
- Improving accountability of taxpayer dollars.

"My nine years on the school board, in addition to two daughters that have recently graduated from Aloha High School, have allowed me to explore the complex concerns of our District. With your vote, I'll continue to work on finding solutions."

WE WANT TO KEEP CHUCK MEYER ON THE SCHOOL BOARD:  
 SENATOR RYAN DECKERT  
 SENATOR CHARLIE RINGO  
 FORMER SENATOR TOM HARTUNG  
 REPRESENTATIVE MARK HASS  
 MAYOR ROB DRAKE, City of Beaverton  
 ROY DANCER, Concerned Citizen  
 DAN MAKES, Beaverton Planning Commission  
 DON WALTON, Owner/Partner Modernfold Northwest  
 KATHY LESLIE, KSA-Plus Communications

*(This information furnished by Chuck Meyer)*

# BEAVERTON SCHOOL

Hiteon Elementary LSC



TOM  
LOVE

**OCCUPATION:** Compliance Specialist 2 (Inspector), Oregon Department of Agriculture.

**OCCUPATIONAL BACKGROUND:** Twelve years in measurement standards enforcement, three years as a paralegal.

**EDUCATIONAL BACKGROUND:** BA in Economics, UCLA. One year of law school, Golden Gate University, San Francisco.

**PRIOR GOVERNMENTAL EXPERIENCE:** Member, South Beaverton Neighborhood Association Committee (NAC).

**SUPPORT TOM LOVE FOR HITEON ELEMENTARY  
LOCAL SCHOOL COMMITTEE**

#### HIGH ACADEMIC STANDARDS

High Academic Standards make for the skills necessary for lifelong learning and application. When we create a character building environment, rich with service opportunities, industry and application are not just possible but probable. Let's promote accountability through assessment testing and concentrate on providing the kind of educational system our children can not only inherit but make use of.

#### FISCAL ACCOUNTABILITY

Taxpayers rightfully expect and are entitled to know that their money is well spent at the classroom level. Tax dollars should have accountability when delivering the "Educational Product" to our children.

#### COMMUNITY INVOLVEMENT

The primary responsibility in the education of children lies with parents. Schools and teachers are secondary and necessary contributors who work with parents to provide a good educational environment. Learning begins at home, it doesn't end there. We must all work together, taking active roles in the education of our children.

#### LOCAL SCHOOL COMMITTEES ARE KEY

A school is the heart of a neighborhood, used by the whole community for a variety of activities. As a Local School Committee member, I will work to manage our facility to benefit all while using our forum to advance the goals I outline above. Thank you.

**VOTE TOM LOVE**  
[tlove@gbronline.com](mailto:tlove@gbronline.com)

*(This information furnished by Tom Love)*

**WATCH  
WASHINGTON  
COUNTY  
ELECTION  
RESULTS  
ON  
MAY 20, 2003**

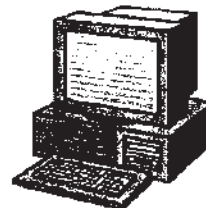
**Starting at 8:00 P.M.**

**Tualatin Valley Television  
On Comcast Cable Channel 28**



**OR**

**WEB PAGE**



**[www.co.washington.or.us](http://www.co.washington.or.us)**



# BEAVERTON SCHOOL

## Measure No. 34-67

### BALLOT TITLE

#### LOCAL OPTION TAX TO RESTORE SOME STAFF AND STUDENT PROGRAMS

**QUESTION:** Shall District levy up to \$1.50 per \$1000 of assessed value annually for three years beginning 2003-2004 for operations? This Measure may cause property taxes to increase more than three percent.

**SUMMARY:** This Measure may be passed only at an election with at least a 50 percent voter turnout.

The downturn in the economy has caused the Legislature to reduce basic operating funds for all Oregon schools. The Beaverton School District is estimating a funding shortfall of \$30-35 million for 2003-04. Local option taxes would be used to restore some staff positions and student education programs. Without the additional revenue, the District will have to reduce staff and programs. This Measure authorizes Beaverton School District 48J, in Washington and Multnomah Counties, Oregon to levy a property tax in the amount of up to \$1.50 per \$1000 of assessed value each year for three years.

An estimate of the total amount to be raised each fiscal year is:

2003-2004	\$17,890,000
2004-2005	\$19,860,000
2005-2006	\$21,850,000

The total amount of money to be raised by this Measure is estimated to be \$59,600,000.

The estimated tax cost for this measure is an ESTIMATE ONLY based on the best information available from the county assessors of Washington County and Multnomah County at the time of the estimate.

### EXPLANATORY STATEMENT

The Beaverton School District Board is seeking approval of a 3-year local option levy to restore some staff positions and student education programs. If approved, the levy would raise approximately \$17 million per year for 3 years, for an estimated total of \$59.6 million.

The District estimates a funding shortfall of \$30-35 million for the 2003-2004 school year. The Budget Committee has identified staff and program reductions including: reading teachers, PE teachers, librarians, music teachers, instructional aides and administrators, as well as athletics and activities and other student education programs.

The downturn in Oregon's economy has led to this shortfall. Before 1990, local property taxes were the major source of school funding. Now 60 percent of school budgets come from the state's general fund. Seventy-four percent of Oregon's general fund comes from personal income taxes. During an economic downturn, income taxes fluctuate more quickly and dramatically than other taxes. This leaves schools particularly vulnerable to funding losses.

The Beaverton School District receives an average of \$4,617 per weighted average student, \$62 below the state average. This translates to a nearly \$2.5 million difference in funding.

#### Proceeds to Restore Portion of Anticipated Losses

If this measure passes, revenue will help the district:

- Restore a portion of the anticipated losses
- Restore some teaching positions

- Restore some student education programs
- Maintain quality education

#### Beaverton Students Perform Well

Beaverton students outperform their Oregon peers in statewide tests and SAT scores. The District has many award winning programs and honored teachers. Several Beaverton schools have been rated exceptional by the State of Oregon.

#### Estimate Your Costs

It would cost the property taxpayer up to an estimated \$1.50 per \$1,000 of assessed value per year over three years. Property taxes will vary from property to property. To estimate your tax, please go to [www.beavton.k12.or.us](http://www.beavton.k12.or.us) and click on local option.

#### County to Mail Ballots on May 2, 2003

This measure will appear on the May 20, 2003 ballot. It is a vote-by-mail election, and ballots will be mailed to all registered voters on May 2, 2003. The double majority requirement will apply in this election, meaning there must be at least a 50 percent voter turnout and a majority of those ballots have to be in favor of the levy.

To be eligible to vote you must be registered by April 29, 2003. Completed ballots must reach the county election office by 8 p.m. May 20, 2003. Ballots postmarked May 20 will not count.

Submitted by:  
James R. Carnes  
Interim Superintendent

## BEAVERTON SCHOOL

**Measure No. 34-67****ARGUMENT FOR****Economic Growth Requires High Quality Schools**

As successful Oregon businesses, we understand how important an excellent school district is to the economic vitality of a community.

We depend on strong communities with quality education systems to ensure a base of well-educated and competent employees. **And strong schools allow us to recruit and hire the talent we need for our economic growth.**

The Beaverton School District is:

- *One of the highest performing and best-managed districts in Oregon*
- *Posts SAT scores higher than the state and national averages*
- *Exceeds Oregon's averages in state reading, literature and math tests*

During the past decade of difficult budget reductions, BSD has:

- *Reduced central administrative support by 40%*
- *Implemented energy cost-saving measures*
- *Capped medical insurance for employees*

All of these savings have been directed to the classroom.

Next September, the Beaverton School District is facing a funding deficit from the state of Oregon of \$30-\$35 million.

The impact of this shortfall will be felt, first in our schools, and then throughout our community and state. Beaverton schools could lose up to 250 teachers and a significant number of school days.

**The continued success of the Beaverton School District is an important factor in the future success of companies located here. And strong schools are necessary in order to attract new businesses to the area.**

**A high quality public school system promotes job growth and a continuing base of tax revenues generated by successful businesses.**

**We urge you to vote YES for Measure 34-67,  
Beaverton's Local Option Levy**

**John Emrick**  
Norm Thompson

**Sho Dozono**  
Azumano Travel

**Jack L. Orchard**  
Ball Janik LLP

Submitted by:  
Citizens for School Support

The printing of this argument does not constitute an endorsement by Washington County, nor does the county warrant the accuracy or truth of any statements made in the argument.

**ARGUMENT FOR****SENIOR CITIZENS URGE A YES VOTE FOR  
BEAVERTON'S CHILDREN**

As long time Beaverton residents we have always valued our public schools.

**Beaverton schools have been extremely well-run and managed during a decade of difficult budget cuts. They continue to provide our kids with a top-quality education while using our resources wisely.**

But next year, in spite of this careful fiscal management, our schools face a **\$30-\$35 million dollar** educational funding shortfall from the state.

**By September, Beaverton schools will face potential reductions of 250 critical teaching positions, important programs and the loss of school days that could include:**

- *Athletics and Activities district-wide*
- *Elementary P.E. and music teachers*
- *Reading teachers*
- *Elementary and Middle School Librarians*
- *Administrators*
- *Instructional Aides*

**We can't let this happen.**

- *Students deserve a full school year*
- *Students deserve a quality education to prepare for work and college*
- *Students must be engaged in school in manageable class sizes*
- *Students must be safe after-school in athletics and extra-curricular activities*

We must also maintain strong schools to maintain a strong economy.

It is up to us, as Beaverton residents, to help our schools.

We cannot wait for solutions from our state.

**This levy will generate \$17 million to fill the gap left by our legislature. The portion of staff and programs restored will make a real difference for Beaverton's children - keeping class sizes down and programs available.**

Children are the future. Our schools have always been the cornerstone of our community and the reason many of us have lived and worked here.

We feel that supporting education for all of Beaverton's children continues to be our most enduring legacy.

**Please join us and other senior citizens by voting YES for Measure 34-67.**

Elsie Stuhr  
Homer Speer  
Sally Bunnell  
George Russell  
Ken Weidkamp

Submitted by:  
Citizens for School Support

The printing of this argument does not constitute an endorsement by Washington County, nor does the county warrant the accuracy or truth of any statements made in the argument.

# BEAVERTON SCHOOL

## Measure No. 34-67

### ARGUMENT FOR

#### LOCAL PARENTS IN SUPPORT OF LOCAL EDUCATION

We are involved parents of students in all grades throughout the Beaverton School District, and our children are receiving an exemplary education. **We support the passage of the BSD Local Option levy to ensure that they continue to do so.**

Despite cuts in state funding during the past decade, the Beaverton School District has maintained a high quality educational program. The district has made tough budget decisions, pinching pennies and cutting administrators, programs and services to focus dollars in the classroom.

Our students continue to succeed because of the concerted efforts of parents and school staff.

We volunteer in classrooms, Parent Teacher Organizations, Local School Committees, and Site Councils. We tutor, fundraise and lobby in the state legislature. We witness, first-hand, the effectiveness of the Beaverton School District.

Oregon's current fiscal situation is likely to result in an estimated **\$30-\$35 million** shortfall in the BSD's fall budget

**The budget committee has identified reductions of 250 teachers, programs and school days, including:**

- **Athletics and Activities district-wide**
- **Elementary P.E. and music teachers**
- **Reading teachers**
- **Elementary and Middle School Librarians**
- **Administrators**
- **Instructional Aides**

Volunteer hours cannot replace these losses.

But, we **can** do something to improve the outlook for next year. Passage of Measure 34-67 would generate \$17 million. This will enable the district to keep teachers – and teachers mean smaller class sizes and more programs within our schools.

#### **Please Vote Yes on Measure 34-67 to Maintain our Excellent Schools**

Doug Stamm	Julie Aldridge	Janet Hogue
Jane Reser	Glenda AhNee	Suzanne Bonamici
MaryLou Laybourn	Shauna Cannady	Carrie Matsuo
Lesley Curl	Beth Asmann	Virginia Breen
Shannon Schaller	Lori Stole	Don Ganer
Kim Lewis	Jeanne McConnell	Jim Athay
Nancy K. Winston	Samuel Michael Sanchez	Joan Ambrose
Daniel Zenka	Terri Rathbone	Chris Coughlin
Jean Butcher	Karen K. Steeves	Michele McKinnon-Fricke
Ronald A. Parham	Pam McLean	Carol Robinson
Catherine M. Bome	Dawn H. Bonder	

Submitted by:  
Dawn H. Bonder

The printing of this argument does not constitute an endorsement by Washington County, nor does the county warrant the accuracy or truth of any statements made in the argument.

### ARGUMENT FOR

#### WORKING FOR STUDENT SUCCESS

#### **Teachers Support Beaverton's Local Option Levy**

On behalf of all Beaverton educators, we strongly urge you to **Vote YES for Measure 34-67.**

The money generated by the levy can help **preserve quality programs and minimize the potential reduction in teaching positions and school days** that face our district next fall.

By any measure, the Beaverton School District has long been considered among the finest in the nation. **The Local Option** levy will help Beaverton **maintain its exceptional school system.**

Beaverton educators will continue to provide the **best possible instruction for all children.**

#### **PLEASE VOTE YES FOR BEAVERTON'S CHILDREN**

Thank you.

Jim Doriss  
Trisha Parks  
Bruce Adams  
Karen Hoffman  
Johanna R. Vaandering  
Jenny Takeda  
R. Keith Ayres  
Yvonne Rua de King  
Shannon Sari  
Laurie Manghelli  
Geoffrey Hunnicutt

Submitted by:  
Trisha Parks

The printing of this argument does not constitute an endorsement by Washington County, nor does the county warrant the accuracy or truth of any statements made in the argument.



## BEAVERTON SCHOOL

**Measure No. 34-67****ARGUMENT FOR****BEAVERTON BUSINESSES URGE A YES VOTE****For Our Schools****For Our Community****For Our Economy**

**The Beaverton Area Chamber of Commerce** urges you to vote **YES** on **Measure 34-67** for our schools, for our community and for our economy.

The Chamber of Commerce has 635 members and has always supported **excellent schools as an essential element of a positive business and economic environment.**

The Chamber believes that the **Local Option Levy** is necessary to:

- **Maintain the high quality of education provided by the Beaverton School District**
- **Retain teachers and other staff members**

Beaverton's administrative costs rank the lowest among the ten largest school districts in Oregon.

**Our local economy depends on keeping our schools strong.** We ask you to continue your **support** for our **strong schools** and our **vital and prosperous economy.**

**Lorraine Clarno****President****Beaverton Chamber of Commerce**

Submitted by:

Board of Directors

Beaverton Chamber of Commerce

The printing of this argument does not constitute an endorsement by Washington County, nor does the county warrant the accuracy or truth of any statements made in the argument.

**ARGUMENT FOR****PROTECT OUR COMMUNITY INVESTMENT WITH  
MEASURE 34-67**

Strong schools have paid strong dividends in Beaverton. Many residents live and work here because of our exceptional schools.

Beaverton schools have prepared numerous generations for successful careers and college educations. Our schools continually outperform districts across Oregon and the nation.

- **Beaverton exceeds the state averages at all grade levels on the state reading and literature test.**
- **Beaverton math assessment scores have improved each year at all grades.**
- **Beaverton's average SAT scores are higher than state and national averages.**

Beaverton is fiscally well-managed. Even as state revenue has decreased, Beaverton has concentrated dollars in the classroom.

- **Beaverton's administrative costs are the lowest among the ten largest Oregon districts. Administrators comprise just 4% of total staff.**
- **Beaverton capped medical insurance for employees to hold down health care costs and retain teachers.**
- **Beaverton is one of two districts in the metro region that has not cut days this spring. It is using carefully saved reserves to maintain this academic year.**

Next fall our schools face a \$30 - \$35 million shortfall from the state. Because state deficits have forced Beaverton to cut \$40 million in the past two years, Beaverton has depleted reserves to hold this year intact. There is nothing to fall back on next year.

**Identified potential losses include: district athletic and activity programs, middle school reading teachers, elementary P.E. and music teachers and school days.**

The health of our schools and community will be compromised if we don't step forward, **NOW**, to prevent the unraveling of our valuable public school system

**We urge you to vote YES for Measure 34-67.**

**It will generate \$17 million next year that can minimize school days lost, restore valuable staff, keeping class sizes manageable, and help maintain important programs.**

And the money will stay here in Beaverton to help our schools.

**Beaverton Mayor Rob Drake****Beaverton City Council****Dennis Doyle****Fred Ruby****Cathy Stanton****Forrest Soth****Betty Bode**

Submitted by:

Rob Drake, Mayor of Beaverton

The printing of this argument does not constitute an endorsement by Washington County, nor does the county warrant the accuracy or truth of any statements made in the argument.

# BEAVERTON SCHOOL

## Measure No. 34-67

### ARGUMENT FOR

#### KEEP OUR COMMUNITY SAFE Support Our Schools

Beaverton Schools are an integral part of our dynamic community.

They have a strong reputation for excellence throughout the country and are one of the key reasons that Beaverton is such a desirable place to live.

They have been carefully managed using reserves to avoid cutting school days this spring when districts all over the metro area have shortened their school years.

However, I am concerned about next fall.

Beaverton schools face a funding shortfall from the state of \$30 - \$35 million.

Our school board is wrestling with this budget shortfall, and has identified the potential loss of:

- **250 teachers**
- **School days**
- **Beaverton's athletics and activities program**
- **Elementary P.E. and music**

As a law enforcement professional, I am concerned about the Safety of Our Children and Community.

When students are actively engaged in school and involved in programs after-school, they are safe and off the streets.

Strong schools attract key businesses that fuel our economy. If our schools falter, our community will falter.

We need to rally to support them by raising money through this Local Option that will stay in Beaverton to help our schools.

Measure 34-67 will provide \$17 million, next year, to offset the funding shortfall from the state.

That money will minimize reductions in teachers, days and programs that will help keep our children safe and prepare them for their futures in college or work.

As your police chief, I urge you to Vote YES for Measure 34-67

For the Health and Safety of Our Children and Community

Chief David Bishop

*City of Beaverton Police Department*

Submitted by:  
Citizens for School Support

The printing of this argument does not constitute an endorsement by Washington County, nor does the county warrant the accuracy or truth of any statements made in the argument.

### ARGUMENT FOR

#### PROTECT OUR SCHOOLS Vote YES on Measure 34-67

The Beaverton School District has an excellent reputation. The community and staff are proud of Beaverton schools. Our students lead the state and nation in their academic scores. Maintaining that reputation requires the work of many different people including students, staff and community members.

Oregon's economic downturn has forced the legislature to reduce funding for all Oregon schools. **Beaverton's anticipated shortfall of \$35 million will hurt classroom education and jeopardize taxpayer investment in schools.**

As voters, you can help reduce the shortfall in Beaverton. Vote **YES** on 34-67. **Put dollars in the classroom for Beaverton students.**

We are members of the Beaverton community and we know you want:

- **All students to be safe**
- **All students to be academically successful**
- **Tax dollars invested in school buildings, protected**
- **Special needs students served as well as other students**
- **Class sizes kept manageable**

We come to work each day to

- **Help ensure each child is safe**
- **Help ensure each child is successful**
- **Maintain and protect school buildings**
- **Help special needs students with one-on-one help**
- **Assist teachers who have very large classes**

We are proud members of **Oregon School Employees Association** and The Beaverton School District. We represent 190 job titles within the Beaverton School District under these categories:

**Transportation  
Custodial Service  
Technology  
Office Support  
Materials Support**

**Food Service  
Maintenance  
Information Support  
School Support**

We urge you to vote **YES on Measure 34-67** to help maintain Beaverton's excellent reputation.

#### **PLEASE REMEMBER TO VOTE**

The double majority requirement will apply in this election, meaning there must be a 50% voter turnout and a majority of those ballots have to be in favor of the levy.

Kristi M. Crooks, President  
*Beaverton OSEA*

Submitted by:  
Elizabeth Leslie  
Oregon School Employees Associations Chapter 48

The printing of this argument does not constitute an endorsement by Washington County, nor does the county warrant the accuracy or truth of any statements made in the argument.

BEAVERTON SCHOOL

Measure No. 34-67

ARGUMENT FOR

BEAVERTON EDUCATION FOUNDATION  
ASKS FOR  
A UNITED COMMUNITY

The Beaverton Education Foundation, founded in 1988, is a nonprofit organization separate from the Beaverton School District. Our board of directors includes corporate executives, community activists, and small business owners who are grandparents, parents and single adults.

We raise money for student opportunities that would not otherwise be possible. Since 1999 we have distributed \$600,000+ to fund after-school and summer programs and classroom projects.

We've made a positive difference to thousands of children through our efforts. But private fundraising cannot replace the \$30-\$35 million funding shortfall from the state facing the district next fall.

The BSD budget committee has identified reductions that include 250 fewer teachers, elimination of sports and activity programs and a shortened school year.

Districts across Oregon have cut days this spring but Beaverton has not. BSD made difficult budget decisions during the past two years and froze spending as Oregon's economy worsened, carefully putting dollars into reserve. But those dollars have been depleted to keep this year intact.

The 3-year Local Option would generate about \$17 million per year to save important programs, teachers and school days. The money raised here will stay here.

The BEF has never taken a stand on a political measure. But extraordinary times call for extraordinary measures. Because no amount of private fundraising can replace this shortfall, we voted unanimously to endorse this measure.

Beaverton has always valued its schools and children. Today's students deserve the same quality education that Beaverton students have always had. We urge you to vote YES.

- Suzanne Bonamici
- David C. Golder (RBC Dain Rauscher)
- Thomas Husted (BEA)
- John Mikenis (Wells Fargo)
- Molly Ramberg (Highland Park)
- Judith A Scholz
- Denise Hunter-Velaski
- Kevin White (North Pacific Management)
- Luanne Fordney (Peak Performance Sales)
- K. Steven Greene (Baugh Construction Co)
- Marta Mellinger (Oregon Children's Theater)
- Harvey Platt (Platt Electric Supply, Inc)
- Josh Rowe (Nike)
- James E. Shaffer
- Robert C. (Bob) Wayt (Verizon Northwest)

Submitted by:  
Marta Mellinger  
Beaverton Education Foundation

The printing of this argument does not constitute an endorsement by Washington County, nor does the county warrant the accuracy or truth of any statements made in the argument.

ARGUMENT FOR

ALL BEAVERTON CITIZENS BENEFIT  
FROM STRONG SCHOOLS

The benefits of a strong school system are probably obvious to parents of school-age children. But the many Beaverton citizens who do not have children may wonder why they should care. As a result of our work to make Beaverton a safe, prosperous and vibrant community, we know that all citizens reap the benefits of an excellent school district.

Companies look very carefully at school district quality when deciding where to locate their businesses. Maintaining the Beaverton School District as one of the premier districts in the state is in the best interest of all residents, for it helps us stay an economically prosperous city.

Keeping students in school contributes to the safety of any city. We practice a community-oriented approach to public safety that has been very successful. But it would be much harder to achieve that success if, because of school district budget cuts, students were more likely to drop out or had fewer outlets for their creative and athletic energy.

When we ask citizens what contributes to a high quality of life in Beaverton, "good schools" is a frequent response. We are proud that our schools produce successful students . . . academically, athletically, creatively . . . who take their place as thoughtful, contributing citizens upon graduation.

We hope you now realize it's in everyone's best interest to keep the Beaverton School District strong. We believe that passage of the local option levy is critical in allowing that to occur. But even if you disagree, we ask that you vote. If fewer than 50% of the registered voters vote, the levy will fail—even if all who do vote are in favor of it. Please read the messages in this voter's pamphlet, then mark your ballot and return it by the due date. Our community will be strengthened because of your action.

Rob Drake  
Mayor  
Evelyn Brzezinski  
City Councilor, 1993-2002

Submitted by:  
Evelyn Brzezinski  
Beaverton City Councilor, 1993-2002

The printing of this argument does not constitute an endorsement by Washington County, nor does the county warrant the accuracy or truth of any statements made in the argument.

# BEAVERTON SCHOOL

## Measure No. 34-67

### ARGUMENT FOR

#### Beaverton School District Students

#### SAVE OUR TEACHERS AND PROGRAMS

As high school students and student representatives on the Beaverton School Board, we've watched our school board focus every possible dollar in our classrooms as the state funding crisis has gotten worse. That is why Beaverton students continue to succeed.

- **SAT test scores in Beaverton are higher than state and national averages**
- **Drop-out rates have fallen from 7.8% in 1998 to 5.5% in 2001**

But next year, Beaverton schools face a \$30-\$35 million shortfall. We could lose up to 250 teachers, our sports and activities programs and many school days.

We have watched districts around us cut days and programs.

- **We are concerned about the kind of education we can receive in high school classes that have 45-50 students in them.**
- **We're worried about the students coming after us who might not have the choices and opportunities we have had.**

Former graduates have gotten great jobs and been recruited by colleges across the country.

- **But if class sizes increase and we lose school days, our ability to get a quality education will be difficult.**
- **The national reputation of our schools will start to slide, affecting our chances to get into good colleges and get good jobs.**

We urge you to vote **YES on Measure 34-67**. This 3-year levy will produce about \$17 million/year to:

- **Reduce the numbers of teachers lost, minimizing class size increases**
- **Restore some key programs**
- **Restore days to the school year**

The money raised will stay in Beaverton and go to our classrooms.

We have been proud to be Beaverton School District students because our schools have helped prepare us for the future.

#### **VOTE YES for MEASURE 34-67**

**Alison Cody (Beaverton High School)**

**Kristin Heintz (Sunset High School)**

**Radawn Abriel (Aloha High School)**

**Josh Ahwenuke (Westview High School)**

**Babak Ghafarzade (Southridge High School)**

**Devon Downeysmith (Arts & Communication Magnet Academy)**

**James Novacek (Merlo Station School of Science and Technology)**

Submitted by:  
Allison Cody

The printing of this argument does not constitute an endorsement by Washington County, nor does the county warrant the accuracy or truth of any statements made in the argument.

### ARGUMENT FOR

#### **Help Us Protect the Future**

As **volunteers** who **serve as your elected Beaverton School Board**, we are proud of the many successes of our students and staff. We strive to ensure success for each student and to carefully manage our resources. **We have worked to provide a cost-effective, quality education for our 35,000 Beaverton students.**

#### **We prepare our students for the world of work and study:**

- **SAT scores of Beaverton students continue to exceed both state and national averages**
- **84% of Beaverton 5th grade students meet or exceed reading standards compared to 79% statewide**
- **70% of Beaverton 8th grade students meet or exceed math standards compared to 56% statewide**
- **84% of Beaverton 10th grade students meet or exceed writing standards compared to 77% statewide**

#### **To date, we have not cut school days. We focus on protecting the classroom and our students' achievements.**

This has been challenging, but we are committed to the future of our school community and the crucial role of education in Beaverton.

#### **Fiscally sound practices we have followed include:**

- **Capping medical insurance costs for employees**
- **Maintaining low administrative costs**
- **Freezing budgets and positions at the first sign of the state's economic downturn**

We face a difficult task in the next few years. **Without this levy, Beaverton Schools could lose up to 250 teaching positions greatly increasing our class sizes.**

**By passing this 3-year Local Option levy we can minimize the loss of teaching positions keeping class sizes manageable and programs intact.** We know how much this community supports and values education.

**Vote Yes for Measure 34-67 to invest in excellence.**

#### **Members of the Beaverton School Board:**

Karen Cunningham	Craig Irwin	Ann Jacks
Mike Leopold	Chuck Meyer	Michael E. Osborne
Priscilla Turner		

Submitted by:  
Karen Cunningham, Craig Irwin, Ann Jacks  
Mike Leopold, Chuck Meyer, Mike Osborne  
Priscilla Turner

The printing of this argument does not constitute an endorsement by Washington County, nor does the county warrant the accuracy or truth of any statements made in the argument.

# BEAVERTON SCHOOL

## Measure No. 34-67

### ARGUMENT FOR

#### LOCAL BUSINESS LEADERS SUPPORT BEAVERTON'S EXCELLENT SCHOOLS

We are Beaverton business leaders who believe that our schools are the foundation of a healthy local economy. They prepare our students for college and the workforce and contribute to a vibrant community.

Our companies, *Platt Electric Supply, Inc.* and *Reser's Fine Foods* have been members of this community for half a century.

Our independent, family-owned companies hire many Beaverton graduates who are motivated and well-prepared for their jobs. Our own families benefited from excellent Beaverton public school educations.

As business owners, we respect the careful fiscal management of the Beaverton School District, one of only two metro districts able to maintain programs and school days this year, in spite of Oregon's budget shortfalls.

Beaverton has made careful decisions to **protect the classroom** during a decade of budget cuts.

District administrators make up just four percent of the total staff and the student/ administrator ratio is well below the state average.

In spite of that, the district faces a fiscal crisis. It has been forced to make \$40 million in budget cuts over the past two years as the state shortfall has grown.

BSD has depleted its carefully saved "rainy day account" to get through this school year intact.

Predicted state revenue shortfalls will leave Beaverton schools with a **deficit of \$30-\$35 million dollars next year and there are no reserves left.**

The 3-year Local Option Levy will generate about \$17 million a year to help minimize the cuts to critical teaching positions, school days and programs.

It is not a long-term solution.

**But it is something we can do NOW to support our schools.**

**PLEASE VOTE YES FOR MEASURE 34-67.**

**BEAVERTON'S CHILDREN AND THE  
ECONOMIC HEALTH AND VITALITY OF OUR COMMUNITY  
DEPEND ON IT.**

Harvey Platt, *Platt Electric Supply, Inc.*  
Marty Reser, *Reser's Fine Foods*

Submitted by:  
Citizens for School Support

The printing of this argument does not constitute an endorsement by Washington County, nor does the county warrant the accuracy or truth of any statements made in the argument.

### ARGUMENT AGAINST

#### MEASURE 34-67 – A TROJAN HORSE

Everyone wants to support good schools. On the surface, Measure 34-67 sounds appealing. But a closer look reveals that it could actually backfire on our kids. After weighing the benefits of Measure 34-67 against the risks, a "NO" vote makes sense.

- **Beaverton Schools Have Plenty of Money Now**

Beaverton schools shouldn't be short of money. With 35,131 students and a general fund of \$219 million, it spends a generous \$6,230.00 per student. Add federal dollars, and that amount skyrockets to \$11,400.00. Our schools are among the best funded and boasting high student performance. The district's average SAT score of 1079 exceeds Oregon's average by 27 points and the national average by 59. Student teacher ratios also look good, ranging from 1:22 in grades K-6 to 1:26 in high school. Does this sound like a school district in distress?

- **Renters and Homeowners Will All Suffer**

If you own a \$150,000 home, Measure 34-67 will cost you \$225.00 per year ON TOP of the \$1,039.00 you already pay – plus the income taxes you pay which go to schools. If you rent an apartment, this tax hits you, too. Your monthly rent may skyrocket because landlords must ultimately pass tax increases down to you. During a recession, when thousands of people are being thrown out of work, can you afford a new tax, one NOT based on your ability to pay?

- **Measure 34-67 Will Backfire**

"Local option" taxes just let legislators off the hook, thinking that reductions in state school support will be made up by local tax hikes. The result will be reduced state support for schools and higher taxes for you. Some lawmakers, worried about statewide equity, have proposed laws requiring school districts to share "local option" dollars with other school districts. If passed, money raised by Measure 34-67 would be taken out of the Beaverton School District.

**VOTE "NO" ON MEASURE 34-67**

Submitted by:  
Mark Vetanen  
Libertarian Party of Washington County

The printing of this argument does not constitute an endorsement by Washington County, nor does the county warrant the accuracy or truth of any statements made in the argument.



# TUALATIN VALLEY WATER

## Commissioner Position 4



RICHARD  
P.  
BURKE

**OCCUPATION:** Political Consultant, 2000 – present.  
**OCCUPATIONAL BACKGROUND:** Computer Network Consultant, 1989-2001.  
**EDUCATIONAL BACKGROUND:** B.S., Social Science, PSU, 1989.  
**PRIOR GOVERNMENTAL EXPERIENCE:** Elected TVWD Commissioner, 1999, Current Board President. Chair, Bull Run Regional Drinking Water Agency, 2002-present. Legislative Aide, Oregon Senate, 2001. Elected Local School Committee, Beaverton School District, 1994, 1997.

### RE-ELECT RICHARD P. BURKE “PROVEN PERFORMANCE”

#### • Securing Bull Run Water

I recently chaired a group of local leaders exploring shared ownership of the Bull Run watershed. Shared ownership would permanently secure Bull Run water for TVWD ratepayers. I am also working with the City of Portland to build a water filtration plant. The plant will keep water clear during winter storms and protect reservoirs against natural disasters and sabotage. While always looking for new sources of safe water, including improved methods of conservation, we must secure and improve Bull Run water.

#### • Giving YOU the Final Say on Willamette River Water

In 1999, I was the only commissioner to oppose building a water treatment plant on the Willamette river. I repeatedly demanded public hearings and mailings to involve the public in that decision. I lost that vote, but was able to pass an ordinance requiring an election before any Willamette water is brought into our system. This means YOU will have the final say if the idea ever comes up again.

#### • Reducing Your Taxes

During my first term, I opposed new taxes and supported budgets taking TVWD off property tax bills by 2005. After that, TVWD will be funded entirely by the sale of water. We've worked hard to keep water affordable while improving water quality, replacing worn out pipes and making our system more secure. If re-elected, I plan to continue these policies.

**It has been an honor and privilege to serve as a TVWD commissioner.** If re-elected, I will keep working to secure clean, safe and affordable water for ourselves and the generations to follow. Thank you.

<http://www.rpb.com/tvwd>  
[rpb.tvwd@rpb.com](mailto:rpb.tvwd@rpb.com)

*(This information furnished by Friends of Richard Burke)*

## Commissioner Position 4



THOMAS  
LONG

**OCCUPATION:** President Systems Marketing, Investor.  
**OCCUPATIONAL BACKGROUND:** Marketing.  
**EDUCATIONAL BACKGROUND:** Portland State University and PCC.  
**PRIOR GOVERNMENTAL EXPERIENCE:** None.

#### Water-related public policy experience:

- \* **Chairman of Citizens for Safe Water** for over 4 years, leading 4 successful elections establishing the citizen's right to vote on Willamette River water in municipal water supplies.
- \* **Host of cable-TV show, "The Water Spot,"** dealing with governmental decisions affecting water supplies and public safety.
- \* **Participated in decisions for Tualatin Valley Water District (TVWD)** for the last 2 years.

**Decisions now could be critical in the establishment of future water resources affecting the health and safety of the region. I will protect citizens rights to safe water now and in the future!**

Tualatin Valley Water District is the second largest supplier of water in Oregon!

**Yet there are unresolved district issues that could effect that future:**

- 1) TVWD's unused 49% ownership in the Willamette River Drinking Water Treatment Plant at Wilsonville. (\$17 million investment.) They are currently loosing \$500,000 per year on that investment.
- 2) Fish deformities found upstream from the Wilsonville plant leading to questions of water quality.
- 3) Setting safe water standards that could be an example for the entire region!

#### Protecting you I will work to:

- \* **Assure the best possible source of water and treatment** for the District and District-owned water supplies in order to meet or exceed all current and anticipated EPA standards.
- \* **Develop ways for the district to prevent private ownership** of the Bull Run and other publicly owned water districts or municipalities which could threaten public voice over water safety!
- \* **Seek alternative uses for treated Willamette water**, such as industrial or non/food agricultural options.
- \* **Move forward** on the audit of the testing behind the questionable configuration of the Wilsonville plant.
- \* **Resolve district issues** that have prevented the board from moving forward with decisions that could affect public health.
- \* **Make policies that insure safe drinking water** for future generations protecting our children and elderly from could harm their health.

<http://www.tomforsafewater.com>

*(This information furnished by Self)*

# TUALATIN VALLEY WATER

**Commissioner  
Position 5**



**JIM  
DOANE**

**OCCUPATION:** Recently retired Civil Engineer specializing in Water Resources.

**OCCUPATIONAL BACKGROUND:** None.

**EDUCATIONAL BACKGROUND:** BS Engineering, UCLA; MS Civil Engineering, California State University at Long Beach.

**PRIOR GOVERNMENTAL EXPERIENCE:** Washington County ESD (1987-1996); Oregon Seismic Safety Policy Advisory Committee; National Water Sector Critical Infrastructure Protection Advisory Committee.

Jim has been a Board Member of the TVWD since 1998.

Jim and his family (wife and two grown children) have enjoyed the benefits of living in the TVWD for over a quarter century. In late 2002, Jim retired from an engineering career in water resources. Among Jim's responsibilities was the supervision of award winning residential and commercial water conservation programs, emergency management and protecting water systems against disruption by natural and human caused events. Jim was Oregon's American Society of Civil Engineers "Government Engineer of the Year" for 2001.

Jim is a volunteer teacher for students learning English as their second language. He is also a volunteer youth counselor.

Jim knows that over the next four years TVWD will face critical decisions such as:

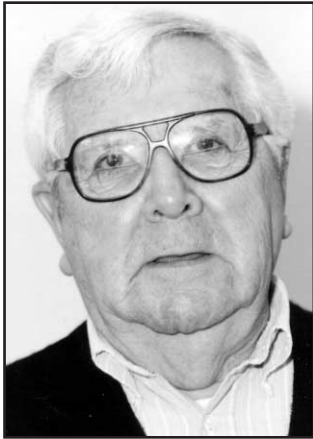
- **Water Quality**---Jim feels it is necessary for TVWD to review the existing water quality standards set by the EPA and the Oregon Health Division to see if they provide sufficient protection, especially for young children. If they do not, then TVWD must set more stringent standards that do.
- **Water Quantity**---Jim knows that intelligent water conservation is the key to establishing a secure cost-effective future supply for the district's citizen. In addition to conservation, it is likely that existing sources such as the Bull Run and the Joint Water Commission will need to be expanded.
- **Water System Security**---As a member of the national Water Sector Critical Infrastructure Protection Advisory Committee, Jim knows what should be protected and how to protect without over doing it.
- **Affordable Water**---Jim will continue to work for affordable water rates.

**For all of these reasons, reelect Jim Doane to the TVWD Board.**

*(This information furnished by Jim Doane)*

# TUALATIN HILLS PARK & RECREATION

## Director Position 4



GEORGE  
F.  
BARNES

**OCCUPATION:** Retired.

**OCCUPATIONAL BACKGROUND:** Hampton Power Products - Sales Dept; Machinery and large Electric Motors mainly to sawmill industry.

**EDUCATIONAL BACKGROUND:** Graduate Milwaukie Union High; 3 yrs Northwest School of Business in Accounting.

**PRIOR GOVERNMENTAL EXPERIENCE:** U.S. Coast Guard 1943-1946.

March 20, 2003

Hello friends, neighbors and those who love the work Tualatin Hills Park and Recreation District has put in to give us a great park system. I need your vote and continued support.

My wife Dorothy and I have lived in the Aloha area for 36 years and our two sons are graduates of Aloha High School. I feel very strongly about giving to the community and as my son's grew up I served the Y Indian Guides as Chief of the Tualatin Nation, Cubmaster of Pack 219 then Scoutmaster of Troop 219. I also served six years on the Commissioners staff for Sunset Trail Boy Scouts of America.

I retired in 1992 from Hampton Power Products where I worked in the Sales Department of machinery and large electric motors mainly used in the timber industry.

I have tried to maintain an active life since retirement and have been serving on the Advisory Committee at the Elsie Stuhr Center in Beaverton for six years. I am currently the Advisory Committee Chairperson.

I consider myself a strong advocate for our senior adults and will continue to do so. I also love and believe in our children and will do everything in my power to keep the kind of park and recreation system we all want to see. I'm sure I am equal to whatever the task requires.

Once again, I ask for your vote and support on May 20, 2003.

Endorsed by:

Max Taggart, owner of Aloha Feed, Garden and Pet.  
Rebekah Albert, Beaverton Loaves and Fishes  
Mabel L Eng, Secretary Council on Aging, Inc., Coordinator and Captain of Carrillon Neighborhood Watch, member of International Training in Communication, Aloha Garden Club Lincoln Eng, citizen.

Very Truly,  
George (Bud) Barnes

*(This information furnished by George F. Barnes)*

## Director Position 4



JOHN  
GRIFFITHS

**OCCUPATION:** Business Development Manager, Intel Corporation.

**OCCUPATIONAL BACKGROUND:** Intel Corporation (1984-Present): Various managerial and staff positions in business development, finance, materials, and logistics; Republic Airlines (1977-1984): Various supervisory and staff positions within airport operations.; National Park Service (1973, 1975): Wildfire control and rescue services within national parks in Oregon and Colorado.

**EDUCATIONAL BACKGROUND:** CMA: 1992, Institute of Management Accounting; MBA (Management): 1984, UCLA; BA (History): 1975, UCSB

**PRIOR GOVERNMENTAL EXPERIENCE:** Board of Directors, THPRD (1999-Present); Chairman and member, Parks and Greenspace Advisory Committee, Metro (1995-1999); Chairman and member, Nature Park Advisory Committee, THPRD (1997-1999); Member, Land Acquisition Ad-hoc Committee, THPRD (1995-1996); Member, Budget Committee, City of Beaverton (1996-1998).

I ask for your vote to continue to serve you on THPRD's Board of Directors. THPRD, one of the finest local park and recreation providers within the United States, is experiencing unprecedented demand for its services during a period of very tight budgets. I will continue to work to ensure that THPRD both provides the highest service levels for the dollars expended and stays responsive to the needs of our growing, dynamic community.

My priorities are to:

- Ensure sound fiscal management, adequate funding, and efficient use of THPRD's limited resources.
- Increase THPRD's partnership efforts with other public agencies, especially in the areas of land acquisition, maintenance, and program delivery.
- Establish recreation facilities and community parks in areas within the District that are deficient in them.
- Increase land acquisitions for trail corridors and greenspaces in order to support livability in our increasingly urban environment.

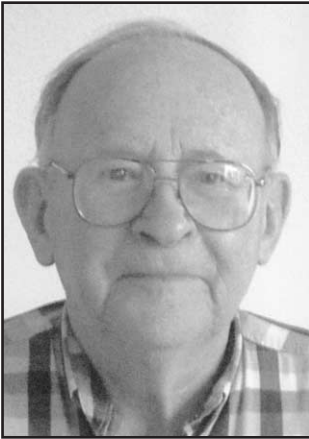
John is endorsed by:

- Dick Schouten, County Commissioner, Washington County
- Cathy Stanton, City Councilor, Beaverton
- Terry Moore, THPRD Board President and Garden Home community volunteer
- Jim Desmond

*(This information furnished by John Griffiths)*

# TUALATIN HILLS PARK & RECREATION

**Director  
Position 4**



**BRUCE  
M.  
POLLOCK**

**OCCUPATION:** Retired.

**OCCUPATIONAL BACKGROUND:** Self-employed Computer instructor.

**EDUCATIONAL BACKGROUND:** Cornell University - BS; University of Rochester - PhD.

**PRIOR GOVERNMENTAL EXPERIENCE:** None.

Bruce M. Pollock

After I recovered from the lymphoma-caused tumor that "ate" my L-3 vertebra, I lead easy hikes for the Denver group of the Colorado Mountain Club until I moved to Portland in 1995. My first experience with trails here was during the development of the Trillium Hollow condominium when Washington County required, but failed to establish, a pedestrian-bicycle trail between Leahy and Cornell roads.

In 1999 I was appointed to the THPRD Cedar Mill Area Ad-Hoc Advisory Committee charged with locating sites for parks and trails in the NE Quadrant of the district. Our 2001 report "Cedar Mill Parks: A Community Vision" included a recommendation for a park between Cornell and Leahy Roads. Because of the generous contribution of land by Mrs. Tilbury, that park is developing and the sign "Roger Tilbury Memorial Park," can be seen at the junction of NW Ash and NW 94th Terrace.

The Ad-Hoc Committee now functions primarily at ceremonies inaugurating locations resulting from our report. I am now a member of the Trails Advisory Committee which is primarily concerned with locating, funding, and building regional trails. My hiking is becoming increasingly restricted to the soft trails between the resting benches in the Tualatin Hills Nature Park.

I am requesting to be elected to the THPRD Board so that I can continue to work on making this rapidly desifying urban area a more livable place by providing parks, trails, and recreational facilities to the rapidly expanding population.

*(This information furnished by Bruce M. Pollock)*

# TUALATIN HILLS PARK & RECREATION

## Director Position 5



JOE  
BLOWERS

**OCCUPATION:** Science Teacher, writer.

**OCCUPATIONAL BACKGROUND:** 17 years middle school science teacher.

**EDUCATIONAL BACKGROUND:** Portland State University; Wayne State College, BS *summa cum laude*.

**PRIOR GOVERNMENTAL EXPERIENCE:** Washington County Bicycle Map Advisory Committee; Washington County Transportation Plan Update Advisory Committee; Tualatin Hills Park and Recreation District- Natural Resources Management Plan Advisory Committee.

Dear Park District Neighbor:

I welcome the opportunity to serve as your representative on the Park District Board. I've lived in the district for 15 years. My family has used many of the District's fine playing fields, trails, swimming pools, and neighborhood parks. For many years I have worked closely with park district staff, students, and neighborhood groups to help restore natural areas within Greenway, Raleighwood, and Bauman Parks. Now I'd like to serve the entire District.

My priorities are:

- Continue to provide first-class facilities for swimming and sports leagues
- Responsibly manage District finances and facilities
- Create new parks and open spaces, especially in poorly served areas
- Support better trail connections between neighborhoods, parks and schools
- Work with volunteer groups to restore wildlife habitat along stream corridors
- Increase working partnerships with schools
- Build on the success of the Stuhr Senior Center to provide greater recreational opportunities for people 55 and over

Endorsements:

John Leeper, Washington County Commissioner  
 Daniel Heagerty, Fans of Fanno Creek  
 Catherine Boyce, swimmer, recreational soccer coach  
 Robert Bothman, trails advocate  
 Kathy Christy  
 Phil Murray, soccer player, youth coach  
 Hal Ballard, bicycling advocate  
 Gail Parker  
 Steve Huggins, basketball player, coach  
 Brad Avakian, Oregon House of Representatives  
 Walt Gorman  
 Dick Schouten, Washington County Commissioner

*(This information furnished by Joe Blowers)*

## Director Position 5



CHAD  
CROMWELL

**OCCUPATION:** Marketing for adidas America, Inc.

**OCCUPATIONAL BACKGROUND:** Accountant and Consultant for Richard Layne, CPA.

**EDUCATIONAL BACKGROUND:** Bachelor of Science Degree in Accounting from Portland State University.

**PRIOR GOVERNMENTAL EXPERIENCE:** None.

**Statement of Endorsement** by Chad Cromwell:

*"Let's not go the way of the State"*

Let's protect our programs & facilities not by efforts to squeeze more by tax, but with careful budget management. Requires recognition of lost jobs, erosion of income from inflation and loss of disposable income. The district cannot run the risk of overextending and thereby falling prey to budget cuts harmful to our senior citizens, adults, and children.

*(This information furnished by Chad Cromwell)*



# TUALATIN HILLS PARK & RECREATION

**Director  
Position 5**



LARRY  
PELATT

**OCCUPATION:** Small Business owner, Lumber wholesale sales, Western Sales, Inc.

**OCCUPATIONAL BACKGROUND:** Columbia Wood Products, 8196 SW Hall Blvd, Beaverton OR; North Pacific Lumber, 1505 SE Gideon, Portland.

**EDUCATIONAL BACKGROUND:** Montana State University B.S. Billings Montana.

**PRIOR GOVERNMENTAL EXPERIENCE:** Local School Committee Fir Grove Elem; Local School Committee - Highland Park MS; Beaverton Board of Site Design & Review (community rep volunteer).

My name is Larry Pelatt and I would like the voters of the Tualatin Hills Park and Recreation District to allow me to serve them as a member of the Board of Directors. As the owner of a small business, I am qualified to participate in making prudent and fiscally sound decisions regarding our budget. The Board of Directors needs to spend our money wisely and make effective decisions to serve the needs of its constituents. I served on the LSC at Fir Grove Elementary which gave me experience in the workings of government. I am currently on the Tualatin Hills Athletic Center Advisory Committee, so I have experience within THPRD. I have been a volunteer coach for 8 years within THPRD, and I have two children who participate in many activities within the District. We need to continue to improve our programs and facilities while focusing on achieving the goals set out in the 20 year master plan adopted in 1997. I will work with the other members of the Board of Directors to maximize the effectiveness of every taxpayer dollar we receive. Tualatin Hills Park and Recreation District is one of the premier districts of its type in the country. We need to support it and do our best, within our budget, to see that the needs of all our user groups and tax paying customers are served. I feel that I am well qualified to serve as a member of this Board. I will do my best to make sure that Tualatin Hills Park and Recreation District lives up to its excellent reputation.

*(This information furnished by Larry Pelatt)*

# TUALATIN VALLEY FIRE & RESCUE

**Director  
Position 5**



**BRIAN  
CLOPTON**

**OCCUPATION:** Small Business Owner – Clopton Excavating.  
**OCCUPATIONAL BACKGROUND:** Small Business Owner past 19 years.  
**EDUCATIONAL BACKGROUND:** None.  
**PRIOR GOVERNMENTAL EXPERIENCE:** Tualatin Valley Fire and Rescue Board of Directors 1998 to present. Secretary Treasurer July, 1999 – June, 2001 and July, 2002 to present.

**As a local business owner** who must remain competitive in these challenging economic times, Brian Clopton brings over twenty years of successful business strategy and decision making skills to the Board of Directors. Working with the public and managing employees has given him valuable perspective on the importance of organizational accountability and quality customer service.

**As a life-long resident of the fire district**, Brian Clopton understands the richness and diversity of his community. Having witnessed the dramatic changes of recent years, he understands the need to balance jobs, housing, transportation, and essential public services such as fire and life safety. In particular, he has come to appreciate the importance of long-term planning in ensuring a safe and livable community.

**As an existing member of the Board of Directors**, Brian Clopton has helped meet the challenges of increased accountability, property tax limitations, and enhanced workers' safety standards. He understands the importance of establishing a sound policy framework while remaining flexible and open minded in meeting new challenges. Moreover, he knows first-hand the importance of intergovernmental cooperation in delivering the best value with limited tax dollars.

Brian Clopton is endorsed by:  
 Rob Drake, Mayor of Beaverton  
 John Leeper, Washington County Commissioner  
 Tualatin Valley Professional Fire Fighters Union, IAFF 1660  
 Renee Benoit, LPN

**Keep Brian Clopton on the Tualatin Valley Fire and Rescue Board of Directors. He has proven his ability to think clearly, plan soundly, and be accountable.**

*(This information furnished by Brian Clopton)*

**Director  
Position 5**



**MITCH  
SHULTS**

**OCCUPATION:** Marketing Executive, Exanet Data Services.  
**OCCUPATIONAL BACKGROUND:** Business Development Executive for Intel and fifteen years as a financial industry consultant/professional.  
**EDUCATIONAL BACKGROUND:** Graduated Magna Cum Laude, Rice University, majoring in Economics and Political Science.  
**PRIOR GOVERNMENTAL EXPERIENCE:** Member of Professional Staff, Oversight Subcommittee of the Interior, U.S. Congress. Former Candidate for Oregon State Treasurer.

**SUPPORT MITCH SHULTS  
 FOR TUALATIN VALLEY FIRE AND RESCUE  
 "BETTER FINANCIAL MANAGEMENT FOR  
 TOUGH BUDGET TIMES"**

**EXPERIENCE IN "911" SUPPORT SYSTEMS**

I was once responsible for building a commercial 911 emergency-services support system. That experience gave me an intimate understanding of the challenges facing the operation of emergency services when it counts – during an actual emergency. Improved emergency dispatch, field training and information systems are all key to making sure our fire and rescue services remain among the best in the nation.

**EXPERIENCE WITH LARGE FINANCIAL SYSTEMS**

As a director of TVF&R, I will bring my background as a systems professional and an executive business manager to bear when handling the district's finances. Especially during tough budget times like these, improved financial controls and prioritization will enhance the quality and cost-effectiveness of TVF&R's operation.

**EXPERIENCED IN GOVERNMENT BUDGETING**

My experience working in the U.S. Congress gives me the background in agency oversight and auditing necessary to ensure that every single taxpayer dollar dedicated to TVF&R is spent appropriately and effectively. Once one has worked with congressional budgets, one can work well with any budget.

In these challenging economic times, TVF&R needs a director who is a qualified business executive with the experience and dedication needed to take TVF&R to the next level of effectiveness. That's why I'm running. Thank you.

*(This information furnished by Mitch Shults)*

# CANDIDATES & MEASURES

## EDUCATION SERVICE DISTRICT

### N W Regional ESD

Director Zone 2	
4 Yr. Term	
	Candace (Candy) Cole
Director Zone 4	
4 Yr. Term	
	Marilyn McGlasson
Director Zone 6	
4 Yr. Term	
	Gail Young

### Willamette ESD

Director Zone 8	
4 Yr. Term	
	Edward (Ed) Glad
Director Zone 10	
At Large	
4 Yr. Term	
	Ruth Hewett
Director Zone 11	
At Large	
4 Yr. Term	
	Bart McElroy

### Clackamas ESD

Director At Large	
4 Yr. Term	
	Curtis (Dick) Smith

### Multnomah ESD

Director Pos. 6	
At Large	
4 Yr. Term	
	Janice Gratton
	Ron McCarty
	Dan Fitzgerald

## PORTLAND COMMUNITY COLLEGE

### Zone 6

Director	
Unexpired	
2 Yr. Term	
	Maureen Breckenridge

### Zone 7

Director	
4 Yr. Term	
	Karen McKinney

## SCHOOL DISTRICT

### Beaverton School

Director Zone 3	
4 Yr. Term	
	Priscilla Turner
	Bob Shook
Director Zone 6	
4 Yr. Term	
	Desmond Murray
	Mike Leopold
Director Zone 7	
4 Yr. Term	
	David F. Hiltner
	Chuck Meyer

### BEAVERTON SCHOOL DISTRICT LOCAL SCHOOL COMMITTEE POSITION

#### Aloha High School LSC

2 Yr. Term - Vote for 3	Martha Brooks
	Jane Coakley
	Charles F. Porcelli

#### Beaverton High School LSC

2 Yr. Term - Vote for 3	Adam Mayer
	Kathleen S. Masarie
	Roger Lewis
	Cary Perkins
	John Seger

#### Southridge High School LSC

2 Yr. Term - Vote for 3	Dan Maks
	Eric N. Johnson
	Ron Royce
	Nancy L. Reed

#### Sunset High School LSC

2 Yr. Term - Vote for 3	Spence Benfield
	Terry Mettler
	Jim Cape
	Robin R. Sanders

#### Westview High School LSC

2 Yr. Term - Vote for 3	Janet G. Hogue
	Randolph Joseph Miller
	Robert L. Woodell

#### Cedar Park Middle School LSC

2 Yr. Term - Vote for 3	Mary Jo Mead
	Pam Leeding
	Leslie Redman

# CANDIDATES & MEASURES

## **Conestoga Middle School LSC**

2 Yr. Term - Vote for 3	Tammy R. Russell
-------------------------	------------------

## **Five Oaks Middle School LSC**

2 Yr. Term - Vote for 3	Barbara Gaillard
	Debi Magee
	Julie R. Aldous
	Karen David

## **Highland Park Middle School LSC**

2 Yr. Term - Vote for 3	Art Bush
	Doug Holmer
	Susan McFadden
	David Waite

## **Meadow Park Middle School LSC**

2 Yr. Term - Vote for 3	Mitchell Moore
	Heather Jarman
	Diana Renn
	Linda M. Degman

## **Mt View Middle School LSC**

2 Yr. Term - Vote for 3	Catherine M. Bome
	M. Michael Painter
	Allyn Ackerson

## **Stoller Middle School LSC**

2 Yr. Term - Vote for 3	Julie Gramer
	Eugenia (Geni) Geannopoulos
	Dawn R. Nelson
	Andy F. Miller
	Susan Day

## **Whitford Middle School LSC**

2 Yr. Term - Vote for 3	Tom W. Hampton
	Janet Penfield
	Jim Athay

## **Aloha Park Elementary School LSC**

2 Yr. Term - Vote for 3	No Candidate Filed
-------------------------	--------------------

## **Barnes Elementary School LSC**

2 Yr. Term - Vote for 3	No Candidate Filed
-------------------------	--------------------

## **Beaver Acres Elementary School LSC**

2 Yr. Term - Vote for 3	Cynthia Graham
	Kathryn Woll

## **Bethany Elementary School LSC**

2 Yr. Term - Vote for 3	Diane McKean
	Catherine Moore

## **Cedar Mill Elementary School LSC**

2 Yr. Term - Vote for 3	Kathleen Bernstein
	Shannon Kroah-Hartman
	Ted Downen

## **Chehalem Elementary School LSC**

2 Yr. Term - Vote for 3	Tyrone Henry
	Jessica J. Kokesh
	Timothy Joseph Weiler

## **Cooper Mt Elementary School LSC**

2 Yr. Term - Vote for 3	Tanya K. Phillips
	Audrey Schiefelbein
	Christine Sinner

## **Elmonica Elementary School LSC**

2 Yr. Term - Vote for 3	Carrie L. Mortimer
	Layne Eric Rockford

## **Errol Hassell Elementary School LSC**

2 Yr. Term - Vote for 3	Tony Beber
	Melinda A. Williamson

## **Findley Elementary School LSC**

2 Yr. Term - Vote for 3	Brenda Sellers
-------------------------	----------------

## **Fir Grove Elementary School LSC**

2 Yr. Term - Vote for 3	Julie Liggins
	Lori Cody
	Michael J. Rose

## **Greenway Elementary School LSC**

2 Yr. Term - Vote for 3	Rob L. Twain
-------------------------	--------------

## **Hazeldale Elementary School LSC**

2 Yr. Term - Vote for 3	No Candidate Filed
-------------------------	--------------------

## **Hiteon Elementary School LSC**

2 Yr. Term - Vote for 3	Tom Love
	Richard Kurschner
	Rhonda Lee Antell
	Steven Sparks

## **Jacob Wismer Elementary School LSC**

2 Yr. Term - Vote for 3	Ernest G. Bootsma
	Ronald A. Maple
	James (Jamie) Watters

## **Kinnaman Elementary School LSC**

2 Yr. Term - Vote for 3	Julie Maederer
	Kathy Johnson
	Victor Walton

## **McKay Elementary School LSC**

2 Yr. Term - Vote for 3	Teri Andersen
	Kim DeSully
	Suzanne Scalfaro

## **McKinley Elementary School LSC**

2 Yr. Term - Vote for 3	Steven Goff
	Mary Ann Galluzzo
	Lee Ann Larsen

# CANDIDATES & MEASURES

**Montclair Elementary School LSC**

2 Yr. Term - Vote for 3	Story Norman
	Carrie Cool
	Warren A. Tyler

**Nancy Ryles Elementary School LSC**

2 Yr. Term - Vote for 3	Cheryl Fogelberg-Billette
	Christi Feldewerth

**Oak Hills Elementary School LSC**

2 Yr. Term - Vote for 3	Kristin Parks
	Stephanie Timmons
	Stephanie Engle

**Raleigh Hills Elementary School LSC**

2 Yr. Term - Vote for 3	Thomas Harbolt
	Eric Kingstad

**Raleigh Park Elementary School LSC**

2 Yr. Term - Vote for 3	Ruth Gooding
	Barbara Lloyd
	Diana Scoggins

**Ridgewood Elementary School LSC**

2 Yr. Term - Vote for 3	Kris Bangs
-------------------------	------------

**Rock Creek Elementary School LSC**

2 Yr. Term - Vote for 3	John J. Breiling
	Geoff T. Smith

**Scholls Heights Elementary School LSC**

2 Yr. Term - Vote for 3	Steven C. McCracken
	Trista C. Casey
	Lori L. Krumm

**Sexton Mt Elementary School LSC**

2 Yr. Term - Vote for 3	Eric Martinson
-------------------------	----------------

**Terra Linda Elementary School LSC**

2 Yr. Term - Vote for 3	No Candidate Filed
-------------------------	--------------------

**Vose Elementary School LSC**

2 Yr. Term - Vote for 3	Jim Crutcher
	Nancy Zurcher

**West Tualatin View Elementary School LSC**

2 Yr. Term - Vote for 3	Scott Oldham
-------------------------	--------------

**William Walker Elementary School LSC**

2 Yr. Term - Vote for 3	Gretchen McNeil
	Bonny Motis
	Heidi H. Willes

**FIRE DISTRICTS**

**Tualatin Valley Fire & Rescue**

Director Pos. 4	
4 Yr. Term	
	Carol Gearin
Director Pos. 5	
4 Yr. Term	
	Brian J. Clopton
	Mitch Shults

**WATER DISTRICTS**

**Raleigh Water**

Commissioner Pos. 1	
4 Yr. Term	
	Babette Horenstein
Commissioner Pos. 3	
Unexpired	
2 Yr. Term	
	Russ Mickiewicz
	Shantu Natvarlal Shah
Commissioner Pos. 4	
4 Yr. Term	
	Phil Gladstein

**Tigard Water**

Commissioner Pos. 1	
Unexpired	
2 Yr. Term	
	No Candidate Filed
Commissioner Pos. 2	
Unexpired	
2 Yr. Term	
	No Candidate Filed
Commissioner Pos. 3	
4 Yr. Term	
	No Candidate Filed
Commissioner Pos. 4	
4 Yr. Term	
	Marc L. Delphine
Commissioner Pos. 5	
4 Yr. Term	
	No Candidate Filed



# CANDIDATES & MEASURES

## Tualatin Valley Water

Commissioner Pos. 4	
4 Yr. Term	
	Richard P. Burke
	Thomas Long
Commissioner Pos. 5	
4 Yr. Term	
	Jim Doane

## West Slope Water

Commissioner Pos. 1	
4 Yr. Term	
	Arthur K. Holmen
Commissioner Pos. 2	
4 Yr. Term	
	A. P. DiBenedetto

## OTHER SPECIAL DISTRICT

## Tualatin Hills Park & Recreation

Director Pos. 4	
4 Yr. Term	
	George F. Barnes
	John Griffiths
	Bruce M. Pollock
Director Pos. 5	
4 Yr. Term	
	Joseph Blowers
	Chad Cromwell
	Larry Pelatt

## MEASURES

### Beaverton School District:

Measure 34-67	
	Local Option Tax to restore some Staff and Student Programs
	Question: Shall District levy up to \$1.50 per \$1000 of assessed value annually for three years beginning 2003-2004 for operations? This Measure may cause property taxes to increase more than three percent.

## BALLOT DROP SITES

**Ballots must be received by 8:00 p.m. Election Day,  
May 20, 2003**



### Washington County 24 hour drop slots

155 N 1<sup>st</sup> Avenue  
Hillsboro  
Rear entrance of the Public Services Building

3700 SW Murray Blvd  
Beaverton  
Front Lobby

Ballots for the May 20, 2003 Special District Election may be deposited at any of the following locations. Phone numbers are provided to confirm the hours.

**Beaverton Library**  
12375 SW 5<sup>th</sup> Street  
Phone: 503-644-2197

**King City – City Hall**  
15300 SW 116<sup>th</sup> Avenue  
Phone: 503-639-4082

**Cedar Mill Library**  
12505 NW Cornell Rd  
Phone: 503-644-0043

**Sherwood City Hall**  
20 NW Washington Street  
Phone: 503-625-5522

**Forest Grove Library**  
2114 Pacific Avenue  
Phone: 503-992-3247

**Tigard City Hall**  
13125 SW Hall Blvd.  
Phone: 503-639-4171

**Tanasbourne Library**  
2453 NW 185<sup>th</sup> Avenue  
Phone: 503-615-6500

**Tualatin City Offices / Library Building**  
18880 SW Martinazzi Avenue  
Phone: 503-692-2000

**West Slope Library**  
3678 SW 78<sup>th</sup> Street  
Phone: 503-292-6416