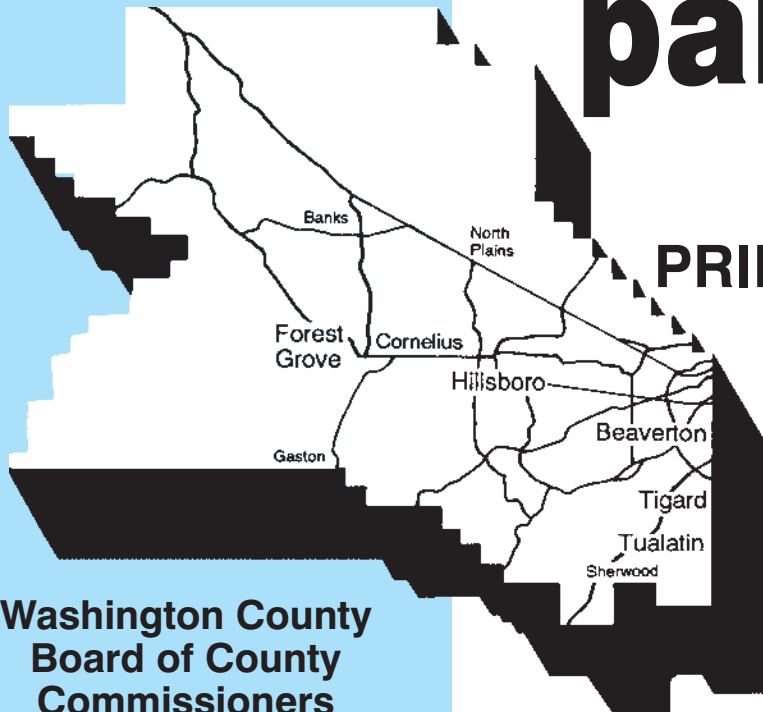




Elections Division
3700 SW Murray Blvd.
Beaverton, OR 97005

Washington County

voters' pamphlet



Washington County Board of County Commissioners

Tom Brian, Chair
Dick Schouten, District 1
John Leeper, District 2
Roy Rogers, District 3
Andy Duyck, District 4

Dear Voter:

This pamphlet contains information for several districts and there may be candidates/measures included that are not on your ballot. If you have any questions, call 503-846-5800.

Attention:

Washington County Elections prints information as submitted. We do not correct spelling, punctuation, grammar, syntax, errors or inaccurate information.

**VOTE-BY-MAIL
PRIMARY ELECTION
MAY 18, 2004**

**To be counted,
voted ballots must
be in our office
by 8:00 pm on
MAY 18, 2004**

Attention:

This is the beginning of your county voters' pamphlet. The county portion of this joint voters' pamphlet is inserted in the center of the state portion. Each page of the county voters' pamphlet is clearly marked with a color bar on the outside edge. All information contained in the county portion of this pamphlet has been assembled and printed by your County Elections Official.



WASHINGTON COUNTY OREGON

May 2004

Dear Washington County Voter:

This part of your Voter's Pamphlet is provided by your Washington County Elections Division. It includes information about candidates and measures from local jurisdictions within the boundaries of Washington County. We have inserted the County Voter Pamphlet into the State Voter Pamphlet to save mailing and production costs. The State Pamphlet (on either side of the color bar portion) includes federal and state candidates as well as state measures.

Recent Federal legislation called the Help America Vote Act (HAVA) has brought some important changes to the election voting process. As part of HAVA compliance, Washington County has converted to optical scan ballots. This pamphlet includes information on how to vote your optical scan ballot, including how to write-in a candidate correctly.

Once you have completed your ballot, you may return it by using one of the following:

24-hour drop sites available May 1, 2004 – May 18, 2004

- Public Services Building, 155 N. First Ave., Hillsboro
(Rear Entrance at 1st and Main)
- Elections Office, 3700 SW Murray Boulevard, Beaverton
(Murray and Millikan)

13 official drop sites located throughout the county.

- Official drop sites are listed on the back page of the county's voters' pamphlet.

Mail your ballot.

- To be counted, Elections must receive your completed ballot before 8:00 PM on Election Day.

If you have any questions, or you need assistance please do not hesitate to contact our office for help.

Sincerely,

Jerry Hanson
Director, Assessment and Taxation
Ex Officio County Clerk

Mickie Kawai
Elections Manager

Department of Assessment & Taxation, Elections Division

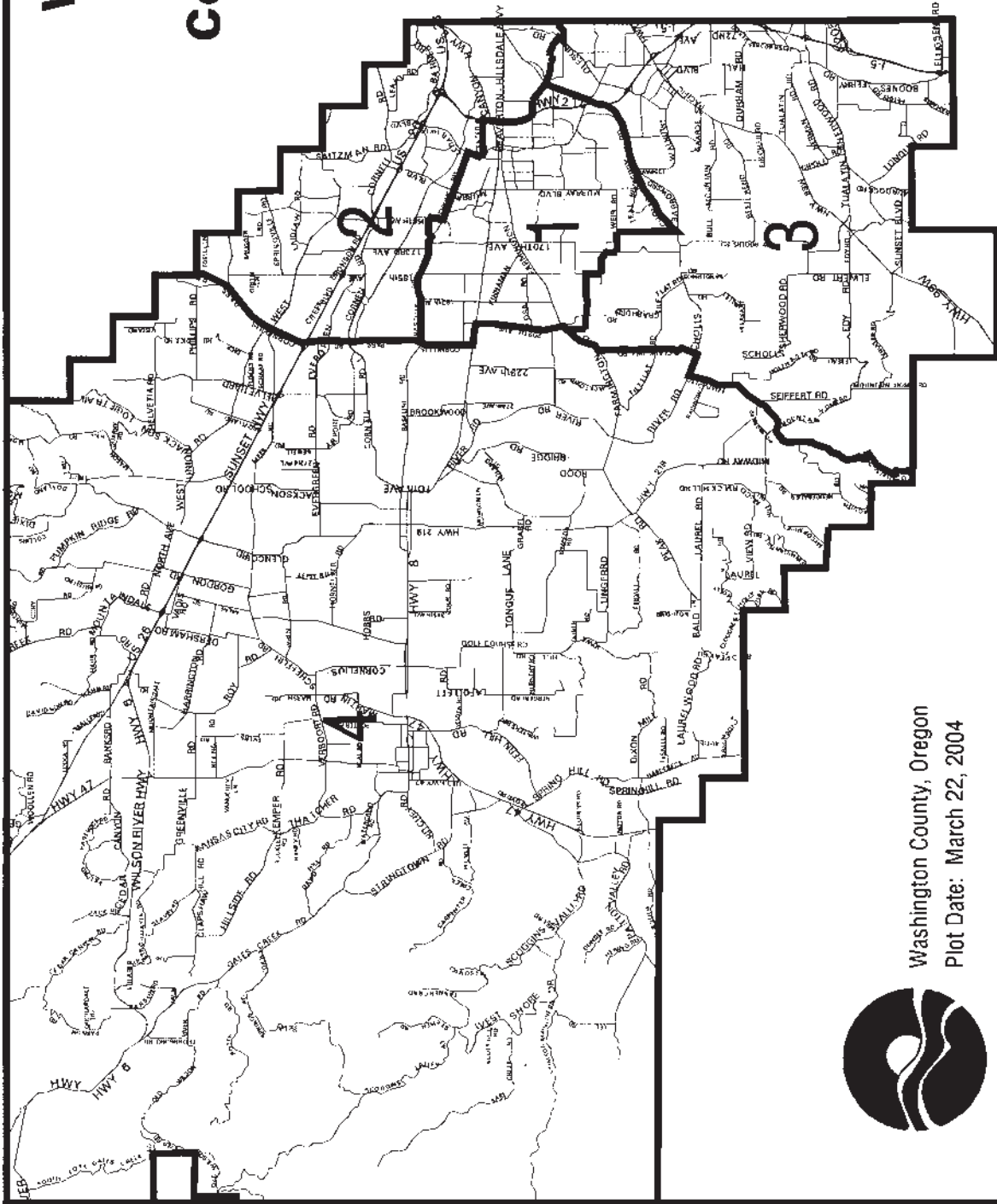
3700 SW Murray Blvd, Suite 101 Beaverton OR 97005

Phone: 503/846-5800 Fax: 503/846-5810

email: election@co.washington.or.us

www.co.washington.or.us/cgi/electhom/main.pl

Washington County Commissioner Districts



Washington County, Oregon
Plot Date: March 22, 2004



WASHINGTON COUNTY

Sheriff

Sheriff



**CHAD
GRAVLEY**
(NONPARTISAN)



**ROB
GORDON**
(NONPARTISAN)

OCCUPATION: Washington County Sheriff Deputy.
OCCUPATIONAL BACKGROUND: Washington County Land Use and Transportation. Stimson Lumber; Banks Lumber; Viking Freight; United States Navy.
EDUCATIONAL BACKGROUND: Forest Grove High School, 12, High School.
PRIOR GOVERNMENTAL EXPERIENCE: Been with Washington County Sheriff's office for 4½ years. Duties include's, Field Training Officer, Inter agency Gang enforcement officer and a variety of other Duties.

I have lived in Washington County for 31 years. I am married to a lovely woman named Jasmin and have 2 beautiful children Lane and Breanna. I have coached Little League baseball in Forest Grove for 3 years. I have worked for Washington County Sheriff's Office for 4½ years. I love my job and like to interact with the Citizens of Washington County. My wife tell's me my only down fall is that I speak my mind. I tell her if I have a problem with something It needs to be brought out in the open and delt with. This is why I am Running for the Office of Sheriff.

(This information furnished by Chad Gravley)

OCCUPATION: Sheriff, Washington County.
OCCUPATIONAL BACKGROUND: 24 years with the Washington County Sheriff's Office, 14 years of senior management experience in police and jail operations.
EDUCATIONAL BACKGROUND: Graduate of George Fox University; Harvard University – JFK School of Government (Senior Executives in State and Local Government); FBI National Academy. Oregon Department of Public Safety Standards and Training Executive Certification in both Police and Corrections, and Instructor Certification. PSU Mark O. Hatfield School of Government Certificate in Public Management.
PRIOR GOVERNMENTAL EXPERIENCE: Chief Deputy Sheriff; Commander of Jail and Patrol operations; Lieutenant; Sergeant. Instructor in leadership and management, police ethics, public sector budgeting, field training program and the Oregon jail inspector certification course. United States Marine Corps, military corrections and military police.

SHERIFF ROB GORDON-AN EXPERIENCED LAW ENFORCEMENT LEADER

"I believe Washington County law enforcement will be facing important decisions in the next decade. It's critical we make those decisions based on solid experience and collaboration with our citizens."

Rob Gordon is the only candidate with both police and corrections management experience. He is widely endorsed by local police chiefs, mayors, Washington County legislators, and sheriffs from surrounding communities.

Rob Gordon is an advocate for:

- Professional standards and agency certification in law enforcement and corrections
- Expanding jail capacity to 2.0 beds for every 1000 residents
- A community-wide approach to solving the methamphetamine crisis
- Targeting of career and prolific criminals
- Interagency enforcement teams
- Crime prevention, Community Education, Child Abuse Education and Awareness
- Efficient use of limited government resources

"....Sheriff Gordon has accomplished a great deal, but I believe his most important achievement has been assembling a terrific new leadership team for the Sheriff's Office."

State of the County 2004, Tom Brian, Chairman, Washington County Commissioners, January 19, 2004

*(This information furnished by
Committee to Keep Rob Gordon Sheriff)*

WASHINGTON COUNTY

Commissioner District 1



**EILEEN
QUTUB**
(NONPARTISAN)

OCCUPATION: Non-profit Advisor.

OCCUPATIONAL BACKGROUND: State Legislator; Small business owner; Executive Director, Non-profit Foundation.

EDUCATIONAL BACKGROUND: BA, Management of Human Resources, George Fox College.

PRIOR GOVERNMENTAL EXPERIENCE: Served Washington County as State Senator and State Representative and served on the following legislative committees: Joint Ways and Means Committee (Transportation and Economic Development Subcommittee; Vice Chair, Public Safety/Regulation Subcommittee, Chair, Human Resource Subcommittee); Chair, Interim Revenue Committee; Chair, Interim Judiciary Committee; Chair, Crime and Corrections Committee; Livability Committee; Public Affairs Committee and others.

I look forward to serving Washington County by:

- Keeping Washington County moving with roads and flexible transportation options.
- Encouraging a healthy economy and jobs by keeping the tax and regulatory burden down.
- Prioritize spending by providing essential services first.
- Maintaining livability in our neighborhoods with full citizen participation.

Eileen Qutub Is A Leader In Education

"Eileen Qutub was a champion for parents and students while serving in the Oregon Legislature. She will be a great asset on the Washington County Commission."

Rob Kremer, Oregon Education Coalition

Eileen Qutub Is An Advocate For The Taxpayer

"As a legislator, Eileen was a great friend of Oregon taxpayers. She made sure that waste and inefficiencies were identified and eliminated. She will be a great addition to the Washington County Commission."

Russ Walker, Oregon Citizens For A Sound Economy PAC

Eileen Qutub Is Proven Leader

"Eileen will make a great Washington County Commissioner. She is a respected leader state-wide and will give Washington County a powerful presence and effective voice."

Yamhill County Commissioner Leslie Lewis

Eileen Qutub Is Both Tough and Smart On Crime

"Eileen Qutub has our support and endorsement."

Steve Doell, Crime Victims United

Eileen Defends Our Livability

"Senator Qutub worked hard to protect Oregon family farmers. She knows how to balance growth and transportation issues -- she is a great consensus builder and problem-solver."

Matt Cyrus, Oregon Family Farm Association PAC

She Has Earned Our Respect and Our Vote!

(This information furnished by Citizens for Eileen Qutub)

Commissioner District 1



**DICK
SCHOUTEN**
(NONPARTISAN)

OCCUPATION: Washington County Commissioner.

OCCUPATIONAL BACKGROUND: Attorney, legal counsel for local governments.

EDUCATIONAL BACKGROUND: UCLA Law School, JD; Santa Clara University, BS Political Science, Magna cum Laude

PRIOR GOVERNMENTAL EXPERIENCE:

- **County Commissioner & Director for Clean Water Services**
- 2003-04 Beaverton Schools' Capital Assets Review Committee
- Tri-County Blue Ribbon Commission for Health Insurance Reform 2002-03

Community Involvement:

- Chair Clean Water Services' Healthy Streams Committee
- County's Aging & Veteran's Services Advisory Council
- Metro's Highway 217 and Greenspaces Advisory Committees
- 2004 "People for Libraries" campaign
- Oregon Parks Providers' 2003 "**Legislator of the Year**"
- Tualatin Riverkeepers' 2002 "Green Heron Award" for **environmental leadership**
- Beaverton Optimists, past President
- West Beaverton Neighborhood Association Committee (NAC), past Chair

I believe that livability and innovative private/public partnerships are keys to our success. My efforts this term have contributed significantly to the following accomplishments:

- 2002-03 private/public analysis and report of County's economy to ensure our **future livability/economic success**
- Creation of "Vision Action Network," an interfaith/public/private effort to meet housing, education and other basic needs in our County
- Creation of Tri-County Safety Net Enterprise for better, cost-effective health care in our County
- Ordinance reducing youth access to tobacco products
- Ordinance making it easier to get rid of serious nuisances
- Pending ordinance making **new development pay its fair share** for parks through growth-impact fees
- Creating a 30-acre hilltop park in west Beaverton/Aloha

"Dick has demonstrated passion for citizen involvement in local government, and he listens." Liles Garcia of Aloha, Washington County's 2003 "Outstanding Community Leader"

"Dick Schouten understands that **jobs are part of livability**." Donald Walton, CEO of Interior Technology

"Commissioner Schouten strongly supports community policing." Sheriff Rob Gordon and Beaverton Police Chief David Bishop

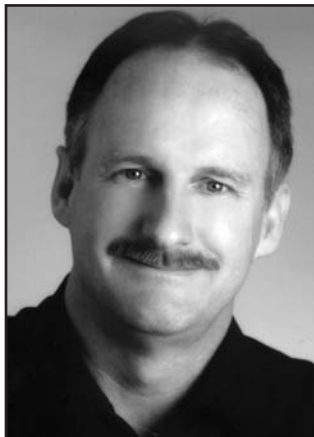
"Commissioner Dick Schouten **works effectively with others** to get things done." Beaverton Mayor Rob Drake

Reach me at (503) 626-5320 or Schouten@aracnet.com to talk about our future and my record. Also see: <http://www.re-elect-dick-schouten.com>

(This information furnished by Neighbors for Dick Schouten)

METRO

Council District 3



STEVE SCHOPP
(NONPARTISAN)

OCCUPATION: Small Businessman.
OCCUPATIONAL BACKGROUND: Contracting.
EDUCATIONAL BACKGROUND: Cleveland High School.
PRIOR GOVERNMENTAL EXPERIENCE: Community activist.

FAMILY: Married 19 years to wife, Sue, one daughter Haley, Sherwood High School senior.

Steve Will Bring Accountability To Metro

Steve is a small business owner and knows the impact that Metro's policies are having on our region. Citizens across Metro have been complaining that their concerns have been ignored, and under Steve's leadership that will change.

Steve Is Fighting For Our Neighborhoods and Our Communities:

Metro's mandated increases in housing densities are having a serious impact on our neighborhoods with increases in traffic congestion, loss of open space, over-crowding of school, and straining our urban services. Steve is a long-time citizen activist and has been working hard to bring balance to Metro's policies. We need his leadership at Metro.

Steve Is The Transportation Candidate

Downtown Portland has been driving the transportation policies for the whole Metro region. The communities in Washington and Clackamas Counties need new road capacity to move people around and to move goods and services to market. Narrowly focused and special interest driven transportation policies are reducing our livability. Steve will fight to bring common sense back to transportation policies.

Dear Voter:

Before you vote, please consider this.

I am running for this Metro position at the urging of many folks. That urging, I am told, is the result of my demonstrating a firm grasp of many issues.

Traffic congestion, jobs, businesses, affordable housing and overall livability are being adversely effected by Metro policies and questionable leadership.

I have attended, observed, and participated in countless public hearings, open houses and other forums. I have studied and written about many problems with traffic congestion, high density in-fill, commuter rail, environmental protection, Urban Renewal, taxes and fees, light rail and other public policies, – as well as alternative remedies.

I believe it is time for change at Metro and I ask for your vote.

Sincerely,
Steve Schopp

e-mail to SteveForMetro@aol.com or visit www.oregonmag.com

(This information furnished by Steve Schopp)

Council District 3



CARL HOSTICKA
(NONPARTISAN)

OCCUPATION: Professor of Public Policy, University of Oregon.

OCCUPATIONAL BACKGROUND: Lecturer-in-Law, SUNY/ Buffalo; Peace Corps, Nepal and India.

EDUCATIONAL BACKGROUND: Massachusetts Institute of Technology, Ph.D.; Brown University, B.A.

PRIOR GOVERNMENTAL EXPERIENCE: Metro Councilor (2000-present), Presiding Officer – 2002; State Representative (1983-94), House Majority Leader; Bureau of Land Management Advisory Committee; Lane County Budget Committee.

CARL HOSTICKA FOR METRO LEADERSHIP FOR A LIVABLE FUTURE

CARL HOSTICKA - EXPERIENCE THAT COUNTS

During twenty years of community leadership, Carl Hosticka helped pioneer innovative policies that make Oregon a great place to live and work. He is a recognized leader on issues that are important to our community, including school funding, transportation, natural resources and government efficiency.

CARL HOSTICKA - PROTECTING OUR COMMUNITIES

Traffic congestion and haphazard development threaten our quality of life. We must protect the quality of our neighborhoods through improved transportation, accessible open spaces, and managing growth.

CARL HOSTICKA - A RECORD OF ACCOMPLISHMENT:

Brought state and local leaders together to acquire open space in Wilsonville and Tualatin.

Led an expansion of the Urban Growth Boundary that provided land for development while protecting existing neighborhoods.

Facilitated coordinated watershed planning in the Tualatin Basin.

CARL HOSTICKA - BRINGING THE REGION TOGETHER

The main reason Carl Hosticka has accomplished so much for our community is the way he brings people together to find common ground. Long before others, Carl worked with both environmental and business leaders to find ways to build our economy and protect or quality of life. He helped change the tax system to bring high paying jobs to Washington and Clackamas Counties. And he joined with his neighbors to protect our open spaces, parks and streams.

LOCAL LEADERS SUPPORT CARL HOSTICKA:

- Rob Drake – Beaverton's Mayor
- Lou Ogden – Tualatin's Mayor
- Charlotte Lehan – Wilsonville's Mayor
- Mark Cottle – Sherwood's Mayor
- John Griffiths – THPRD's President

CONTACT CARL – Call 475-2305 or E-mail chosticka@comcast.net

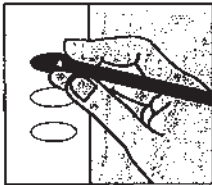
"I've worked hard to keep Oregon the livable and prosperous place we love. I would appreciate your vote in May!"

Carl Hosticka

(This information furnished by Hosticka for Metro Committee)

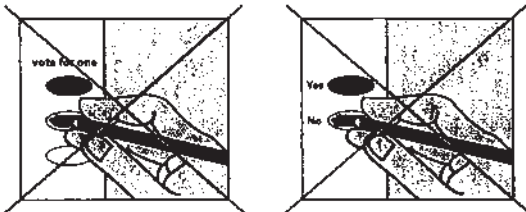
check your ballot!

Make sure you have completely filled in the oval next to your choices.



If you vote for more candidates than allowed, or if you vote **both Yes and No** on a measure, it is called an overvote.

Your vote **will not count** for that candidate or measure.



You do not have to vote on all contests. Those you do vote on will still count.

Contact Washington County Elections (*contact information is on the back of this card*) to request a replacement ballot if:

- you make a mistake
- your ballot is damaged or spoiled
- your ballot is lost

or for any other reason.

1 866 ORE VOTES | Se Habla Español
1 866 350 0596 | TTY

www.oregonvotes.org

ballot dropsites

Ballots must be received by 8pm on Election Day.

24-hour dropsites

Public Services Building

Rear Entrance
155 N 1st Ave
(1st and Main)
Hillsboro

County Office

Front Lobby
3700 SW Murray Blvd
(Murray and Millikan)
Beaverton

other dropsites (*call to confirm hours*)

Banks Library

111 Market St
503 324 1382

Beaverton Library

12375 SW 5th St
503 644 2197

Cedar Mill Library

12505 NW Cornell Rd
503 644 0043

Cornelius Library

1355 N Barlow St
503 357 4093

Forest Grove Library

2114 Pacific Ave
503 992 3247

Garden Home Library

7475 SW Oleson Rd
503 245 9932

King City—City Hall

15300 SW 116th Ave
503 639 4082

Sherwood City Hall

20 NW Washington St
503 625 5522

Shute Park Library

775 SE 10th Ave
503 615 6500

Tanasbourne Library

2453 NW 185th Ave
503 615 6500

Tualatin City Offices

Library Building
18880 SW Martinazzi Ave
503 692 2000

West Slope Library

3678 SW 78th Ave
503 292 6416

Tigard City Hall

13125 SW Hall Blvd
503 639 5522

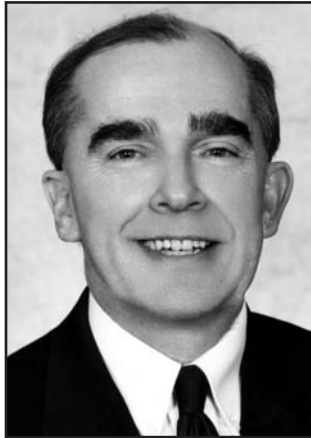
Washington County Elections

3700 SW Murray Blvd Suite 101
Beaverton OR 97005
503 846 5800
www.co.washington.or.us

vote!
Oregon

CITY OF BEAVERTON

Mayor



**ROB
DRAKE**
(NONPARTISAN)

OCCUPATION: Beaverton Mayor.

OCCUPATIONAL BACKGROUND: Director of Operations- Decision Point Data; General Sales Manager-Hinman Vineyards; Sales Manager- Maletis Beverage.

EDUCATIONAL BACKGROUND: Portland State University, M.B.A. Program; B.S. Psychology/Law Enforcement; Sunset HS

PRIOR GOVERNMENTAL EXPERIENCE: Beaverton Mayor (1993-present); City Council (1987-1992); Planning Commission (1981-86); Budget Committee (1987-present); Design Review, Chair (1983-86).

ROB'S STRONG LEADERSHIP MEANS RESULTS

Beaverton's Chief Executive Officer manages 450 full-time city employees, a \$115 million budget, for a population almost 80,000.

"Your positive leadership in Beaverton and the Portland region has really been to the benefit of all citizens in Oregon." –Governor Theodore Kulongoski 2/5/2004

Enhanced Public Safety

- For the second year in a row, Beaverton is recognized as the safest city in Oregon by the 10th Annual Morgan Quitno Press Safest City Awards for cities above 75,000 in population. -Morgan Quitno Press 11/25/03
- We're ranked the 47th safest city nationally for cities above 75,000 population.

Strong Financial Position & Management

- Beaverton City government continues to operate in a business-like way providing efficient and cost-effective services.
- For each year of my service as Mayor, we have been recognized for our outstanding budget, receiving the Government Finance Officers Association (GFOA) top award for our budget process and document.

Citizen-Oriented Land Use

- Beaverton requires developer meeting with neighborhoods **prior** to submitting plans.
- Property owners within 500 feet are **notified of development hearings**—State requires only 100 feet.

MAYOR ROB DRAKE: PRINCIPLED & PROVEN!

AMONG ROB'S SUPPORTERS: State Senators **RYAN DECKER, CHARLIE RINGO**; County Commission Chair **TOM BRIAN**; Beaverton City Councilor's **BETTY BODE, CATHY STANTON, FORREST SOTH, DENNIS DOYLE, FRED RUBY**; Sheriff **ROB GORDON**; Police Chief **DAVID BISHOP**; TVF&R Board President **LARRY GOFF**; School Board Chair **CRAIG IRWIN**; US Senator **GORDON SMITH**; US Congressman **DAVID WU**; Community Leaders **DON WALTON, MARV DOTY**; **OREGON LEAGUE OF CONSERVATION VOTERS (OLCV)**

Paid for and authorized by Friends to RE-ELECT ROB DRAKE, MAYOR, 6775 S.W. 111th Avenue, Beaverton, OR 97008, Donald F. Walton, Treasurer

*(This information furnished by
Friends to Re-Elect Rob Drake Mayor)*

Council Position 3



**CATHY
STANTON**
(NONPARTISAN)

OCCUPATION: Contract worker for small and medium sized companies providing import/export documentation assistance.

OCCUPATIONAL BACKGROUND: 1988-1998—Edward M. Jones & Co., Inc., Portland, OR Custom Broker and Freight Forwarder.

EDUCATIONAL BACKGROUND: California State University @ Chico, B.A. in History and a Secondary Teaching Credential

PRIOR GOVERNMENTAL EXPERIENCE:

INVOLVED:

For more than 20 years Cathy has been actively involved in her neighborhood and our city. Her first contributions started at the neighborhood level:

- Chaired Greenway Neighborhood Association Committee
- Organized the annual Fanno Creek Cleanup in Greenway Park (1988-1991)
- Greenway NAC representative to Beaverton's Committee for Citizen Involvement

INFORMED:

Years of working on a variety of committees and work groups, Cathy has developed an awareness of the issues facing the City of Beaverton. Crime and gangs, traffic and transportation, managing area growth and livability, maintaining the city's infrastructure, a viable business community, school siting and funding, and intergovernmental cooperation are just a few of the continuing challenges facing our communities. Cathy believes that these challenges, along with shrinking government dollars creates a need for all of us to work together, work decisively, and work cost effectively to identify and implement the strategies that will resolve these issues in our community. Cathy is committed to cooperation, consensus and finding solutions.

EXPERIENCED:

- Beaverton City Council (January 1994- present)
- Chair, Beaverton Traffic Commission (1993-Jan 1994)
- Member, Washington County Capital Projects Committee (1993-1995)
- Member, Western Bypass Citizens Advisory Committee
- Current Council Liaison, Library Board
- Previous Council Liaison to Committee for Citizen Involvement and Citizen's with Disabilities Advisory Committee

COMMITTED TO:

- ...a fully staffed (1.5 officers to 1000 citizens) and trained Police Department.
- ...working with all jurisdictions to make Beaverton a safer, better place to live, as envisioned by the citizens of Beaverton.
- ...an active Neighborhood Association Program within the City.

PERSONAL: Cathy, along with her husband and two sons, has lived in Beaverton for over 20 years. She has also volunteered at her church and her children's schools during this same period.

(This information furnished by Cathy Stanton)

CITY OF BEAVERTON

Council Position 4



**KEITH
PARKER**
(NONPARTISAN)

OCCUPATION: Attorney.

OCCUPATIONAL BACKGROUND: Product Development Manager, Nike.

EDUCATIONAL BACKGROUND: JD, Southern Methodist University; MBA, Syracuse University; BA, University of the Pacific.

PRIOR GOVERNMENTAL EXPERIENCE: Chairman, Beaverton Budget Committee; Chairman, Beaverton audit Committee; Citizen's Advisory Committee for the Washington County Transportation Plan Update.

GROWTH: Keith's practical experience will help Beaverton address the challenges related to traffic congestion, housing, and land use issues.

PUBLIC SAFETY: Maintaining a safe, livable community is important to all of us. Keith is committed to making sure law enforcement is a top priority for Beaverton.

EDUCATION: Keith and his wife Kim have two young boys and they know it's essential to support local schools.

ECONOMY: Keith wants to grow our job base. Recently named as one of the top business leaders in our area:

Keith is on a list of "...some of the folks who will be making a big impact on our community during the coming years."

The Business Journal, March 19, 2004

COMMUNITY: As past Vice Chairman of the Highland Neighborhood Association, Keith understands what local residents deserve from their City Council to make Beaverton a great place to live, work and raise a family.

CITIZEN INVOLVEMENT: Keith has served on several advisory panels for local government and civic groups, he knows the City Council works for the people and he will protect our interests.

ACCOUNTABILITY: As Chairman of both the Beaverton Budget and Audit Committees, Keith has a unique perspective on how the city can maximize every tax dollar with efficiencies while maintaining a high quality of service.

BEAVERTON COMMUNITY LEADERS SUPPORT KEITH:

Rob Drake, Beaverton Mayor
Forrest Soth, Beaverton City Councilor
Betty Bode, Beaverton City Councilor
Dave Bishop, Beaverton Police Chief
Mike Osborne, Beaverton School Board Member

www.keithparker.org

(This information furnished by Keith Parker for Beaverton City Council)

Council Position 4



**CATHERINE
ARNOLD**
(NONPARTISAN)

OCCUPATION: Business Analyst / Civic Volunteer.

OCCUPATIONAL BACKGROUND: NASA, Budget/Schedule Analyst Johnson Space Center; Manufacturing Production Planner, Precision Castparts; Business Analyst designing/implementing public/private information systems; A decade of work with State, County, Metro, and City government, Beaverton Chamber, schools, non-profits including Habitat for Humanity, Girl Scouts, Loaves and Fishes, Domestic Violence Resource Center, Centro Cultural.

EDUCATIONAL BACKGROUND: Master's, summa cum laude, Finance, Texas A&M, Bachelor's, magna cum laude, Economics, Texas A&M.

PRIOR GOVERNMENTAL EXPERIENCE: Committee for Citizen Involvement Vice-Chairman; Metro Technical Advisory Committee; Mediator, Dispute Resolution Center; Chairman-elect Chamber of Commerce Leadership Beaverton; Police Citizen's Academy; Social Service Funding Committee.

"Catherine has the best grasp of land use issues of any non-staff member that I have witnessed. I watched her become an expert in issues affecting neighbors and neighborhoods." Roy Dancer, founding member West Beaverton NAC

CATHERINE ARNOLD WILL WORK FOR:

- **TRAFFIC IMPROVEMENTS**- easing congestion.
- **CONSERVATIVE FISCAL POLICY**- to control increasing costs of services.
- **PUBLIC SAFETY**- supporting police to be proactive.
- **CITIZEN INVOLVEMENT**- involving all stakeholders in decisions.

"We are involved in a complex land use matter...Catherine brings people together and ushers in new perspective and agreements. She is open-minded, wise, decisive, unselfish, and invests in others." Tom Vanderzanden, President, Vanderzanden Farms

WE SUPPORT CATHERINE ARNOLD!

State Senator Charlie Ringo
City Councilors: Dennis Doyle, Cathy Stanton, former Councilor Evelyn Brzezinski
Craig Irwin, School Board Chairman; members Ann Jacks, Mike Leopold
Scott Winter, Planning Commission
Scott Knees, Chairman, Holly Isaak, member, Traffic Commission
George Russell, Committee for Citizen Involvement, Chair, Terry Lawler, Treasurer
Jim Persey, Chair, Greenway NAC
Joan Lloyd, Co-Chair, Highland NAC
Sid Snyder, Co-Chair, West Slope NAC
Penny Douglas, Chair, Vose NAC
Oregon League of Conservation Voters
Sister Joan Spearing
Marv Doty, Optimist Club President-Elect
Francine Raften, Citizen Activist
Maureen Wheeler, Chair, Leadership Beaverton

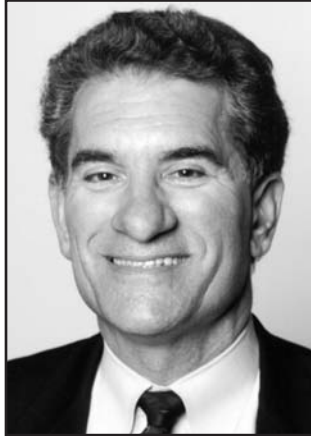
"Her knowledge makes her a valuable asset. I want to work with Catherine Arnold on the Beaverton City Council." Cathy Stanton, City Councilor

VOTE CATHERINE ARNOLD!
www.catherinearnold.info

(This information furnished by Committee to Elect Catherine Arnold)

CITY OF PORTLAND

Mayor



JIM
FRANCESCONI
(NONPARTISAN)

OCCUPATION: City Commissioner.

OCCUPATIONAL BACKGROUND: Small business owner; lawyer.

EDUCATIONAL BACKGROUND: University of Oregon Law School; Stanford University.

PRIOR GOVERNMENTAL EXPERIENCE: Portland Fire Commissioner; chair, Oregon Juvenile Justice Commission.

“Jim Francesconi shares my philosophy about getting government to work for people.”

John Kitzhaber

The Experience to Lead Our City

A small businessman and neighborhood activist, **Jim started a community based youth-to-work coalition** that placed 700 gang-involved youth in jobs with 250 Portland employers.

Jim continued his work as city commissioner **keeping our neighborhoods safe and increasing opportunities for children** by establishing new after-school programs for 5,000 kids across the city.

And Jim brought his business skills to city government – **improving efficiency, eliminating a city bureau and saving taxpayers millions.**

Jim insisted on the performance audit of Portland Public Schools that **cut waste** and helped direct more dollars into classroom learning.

A Mayor with a Back-to-Basics Approach

Jim will make city government do better with the resources we already have.

No one will work harder to bring new accountability to city spending and reject misguided spending projects.

A Plan to Create Jobs, Improve Schools and Ensure Safe Neighborhoods

Jim has the energy and experience and a detailed plan **to lead Portland’s effort to create good jobs and get our economy moving again.**

Jim will work to create quality public schools to provide the foundation our community needs to attract new jobs and give Portland’s next generation the educational opportunities they deserve.

Jim will focus the community’s attention on **solving resurging gang violence by reducing the availability of guns and putting more police on the streets** to ensure safe neighborhoods.

“Jim has been on the front line in the fight to solve our gang problems. We need his leadership.”

Sheriff Bernie Giusto

Also endorsed by the Portland Police Association, Portland Association of Teachers, Portland Metropolitan Association of Realtors, AFSCME Local 189 and hundreds of others.

Dear Portland Voter,

I’d be honored by your vote. Join me in this campaign for Portland
Jim Francesconi

www.JimFrancesconiForMayor.com

(This information furnished by Jim Francesconi for Mayor)

CITY OF PORTLAND

**Commissioner
Position 1**



**SAM
ADAMS**
(NONPARTISAN)

OCCUPATION: Community Advocate.

OCCUPATIONAL BACKGROUND: Chief of Staff, Office of Portland Mayor Katz; Director, Oregon House Democratic Campaign Committee; Assistant, Congressman DeFazio; Dishwasher, Mr. Steak.

EDUCATIONAL BACKGROUND: Portland State; University of Oregon, B.A.

PRIOR GOVERNMENTAL EXPERIENCE: Lane County Public Welfare Board

COMMUNITY INVOLVEMENT: Board Member Cascade Aids Project; Portland Oregon Visitor Association; Innovation Partnership.

**Sam Adams for City Council:
There is a difference.**

What's Different: Sam Adams Helped Create and Save Hundreds of Portland Jobs

Sam rolled up his sleeves to bring in and keep Portland employers including: Banfield, The Pet Hospital; Direct Marketing Solutions, Ampere Electric, Thortex, and others.

"We are moving our company and 100 jobs to Portland because Sam got personally involved. He absolutely made it happen."

Kathy and David Walker, Thortex, manufacturers

And Endorsed by UFCW Local 555

What's Different: Sam Adams Saved Hundreds of Teachers and the Full School Year

Time and again over the last decade, when Portland's public schools faced state legislative cuts, Sam Adams was there, helping lead while others talked.

"Sam understands kids desperately need good teachers and a full school year. He didn't care about credit: he just quietly and effectively helped deliver school funding."

Jane Ames, Pamela Echeverio, Nancy Hamilton, Parent Leaders

Endorsed, Portland Association of Teachers

What's Different: Sam Adams Cut \$30 Million in City Government Waste and Red Tape

Sam cut City bureaucracy and red tape, cleaning up some of the most nagging complaints about doing business with the City.

"What's impressive about [Sam Adams'] plan...[is] that it calls for constant vigilance...pruning of the regulatory overgrowth."

Oregonian 8/13/02

What's Different: Sam Adams is Helping Clean Up the Willamette

Sam helped create the Portland River Trust, which is speeding clean up of the Willamette River.

**Endorsed, Oregon League of Conservation Voters
And Sierra Club**

Learn more about Sam, his personal story and his hundreds of supporters from every corner of Portland.

Visit www.samforpdx.com

**Elect someone we know can put Portland back on track.
Sam Adams for Portland City Council.**

(This information furnished by Sam Adams for City Council)

CITY OF PORTLAND

Commissioner Position 4



**RANDY
LEONARD**
(NONPARTISAN)

OCCUPATION: Portland City Commissioner.

OCCUPATIONAL BACKGROUND: Portland Firefighter, 1978-2002; President, Portland Firefighters Association, 1986-1998.

EDUCATIONAL BACKGROUND: BS, History, Portland State University; Grant H.S.

PRIOR GOVERNMENTAL EXPERIENCE: State Senator 1993-1999; State Representative 1999-2002.

"...Randy Leonard didn't waste any time. He's already shaking things up at City Hall, and that's just what the Portland City Council --and the entire city-- needs these days."

Oregonian, December 21, 2002

Randy Leonard promised something different. He kept his promise.

Fighting for Schools

"Randy played a key role in preventing a devastating teacher's strike in Portland last year. Randy has proven time and again that he will do whatever it takes to make sure Portland's schools are the best they can be. Schools in Portland need Randy Leonard on the city council."

Ann Nice, President, Portland Association of Teachers

Creating Good Jobs

"Randy rolled up his sleeves, went to work and brought companies like Integra Telecom, King Cycle, Heritage Hotels, and their collective 400 jobs and tax bases to Portland. We need leadership like that in Portland."

Ron Beltz, President Emeritus, Portland Business Alliance

Standing up for Neighborhoods

"Randy worked tirelessly fighting powerful lobbyists to pass an ordinance empowering neighborhoods to crack down on misbehaving liquor establishments. Neighborhoods are safer because of Randy Leonard's hard work and commitment to us."

Cameron McCredie, President, Reed Neighborhood Association

Making Portland "Work"

"Randy's work on the Portland City Council has been spectacular. He has created new jobs, fought for neighborhoods and brought common sense to the City Council. Randy has made more positive change in 15 months than I have seen in 15 years."

Mike Lindberg, former Portland City Commissioner

Endorsed by Portland's Best

Portland Firefighters Association - Portland Association of Teachers -
Portland Police Association
...and many, many more

Randy Leonard "...has earned a reputation as a straight-shooting, passionate advocate for the little guy." *Willamette Week May 8, 2002*

Re-Elect Randy Leonard
Making a Difference on City Council

Questions?
503.762.3185

leonard4portland@aol.com
www.randyleonard.com

(This information furnished by Friends of Randy Leonard)

Commissioner Position 4



**FRANK
DIXON**
(NONPARTISAN)

OCCUPATION: Attorney.

OCCUPATIONAL BACKGROUND: Managing Partner; represented consumers for fifteen years in state, federal courts; Treasurer, Neighborhood-PAC 2003-present; Co-chair, Basic Rights Oregon 2002-present; Director, Veterans for Human Rights 2001-present; US Army Reserve, Major (ret'd).

EDUCATIONAL BACKGROUND: B.A., Notre Dame; J.D., Northwestern School of Law.

PRIOR GOVERNMENTAL EXPERIENCE: Assistant, Consultant: Commissioner Saltzman 1999-2002; Chair, Neighbors West/Northwest 1988-90, Public Safety Chair, 1990-92; President, NWDA 1986-88, 2002-present; Vice-Chair, Portland Police Internal Investigations Committee 1993-94; Police Chief's Forum 1992-93; Multnomah County Public Safety Council 1992-93.

FRANK DIXON- for efficient government

Participatory planning made Portland famous. Today, a top-down, bureaucratic approach shuts out **average citizens**, hampers business, and fails educational needs. Frank will push for greater efficiency. His top priorities: **employment growth, and better education funding.**

FRANK DIXON- for public involvement, neighborhood-friendly planning

Frank will **replace confrontation with cooperation**, promoting **open, honest public involvement** in government. **We the people** will shape this city again!

FRANK DIXON- for a healthy environment

Frank is a **proven environmental steward**, working hard for **cleaner air**, and keeping PDX development from damaging North and Northeast Portland.

FRANK DIXON- for community policing

Portland Police Bureau commended Frank's involvement in the Old Town Community Policing Pilot Project. He'll **renew our community policing commitment.**

"Frank has been a dedicated community advocate for decades. **He has the right experience and values. He will listen to the people of this city and make city government accountable to all of us.** He's the people's candidate." -- Bud Clark, former mayor, City of Portland.

"Frank's entire **career** is about involvement and consensus-building. Voters for environmental justice, and pro-choice voters, should support him." -- State Representative Mary Nolan

Dear Neighbor,

For 25 years, I've **fought for Portland's special quality of life.** Our community is long-sighted, unselfish; we can overcome today's challenges with **our talent, diversity, and unique spirit.**

Help **restore** that spirit to City Council! Contact me at 503-242-3585, or www.dixon4council.com.

(This information furnished by Dixon for City Council)

CITY OF PORTLAND

**Commissioner
Position 4**



**AARON
HALL**
(NONPARTISAN)

OCCUPATION: Architect.

OCCUPATIONAL BACKGROUND: American Institute of Architects, 1999-Present; Letter Carrier, USPS, 1991-96; Electrical Engineer, US Navy, 1982-90.

EDUCATIONAL BACKGROUND: Catholic University of America, Washington, DC, M.Arch. and B.S.Arch.; Naval Nuclear Power and Propulsion School, Orlando,FL; West Linn H.S.

PRIOR GOVERNMENTAL EXPERIENCE: Current Board VP, Portland Area Business Association; Portland Business Alliance; Beaumont Wilshire Neighborhood Association; National Association of Letter Carriers; 8-Year Navy Veteran.

PRIOR COMMUNITY EXPERIENCE:
Habitat for Humanity; American Red Cross.

AS YOUR NEXT CITY COMMISSIONER...

AARON...has three priorities: JOBS, JOBS and more JOBS!!

A respected member of Portland's business community, Aaron will combine existing resources with his problem solving skills to **CREATE JOBS IN 3 WAYS:**

- **Streamline** taxes and licensing to help expand our small business employment base (currently almost 85% of Portland's workforce).
- **Promote** expansion of Portland's critical mass industries, such as High Tech, Advertising and Creative Services, Sportswear, and Green Technologies.
- **Recruit** national and international businesses that are attracted by our world-renowned quality of life.

AARON...will be a tireless ADVOCATE for PUBLIC SCHOOLS!!

Aaron's family is the product of four area school districts; Portland, David Douglas, Parkrose and West Linn. He knows first hand how good our schools used to be and he won't rest until they're **RETURNED TO** their former **EXCELLENCE!!**

AARON...will put the CITY back in CITY HALL!!

"Good Citizens are the Riches of a City", *Skidmore Fountain*, 1888
As a third generation Portlander, Aaron knows that the strength of our City comes from the ideas of her Citizens. He will **ENSURE ACCOUNTABILITY** by conducting open and honest debates on every local issue. Everyone will have a voice, in how the City operates. With Aaron as your Commissioner, there will be **NO BACKROOM DEALS, NO FAVORITISM** and above all, **NO HIDDEN AGENDAS.**

**Join the Thousands of Fellow Portlanders who
DEMAND RESULTS from City Hall:**

**VOTE FOR AARON HALL
YOUR NEXT CITY COMMISSIONER!!**

For endorsements and additional information, visit

www.hall4cityhall.com

Questions? Call (503) 810-9121

(This information furnished by Aaron Hall for City Hall)

WASHINGTON COUNTY

Measure No. 34-77

BALLOT TITLE

LOCAL OPTION LEVY TO RESTORE AND MAINTAIN COUNTYWIDE LIBRARY SERVICES

QUESTION: Shall Washington County levy \$.26 per \$1000 assessed value for five years (2004-09) for county-wide library operations?

This measure may cause property taxes to increase more than three percent.

SUMMARY: This measure may be passed only at an election with at least 50% voter turnout.

This levy would fund libraries in Banks, Beaverton, Cedar Mill, Cornelius, Forest Grove, Garden Home, Hillsboro, Sherwood, Tigard, Tualatin, West Slope, developing libraries in North Plains and Gaston, and central support services that link these libraries together.

Approximately 67% of library operating funds come from Washington County Cooperative Library Services.

The levy would:

Restore previously reduced library hours, materials purchases and programs.

Maintain library service levels to meet projected use increases through 2009. Circulation of materials has increased 44% in the last three years.

Restore and maintain central support services that connect libraries, such as the shared computer network, interlibrary deliveries, reference, youth, and outreach programs.

Provide programs for all ages including literary discussions, computer training, homework assistance, and early childhood literacy.

If levy is not approved, likely results include: further reductions in hours, staffing, book purchases and elimination of some existing services.

The levy is a fixed-rate of \$.26 per \$1000 assessed value. A home with average assessed value (not market value) of \$165,000 would pay an additional \$43 in 2004-05.

This levy is estimated to raise \$8,799,032 in 2004-05, \$9,150,993 in 2005-06, \$9,562,788 in 2006-07, \$9,993,113 in 2007-08, and \$10,492,769 in 2008-09.

EXPLANATORY STATEMENT

Washington County Cooperative Library Services (WCCLS) provides funding for countywide library operations, outreach programs, and central services that link together the county's public libraries. On average, 67% of all library operating funds comes from the WCCLS.

Measure 34-77 is a five year local option levy that would restore and maintain public library services in Washington County.

This measure may be passed only at an election with at least 50% voter turnout.

Which public libraries would be funded by this levy?

Banks, Beaverton, Cedar Mill, Cornelius, Forest Grove, Garden Home, Hillsboro (Shute Park and Tanasbourne), Sherwood, Tigard, Tualatin, West Slope and start-up libraries in North Plains and Gaston.

Why is this levy proposed?

Restores library services:

- In November 2002, county residents voted 50.2% to 49.8% not to support a levy to maintain and enhance library services. The levy failure and depletion of library reserves resulted in reduced library funding and services.
- Measure 34-77 would restore previously reduced library hours, materials purchases, and programs.
- It also would restore and maintain central support services that connect libraries, such as the shared computer network, interlibrary deliveries, and reference, youth, and outreach programs.

Maintains service levels to meet projected increases through 2009:

- Since 2000, new or expanded library facilities have been built in Beaverton, Cedar Mill, Forest Grove, and West Slope; construction is underway in Tigard and Garden Home.
- Six additional library expansion projects have been proposed.
- Based on historic trends, circulation of library materials is projected to increase from 6.5 million to 10.7 million items by 2009, or 8.5% annually.
- This levy is limited to library operational costs such as staff, purchase of books and other materials, and utilities. It cannot be used to pay for library construction.

What would the levy pay for?

- Restores funding for operations and maintains public library service levels through 2009 (*average of \$7.13 million per year, 78% of levy*).
- Restores and maintains central services and outreach programs that support and link member libraries (*average of \$2 million per year, 22% of levy*).

What specific library services would be restored and/or maintained?

- Purchasing books and other materials
- Staffing levels and hours of operations for local public libraries
- Support for children's and youth services, such as summer reading programs
- Computer and Internet support and access to electronic resources
- Central support services such as interlibrary deliveries, reference, youth and outreach programs
- Library programs for users of all ages, including book clubs, computer training, homework assistance, and early childhood literacy

How would this levy affect a homeowner's taxes?

The five-year levy has a fixed-rate of 26 cents per \$1,000 of assessed value. If approved, owners of a typical home with a \$165,000 assessed value (different from market value) would pay \$43 in additional property taxes in 2004.

What happens if the levy does not pass?

Without additional funding likely results include further reductions in:

- Hours of library operation
- Library staffing levels
- Purchase of books and other materials
- Existing library programs and services

Submitted by:

Charles D. Cameron
County Administrator

**NO ARGUMENTS AGAINST
THIS MEASURE WERE FILED.**

WASHINGTON COUNTY

Measure No. 34-77**ARGUMENT FOR**

- Our libraries are important.
- Our libraries are a great value.
- Our libraries need our help.

That's why People for Libraries, a citizen-based political action committee, wholeheartedly supports Measure 34-77.

A "Yes" vote majority plus a required turnout of 50% of Washington County's registered voters will give city and community libraries the help they need. The additional money will:

RESTORE LIBRARY SERVICES that were cut since 2002. These include:

- Restoring library hours libraries to pre-2002 levels.
- Restoring book, video, cd, magazine and other material purchases to pre-2002 levels.
- Restoring library staff to pre-2002 levels.

MAINTAIN LIBRARY SERVICES over the next five years. These include:

- Keeping pace with a growth in demand for library services that rises 8.5% per year, far faster than county population increases.

- Enabling city and community libraries to utilize larger facilities built with voter approval or financed by private fundraising.

- Allowing support services provided by Washington County to continue: a centralized reservation and checkout system, multiple locations for returning borrowed books and videos and other cost-effective services that link libraries together.

Libraries are a good value -- one of the few free places open to all. They provide opportunity to learn, entertainment and a good place for kids, families and senior citizens to better themselves. Let's halt the decline since 2002. Let's keep a key "quality of life" component in Washington County healthy.

VOTE FOR MEASURE 34-77. BE SURE YOUR VOTE COUNTS.

Pat Biggs, Tigard, president, People for Libraries; Victor and Dolores Atiyeh, Raleigh Hills; Harry Bodine, Cedar Hills; Jean Butcher, West Slope; Janel Dalin, Cornelius; Carl F. Dyess, Garden Home; Nancy Freeman, Aloha; Alana Graham, Gaston; Christina Hanson, Hillsboro; Bernadette Janet, Tanasbourne; Sherry L. Kam, Cedar Mill; Tony LeMay, Beaverton; Dorothy E. Lukins, Beaverton; Charles McAvoy, Forest Grove; Jo McGeorge, Tualatin; Ed Ohlmann, Banks; Dick Schouten, Beaverton; Michael R. Smith, Forest Grove; Linda Woodbury, Sherwood; Barbara Wright, Rock Creek.

(Paid for by People for Libraries)

Submitted by:
Harry Bodine in behalf of
People for Libraries

The printing of this argument does not constitute an endorsement by Washington County, nor does the county warrant the accuracy or truth of any statement made in the argument.

ARGUMENT FOR

Elected officials of Western Washington County urge a YES VOTE on MEASURE 34-77 – the WCCLS LIBRARY LEVY.

As elected officials, we, the undersigned, recognize the importance of libraries in our communities and support them as a vital ingredient in a healthy American society. The availability of the vast resources at our libraries enables everyone to become a letter and more informed citizen. An informed citizen is better able to participate in a democracy and make wise choices. A wise choice TODAY is to VOTE YES on this library levy. You, the public, elected us to keep your communities civilized places in which to live. Join us in keeping our towns places we all want to live. VOTE YES on MEASURE 34-77. We all benefit.

David Wu Congressman	Scott L. Rice Cornelius City Councilor	Douglas Johnson Hillsboro City Council
Mary Gallegos State Representative	Alfredo Solares-Vega Cornelius City Councilor	Joe Keizur Hillsboro City Council
Charles Starr State Senator	Richard G. Kidd Mayor of Forest Grove	Karen McKinney Hillsboro City Council
Bruce Starr State Senator	Deena Barrett Forest Grove City Council	Cynthia O'Donnell Hillsboro City Council
Andy Duyck Washington Co. Board of Commissioners	Meredith Bliss Forest Grove City Council	Cheri L. Olson Mayor of North Plains

Robert Orlowski Mayor of Banks	Rod Fuiten Forest Grove City Council	Robert Kindel Jr. City Councilor of North Plains
-----------------------------------	---	--

Kirk Andrews Banks City Council	Tom Johnston Forest Grove City Council	Sherrie Simmons City Councilor of North Plains
------------------------------------	---	--

Teri Branstitre Banks City Council	Ronald C. Thompson Forest Grove City Council
---------------------------------------	---

Heidi Duckworth Banks City Council	Peter B. Truax Forest Grove City Council
---------------------------------------	---

Peter Edison Banks City Councilor	Tom Hughes Mayor of Hillsboro
--------------------------------------	----------------------------------

Steve Heinrich Mayor of Cornelius	Mike Castillo Hillsboro City Council
--------------------------------------	---

Ed Dennis Hillsboro City Council

Submitted by:
Charles McAvoy
People for Libraries

The printing of this argument does not constitute an endorsement by Washington County, nor does the county warrant the accuracy or truth of any statement made in the argument.

WASHINGTON COUNTY

Measure No. 34-77

ARGUMENT FOR

Washington County voters have a wonderful opportunity to maintain and support our countywide library system. Because we don't reach into our pockets to buy an expensive ticket each time we visit our local libraries, it's easy to take this incredible community resource for granted. Our libraries are a hub of access to all kinds of information, entertainment, and help. Library users span our entire community of residents - readers seeking popular novels, students in search of the latest research for school assignments, adults with an eye out for new career opportunities. Our library resources are as varied as our library users. Libraries welcome all county residents, providing a center for community activity.

In the last ten years, while Washington County's population increased by 32 percent, our library circulation increased by a whopping 85 percent! Six and a half million items were checked out during the 2003 alone.

Library resources must be continually updated, and collections containing timeless items must be preserved. Computer hardware and software must be reviewed and purchased. It takes a staff of committed librarians, clerks, and technicians to guarantee our libraries continue to provide the services we've come to expect and appreciate. Some of our local libraries have recently reduced hours and days of operation; also, purchases of new materials have slowed, and popular items are not as readily available. These cutbacks were due to the narrow defeat of the WCCLS levy in 2002. Now, we have an opportunity to restore services and staff and keep our libraries growing five years into the future.

Restore our Libraries; Protect Our Access to Free Information; Vote YES on 34-77

Deborah Clarke	Bev Aldrich	Jimmie Darr
Beth Drennen	Scott Bennett	Gordon Faber
Robert Harris	Susan Bremkamp	Shirley Huffman
Doug Johnson	Mary Brown	
Ann Kelsey	Steve Callaway	<i>Former Hillsboro Mayors</i>
Jerry Willey	Aron Carleson	
	Merilee Culligan	
	Edith Lippert	
	JoAnn Lumaco	
	Gail Madsen	
	Mary Ordal	
	Susan Rosenberger	
	Arden Sheets	
	Amy Teufel	

Library Foundation of Hillsboro

Submitted by:
Deborah Clarke
Chair
Hillsboro Library Board

Jerry Willey
President
Hillsboro Library Foundation

The printing of this argument does not constitute an endorsement by Washington County, nor does the county warrant the accuracy or truth of any statement made in the argument.

ARGUMENT FOR

Dear Neighbors:

Funds Measure 34-77 will provide are critically important for restoring and maintaining library services in Washington County including those provided by the Cedar Mill Community Library.

Please join us -- residents of Cedar Mill, Bethany, Cedar Hills. Vote for Measure 34-77.

Dolores and Theodore J. Colombo, David Dennison
Harry and Winona M. Bodine, Sally Bunnell, Gloria Lee,
John R. and Patricia A. Gruher, Mary Campbell, Barbara Getty,
Dorothy and Glenn R. Crawford, Victoria Eggleston,
James A. and Janet K. Johnson, Rita Rivera, Susan Atencio,
Susan Conger, James C.W. and Margaret Ransom,
Arthur S. and Winnifred Danner, Mitzi and Steve Bodine
Sherre and Ted Calouri, Arlen C. and Dorothy L. Cole,
Betty Gerg, Ermalouise E. and John Leeper, Mary Manseau,
Inez R. Reichers, Daniel M. Yaillen, Nancy Spaulding,
Christine Hall, Dina Gross, Karen and Peter Leonard,
Sherry L. Kam, Lori Waldo, Liz Navarrete, William Morris,
Beth Unger, Peter Bock, Diana Palmer, Audrey A. Barto,
Dickson G. and Elizabeth M. Pratt, John W. Thurber,
Mary Candy Barela, Karen Brattan, Patrick A. Cecil,
Karen Dellinger, Luz Fajardo, Ellen Ferguson,
Katherine Foldes, Jennifer Gabriel, Megan Gobble,
Allison Erwin, Mary Ann Hagerty, Kayla R. Klingman,
Woo-Kyung Kim, Bonnie Lamm, Edward L. Locke,
Claudia McNellis, Jacqueline L. Miller, Margaret Osborne,
Kym Croft Miller, Kathy Robinson, Margaret Rogers,
Frank Scotto, Kelly Shelton, Carol Skowron,
RayshreeVachhani, Linda Wethern, Lauretta Young

Paid for by People for Libraries

Submitted by:
Harry Bodine
People for Libraries

The printing of this argument does not constitute an endorsement by Washington County, nor does the county warrant the accuracy or truth of any statement made in the argument.

WASHINGTON COUNTY

Measure No. 34-77**ARGUMENT FOR**

"Have you visited the beautiful library at 5th and Hall? We must continue to fund the operations that go on inside this pride of Beaverton.

In a time of economic uncertainty, local needs become dearer. The Beaverton City Library provides services for the entire community, everything from job hunting workshops, activities and homework help for teens, and access to the Web. People enjoy checking out materials of all kinds: books, CDs, DVDs, videos and books on tape for all age groups. The citizens of Beaverton are proud of our investment in this vibrant community gathering place. To continue our commitment to the Library we need to restore cuts made when the last library levy vote failed in November 2002.

The passage of this measure will allow Beaverton City Library to restore 35% of the book buying budget, staffing levels, Library hours, and essential programs that had to be reduced.

Join us in supporting quality library service for Beaverton! Vote YES for Measure 34 77!"

New Friends of Beaverton City Library
 Carol J. Marshall, Board President
 Barbara Osborne, Treasurer
 Nancy A. Stewart, Manager, Book Corner
 Judi Breazile
 Shirley Swenson
 Martha Firth
 Linda Castleberry
 Marion A. Mirsky
 Pamela J. Farris
 Mary W. Pugsley
 Rob Drake, Mayor of Beaverton
 Homer A. Speer, Jr.
 Gene Tollefsen
 Diane Tollefsen
 Pamela Gilbert-Bugbee
 Rosemary K. Jensen
 Evelyn J. Brzezinski
 Charmagne Ehrenhaus
 Pamela S. Smith
 Robert A. Becker
 Wayne Whitbeck
 Cathy Stanton, Beaverton City Councilor
 Dick Schouten, Washington County Commissioner
 Forrest C. Soth, Beaverton City Councilor
 Dennis Doyle, Beaverton City Councilor
 Ann Doyle
 Fred Ruby, Beaverton City Councilor
 Trisha Parks, Beaverton Educaton Association, President
 State Senator Ryan Deckert
 State Representative Mark Hass
 State Senator Charlie Ringo
 Dorothy E. Lukins

Submitted by:

Carol J. Marshall
 Judi Breazile
 Barbara Osborne
 Nancy A. Stewart
 New Friends of the Beaverton City Library

The printing of this argument does not constitute an endorsement by Washington County, nor does the county warrant the accuracy or truth of any statement made in the argument.

ARGUMENT FOR**Vote YES on Measure 34-77**

A strong library is a cornerstone of a dynamic community!

As educators and education supporters in this county we recognize the need for Library Services to be restored and maintained. The passage of this levy will restore hours of operation and staff, support children and youth services such as summer reading programs, Internet access and support, homework assistance, book clubs and early childhood literacy. All these services can be provided for only 26 cents per \$1000 assessed value of our homes, a small investment in our children's growth and education.

Vote YES on Measure 34-77!

Marilyn McGlasson, *Superintendent, Banks School District*
 Jack Musser, *Forest Grove*

Susan Rodriguez, *Principal, Echo Shaw Elementary*
 Perla Rodriguez, *Principal, Cornelius Elementary*
 Mike Steele, *School Board Chair, Forest Grove School District*
 Herman McCrae-Arrivillaga, *Public School Professional, Forest Grove*
 Ilana Rembelinsky, *Public School Teacher, Forest Grove*
 C.J. Stuart, *Educator, Forest Grove*

Ralph Brown, *School Administrator, Retired, Cornelius*
 Carol Brown, *Former School Board Member, Cornelius*
 Kelly Kuntz, *Instructional Technology Coordinator, Beaverton School District*
 Karen Cunningham, *School Board Member, Beaverton School District*
 Anne Jacks, *School Board Member, Beaverton School District*
 Priscilla Turner, *School Board Member, Beaverton School District*

Theresa Love, *M.A., M.F.A, Portland Community College*
 Beverly Johnson, *English Instructor, Portland Community College*

Philip Creighton, *President, Pacific University*
 Todd Schultz, *Ph.D., Chair, Dept. of Psychology, Pacific University*
 Jim Currie, *Professor, Pacific University*
 Benjamin T. Wakashige, *Library Director, Pacific University*
 David B. Boersema, *Professor, Pacific University*

Submitted by:

Darci Chapman

The printing of this argument does not constitute an endorsement by Washington County, nor does the county warrant the accuracy or truth of any statement made in the argument.

WASHINGTON COUNTY

Measure No. 34-77

ARGUMENT FOR

Measure 34-77 Will Keep Washington County Libraries Healthy for Everyone

For two years Tigard patrons have waited eagerly for the day they can set foot in their new library, scheduled to open this summer. When Tigard voters said "Yes" to a new library in May 2002, they demonstrated their resounding support for their library. But the bond measure paid for the cost of construction only.

Measure 34-77 is a countywide levy. It would provide funds to operate libraries in order to restore and maintain services that were cut or reduced after a November 2002 vote on an operating levy failed by only 611 votes. When the new library opens, Tigard expects library use to increase about 18 percent annually for the next two years. Because Tigard receives more than half of its operating funds from the county, Measure 34-77 would help the new Tigard Library serve the anticipated increase in library use.

Why should you vote for Measure 34-77? Measure 34-77 would strengthen all Washington County libraries. It would allow libraries to reinstate hours of operation lost after the 2002 levy vote. It would provide funds to restore services and staffing levels, purchase materials, maintain Internet support and restore library programs for all ages.

What happens if Measure 34-77 fails? The Tigard Library will be closed more than it is now. Open hours could be reduced to 40-50 hours per week, compared to the 69 hours it had been open for years. If Measure 34-77 passes, the Tigard Library may open up to 72 hours a week.

Is a healthy library worth \$1 a week to you? The average Washington County homeowner would pay less than that if Measure 34-77 passes. If you appreciate storytimes for your children, the ability to find the book, CD or movie you want or having the library open when you can go, vote "Yes" for Measure 34-77.

Friends of the Tigard Library

Submitted by:

George Burgess

Friends of the Tigard Library

The printing of this argument does not constitute an endorsement by Washington County, nor does the county warrant the accuracy or truth of any statement made in the argument.

ARGUMENT FOR

We Washington County residents use our libraries as cultural centers. Our libraries are much more than places to read, study, research and connect with worldwide information systems. They serve as important resources for, not only *information* about our arts, heritage and humanities, but for *experiences* in them through library programs.

A cultural survey recently conducted by the Washington County Cultural Coalition Planning Committee indicated that

- the top three cultural attractions that Washington County residents appreciate are: **Community libraries**, live music and the visual arts
- the three most important aspects of Washington County's heritage to preserve are: Historic sites and buildings; Museums and **Libraries**; and Heritage gardens, farms and plants.
- An *overwhelming* majority of residents said that **government support of arts and culture is essential or important**.

According to the survey, the three cultural issues most important to Washington County residents are:

- Exposing youth to the arts, heritage and culture;*
- Protecting the investment in existing cultural resources/organizations;*
- Providing programs for young adults to further their cultural/artistic development.*

Washington County Libraries do all of these through their resources and programs!

Please VOTE to help reach the required 50% voter turnout. Give this issue a chance. Join members of the Westside Cultural Alliance in voting YES to support our libraries and their vital programs.

Barbara A. Hanson
Bernd R Kuehn
Ramsay Weit
Clarinda White
Mary Carla Veki
Tim Morgan
Margaret Eickmann
Mardelle Widman
Peter Wendel
Sue Wendel
Sean Morgan
Carl Annala

Sharon Maroney
Dennis Doyle
Barbara Forrest
Delilah Judy
Pamela A. Baker
Robert Forrest
Anne N Avery
Larry D. Harvey
Kay Demlow
Marcianna Hosier
Victor Barrios-Mata, Jr.

Submitted by:

Westside Cultural Alliance

The printing of this argument does not constitute an endorsement by Washington County, nor does the county warrant the accuracy or truth of any statement made in the argument.

CITY OF PORTLAND

Measure No. 26-53

Referred to the People by the City Council

BALLOT TITLE

AMENDS CHARTER: CANDIDATES RECEIVING MAJORITY VOTE AT PRIMARY ARE ELECTED

QUESTION: Shall Charter provide that candidates who receive majority vote in Primary Election are elected without further vote at General Election?

SUMMARY: Presently, the Portland City Charter provides that all candidates for City office must be elected at a General Election. Therefore, even when a candidate receives a majority of votes cast at a Primary Election, that candidate appears as the sole candidate on the General Election ballot. The proposed measure will amend the Charter to provide that if a candidate receives a majority of votes cast for an office at the Primary Election, that candidate is elected to that office for the term beginning the following January. As a result, the candidate would not have to appear on the General Election ballot. If no candidate receives a majority of votes cast for the office at the Primary Election, the two candidates receiving the highest number of votes shall appear on the General Election ballot.

If approved, the new election process will be in effect beginning with the May 2006 Primary Election. Candidates elected at either the May Primary Election or November General Election will still take office in January the following year. Current provisions for the filling of vacancies would continue to apply in the event a candidate elected in May fails to qualify and take the oath of office in January.

Submitted by:
Gary Blackmer
Portland City Auditor

EXPLANATORY STATEMENT

This measure amends the Portland City Charter to simplify the process for electing City officials. Currently, the City Charter provides that a candidate who receives a majority of votes at the Primary Election must appear again on the General Election ballot as the sole candidate. This measure provides that if a candidate for an office receives a majority of votes cast at the Primary Election, he or she will be elected without having to appear again on the General Election ballot. In effect, this measure eliminates "single candidate run-offs."

This measure adopts a streamlined election process similar to that provided for in the state statutes for non-partisan elections. Other jurisdictions, including Multnomah County, have adopted and successfully applied this process. Eliminating the requirement that a sole candidate appear on the General Election ballot will reduce election administration and voters' pamphlet printing costs.

In 30 out of 40 elections for City officials since 1980, one candidate has received a majority of the votes cast at the Primary Election and appeared as the sole nominee at the General Election. No write-in candidate has ever come close to defeating a sole nominee.

This measure does not change the election process if no candidate receives a majority vote at the Primary Election. In such cases, the Charter provides that the top two candidates advance to a run-off at the General Election.

**NO ARGUMENTS FOR OR AGAINST
THIS MEASURE WERE FILED.**

SCAPPOOSE SCHOOL DISTRICT 1J

Measure No. 5-119

BALLOT TITLE

THREE YEAR LOCAL OPTION TAX FOR SCAPPOOSE SCHOOL DISTRICT OPERATIONS.

QUESTION: Shall the District levy \$0.53 per \$1,000 of assessed value for three years beginning 2004-2005 for operations? This measure may cause property taxes to increase more than three percent.

SUMMARY: This measure may be passed only at an election with at least a fifty percent voter turnout. This measure authorizes the Scappoose School District 1J to levy property tax in the amount of \$0.53 per \$1,000 assessed value each year for three years. All of the revenue from this tax measure will stay in the Scappoose School District. The taxes would be used to help finance district operations and partially alleviate reductions to staffing and programs. The funds raised by this measure are estimated at \$500,000 per year. This estimated tax cost for this measure is an ESTIMATE ONLY based on the best information available from the county assessor at the time of the estimate.

NO EXPLANATORY STATEMENT FILED

NO ARGUMENTS FOR OR AGAINST
THIS MEASURE WERE FILED.

CORNELIUS RURAL FIRE PROTECTION DISTRICT

Measure No. 34-79

BALLOT TITLE

CORNELIUS RFPD FIVE-YEAR LOCAL OPTION LEVY FOR OPERATIONS

QUESTION: Shall Cornelius RFPD levy \$115,000 per year outside its permanent rate for five years beginning Fiscal Year 2004-2005? This measure may cause property taxes to increase more than three percent.

SUMMARY: This measure may be passed only at an election with at least a 50 percent turnout. The total amount of the tax will be \$115,000 per year for five years or \$575,000 over five years. This measure raises funds required to meet a contractual agreement for emergency services provided by the city of Cornelius to the Cornelius Rural Fire Protection District.

The Fire District permanent tax rate of \$0.6164 does not generate sufficient revenues to cover the Fire District contract for emergency services from the city of Cornelius. The current 5-Year Local Option Levy rate of \$0.8337 per thousand assessed property value approved by District voters in 1998 will expire on June 30, 2004. The District will expire a 10-Year Building Bond Levy of \$0.4821 on June 30, 2004.

The estimated cost of this measure is an estimate only based on the best information available from the County Assessor at the time of the estimate. The estimated tax rate for this new 5-Year Local Option Levy is \$.979 per thousand assessed property value.

The total amount of the tax will be \$115,000 per year for five years or \$575,000 over five years. The tax would begin in Fiscal Year 2004-2005.

Submitted by:
Chris Asanovic
Fire Chief

EXPLANATORY STATEMENT

This ballot measure asks the voters of the Cornelius Rural Fire Protection District to approve a Five-year Local Option ad valorem property tax levy. This measure may be passed only at an election with at least a 50 percent turnout. This raises funds required to meet a contractual agreement for emergency services provided by the City of Cornelius to the Cornelius Rural Fire Protection District.

The Fire District permanent tax rate of \$.6164 does not generate sufficient revenues to cover the Fire District contract for emergency services from the City of Cornelius. In 1998 the Fire District's voters approved a Five-Year Local Option Levy that has funded the District's shortfall these past five years.

The current levy rate of \$0.8337 per thousand assessed property value and a 10-Year Building Bond Levy of \$0.4821 per thousand assessed property value will expire on June 30, 2004. These rates combined with the permanent rate for the prior tax period resulted in a total rate of \$1.9322 per thousand assessed property value.

The estimated tax rate for this new Five-Year Local Option Levy is \$0.979 per thousand assessed property value. This new levy combined with the permanent rate results in a total estimated rate of \$1.5954 per thousand assessed property value; an estimated net reduction of \$0.3368 per thousand assessed property value from the current Fiscal Year 2003-2004 tax.

**NO ARGUMENTS FOR OR AGAINST
THIS MEASURE WERE FILED.**

WASHINGTON COUNTY FIRE DISTRICT NO. 2

Measure No. 34-78

BALLOT TITLE

FIVE-YEAR LOCAL OPTION LEVY FOR PERSONNEL, EQUIPMENT, OPERATING EXPENSES

QUESTION: Shall fire district impose \$.57 per \$1000 of assessed value for five years for personnel, operations, equipment beginning FY2004/2005? This measure may cause property taxes to increase more than three percent.

SUMMARY: This measure may be passed only at an election with at least a 50 percent voter turnout. A "yes" vote on this measure is a vote to increase taxes. The District has gone from a total of four firefighters in 1998 working 8-5, Monday through Friday, to fourteen firefighters providing 24-hour coverage seven days per week. The increase in calls for service and personnel costs have exceeded the growth in revenue levels for the District service area. The District will use the proposed tax revenue to meet current operational costs for full-time and volunteer fire suppression personnel, potentially hire an additional two to three firefighters within the next five years, replace fire apparatus and outdated or obsolete equipment while expanding public education and training programs. The proposed rate will raise approximately \$633,279 in 2004-2005, \$657,027 in 2005-2006, \$680,022 in 2006-2007, \$702,463 in 2007-2008 and \$724,240 in 2008-2009 for a total of \$3,397,030.

EXPLANATORY STATEMENT

Passage of Measure 34-78 would result in an increase in property taxes of .57 per year per \$1,000 of assessed value. For the average homeowner in Washington County Fire District #2 with a home assessed at \$150,000, the annual property tax increase would be \$86. The District's permanent rate is currently 1.1219 per \$1000 of assessed value as set in 1998. Since that time district operation costs have increase 39% and calls for District services have increased 29%. In 1998, the District had four full-time firefighters working 8am to 5pm, Monday through Friday. The District now has 14 firefighters working 24-hour shifts. Costs for the additional firefighters have been paid out of cash reserves, which have now been depleted.

Passage of this measure would allow retention of the current firefighter levels for 24-hour coverage. It would also generate tax revenue to expand volunteer recruitment and retention programs, increase public education programs, and hire additional trained personnel if service needs increase. The revenue would also be used to fund additional training.

Submitted by:
Dennis England
Fire Chief

NO ARGUMENTS AGAINST
THIS MEASURE WERE FILED.

WASHINGTON COUNTY FIRE DISTRICT NO. 2

Measure No. 34-78

ARGUMENT FOR

Vote "yes" on Measure 34-78 to protect our level of emergency response. When a resident of Washington County Fire District #2 dials 9-1-1, time is of the essence. Fire doubles in size every minute. Heart attacks and strokes are life and death emergencies and every second counts. If this local option tax fails, the district will be forced to lay off firefighters and there will no longer be 24-hour emergency coverage.

The District records indicate that Washington County Fire District #2 has not gone to the voters for an increase in operating taxes since the early '80's. As a result of Measure 50, the Oregon Department of Revenue established a permanent rate for the District of \$1.1219 per \$1000 of assessed value. At that time, the District had four paid firefighters, working 8am to 5pm, Monday through Friday with volunteers responding after hours.

Volunteer response has dropped all across the country. Since 1996, the call volume for WCFD#2 has increased by 29%. The area has changed from largely a farming community to commuters. Between full-time jobs and family activities, the increase in call volume has strained even the most dedicated volunteers. At the North Plains Station, the average volunteer response has fallen to 2.78 volunteers per call with 10% of calls receiving no volunteer response.

To ensure that the residents of the District get a response to every 9-1-1 call, the district hired career firefighters to staff the stations 24 hours a day. The career firefighters are out of the station in less than a minute. Response problems have been alleviated but revenues and growth have not kept pace with the operational costs. Over the past two years, the district has relied on cash reserves to support the increased personnel costs, but those reserves are now gone. If this measure fails, the district will have to lay off 6 of the 14 firefighters and provide only daytime emergency coverage. Vote "yes" on measure 34-78.

Submitted by:
Friends of Fire District #2 Committee

The printing of this argument does not constitute an endorsement by Washington County, nor does the county warrant the accuracy or truth of any statement made in the argument.

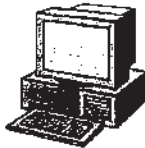
**WATCH WASHINGTON COUNTY
ELECTION RESULTS
ON
MAY 18, 2004**

Starting at 8:00 P.M.

Tualatin Valley Television
On Comcast Cable Channel 30



WEB PAGE



www.co.washington.or.us/cgi/electhom/main.pl

GENERAL INFORMATION

PHONE LINE



(503) 846-5830

Pre-recorded messages regarding:

- Office Hours
- Registration Information
- Election and Ballot Information

www.co.washington.or.us/deptmts/at/election/votarfaq.htm

**VEA RESULTADOS DE LAS ELECCIONES DEL
CONDADO DE WASHINGTON
EN
MAY 18, 2004**

Iniciando a las 8:00 P.M.

Television Tualatin Valley
En Comcast Canal 30



PAGINA EN LA RED ELECTRONICA



www.co.washington.or.us/cgi/electhom/main.pl

INFORMACION GENERAL

LINEA TELEFONICA



(503) 846-5830

Mensaje pre-grabado respecto a:

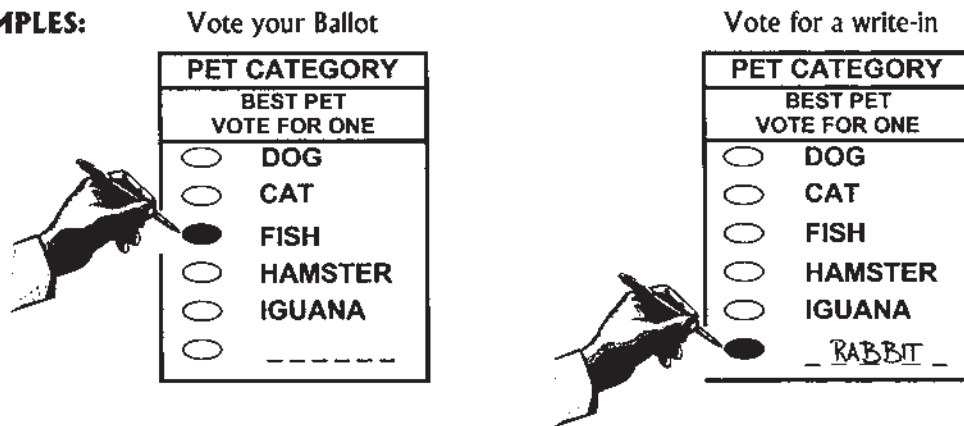
- Horario de Oficina
- Información para registrarse
- Información sobre elecciones y Boleta Electoral
- Preguntas Frecuentes

www.co.washington.or.us/deptmts/at/election/votarfaq.htm

VOTING INSTRUCTIONS

1. To vote you must completely fill in the oval (●) with a black or blue pen or a standard pencil.
2. To Write in a name completely fill in the oval (●) to the left of the dotted line (_ _ _ _ _) and write in the name on the dotted line.
3. The ballot may have contests printed on front and back. Remember to vote both sides.
4. If you make a mistake, or your ballot is damaged, or in need of assistance, you may contact the Elections Office for a new one.

EXAMPLES:



RETURNING THE BALLOT

1. Place only **YOUR** ballot in this secrecy envelope and seal the envelope.
2. Place the sealed secrecy envelope in the return identification envelope (white with color edge) and seal the envelope.
3. **SIGN** the voter's statement on the back of the return identification envelope. Your ballot will **NOT** be counted if the return identification envelope is not **SIGNED**.
4. Mail or deliver the signed and sealed envelope as soon as possible.

Para instrucciones en español, por favor llame a la oficina de Elecciones

WASHINGTON COUNTY ELECTIONS

3700 SW MURRAY BLVD SUITE 101

BEAVERTON OR 97005

Phone: 503-846-5800 Fax: 503-846-5810 TTY: 503-864-4598

election@co.washington.or.us

**OFFICIAL PRIMARY NOMINATING BALLOT
WASHINGTON COUNTY, OREGON • MAY 18, 2004**

<p>REPUBLICAN PARTY NATIONAL</p>	<p>ATTORNEY GENERAL VOTE FOR ONE</p>	<p>STATE REPRESENTATIVE 30TH DISTRICT VOTE FOR ONE</p>
<p>UNITED STATES PRESIDENT VOTE FOR ONE</p>	<p>PAUL CONNOLLY</p>	<p>DERRICK KITTS</p>
<p>GEORGE W. BUSH</p>	<p>-----</p>	<p>-----</p>
<p>UNITED STATES SENATOR VOTE FOR ONE</p>	<p>STATE SENATOR, 14TH DISTRICT VOTE FOR ONE</p>	<p>STATE REPRESENTATIVE 32ND DISTRICT VOTE FOR ONE</p>
<p>PAVEL GOBERMAN</p>	<p>JAY OMDAHL</p>	<p>DOUGLAS S. OLSON</p>
<p>AL KING</p>	<p>-----</p>	<p>ADAM SCHWEND</p>
<p>BRUCE BROUSSARD</p>	<p>STATE SENATOR, 18TH DISTRICT VOTE FOR ONE</p>	<p>-----</p>
<p>E. BOWERMAN</p>	<p>JOHN WIGHT</p>	<p>STATE REPRESENTATIVE 33RD DISTRICT VOTE FOR ONE</p>
<p>PHILIP PETRIE</p>	<p>-----</p>	<p>JOHN JELLUM</p>
<p>THOMAS LEE ABSHIER</p>	<p>STATE REPRESENTATIVE 26TH DISTRICT VOTE FOR ONE</p>	<p>-----</p>
<p>-----</p>	<p>JERRY KRUMMEL</p>	<p>-----</p>
<p>UNITED STATES REPRESENTATIVE IN CONGRESS 1ST DISTRICT VOTE FOR ONE</p>	<p>-----</p>	<p>STATE REPRESENTATIVE 34TH DISTRICT VOTE FOR ONE</p>
<p>JASON DC MESHELL</p>	<p>STATE REPRESENTATIVE 27TH DISTRICT VOTE FOR ONE</p>	<p>NO CANDIDATE FILED</p>
<p>TIM PHILLIPS</p>	<p>GABE SCHOMUS</p>	<p>-----</p>
<p>GOLI AMERI</p>	<p>-----</p>	<p>STATE REPRESENTATIVE 35TH DISTRICT VOTE FOR ONE</p>
<p>-----</p>	<p>STATE REPRESENTATIVE 28TH DISTRICT VOTE FOR ONE</p>	<p>SUZANNE GALLAGHER</p>
<p>STATE</p>	<p>-----</p>	<p>BRAD FUDGE</p>
<p>SECRETARY OF STATE VOTE FOR ONE</p>	<p>RAPHAEL C. ANTICO</p>	<p>PHIL YOUNT</p>
<p>FRED GRANUM</p>	<p>-----</p>	<p>-----</p>
<p>BETSY L. CLOSE</p>	<p>STATE REPRESENTATIVE 29TH DISTRICT VOTE FOR ONE</p>	<p>STATE REPRESENTATIVE 37TH DISTRICT VOTE FOR ONE</p>
<p>-----</p>	<p>MARY GALLEGOS</p>	<p>SCOTT BRUUN</p>
<p>STATE TREASURER VOTE FOR ONE</p>	<p>-----</p>	<p>-----</p>
<p>JEFF CATON</p>	<p>-----</p>	<p>-----</p>
<p>-----</p>	<p>-----</p>	<p>-----</p>

**OFFICIAL PRIMARY NOMINATING BALLOT
WASHINGTON COUNTY, OREGON • MAY 18, 2004**

<p>STATE REPRESENTATIVE 38TH DISTRICT VOTE FOR ONE</p> <p>NO CANDIDATE FILED</p> <p>-----</p>	<p>ATTORNEY GENERAL VOTE FOR ONE</p> <p>HARDY MYERS</p> <p>-----</p>	<p>STATE REPRESENTATIVE 30TH DISTRICT VOTE FOR ONE</p> <p>MIKLOSCH (MIK) SANDER</p> <p>-----</p>
<p>DEMOCRATIC PARTY NATIONAL</p> <p>UNITED STATES PRESIDENT VOTE FOR ONE</p> <p>LYNDON H. LAROUCHE, JR.</p> <p>JOHN F. KERRY</p> <p>DENNIS J. KUCINICH</p> <p>-----</p>	<p>STATE SENATOR, 14TH DISTRICT VOTE FOR ONE</p> <p>RYAN DECKERT</p> <p>-----</p>	<p>STATE REPRESENTATIVE 32ND DISTRICT VOTE FOR ONE</p> <p>DEBORAH BOONE</p> <p>ROSEMARY BAKER-MONAGHAN</p> <p>-----</p>
<p>UNITED STATES SENATOR VOTE FOR ONE</p> <p>RON WYDEN</p> <p>-----</p>	<p>STATE SENATOR, 18TH DISTRICT VOTE FOR ONE</p> <p>GINNY BURDICK</p> <p>-----</p>	<p>STATE REPRESENTATIVE 33RD DISTRICT VOTE FOR ONE</p> <p>MITCH GREENLICK</p> <p>FRANK W. SAXTON</p> <p>-----</p>
<p>UNITED STATES REPRESENTATIVE IN CONGRESS 1ST DISTRICT VOTE FOR ONE</p> <p>DAVID WU</p> <p>-----</p>	<p>STATE REPRESENTATIVE 26TH DISTRICT VOTE FOR ONE</p> <p>RICK ROSS</p> <p>-----</p>	<p>STATE REPRESENTATIVE 34TH DISTRICT VOTE FOR ONE</p> <p>BRAD AVAKIAN</p> <p>-----</p>
<p>STATE</p> <p>SECRETARY OF STATE VOTE FOR ONE</p> <p>BILL BRADBURY</p> <p>PAUL DAMIAN WELLS</p> <p>-----</p>	<p>STATE REPRESENTATIVE 27TH DISTRICT VOTE FOR ONE</p> <p>TIMOTHY MICHAEL</p> <p>MARK HASS</p> <p>-----</p>	<p>STATE REPRESENTATIVE 35TH DISTRICT VOTE FOR ONE</p> <p>LARRY GALIZIO</p> <p>-----</p>
<p>STATE TREASURER VOTE FOR ONE</p> <p>RANDALL EDWARDS</p> <p>-----</p>	<p>STATE REPRESENTATIVE 28TH DISTRICT VOTE FOR ONE</p> <p>JEFF BARKER</p> <p>-----</p> <p>STATE REPRESENTATIVE 29TH DISTRICT VOTE FOR ONE</p> <p>CHUCK RILEY</p> <p>ELENA UHING</p> <p>-----</p>	<p>STATE REPRESENTATIVE 37TH DISTRICT VOTE FOR ONE</p> <p>GERRITT ROSENTHAL</p> <p>JIM MORTON</p> <p>-----</p>

**OFFICIAL PRIMARY NOMINATING BALLOT
WASHINGTON COUNTY, OREGON • MAY 18, 2004**

<p>STATE REPRESENTATIVE 38TH DISTRICT VOTE FOR ONE</p> <p>GREG MACPHERSON</p> <p>-----</p>	<p>JUDGE OF THE COURT OF APPEALS POSITION 9 VOTE FOR ONE</p> <p>MARY J. DEITS <i>Incumbent</i></p> <p>-----</p>	<p>METRO</p> <p>METRO COUNCILOR, DISTRICT 3 VOTE FOR ONE</p> <p>STEVE SCHOPP</p> <p>CARL HOSTICKA</p> <p>-----</p>
<p>NONPARTISAN STATE JUDICIARY</p> <p>JUDGE OF THE SUPREME COURT POSITION 4 VOTE FOR ONE</p> <p>JAMES E. LEUENBERGER</p> <p>RIVES KISTLER <i>Incumbent</i></p> <p>-----</p>	<p>JUDGE OF THE CIRCUIT COURT 20TH DISTRICT, POSITION 1 VOTE FOR ONE</p> <p>THOMAS W. KOHL <i>Incumbent</i></p> <p>-----</p>	<p>CITY OF BEAVERTON</p> <p>MAYOR VOTE FOR ONE</p> <p>ROB DRAKE</p> <p>-----</p>
<p>JUDGE OF THE SUPREME COURT POSITION 7 VOTE FOR ONE</p> <p>WILLIAM RIGGS <i>Incumbent</i></p> <p>RUDY M. MURGO</p> <p>-----</p>	<p>JUDGE OF THE CIRCUIT COURT 20TH DISTRICT, POSITION 8 VOTE FOR ONE</p> <p>GAYLE A. NACHTIGAL <i>Incumbent</i></p> <p>-----</p>	<p>CITY COUNCIL, POSITION 3 VOTE FOR ONE</p> <p>CATHY STANTON</p> <p>-----</p>
<p>JUDGE OF THE COURT OF APPEALS POSITION 7 VOTE FOR ONE</p> <p>PHIL BROCKETT</p> <p>ROBERT WOLLHEIM <i>Incumbent</i></p> <p>-----</p>	<p>JUDGE OF THE CIRCUIT COURT 20TH DISTRICT, POSITION 10 VOTE FOR ONE</p> <p>SUZANNE M. UPTON <i>Incumbent</i></p> <p>-----</p>	<p>CITY COUNCIL, POSITION 4 VOTE FOR ONE</p> <p>KEITH PARKER</p> <p>CATHERINE ARNOLD</p> <p>-----</p>
<p>JUDGE OF THE SUPREME COURT POSITION 5 VOTE FOR ONE</p> <p>W. MICHAEL (MICK) GILLETTE <i>Incumbent</i></p> <p>-----</p>	<p>NONPARTISAN COUNTY</p> <p>COUNTY SHERIFF VOTE FOR ONE</p> <p>CHAD GRAVLEY</p> <p>ROB GORDON</p> <p>STEPHEN ALAN WILHELM</p> <p>-----</p>	<p>-----</p>
<p>JUDGE OF THE COURT OF APPEALS POSITION 4 VOTE FOR ONE</p> <p>VIRGINIA L. LINDER <i>Incumbent</i></p> <p>-----</p>	<p>COUNTY COMMISSIONER DISTRICT 1 VOTE FOR ONE</p> <p>EILEEN QUTUB</p> <p>DICK SCHOUTEN</p> <p>-----</p>	<p>-----</p>

**OFFICIAL PRIMARY NOMINATING BALLOT
WASHINGTON COUNTY, OREGON • MAY 18, 2004**

CITY OF PORTLAND	COMMISSIONER, POSITION NO. 1	CITY OF PORTLAND
MAYOR, VOTE FOR ONE	VOTE FOR ONE	REFERRED TO THE PEOPLE BY THE CITY COUNCIL
ROZZ REZABEK-WRIGHT	AQUILES U. MONTAS	26-53 AMENDS CHARTER: CANDIDATES RECEIVING MAJORITY VOTE AT PRIMARY ARE ELECTED.
JEFFREY C. REMPFER	NICK FISH	QUESTION: Shall Charter provide that candidates who receive majority vote in Primary Election are elected without further vote at General Election?
ROSALINDA S. MITCHELL	JASON NEWELL	SUMMARY: Presently, the Portland City Charter provides that all candidates for City office must be elected at a General Election. Therefore, even when a candidate receives a majority of votes cast at a Primary Election, that candidate appears as the sole candidate on the General Election ballot. The proposed measure will amend the Charter to provide that if a candidate receives a majority of votes cast for an office at the Primary Election, that candidate is elected to that office for the term beginning the following January. As a result, the candidate would not have to appear on the General Election ballot. If no candidate receives a majority of votes cast for the office at the Primary Election, the two candidates receiving the highest number of votes shall appear on the General Election ballot.
BRAD TAYLOR	WOODROW (WOODY) BROADNAX	YES
JEFF R. TAYLOR	JERRY WATSON	NO
CRAIG GIER	BRIAN H. SMITH	
JIM FRANCESCONI	SAM ADAMS	
PETER NILSSON	COMMISSIONER POSITION NO. 4, VOTE FOR ONE	
SCOT (EXTREMO THE CLOWN) CAMPBELL	BONNY MCKNIGHT	
SCOTT KETCHUM	LEONARD GARD	
MICHAEL BENKOSKI	PAUL LEISTNER	
PHIL BUSSE	RANDY LEONARD	
LORI BALKEMA	MARK LLOYD LAKEMAN	
DONALD J. PFAU	JIM WHITTENBURG	
TOM POTTER	FRANK DIXON	
JAMES L. POSEY	SCOTT STEPHENS	
JIM (SPAGG) SPAGNOLA	MARY ANN SCHWAB	
LEW HUMBLE	ALICIA SALAZ	
ROBERT TED HINDS	AARON F. HALL	
BRUCE W. HOLLEN		
BART HANSON		
DAVID (THE ACK) ACKERMAN		
R. JERRY ADAMS		

**OFFICIAL PRIMARY NOMINATING BALLOT
WASHINGTON COUNTY, OREGON • MAY 18, 2004**

<p>WASHINGTON COUNTY LIBRARY</p>	<p>WASHINGTON COUNTY FIRE DISTRICT NO. 2</p>	<p>CORNELIUS RURAL FIRE PROTECTION DISTRICT</p>
<p>34-77 LOCAL OPTION LEVY TO RESTORE AND MAINTAIN COUNTYWIDE LIBRARY SERVICES</p>	<p>34-78 FIVE-YEAR LOCAL OPTION LEVY FOR PERSONNEL, EQUIPMENT, OPERATING EXPENSES</p>	<p>34-79 CORNELIUS RFPD FIVE-YEAR LOCAL OPTION LEVY FOR OPERATIONS</p>
<p>QUESTION: Shall Washington County levy \$.26 per \$1000 assessed value for five years (2004-09) for countywide library operations? This measure may cause property taxes to increase more than three percent.</p>	<p>QUESTION: Shall fire district impose \$.57 per \$1000 of assessed value for five years for personnel, operations, equipment beginning FY2004/2005? This measure may cause property taxes to increase more than three percent.</p>	<p>QUESTION: Shall Cornelius RFPD levy \$115,000 per year outside its permanent rate for five years beginning Fiscal Year 2004-2005? This measure may cause property taxes to increase more than three percent.</p>
<p>SUMMARY: This measure may be passed only at an election with at least 50% voter turnout.</p>	<p>SUMMARY: This measure may be passed only at an election with at least a 50 percent voter turnout. A "yes" vote on this measure is a vote to increase taxes. The District has gone from a total of four firefighters in 1998 working 8-5, Monday through Friday, to fourteen firefighters providing 24-hour coverage seven days per week. The increase in calls for service and personnel costs have exceeded the growth in revenue levels for the District service area. The District will use the proposed tax revenue to meet current operational costs for full-time and volunteer fire suppression personnel, potentially hire an additional two to three firefighters within the next five years, replace fire apparatus and outdated or obsolete equipment while expanding public education and training programs. The proposed rate will raise approximately \$633,279 in 2004-2005, \$657,027 in 2005-2006, \$680,022 in 2006-2007, \$702,463 in 2007-2008 and \$724,240 in 2008-2009 for a total of \$3,397,030.</p>	<p>SUMMARY: This measure may be passed only at an election with at least a 50 percent turnout. The total amount of the tax will be \$115,000 per year for five years or \$575,000 over five years. This measure raises funds required to meet a contractual agreement for emergency services provided by the city of Cornelius to the Cornelius Rural Fire Protection District.</p>
<p>This levy would fund libraries in Banks, Beaverton, Cedar Mill, Cornelius, Forest Grove, Garden Home, Hillsboro, Sherwood, Tigard, Tualatin, West Slope, developing libraries in North Plains and Gaston, and central support services that link these libraries together.</p>	<p>The Fire District permanent tax rate of \$0.6164 does not generate sufficient revenues to cover the Fire District contract for emergency services from the city of Cornelius. The current 5-Year Local Option Levy rate of \$0.8337 per thousand assessed property value approved by District voters in 1998 will expire on June 30, 2004. The District will expire a 10-Year Building Bond Levy of \$0.4821 on June 30, 2004.</p>	<p>The Fire District permanent tax rate of \$0.6164 does not generate sufficient revenues to cover the Fire District contract for emergency services from the city of Cornelius. The current 5-Year Local Option Levy rate of \$0.8337 per thousand assessed property value approved by District voters in 1998 will expire on June 30, 2004. The District will expire a 10-Year Building Bond Levy of \$0.4821 on June 30, 2004.</p>
<p>Approximately 67% of library operating funds come from Washington County Cooperative Library Services.</p>	<p>The estimated cost of this measure is an estimate only based on the best information available from the County Assessor at the time of the estimate. The estimated tax rate for this new 5-Year Local Option Levy is \$.979 per thousand assessed property value.</p>	<p>The estimated cost of this measure is an estimate only based on the best information available from the County Assessor at the time of the estimate. The estimated tax rate for this new 5-Year Local Option Levy is \$.979 per thousand assessed property value.</p>
<p>The levy would:</p>	<p>YES</p>	<p>YES</p>
<p>Restore previously reduced library hours, materials purchases and programs.</p>	<p>NO</p>	<p>NO</p>
<p>Maintain library service levels to meet projected use increases through 2009. Circulation of materials has increased 44% in the last three years.</p>	<p>YES</p>	<p>YES</p>
<p>Restore and maintain central support services that connect libraries, such as the shared computer network, interlibrary deliveries, reference, youth, and outreach programs.</p>	<p>NO</p>	<p>NO</p>
<p>Provide programs for all ages including literary discussions, computer training, homework assistance, and early childhood literacy.</p>	<p>YES</p>	<p>YES</p>
<p>If levy is not approved, likely results include: further reductions in hours, staffing, book purchases and elimination of some existing services.</p>	<p>NO</p>	<p>NO</p>
<p>The levy is a fixed-rate of \$.26 per \$1000 assessed value. A home with average assessed value (not market value) of \$165,000 would pay an additional \$43 in 2004-05.</p>	<p>YES</p>	<p>YES</p>
<p>This levy is estimated to raise \$8,799,032 in 2004-05, \$9,150,993 in 2005-06, \$9,562,788 in 2006-07, \$9,993,113 in 2007-08, and \$10,492,769 in 2008-09.</p>	<p>NO</p>	<p>NO</p>
<p>YES</p>	<p>NO</p>	<p>NO</p>
<p>NO</p>	<p>YES</p>	<p>YES</p>
<p>NO</p>	<p>NO</p>	<p>NO</p>

**OFFICIAL PRIMARY NOMINATING BALLOT
WASHINGTON COUNTY, OREGON • MAY 18, 2004**

**SCAPPOOSE
SCHOOL DISTRICT 1J**

**5-119 THREE YEAR LOCAL OPTION
TAX FOR SCAPPOOSE SCHOOL
DISTRICT OPERATIONS**

QUESTION: Shall the District levy \$0.53 per \$1,000 of assessed value for three years beginning 2004-2005 for operations? This measure may cause property taxes to increase more than three percent.

SUMMARY: This measure may be passed only at an election with at least a fifty percent voter turnout. This measure authorizes the Scappoose School District 1J to levy property tax in the amount of \$0.53 per \$1,000 assessed value each year for three years. All of the revenue from this tax measure will stay in the Scappoose School District. The taxes would be used to help finance district operations and partially alleviate reductions to staffing and programs. The funds raised by this measure are estimated at \$500,000 per year. This estimated tax cost for this measure is an ESTIMATE ONLY based on the best information available from the county assessor at the time of the estimate.

YES


NO

END OF BALLOT

VOTING INSTRUCTIONS


1. To vote you must completely fill in the oval (●) with a black or blue pen or a standard pencil.
2. To Write in a name completely fill in the oval (●) to the left of the dotted line (_____) and write in the name on the dotted line.
3. The ballot may have contests printed on front and back. Remember to vote both sides.
4. If you make a mistake, or your ballot is damaged, or in need of assistance, you may contact the Elections Office for a new one.

EXAMPLE:
BEST PET
 Vote your ballot (VOTE FOR ONE)



- DOG
- CAT
- FISH
- HAMSTER
- IGUANA
- _____

EXAMPLE:
BEST PET
 Write in Vote (VOTE FOR ONE)



- DOG
- CAT
- FISH
- HAMSTER
- IGUANA
- RABBIT

Para instrucciones en español, por favor llame a la oficina de Elecciones

BALLOT DROP SITES

Ballots must be received by 8:00 p.m. Election Day, May 18, 2004

Washington County 24 hour drop slots

155 N 1st Avenue
 Hillsboro
 Rear entrance of the Public Services Bldg
 (1st and Main)

3700 SW Murray Blvd
 Beaverton
 Front Lobby (Murray and Millikan)

.....

Other County Locations

Phone numbers are provided to confirm the hours.

Banks Library
 111 Market St
 503-324-1382

Beaverton Library
 12375 SW 5th St
 503-644-2197

Cedar Mill Library
 12505 NW Comeil Rd
 503-644-0043

Cornelius Library
 1355 N Barlow St
 503-357-4093

Forest Grove Library
 2114 Pacific Ave
 503-992-3247

Garden Home Library
 7475 SW Oleson Rd
 503-245-9932

King City – City Hall
 15300 SW 116th Ave
 503-639-4082

Sherwood City Hall
 20 NW Washington St
 503-625-5522

Shute Park Library
 775 SE 10th Ave
 503-615-6500

Tanasbourne Library
 2453 NW 185th Ave
 503-615-6500

Tigard City Hall
 13125 SW Hall Blvd.
 503-639-4171

**Tualatin City Offices /
 Library Building**
 18880 SW Martinazzi Ave
 503-692-2000

West Slope Library
 3678 SW 78th Ave
 503-292-6416