



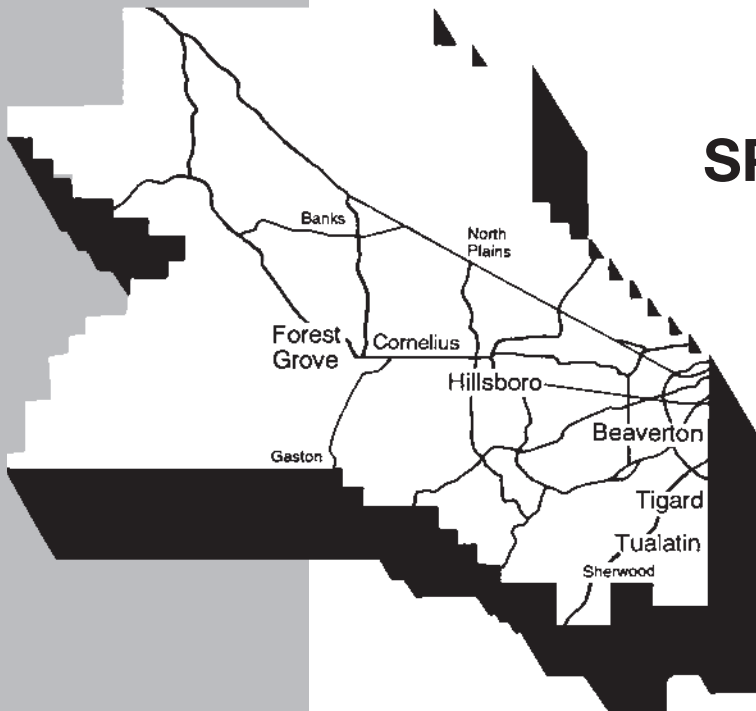
Elections Division  
3700 SW Murray Blvd.  
Beaverton, OR 97005

[www.co.washington.or.us](http://www.co.washington.or.us)

1

# Washington County

# voters' pamphlet



**VOTE-BY-MAIL  
SPECIAL DISTRICT  
ELECTION  
May 15, 2007**

**To be counted,  
voted ballots must  
be in our office  
by 8:00 pm on  
May 15, 2007**

## Washington County Board of County Commissioners

Tom Brian, Chair  
Dick Schouten, District 1  
Desari Strader, District 2  
Roy Rogers, District 3  
Andy Duyck, District 4

---

Dear Voter:

This pamphlet contains information for several districts and there may be candidates/measures included that are not on your ballot. If you have any questions, call 503-846-5800.

---

**Attention:**

Washington County Elections prints information as submitted. We do not correct spelling, punctuation, grammar, syntax, errors or inaccurate information.

---

# PORTLAND COMMUNITY COLLEGE

## Director, Zone 5



**David C. Squire**

**OCCUPATION:** President of the Entrepreneurs Foundation of the Northwest, non-profit providing programs to encourage early stage companies to be involved in the community. Managing Partner of the Tygh Valley Group, a product development consulting business.

**OCCUPATIONAL BACKGROUND:** Director Engineering, Planar Systems

Inc.; Vice President of Engineering, Lightware Inc.; President & CEO, InControl Solutions Inc.; Chief Operating Officer, Systematic Designs International Inc.; Vice President of Engineering, InFocus Systems Inc.; Chief Operating Officer, E-Machines Inc.; Business Unit General Manager, Tektronix Inc.; Board of Directors, InControl Solutions Inc.; Member of the planning team for the Digitization of Healthcare economic development cluster; Founding member of the Oregon Display System Consortium; former member of the Strategic Planning Team for Roosevelt High School.

**EDUCATIONAL BACKGROUND:** Ashland, Oregon, Senior High School Graduate; BS in Electrical Engineering, Oregon State University; MS in Electrical Engineering with a minor in Business, Oregon State University

**PRIOR GOVERNMENTAL EXPERIENCE:** Appointed to the Board of Directors, Worksystems Inc.- 1999-2005 (Chair of the Board 2001-2003, Chair of the Youth Council 1999-2001); Appointed to the Board of Directors, Oregon Quality Initiative-1992-1995; Appointed to the Board of Directors, Lintner Center for Advanced Education- 1991-1994

**Optional Information:**

I believe that a strong economy requires a skilled workforce and a workforce that can rapidly change to meet new opportunities. As the baby boomers retire we will also be facing a major shortage of skilled workers. This will create great economic opportunities for people who are able to upgrade their skills. PCC will play a vital role in training and retraining our globally competitive workforce. PCC is cost effective and has the ability to respond rapidly to changes. As a board member I will keep this vision as my guiding principle. PCC is a great resource for our region. I will work to make it even better.

*(This information furnished by David C. Squire)*

The above information has not been verified for accuracy by the county.

## Director, Zone 7



**Marilyn McGlasson**

**OCCUPATION:** Retired

**OCCUPATIONAL BACKGROUND:** Superintendent, 1998-2005, Banks School District; Personnel Director, 1996-1998, Hillsboro School District; Superintendent/Principal, 1985-1996, Farmington View School District; Principal, 1981-1985, Gaston School District; Teacher and Counselor, 1972-1981

**EDUCATIONAL BACKGROUND:** Superintendent Licensure Program, 1989, University of Oregon; M.S. Counseling, 1976, Portland State University; B.A. Education, 1972, Portland State University; H.S. Diploma, 1963, Banks High School

**PRIOR GOVERNMENTAL EXPERIENCE:** Board Member, 1985-present, Northwest Regional Educational Service District (formerly Washington County Education Service District); Volunteer Advocate, Washington County Elder Safe Program; Board Member, Banks Alumni Foundation; Budget Committee Member, Washington County Clean Water Services

**Optional Information:**

I would bring to the position the unique perspective and in-depth experience as a both a board member and administrator.

I would represent constituents in helping continue the valuable educational opportunities Portland Community College, in particular its Rock Creek Campus, provides to Washington County residents.

As a life-long resident of Washington County, I would consider it an honor to have the opportunity to represent you.

**Endorsements:**

Harold and Judy Britton  
Herb and Carol Drew  
Robert and Karen Duffy  
Tom and Gayle Hughes  
Thomas and Raeann Johnston  
Joe and Barbara Rodriguez  
Robert and Peggy Schlegel  
Mitch and Cherie Vandehey

*(This information furnished by Marilyn McGlasson)*

The above information has not been verified for accuracy by the county.

# TUALATIN HILLS PARK & RECREATION

## Director, Position 3



**Bob  
Scott**

**OCCUPATION:** Northwest Bank, Lake Oswego, Oregon; Commercial Account Officer & Senior Vice President, Northwest Bank – 2005-current

**OCCUPATIONAL BACKGROUND:** US Bank, Portland, Oregon, Various Positions 1989-2005; Meier & Frank, Portland, Oregon, Assistant Buyer 1987-89

**EDUCATIONAL BACKGROUND:**

Oregon State University, Corvallis, OR 1981-1983; Portland State University, Portland, OR 1979-1981; Hillsboro High School, Hillsboro, OR 1975-1979

**PRIOR GOVERNMENTAL EXPERIENCE:** Tualatin Hills Park & Recreation District – Board Member, appointed 6/2006; Tualatin Hills Park & Recreation District – Budget Committee 1992-current (Secretary '97-'99, Chair '99-2007); Unified Sewerage Agency (now Clean Water Services) – Advisory & Budget Committee's 1990-'92; West Union School District – Budget Committee 1995-96; Oregon State University, ASOSU – Directory of City Affairs 1982-83; City of Corvallis – Citizens Advisory Committees on Mass Transit and Bicycles 1982-83

Other community activities

-**Girl Scouts Columbia River Council** – Board of Directors  
-**Junior Achievement** – classroom teacher and fund drive team captain

- Coach THPRD Rec. Boys Basketball
- THPRD Softball, Men's & Coed Leagues
- Other interests include Golf, Camping, Kayaking, and Snowshoeing

**STATEMENT**

My family has utilized many of the valuable resources of the Tualatin Hills Park and Recreation District since we move here in 1989. From walking trails to swim lessons at one of the pools, from coaching youth basketball to tennis on the courts in our neighborhood, the Park District has offered my family an array of activities for each of us to enjoy. I personally want to see the Park District grow and continue to provide their top quality programs and services to those that use them today and for many generations to come.

*(This information furnished by Bob Scott)*

The above information has not been verified for accuracy by the county.

## Director, Position 4



**John  
Griffiths**

**OCCUPATION:** Business Development Manager, Intel Corporation

**OCCUPATIONAL BACKGROUND:** Republic Airlines; National Park Service

**EDUCATIONAL BACKGROUND:** UCLA, MBA, Management; UCSB, BA, History; Palisades High School, 12, Diploma, Science

**PRIOR GOVERNMENTAL EXPERIENCE:** Board of Directors, Tualatin Hills Park & Recreation District; Metro Greenspace Policy Advisory Committee (GPAC); City of Beaverton Budget Committee; THPRD Ad-Hoc Land Acquisition Committee; Metro Bond Measure Blue Ribbon Committee

I ask for your vote to continue to serve our community on the Tualatin Hills Park & Recreation District's Board of Directors. THPRD, one of the finest park and recreation providers within the United States, continues to experience unprecedented demand for its services despite very tight capital and operating budgets. I will continue to work to ensure that THPRD provides both the highest service level for the dollars expended and remains responsive to the needs of our growing, dynamic community.

My priorities are to:

- Ensure sound fiscal management, adequate funding, and efficient use of THPRD's limited resources.
- Increase funding partnership efforts with other public agencies and private organizations, as exemplified by THPRD's recent acquisition of the 30 acre "Mount Williams" natural area in Beaverton, in which over ten public and private organizations contributed towards its purchase.
- Establish community parks and recreation facilities in areas within the District that are deficient in them, such as the new sports field complex near PCC (Rock Creek) that will open to our community this year.
- Increase land acquisitions for trail corridors and greenspaces in order to support livability in our increasingly urbanized environment.

John is endorsed by:

- Dick Schouten, County Commissioner, Washington County
- Bruce Dalrymple, City Councilor, Beaverton
- David Bragdon, President, Metro Council

*(This information furnished by John Griffiths)*

The above information has not been verified for accuracy by the county.

# TUALATIN HILLS PARK & RECREATION

## Director, Position 5



### Joe Blowers

**OCCUPATION:** Science teacher, writer.

**OCCUPATIONAL BACKGROUND:** 21 years middle school science teacher.

**EDUCATIONAL BACKGROUND:** Portland State University, MS; Wayne State College, BS summa cum laude.

**PRIOR GOVERNMENTAL EXPERIENCE:** Board of Directors,

Tualatin Hills Park and Recreation District (2003 to present); THPRD Natural Resources Management Plan Advisory Committee; Washington County Bicycle Map Advisory Committee; Washington County Transportation Plan Update Advisory Committee.

Dear Park District Neighbor:

My family has lived in the District for 19 years. We appreciate the fine sports facilities, programs, trails, and parks. As a Director for the last four years, I have helped oversee a transition in THPRD leadership, an update of our 20 year master plan, the purchase of a wonderful natural area at Mt. Williams, and the addition of a major sports facility at PCC Rock Creek. I welcome the opportunity to continue to serve as your representative on the THPRD board.

My priorities are:

- Provide first-class sports and swimming facilities
- Responsibly manage District finances and facilities
- Create new parks and natural areas, especially in poorly served areas
- Expand outreach to under-served groups
- Complete regional trails and connect them to neighborhoods, schools, and parks
- Work with volunteers to restore wildlife habitat
- Support the successful Stuhr Senior Center while expanding district-wide recreational opportunities for people 55 and over
- Move the District toward greater environmental sustainability

Endorsements:

Bob Bothman, trails advocate  
 Brad Avakian, Oregon State Senator  
 Daniel D. Heagerty, businessman  
 Deanna Mueller-Crispin  
 Dick Schouten, Washington County Commissioner  
 Kathryn Harrington, Metro Councilor, District 4  
 Lori A. Hennings, Ecologist  
 Phil Murray, youth coach  
 Ray Hennings, cycling advocate  
 Walt Gorman

*(This information furnished by Joe Blowers)*

The above information has not been verified for accuracy by the county.

## Director, Position 5



### Greg Cody

**OCCUPATION:** Collection Manager, The Commercial Agency

**OCCUPATIONAL BACKGROUND:** Colonial Pacific Leasing, Receivables Management Inc., First Interstate Bank, SEIU Local 49 Member, Beaverton High School activities volunteer, Sunset Presbyterian Youth Ministries volunteer.

**EDUCATIONAL BACKGROUND:**

Linfield College, Portland and Seattle Community College.

**PRIOR GOVERNMENTAL EXPERIENCE:** St. Andrews Presbyterian Elder/Deacon, Beaverton Junior Baseball Commissioner and Board Member, Tualatin Hills Park & Recreation District Athletic Center Advisory Committee.

I ask for your support and vote.

For 26 years my family has enjoyed the incomparable quality of the THPRD parks, trails, nature preserves, swim and recreation centers, classes and organized recreation sports. THANK YOU THPRD. I am dedicated to "serving" by volunteering at Beaverton High School, being a youth sport's coach, youth league director and board member. I also serve on the Tualatin Hills Athletic Center Advisory Committee. It is my privilege to be your steward of the District's flagship facility.

Our community has grown significantly and changed. THPRD struggles to keep pace with this growth. THPRD is strained to develop its parks or create new centers, trails, nature reserves, and recreation/sports locations.

Our existing centers are at critical mass and struggle to provide a place for new requests. Most of the swim centers and half of the recreation centers are tired and old. They need refurbishing, expansion and remodeling to reduce higher costs due to age or growth in the District. Our Senior Center is at a level of maximum capacity and it is insulting to think this is adequate for our seniors.

Change cannot wait for tomorrow. The loss of THPRD quality is on the horizon. The needs are here now.

For these reasons and more I am seeking your vote. The Board needs at least one voice of five who advocates for the future.

This election is not about which candidate has more experience, education or park district specific interest.. This is an election of who is committed to act for THPRD's future.

For information, email: [GregCody4THPRD@gmail.com](mailto:GregCody4THPRD@gmail.com)

*(This information furnished by Greg Cody)*

The above information has not been verified for accuracy by the county.

# TUALATIN VALLEY FIRE & RESCUE

## Director, Position 4



### Carol Gearin

**OCCUPATION:** Registered Nurse (retired)

**OCCUPATIONAL BACKGROUND:** ENT Associates NW, Blue Cross/Blue Shield of Oregon, St. Vincent Hospital, Emmanuel Hospital

**EDUCATIONAL BACKGROUND:** Jewish Hospital School of Nursing; City University, BS, Business Administration

**PRIOR GOVERNMENTAL EXPERIENCE:** Tualatin Valley Fire & Rescue Board of Directors (1995-present), Metro Policy Advisory Committee, Washington County Committee for Citizen Involvement, CPO #1, Washington County Land Use Ordinance Advisory Committee, Beaverton Mediation Program, Board of Directors Special Districts Association of Oregon, various small stakeholder committees

**Carol Gearin's nursing background is a great asset for TVF&R's Board of Directors.** TVF&R personnel responded to approximately 31,000 emergency calls in 2006 year – nearly 75% were medical. TVF&R has dramatically improved patient care over the last decade by providing advanced life-saving procedures as soon as they arrive on scene, rather than waiting until a patient is transported to the hospital. **TVF&R is recognized as a leader in emergency medical services and Carol Gearin is one of its greatest champions.**

**Carol Gearin's history of strong neighborhood involvement helps ensure that TVF&R stays connected to the communities it serves.** In her role as a community advocate, Carol has always pressed local governments to respect and involve the residents of her community. At TVF&R, she is a strong voice for firefighters engaging with the community they serve. **One of the reasons TVF&R enjoys strong public support is because Carol insists that the public is never taken for granted.**

**As a taxpayer and Board member, Carol Gearin has consistently supported policies that maximize the efficiency of TVF&R operations.** Whether deploying "peak activity" units to busy areas, or providing services for a fee to other local governments, such as fire engine maintenance, Carol supports business practices that keep TVF&R's costs reasonable and its service excellent. **Carol will apply the same fiscal responsibility to ensuring that TVF&R's \$77.5 million bond is spent consistent with promises made to the voters.**

**Carol Gearin: Experience, Knowledge and a Passion for our Safety.**

*(This information furnished by Carol Gearin)*

The above information has not been verified for accuracy by the county.

## Director, Position 4



### Sandra Jabs

**OCCUPATION:** Victim's Advocate for Clackamas County; Investment Property Owner/Manager

**OCCUPATIONAL BACKGROUND:** Retired Lake Oswego Elementary School Teacher; Gymnastics Club Owner/Director

**EDUCATIONAL BACKGROUND:** Oregon State University BA in Education; Continued Graduate Work

**PRIOR GOVERNMENTAL EXPERIENCE:** None

Tualatin Valley Fire and Rescue is a highly respected organization that provides an excellent service to the tax payers. I am running to ensure that a high level of service is continued and to support the professional men and women that protect our property and families.

I feel it is important to be involved in the community. I strongly believe that in order for Democracy to work, individuals need to support their government and community by volunteering their time. I am committed to being an informed Director to help strengthen Tualatin Valley Fire and Rescue.

I am endorsed by Tualatin Valley Fire Fighters Local 1660 and the Oregon State Fire Fighters Council.

*(This information furnished by Sandra Jabs)*

The above information has not been verified for accuracy by the county.

# TUALATIN VALLEY FIRE & RESCUE

Director, Position 5



## Brian Clopton

**OCCUPATION:** Contractor.

**OCCUPATIONAL BACKGROUND:**  
Owner/Operations Manager, Brian Clopton Excavating, Inc.

**EDUCATIONAL BACKGROUND:**  
No formal college education.

**PRIOR GOVERNMENTAL EXPERIENCE:**  
Board of Directors for Tualatin Valley Fire and Rescue (1998-2007).

**Through eight years of service on the Board of Directors for Tualatin Valley Fire and Rescue (TVF&R),** Brian Clopton has championed smart financial management, excellent customer service, and “small town” connections between fire stations and their communities. Looking forward, his experience in the construction industry will provide the Board of Directors with practical expertise as it fulfills commitments made to voters to modernize TVF&R’s fire stations and apparatus.

**As a successful local business owner,** Brian Clopton brings a “no excuses” focus on service and financial management to his role on the Board of Directors. He built a successful company by investing with a long-term view, encouraging commitment and pride from employees, and consistently exceeding the expectations of his customers. He strongly supports a similar focus at TVF&R.

**As a life-long resident of the fire district,** Brian Clopton has seen housing and employment growth increase demand for critical public services. He also watched small city and rural fire departments work together to create TVF&R, a regional fire district. While an advocate for the financial and operational efficiencies of a regional provider, Brian’s deep local roots cause him to strongly support maintaining “small-town” connections between fire stations and the communities they serve.

**With thirty year’s of experience in the construction industry,** Brian Clopton is uniquely qualified to work with the Board of Directors to ensure TVF&R meets the commitments of the \$77.5 million bond voters approved in November 2006. Brian’s first-hand experience with project management, financing, and contractor relations will be invaluable as the Board helps ensure that 15 projects are completed within budget and in a timely manner.

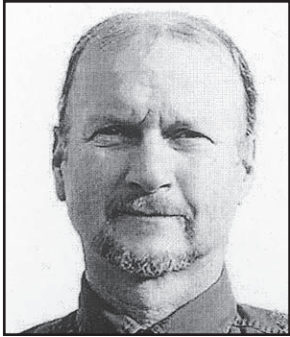
**Keep Brian Clopton on the TVF&R Board of Directors. He has the skills to help shape the District’s future and the experience to retain important traditions from its past.**

*(This information furnished by Brian Clopton)*

The above information has not been verified for accuracy by the county.

## FOREST GROVE FIRE

### Director, Position 4



**Kevin  
Van Dyke**

**OCCUPATION:** Maintenance, Merix Corporation

**OCCUPATIONAL BACKGROUND:** Self employed, commercial agricultural application business; Manager, Custom Field Services, Ag-Chem Inc.

**EDUCATIONAL BACKGROUND:** Graduated, Jesuit High School; Pre-Professional Program, Oregon College of

Education; continuing educational seminars in leadership, risk management, public finance, and Government Standards and Practices.

**PRIOR GOVERNMENTAL EXPERIENCE:** Director, Forest Grove Rural Fire Protection District; Director, Oregon Fire District Director's Association; Member, Joint Fire Legislative Committee; Member, Special Districts of Oregon Legislative Committee; Budget Officer, Forest Grove Rural Fire Protection District; Participant, Oregon Governor's Fire Service Summit; Chairman, Forest Grove School District Budget Committee; Member, Oregon Department of Fish and Wildlife Access and Habitat Board Advisory Committee

**OPTIONAL INFORMATION:**

District tax payers deserve prompt fire and emergency response times. I will use my experience and contacts on both local and statewide levels to keep the District's needs in the forefront. The partnership between the City of Forest Grove and the Rural District has served both entities well in the past and may continue to do so in the future. I will always, however, place priority on rural patrons' needs when looking at future potential and options. I believe vibrant volunteer and cadet programs are vital to present and future operations. I will continue to hold the City accountable to our Agreement for Joint Fire Protection.

I am honored to have received your confidence in the past, and if re-elected will continue to earn it at every turn.

*(This information furnished by Kevin Van Dyke)*

The above information has not been verified for accuracy by the county.

## WASHINGTON COUNTY FIRE 2

### Director, Position 5



**Ryan  
Stadelman**

**OCCUPATION:** Self Employed Farmer

**OCCUPATIONAL BACKGROUND:** 1999-2000 – Washington County Fire Dist. #2 Station 17 Volunteer Assoc. President; Summer 1994 – Washington County Fire Dist. #2 Paid Summer Fire Fighter; 1992-2000 – Washington County Fire Dist. #2 Volunteer Fire Fighter

**EDUCATIONAL BACKGROUND:** Glencoe High School – Graduated; Portland Community College; Chemeketa Community College

**PRIOR GOVERNMENTAL EXPERIENCE:** None

**FAMILY**

Wife – Amy  
Two Children

**ENDORSEMENTS**

Scott Duyck – Duyck's Garage  
Jeff Duyck – Duyck's Garage  
Bryan Landaker  
Chad Mueller  
Charles L. Wilson

*(This information furnished by Ryan Stadelman)*

The above information has not been verified for accuracy by the county.

# TUALATIN VALLEY WATER

## Commissioner, Position 1



**Marie Haynes**

**OCCUPATION:** Teacher

**OCCUPATIONAL BACKGROUND:**

Taught elementary and high schools in Washington County and Army Dependent School in Hanau Germany as well as Seattle Washington

**EDUCATIONAL BACKGROUND:**

University of Portland with a B.A. degree in Music Education. Post Graduate work

in Elementary Education at Portland State University

**PRIOR GOVERNMENTAL EXPERIENCE:** None

**Marie Haynes**  
safewater-oregon.org  
503 645-5161

Endorsed by Citizens for Safe Water – Oregon and Citizens Interested In Bull Run Inc. (CIIBRI).

The well-being of children and their families is one of the reasons why I care about the drinking water that will be allocated for future use in the Tualatin Valley Water District.

We currently are under a 10-year contract with the City of Portland in large part due to the efforts of past Commissioner Gordon Martin, whose position I would like to fill. His legacy of protecting people from exposure to the questionable Willamette River as a source of water for the district is one I greatly admire.

Between now and 2011 the district is looking seriously at the Willamette as the best option for replacing Portland’s pristine Bull Run as our future water source. The district is claiming that filtered Willamette water is as good as or better than Bull Run water.

I am simply not convinced that filtered Willamette water is safe for our children or adults to drink! There are nowhere near enough EPA sanctioned tests designed to test for all the medical residues, pesticides and toxic chemicals known to be in use in or near the river. We need to know more before we spend \$400 million plus on an option like that.

We have other options like the Bull Run watershed which is one of the few remaining pristine water sheds in the world. Fully expandable...it could meet our needs well into the future. Or by raising Scoggins dam 40 feet in combination with Portland water could be enough to meet demands to 2040.

Safe water is my priority.

*(This information furnished by Marie Haynes)*

The above information has not been verified for accuracy by the county.

## Commissioner, Position 1



**Stephen Pearson**

**OCCUPATION:** Senior Financial Analyst – Capital Budgeting, City of Portland Parks & Recreation Bureau

**OCCUPATIONAL BACKGROUND:** 10 years Multnomah County budget and analytical positions; 1 year Oregon Health Division budget and compliance; 15 years Pacific Power costing, budgeting, and project management.

**EDUCATIONAL BACKGROUND:** Occidental College, Bachelor of Arts – Mathematics; University of Nevada, Las Vegas Accounting Equivalence.

**PRIOR GOVERNMENTAL EXPERIENCE:** Commissioner, Tualatin Valley Water District (TVWD); Budget committee member, TVWD; Member, Local School Committee – Cedar Park Middle School; over 12 years of full time government employment

I am honored to serve currently as a Commissioner of TVWD and request your support in the upcoming election.

My goal is to help TVWD provide high quality water to you at a reasonable price. TVWD must plan far into the future to ensure that we will be able to efficiently face the challenges which come with growth. We must also maximize the reliability of our water system and continue to provide excellent customer service. I bring expertise in capital budgeting, forecasting, and business analysis to the position. I will make sure that we target the best and safest long term water supply projects that meet our needs and reduce our risks.

I am a strong advocate for conservation and believe that TVWD must continue to encourage conservation of water resources. Water conservation should become as ingrained in our customer’s habits as recycling. I am proud of the work TVWD has done so far. While on TVWD’s Budget Committee, I was a strong supporter of the conservation measures proposed by the TVWD staff and board.

I support and will encourage TVWD’s integrating principles of sustainability into its operation and planning. This means being sensitive to the environment and the social impact of decisions, not just the economic and operational consequences.

TVWD is an award-winning organization with an excellent staff. I believe I can assist in the continuation of its tradition of quality service and I ask for your vote.

Thank you  
Steve Pearson

*(This information furnished by Stephen Pearson)*

The above information has not been verified for accuracy by the county.



# TUALATIN VALLEY WATER

## Commissioner, Position 4



### Richard P. Burke

**OCCUPATION:** Information Consultant, 2000 - present.

**OCCUPATIONAL BACKGROUND:** Computer Network Consultant, 1989-2001.

**EDUCATIONAL BACKGROUND:** B.S., Social Science, PSU, 1989.

**PRIOR GOVERNMENTAL EXPERIENCE:**

Elected TVWD Commissioner, 1999-present, Current Board Vice President. Chair, Bull Run Regional Drinking Water Agency, 2002-present. Legislative Aide, Oregon Senate, 2001. Elected Local School Committee, Beaverton School District, 1994, 1997.

**RE-ELECT RICHARD P. BURKE  
"PROVEN PERFORMANCE"**

• **Securing Bull Run Water**

During a previous term I chaired a group of local leaders exploring shared ownership of the Bull Run watershed. In my current term, I took a central role in negotiating our current 10 year contract for Bull Run water that will save us hundreds of millions of dollars. We are always looking for new sources of safe water, including improved methods of conservation.

• **Ensuring Safe, Affordable and Abundant Water**

In 1999, I opposed building a water treatment plant on the Willamette river. I repeatedly demanded public hearings and mailings to involve the public in that decision. I am still committed to public participation in any process that would impact our water supply. TVWD now has a variety of options for our future, and I will continue working to assure that your water supply remains safe, affordable, and abundant.

• **Reducing Your Taxes**

During my first term, I opposed new taxes and supported budgets taking TVWD off property tax bills by 2005. We succeeded, and TVWD is now funded entirely by the sale of water. We've worked hard to keep water affordable while improving water quality, replacing worn out pipes, and making our system more secure. If re-elected, I plan to continue these policies.

**It has been an honor and privilege to serve as a TVWD commissioner.** If re-elected, I will keep working to secure clean, safe and affordable water for ourselves and the generations to follow. Thank you.

<http://www.rpb.com/tvwd>  
rpb.tvwd@rpb.com

*(This information furnished by Richard P. Burke)*

The above information has not been verified for accuracy by the county.

## Commissioner, Position 4

No Photo  
Submitted

### Edward J. Cleary

**OCCUPATION:** Engineer (retired)

**OCCUPATIONAL BACKGROUND:** Engineer, Tektronix Inc.

**EDUCATIONAL BACKGROUND:** MS Engineering UCLA; BS Engineering, Univ. of Kansas; BS Physics, Rockhurst College

**PRIOR GOVERNMENTAL EXPERIENCE:** None

**Ed Cleary**  
safewater-oregon.org  
503 642-2103

Endorsed by Citizens for Safe Water – Oregon and Citizens Interested In Bull Run Inc. (CIIBRI).

In spite of widespread opposition to using the Willamette River water as a source, the TVWD apparently continues its campaign to do exactly that.

After months of contentious negotiations with the City of Portland, the District finally signed a 10-year rather than a cheaper 20-year contract for Bull Run water, apparently just long enough to plan and construct the Willamette system at a potential cost in excess of \$400 million dollars!

We have other options like the 102-square-mile Bull Run watershed which is one of the few remaining pristine water sheds in the world. Fully expandable... it could meet our needs well into the future.

Another choice is expansion of the Joint Water Commission's Trask/Tualatin system – which already provides half the District's supply. By raising Scoggins dam 40 feet in combination with Portland water could be enough to meet demands to 2040. The water quality is no match for Bull Run water, but is substantially better than the Willamette.

My goal will be to insure that all information used to make future water source decision is accurately sourced and verified and that the decision process be completely transparent to the public.

I will insure that all possible sources are given equal consideration and that any decision to use the Willamette must be approved by a vote of the customers prior to making a commitment.

Safety and quality should be our first priority!

*(This information furnished by Edward J. Cleary)*

The above information has not been verified for accuracy by the county.

# TUALATIN VALLEY WATER

## Commissioner, Position 5



### Jim Doane

**OCCUPATION:** Retired Civil Engineer,  
Community Volunteer, Part-time  
Engineering Consultant

**OCCUPATIONAL BACKGROUND:** None

**EDUCATIONAL BACKGROUND:**  
BS Engineering, UCLA; MS Civil  
Engineering, California State University at  
Long Beach

**PRIOR GOVERNMENTAL EXPERIENCE:** Washington County Educational Service District (1985-1994) Oregon Seismic Safety Policy Advisory Commission

Jim has been a Board Member of Tualatin Valley Water District (TVWD) since 1998.

Jim and his family have enjoyed the benefits of living in the TVWD for over 30 years. In 2002, Jim retired from an engineering career in water resources. Among his responsibilities was the supervision of award winning residential and commercial water conservation programs and protecting water systems against disruption by natural and human caused events. Jim was "Oregon's Government Engineer of the Year" for 2001.

Jim is the volunteer director of Camp Adams, a nonprofit overnight camp.

Jim knows that over the next four years TVWD will face critical decisions such as:

- **Water Quality**---It is necessary for TVWD to review the existing water quality standards set by the EPA and the Oregon Health Division to see if they provide sufficient protection, especially for young children. If they do not, then TVWD must set more stringent standards.
- **Water Quantity**---Intelligent water conservation is the key to establishing a secure cost-effective future supply for the district's citizen. In addition to an aggressive conservation program, the District has done an excellent job in signing the ten year Bull Run contract and expanding its supply from Hagg Lake. The District's study of the impact of climate change shows the need for continuing evaluation of expanding existing sources and searching for additional opportunities.
- **Water System Security**---As a past member of the national Critical Infrastructure Protection Advisory Committee for Water and Wastewater, Jim knows what should be protected and how to provide that protection efficiently.
- **Affordable Water**---Jim will continue to work for affordable water rates.

**For all of these reasons, reelect Jim Doane to the TVWD Board.**

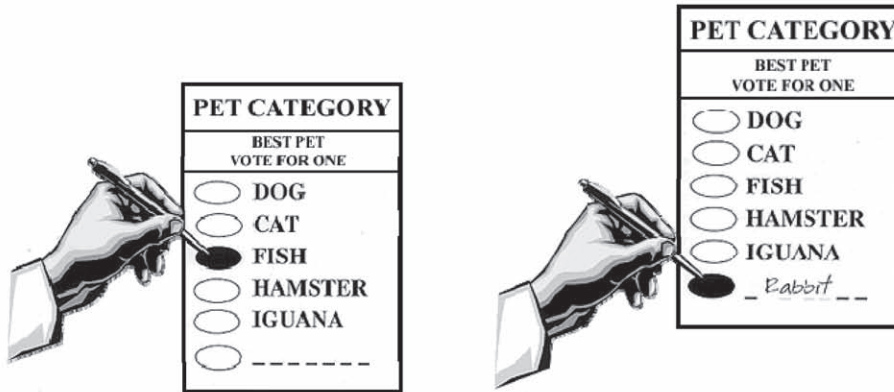
*(This information furnished by Jim Doane)*

The above information has not been verified for accuracy by the county.

# WASHINGTON COUNTY

## How To Vote Your Ballot:

1. To vote you must completely fill in the oval ( ● ) with a black or blue pen or a standard pencil.
2. To Write in a name completely fill in the oval ( ● ) to the left of the dotted line ( \_\_\_\_\_ ) and write in the name on the dotted line.
3. The ballot may have contests printed on front and back. Remember to vote both sides.
4. If you make a mistake, or your ballot is damaged, or in need of assistance, you may contact the Elections Office for a new one.



## Cómo votar su Boleta Electoral:

1. Para votar usted deberá llenar completamente el óvalo ( ● ) que está a la izquierda de su decisión. Use una pluma de tinta o **azúl**, o un **lápiz**.
2. Para someter un nombre, llene completamente el óvalo ( ● ) que está a la izquierda de la línea vacía. ( \_\_\_\_\_ ) Use una pluma de tinta o **azúl**, o un **lápiz** para escribir un nombre.
3. La Boleta Electoral tal vez tenga información en los dos lados (frente y posterior). **Recuerde**, vote ambos lados.
4. Si hace un error, o su boleta es dañada, o necesita ayuda, puede llamar a la oficina de Elecciones para solicitar una nueva.



# ballot dropsites

**Ballots must be received by 8pm on Election Day.**

---

**24-hour dropsites**

**Public Services Building**

Rear Entrance  
155 N 1st Ave  
(1st and Main)  
Hillsboro

**County Office**

Front Lobby  
3700 SW Murray Blvd  
(Murray and Millikan)  
Beaverton

**Banks Library**

111 Market St

**Forest Grove Library**

2102 Pacific Ave

**King City - City Hall**

15300 SW 116th Ave

**North Plains City Hall**

31360 NW Commercial

**Sherwood City Hall**

22560 SW Pine St

**Tigard City Hall**

13125 SW Hall Blvd

**Tualatin City Office**

**Council Building**

18880 SW Martinazzi Ave

---

**indoor dropboxes** *(call to confirm hours)*

**Beaverton Library**

12375 SW 5th St  
503 644 2197

**Cedar Mill Library**

12505 NW Cornell Rd  
503 644 0043

**Cornelius Library**

1355 N Barlow St  
503 357 4093

**Garden Home Library**

7475 SW Oleson Rd  
503 245 9932

**Hillsboro Library**

**Shute Park Library**

775 SE 10th Ave  
503 615 6500

~~**Hillsboro Library**~~

~~**Tanasbourne**~~

~~2453 NW 185th Ave  
503 615 6500~~

Temporarily Closed  
Due to Moving

**West Slope Library**

3678 SW 78th Ave  
503 292 6416

---

**Washington County Elections**

3700 SW Murray Blvd Suite 101  
Beaverton OR 97005  
503 846 5800  
[www.co.washington.or.us](http://www.co.washington.or.us)

