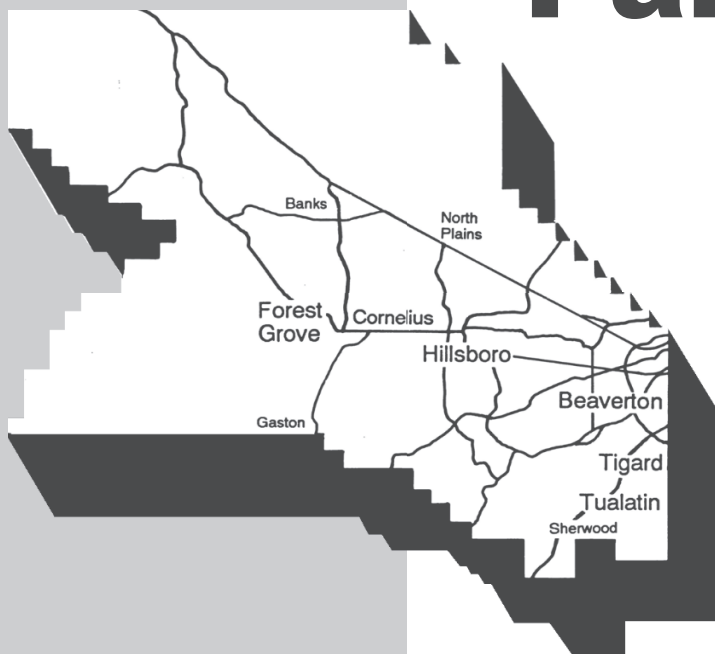




Elections Division
2925 NE Alcock Dr #170
Hillsboro, OR 97124-7523

www.washcovotes.org

Washington County Voters' Pamphlet



**SPECIAL
ELECTION
NOVEMBER 4, 2025**

Washington County Board of County Commissioners

Kathryn Harrington, Chair
Nafisa Fai, District 1
Pam Treece, District 2
Jason Snider, District 3
Jerry Willey, District 4

ATTENTION

This is your county voters' pamphlet. Washington County Elections prints information as submitted. We do not correct spelling, punctuation, grammar, syntax, errors, or inaccurate information. This pamphlet contains information for several districts and there may be candidates/measures that are not included on your ballot. If you have any questions, call 503-846-5800.



WASHINGTON COUNTY OREGON

Dear Voters,

Selected portions of this county voters' pamphlet are available in Arabic, Simplified and Traditional Chinese, Farsi, Japanese, Khmer, Korean, Russian, Spanish, Tagalog and Vietnamese. These translations can be found online at [**oregonvotes.gov/WashingtonVP**](https://oregonvotes.gov/WashingtonVP)

يمكن العثور على هذه الترجمات عبر الإنترنت على. تتوفر أجزاء مختارة من كتيب الناخبين في هذه المقاطعة باللغة العربية
[**oregonvotes.gov/WashingtonVP**](https://oregonvotes.gov/WashingtonVP)

本县选民手册的部分内容提供简体中文版本。可以访[**oregonvotes.gov/WashingtonVP**](https://oregonvotes.gov/WashingtonVP)获取译本。

本縣選民手冊的部分內容提供繁體中文版本。可造訪 [**oregonvotes.gov/WashingtonVP**](https://oregonvotes.gov/WashingtonVP) 獲取該譯本。

بخش‌های منتخبی از بروشور رأی‌دهندگان کانتی به زبان فارسی موجود است
این ترجمه‌ها را می‌توان به‌صورت آنلاین در وب سایت [**oregonvotes.gov/WashingtonVP**](https://oregonvotes.gov/WashingtonVP) یافت

この郡有権者向けパンフレットのの一部は日本語でもご利用いただけます。これらの翻訳は、
[**oregonvotes.gov/WashingtonVP**](https://oregonvotes.gov/WashingtonVP)でオンラインでご覧いただけます。

ផ្នែកជ្រុលបានជ្រើសរើសនៃព័ត៌មានប្រាប់អ្នកបោះឆ្នោតស្រុកនេះ គឺអាចរកបានជាភាសាខ្មែរ។ ការបកប្រែទាំងនេះអាចរកឃើញប្រើបណ្តាញនៅ [**oregonvotes.gov/WashingtonVP**](https://oregonvotes.gov/WashingtonVP)

카운티 유권자 팸플릿 내 선택된 부분은 한국어로 준비되어 있습니다. 번역은 온라인
[**oregonvotes.gov/WashingtonVP**](https://oregonvotes.gov/WashingtonVP)에서 찾아보실 수 있습니다.

Отдельные части брошюры избирателей этого округа доступны на русском языке. Эти переводы можно найти в Интернете по адресу [**oregonvotes.gov/WashingtonVP**](https://oregonvotes.gov/WashingtonVP)

Algunas secciones de este folleto para votantes del condado están disponibles en español. Estas traducciones están disponibles en línea en [**oregonvotes.gov/WashingtonVP**](https://oregonvotes.gov/WashingtonVP)

Mababasa sa wikang Tagalog ang piling mga bahagi ng pamphlet na ito para sa mga botante ng county.
Makikita online ang mga pagsasaling-wikang ito sa [**oregonvotes.gov/WashingtonVP**](https://oregonvotes.gov/WashingtonVP)

Các phần được chọn trong tập thông tin cử tri quận này có bản ngôn ngữ tiếng Việt. Bản dịch có thể xem trực tuyến tại [**oregonvotes.gov/WashingtonVP**](https://oregonvotes.gov/WashingtonVP)

Department of Assessment & Taxation • Elections Division

2925 NE Alcock Drive, Suite 170 • Hillsboro, OR 97124

phone: 503-846-5800 • fax: 503-846-5810

website: [**www.washcovotes.org**](http://www.washcovotes.org) • email: [**Elections@washingtoncountyor.gov**](mailto:Elections@washingtoncountyor.gov)

TABLE OF CONTENTS – NOVEMBER 4, 2025 ELECTION

	Page
Translation Letter	----- WC-2
Table of Contents	----- WC-3

MEASURES

3-628 Lake Oswego School District	----- WC-4
3-629 West-Linn Wilsonville School District	----- WC-5
26-260 City of Portland	----- WC-6
34-345 Washington County	----- WC-8
34-346 Washington County	----- WC-15

LIST OF DROPSITES	----- WC-23
--------------------------	-------------

Lake Oswego School District No. 7J

Measure No. 3-628

Ballot Title

Bonds to improve safety, security; update classrooms, capacity; modernize facilities

Question: Shall District maintain current estimated bond tax rate, issue bonds to improve safety, repair schools; expand classrooms, career/technical education?

If the bonds are approved, they will be payable from taxes on property or property ownership that are not subject to the limits of sections 11 and 11b, Article XI of the Oregon Constitution.

Summary: This measure is expected to maintain current estimated Lake Oswego School District bond levy rate and authorizes \$245 million in principal amount of bonds to finance capital costs, including:

Safe, Secure Schools:

Update fire alarm systems
Standardize secure classroom doors
Install hardened glass
Expand security camera coverage
Upgrade emergency communication systems
Improve seismic structural resilience

Replace Two Oldest Schools

Replace Forest Hills and Lake Grove Elementary Schools. Built in 1940s, plumbing is embedded in concrete, and foundations cannot support seismic strengthening.

Improve Aging Facilities

Upgrade roofs, windows, HVAC, plumbing, electrical systems
Update recreation facilities
Acquire furnishings, equipment, technology

Modern Learning Environments

Expand Science Technology Education Math (STEM), Career and Technical Education (CTE) spaces at both high schools
Purchase property, remodel for Community Transition Program
Add classrooms to meet demand at Palisades

Requires community oversight, regular audits

Bonds may be issued in multiple series, each maturing within 26 years. Estimated not to increase bond rate above \$2.90 per \$1,000 assessed value. Actual levy rates may differ due to interest rates and property value changes.

Explanatory Statement

Lake Oswego School District (LOSD) serves approximately 6,800 students across 11 schools and is consistently recognized among Oregon's top-performing K-12 education systems, according to Niche.

COMMUNITY INVESTMENT IN SCHOOLS

This bond measure represents the final phase of a three-part initiative to build safe, modern, and resilient schools in Lake Oswego.

Projected to Maintain Current Tax Rate

If approved, the \$245 million bond is projected to maintain LOSD's current estimated bond tax rate of \$2.90 per \$1,000 of assessed property value. No increase in the bond tax rate is anticipated.

ADDRESS CURRENT NEEDS

- **Safety and Emergency Preparedness**
Several schools would receive safety improvements, including new fire alarm systems, secure classroom doors, expanded security camera coverage, emergency communication upgrades, and hardened glass window installations.

- **Aging Infrastructure**

Many school buildings are several decades old and rely on outdated systems. Roofs, windows, HVAC, plumbing, and electrical systems would be repaired or replaced to support healthy, safe, and efficient operations.

- **Oldest Schools Replacements**

Forest Hills and Lake Grove Elementary Schools, built in the 1940s, have obsolete systems and deteriorating infrastructure, including plumbing embedded in concrete and foundations that cannot be seismically upgraded. Replacements would be less costly than major repairs.

- **Learning Space Capacity**

Lakeridge and Lake Oswego High Schools would receive expanded and upgraded classrooms for Science, Technology, Engineering, and Math (STEM) and Career and Technical Education (CTE). Palisades Elementary would receive additional classrooms to support growing enrollment. Community Transition Program, which supports students with developmental delays preparing for independent living, would receive a dedicated facility.

2025 BOND REQUEST

Developed in collaboration with community representatives, this bond proposal is designed to address current needs while maintaining LOSD's current estimated bond tax rate.

If passed, the bond would fund:

Health, Safety, and Security Improvements

- Update fire alarm systems
- Install secure classroom doors and hardened glass windows
- Expand security camera coverage
- Upgrade emergency communication systems
- Add seismic reinforcements to Level 4 "Immediate Occupancy" standards

Facility Preservation and Upgrades

- Improve roof, window, HVAC, plumbing, and electrical systems
- Restore physical activity facilities
- Replace deficient furnishings, equipment, and technology

Oldest Elementary Schools Replacements

- Rebuild Forest Hills and Lake Grove Elementary Schools at current sites

Learning Space Expansions

- Add STEM/ CTE classrooms at both high schools
- Purchase and remodel a facility for Community Transition Program
- Add classrooms at Palisades Elementary

OVERSIGHT AND ACCOUNTABILITY

Bond funds may only be used for voter-approved projects. Oversight includes:

- A citizen-led Bond Accountability Committee
- Regular audits and quarterly expenditure reports
- Monitoring by the Lake Oswego School Board
- Compliance with bond program objectives and state law

COSTS

Bonds may be issued in series, each maturing within 26 years. While the LOSD's total bond tax rate is estimated to remain at \$2.90 per \$1,000 of assessed value, actual rates may vary based on interest rates and assessed property values.

Learn more at losdschools.org/bond2025.

Submitted by:
Dr. Jennifer Schiele
Superintendent

No Arguments in Favor or Opposition of this measure were filed.

West Linn-Wilsonville School District No. 3J

Measure No. 3-629

Ballot Title

Bonds to increase safety, security; update facilities, technology; repair facilities

Question: Shall District increase safety; repair, update school facilities; issue \$190 million general obligation bonds; estimated to maintain current tax rate? If the bonds are approved, they will be payable from taxes on property or property ownership that are not subject to the limits of sections 11 and 11b, Article XI of the Oregon Constitution.

Summary: It is estimated that this measure would not increase current tax rates. West Linn-Wilsonville School District No. 3Jt has been awarded \$6,126,000 in State grants only if these bonds are approved.

If approved, this measure would finance capital costs, including:

Facilities Stewardship

Repairs, replacements, improvements at all schools
Improve roofing, fire safety, mechanical, electrical, parking, sidewalks, landscaping
Acquire furniture, equipment
Capital improvement planning

Learning with Technology

Upgrade technology equipment, infrastructure
Update curriculum

Science, Technology, Engineering, Art, Math (STEAM); Career, Technical Education (CTE); Career Pathways

Improve facilities, equipment
Robotics center

Safe, Welcoming Schools

Improve communication systems, intrusion limiting glass, fencing, access control, security equipment

Accessible Facilities

Improve accessibility at schools, outdoor spaces

Athletics, Wellness

Improve athletic, playground, field, lighting, turf, track, restroom, stadium facilities

Sustainable, Resilient Facilities

Improve energy efficiency
Standby generators
Lighting upgrades

Citizen oversight committee and regular independent audit of bond expenditures required.

Bonds may be issued in multiple series; each maturing within 31 years from issuance. Actual tax rates may differ due to changes in interest rates and property assessed value.

How were projects selected for the measure?

The District's Long Range Planning Committee, led by citizen volunteers, updated the district's Long Range Facilities Plan and analyzed school facility conditions. The committee made recommendations based on present and future facility needs, focusing on projects that were determined mission critical or mission important. Guided by the committee's recommendations, and feedback from a cross-representation of community members through task force groups and a community Bond Summit, West Linn-Wilsonville Board of Directors propose that bond funds, if approved, be used for:

- **Facilities Stewardship:** Make repairs, replacements, and improvements at all schools. Improve siding, windows, roofing, fire safety, mechanical, electrical, plumbing, flooring, parking, sidewalks, and landscaping. Acquire furniture and equipment. Conduct capital improvement planning.
- **Safe and Welcoming Schools:** Improve communication systems, intrusion limiting glass, fencing, access control, and security equipment.
- **Learning with Technology:** Upgrade technology equipment and infrastructure districtwide and update curriculum.
- **Increase Opportunities for STEAM and CTE:** Improve facilities and equipment related to STEAM (science, technology, engineering, art, math), CTE (career and technical education), and career pathways. Create robotics center accessible to all district students.
- **Athletics and Wellness:** Improve athletic, playground, field, lighting, turf, track, restroom, and stadium facilities.
- **Sustainable and Resilient Facilities:** Improve energy efficiency, add standby generators, and make lighting upgrades.
- **Accessible Facilities:** Improve accessibility at schools and outdoor spaces.

Why was this measure referred?

The Long Range Facilities Plan outlined present and future facility needs. Members of the West Linn-Wilsonville School Board, Long Range Planning Committee, Long Range Plan Task Force groups, and Bond Summit participants prioritized repairing and maintaining existing facilities in this bond measure. This bond would make repairs, replacements, and improvements at all district schools. All projects included in this measure are categorized as mission critical or mission important in the District's Long Range Facilities Plan.

How much would the measure cost taxpayers?

Due to the retirement of a portion of existing bonds, this bond measure is not expected to increase the current district's total bond tax rate. This \$190 million bond is projected to have an estimated average rate of \$1.06 per \$1,000 of assessed value annually over the bond term. The estimated average cost of this bond is approximately \$424 per year on a home with a \$400,000 assessed taxable value. Actual rates may vary based upon interest rates incurred and changes to assessed value.

Submitted by:
Dr. Kathy Ludwig
Superintendent

Explanatory Statement

What would the proposed measure include?

West Linn-Wilsonville School District has placed a capital bond on the 2025 ballot. With no expected increase to the current tax rate, the bond would provide funds to: make safety and security upgrades; make repairs, replacements, and improvements at all schools; upgrade technology equipment, infrastructure, and update curriculum; create a robotics center accessible to the entire district; classroom improvements; improve athletic, playground, field, lighting, turf, track, restroom, and stadium facilities; improve energy efficiency.

If bond measure is approved, district will receive an additional \$6.126 million in matching state grant. The district would only receive the grant if the bond measure passes.

No Arguments in Favor or Opposition of this measure were filed.

City of Portland

Measure No. 26-260

Ballot Title

Maintain safe parks, nature, affordable recreation through 5-year levy.

Question: Should Portland maintain parks, recreation, fund repairs; five-year levy \$1.40 per \$1,000 assessed value beginning 2026-2027? This measure may cause property taxes to increase more than three percent.

Summary: In 2020, City of Portland voters approved a five-year levy to support parks and recreation operations that expires in 2025. If a new levy is not approved, the Parks operating budget would be reduced by approximately half, resulting in fewer programs and services.

A new five-year levy would maintain operations, fund capital projects:

ENSURE NEIGHBORHOOD PARKS MAINTENANCE AND CLEANLINESS

- Daily restroom cleaning, trash pickup
- Routine maintenance, minor repairs
- Repair or renovate facilities like playgrounds, restrooms, pools
- Park ranger safety patrols, incident responses

PROTECT NATURE IN A CHANGING CLIMATE

- Plant, maintain trees
- Preserve natural areas, trails, water quality, wildlife habitat
- Clear brush, maintain emergency access routes to reduce wildfire risk

PRESERVE PROGRAM ACCESS

- Continue free, discounted recreation programs for families experiencing poverty
- Preserve classes, community center hours, arts and cultural centers, parks, pools

Community oversight committee would review levy expenditures, provide annual reports. Independent audit required.

A median homeowner would pay about \$310 per year, or \$26 per month - a \$11 monthly increase.

Levy would raise approximately \$86,268,997 in 2026–2027, \$88,719,730 in 2027–2028, \$91,411,705 in 2028–2029, \$93,588,449 in 2029–2030, and \$96,068,483 in 2030–2031, for a total of \$456,057,364.

Explanatory Statement

This Measure would allow the City of Portland to levy \$1.40 per \$1,000 assessed value for five years to operate the parks and recreation system, replacing and increasing the rate of the current \$0.80 per \$1,000 assessed value levy that expires after fiscal year 2025-2026. Within the \$1.40 per \$1,000 assessed value levy, \$1.37 will be for park and recreation operations and \$0.03 will be for capital projects. Services and programs are planned to include, but are not limited to:

- Fix park playgrounds, pools and splash pads, restrooms, and other facilities in need of critical repairs.

The levy will continue offering:

- Daily restroom cleaning and trash pick-up at every developed park.
- Summer events and Free Lunch & Play programs, Free for All free movies, concerts.
- Inspection of every developed park tree, performing proactive maintenance on park trees to prioritize public safety.

- Additional ongoing daily work in parks, natural areas, trails, and community centers, including:

Safety

- Supporting safety with hazard checks in parks and natural areas, Park Ranger patrols, incident response, and nighttime lock-up of facilities.
- Performing wildfire prevention through brush clearing, tree pruning, removing invasive species and other hazards, and maintaining emergency access routes.

Regular Maintenance

- Inspecting park assets like playgrounds, pathways, trails, bridges, and community centers.
- Repairing park assets and performing routine maintenance like painting, carpentry, electrical, mechanical, and plumbing work.
- Improving safety, accessibility, and year-round usability of park paths and trails through repairs and hazards removal.

Nature

- Supporting our environment through planting native species, improving wildlife habitat, stabilizing slopes, and taking care of assets like signs, gates, fences, culverts, bridges.
- Planting new trees in low-canopy areas.

Affordable Programs

- Providing free and low-cost options so every Portlander, regardless of income, can participate.
- Keeping community centers and pools open with diverse programming and classes.

Investment in partnerships to deliver services, programs, and community initiatives, including through access to PP&R facilities for partner-provided programming. Unlock the power of volunteers and collaboration with local and regional groups to improve safety, sustainability, connectivity, and long-term stewardship in Portland's parks and recreation system.

A community oversight committee will be appointed to review levy expenditures, data, and minimum performance metrics and report annually to City Council as part of the budget process. The Parks Bureau will provide for a performance audit to ensure that services funded by the levy would continue to be consistent with voter intent.

The City estimates that the levy tax rate of \$1.40/\$1,000 assessed value would cost the median residential property approximately \$11 per month over the current levy (or \$26 per month), raising approximately \$86 million in the first year with an estimated average of \$91 million raised annually over five years. If a new levy is not approved, the Parks operating budget would be reduced by approximately half, resulting in fewer programs and services.

Submitted by:

Elana Pirtle-Guiney, Portland City Council President
City of Portland

No Arguments in Opposition of this measure were filed.

City of Portland

Measure No. 26-260 Arguments

Argument in Favor

Let's Keep Our Parks Clean, Safe, and Open for Everyone.

Parks are where Portlanders come together. They're where we meet friends for a walk, where our kids learn to swim, where seniors stay active, where families gather on sunny days, and where nature thrives in the heart of our city.

But right now, the parks we love are at risk. Without Measure 26-260, Portland Parks & Recreation will lose nearly **half its budget**. That would mean closed community centers, locked pool gates, neglected natural areas, and the loss of free and low-cost programs that thousands of Portland families rely on.

Measure 26-260 provides essential funding to keep our parks open and thriving. It will:

- **Keep playgrounds safe, pools open, bathrooms clean, and trails clear** with daily maintenance and safety checks.
- Fund **free and low-cost programs** so every Portlander can participate.
- Protect our natural areas with **tree planting, wildfire prevention, and habitat restoration**.
- Ensure accountability through **independent audits and a community oversight committee**.

This levy is not just about parks — it's about Portland's quality of life. When our parks are clean, safe, and welcoming, our entire community is stronger.

Join the growing coalition of labor unions, environmental advocates, businesses, community groups, and neighbors across the city who are voting **YES on Measure 26-260** to keep Portland's parks open, clean, green, and thriving.

Vote YES for Portland's Parks! Vote YES for Measure 26-260!

Laborers' International Union of North America Local 483
League of Women Voters of Portland
Northwest Oregon Labor Council, AFL-CIO
Oregon & Southern Idaho District Council of Laborers
Oregon League of Conservation Voters
Portland Metro Chamber
Portland Parks Foundation
The Intertwine Alliance
Trust for Public Land
Olivia Clark, Portland City Councilor
Nafisa Fai, Washington County Commissioner
Mitch Green, Portland City Councilor
Pam Treece, Washington County Commissioner
Keith Wilson, Portland Mayor
Eric Zimmerman, Portland City Councilor

And many more! Visit PortlandersforParks.org for the full list of endorsers.

This information furnished by:
Tony Morse
Portlanders for Parks



WASHINGTON COUNTY ELECTION RESULTS

are available starting
at 8 p.m.
on Election Day

www.washcovotes.org



RESULTADOS DE LAS ELECCIONES DEL CONDADO DE WASHINGTON

están disponibles
a partir de las 8 p.m.
el día de las elecciones

www.washcovotes.org

Washington County

Measure No. 34-345

Ballot Title

Replacement Levy to Support Countywide Library Services

Question: Shall Washington County support library services countywide by levying 37¢ per \$1,000 assessed value for five years, beginning in 2026? This measure may cause property taxes to increase more than three percent.

Summary: Measure replaces levy expiring in June 2026. The levy supports Washington County Cooperative Library Services (WCCLS) and libraries in Aloha, Banks, Beaverton, Bethany, Cedar Mill, Cornelius, Forest Grove, Garden Home, Hillsboro, North Plains, Sherwood, Tigard, Tualatin and West Slope. The expiring levy provides 45% of total WCCLS funding.

Replacement levy would help maintain and provide:

- Reading and learning support for kids and teens, including homework help for students.
- Central services that efficiently link libraries together so users can browse collections and reserve materials for pickup at their nearest library.
- Open hours and access to books and materials for everyone in the community.
- Children's reading events including story times for babies, toddlers and preschoolers.

The replacement levy would set a fixed rate of 37¢ per \$1,000 of assessed value, an increase of 15¢. In 2026, typical homeowners with an assessed value (not market value) of \$348,600 would pay about \$129 annually, or \$4.55 more per month than the current levy expiring in June 2026. The library levy rate was last replaced by voters in 2015.

Estimated levy amount for each year:
\$34,705,141 in 2026-2027
\$36,180,110 in 2027-2028
\$37,717,765 in 2028-2029
\$39,320,770 in 2029-2030
\$40,991,902 in 2030-2031

Reading and learning support for kids and teens, including homework help and online tutoring for students.

Central services that efficiently link libraries together so users can browse collections and reserve materials for pickup at any of the 16 libraries in the county.

Open hours and access to books and materials for everyone in the community.

Children's reading events including storytimes for babies, toddlers and preschoolers.

How would this levy impact a homeowner's taxes?

The replacement levy would set a fixed rate of 37¢ per \$1,000 of assessed value, an increase of 15¢. In 2026, typical homeowners with an assessed value (not market value) of \$348,600 would pay an estimated total of \$129 annually. The annual increase in cost for the typical homeowner would be just over \$54 per year, or \$4.55 per month more than the current levy.

Why would the tax rate go up?

Since voters approved the last levy in May 2020, demand for service has increased and costs have risen. Library services cannot be maintained at the current rate. Replacing the levy would help libraries provide service for all county residents.

What would happen if the replacement levy does not pass?

The expiring levy provides 45% of WCCLS funding for libraries. If the levy does not pass, reductions in library service would occur, including reductions in open hours, book purchases, reading events and reduced level of services that link libraries together. Examples of these services include providing the online library catalog, delivering books to libraries and maintaining access to technology. Reductions would likely begin in July 2026.

For more information, visit wccls.org/levy.

Submitted by:
Alex Barnett
County Counsel

Explanatory Statement

Washington County Cooperative Library Services (WCCLS) is the primary source of funding for public libraries in our county, supporting open hours at libraries in Aloha, Banks, Beaverton, Bethany, Cedar Mill, Cornelius, Forest Grove, Garden Home, Hillsboro, North Plains, Sherwood, Tigard, Tualatin, and West Slope. WCCLS provides systems and support that link 16 full-service libraries into one system, supporting access to books and community events for all county residents. Most libraries are open at least 6 days a week.

This measure would replace a five-year levy that will expire in June 2026. The expiring levy provides 45% of total WCCLS funding. The replacement levy would run from July 2026 through June 2031.

What would the library levy do?

Last year, there were over 2.4 million visits to Washington County libraries. Total checkouts exceeded 7.2 million, saving users \$140 million by borrowing items instead of purchasing them. Demand for e-book and audiobook checkouts has increased 34% in the past four years, and over 75,000 users borrowed an e-book or audiobook last year.

Libraries hosted over 200,000 participants at 6,000 in-person events for kids and teens including summer reading. Additionally, over 10,000 students participated in library programs designed to support reading, learning and student success. Libraries also offer assistance and resources to job seekers or those who want to develop new skills.

The replacement levy would help maintain and provide services for all county residents.

No Arguments in Opposition of this measure were filed.

Washington County

Measure No. 34-345 Arguments

Argument in Favor

VOTE "YES" TO MAINTAIN LIBRARY FUNDING

Hillsboro City Council and Hillsboro Library Board support Measure 34-345!

This Measure Will:

Maintain existing library services: If this measure fails to pass, the scope and quality of library services throughout Washington County will be reduced.

Improve child and adult literacy: This funding maintains summer reading programs critical for our youngest Oregonians' development, multilingual outreach programs in both rural and urban communities, and direct services for home-bound elders and people with disabilities.

"As a former educator and longtime library volunteer, I have seen generations benefit from summer reading. This programming not only sparks learning, but creates community by connecting families." - **Deb Duffe, Hillsboro Library Board Chair**

Advance workforce development: By accessing WiFi, mobile hotspots and computers for checkout, and skills-based programming, folks in our community rely on libraries to draft resumes, access school and job applications, and gain career mobility.

"When I submitted my college financial aid applications using tech at the Shute Park Library as a first-generation low-income student, I discovered firsthand how libraries are critical access points for economic mobility." - **Dorian Russell, Northwest Regional Education Service District Board & Hillsboro Library Board member**

Encourage community connection and curiosity: Robust collections of digital and physical materials expand perspectives, promote critical thinking, and support a curious and engaged public with different points of view. There is something for everyone in the public library's collection of books, e-books, music, movies, and more.

"Celebrating the freedom to read is a cornerstone of American democracy: maintaining library funding provides access to learning for all." - **Katie Rhyne, Hillsboro School Board member & Hillsboro Library Board Vice Chair**

PLEASE JOIN LOCAL LEADERS IN VOTING "YES"

Hillsboro City Council:

Beach Pace, Mayor
Olivia Alcaire
Saba Anvery
Elizabeth Case
Rob Harris
Kipperlyn Sinclair

Hillsboro Library Board:

Deb Duffe, Chair
Katie Rhyne, Vice Chair
Chris Armstrong
Stephanie Hernández
Mary Ludlum
Dorian Russell
Abdulhafiz Usman

This information furnished by:
Dorian Russell

oter Registration Information

Registering to vote

You are qualified to register to vote in Oregon if you can answer yes to the following questions:

- ✓ Are you a resident of Oregon?
- ✓ Are you a US citizen?
- ✓ Are you at least 16 years of age?

If you are 16 years of age, you will not receive a ballot until an election occurs on or after your 18th birthday.

How to register

Register to vote online at **oregonvotes.gov** or pick up a voter registration card at any of the following places:

- Any County Elections Office
- The Secretary of State's Office
- Some state agencies such as the Division of Motor Vehicles
- A voter registration drive
- Some locations of the US Postal Service
- Libraries

After completing your registration card, mail or bring it to our office in person.

The deadline for new registrations and party changes is 21 days prior to Election Day.

What information is required to register?

To complete your registration, you must provide the following:

- Full legal name
- Home address
- Mailing address (if applicable)
- Date of birth
- Signature
- Oregon Driver's License number, Identification Card number, or a Social Security number

Washington County

Measure No. 34-345 Arguments

Argument in Favor

VOTE 'YES' FOR LIBRARIES!

Measure 34-345 will support high-level library services for Washington County residents for the next five years.

For 50 years, residents have enjoyed excellent library service from our countywide system, Washington County Cooperative Library Services. From humble beginnings our libraries, operated by cities and community associations and financed in large part by Washington County, have grown into a major service for the public and centers of community life.

Last year, there were over 2.4 million visits to our 16 full-service public libraries in the county. Total checkouts exceeded 7.2 million, saving users \$140 million by borrowing items instead of purchasing them.

A main focus of our libraries is developing reading skills children will use throughout their lives. More than 200,000 children and teenagers participated in reading programs last year! Preschool reading programs offered in our libraries help prepare our children to succeed in school.

People for Libraries PAC has been working to support countywide library measures since the 1980's because we know that thriving public libraries mean thriving communities.

Please join People for Libraries in voting "YES" for Measure 34-345!

This information furnished by:
Rob Drake, Chair, People For Libraries
People for Libraries PAC

Argument in Favor

**Libraries Enrich Our Lives!
Support Hillsboro's Libraries - Vote Yes on Measure 34-345!**

The Friends of the Hillsboro Public Library and the Library Foundation of Hillsboro ask you to **join us in voting YES on Measure 34-345.**

This is a renewal of the levy that voters have long supported. It supplements County general fund support for the Washington County Cooperative Library Services and directly benefits our Main Library and Shute Park Branch Library. The Hillsboro libraries receive about 40% of their operating budget from the levy.

What does Measure 34-345 do?

- Maintain **open hours** at our libraries
- Support **reading programs for children**, such as summer reading activities and preschooler literacy programs
- Continue purchase of **books, e-books and other materials that are available to all** county libraries
- **Continue outreach services** for homebound residents, Spanish-speaking residents, multi-lingual groups, children in care, and the Jail library.

The cooperative partnership among the county, nine cities and one non-profit organization has been a critical component in stabilizing and maintaining countywide library services and **continues to meet the literacy, education, information, and entertainment needs** of all Washington County residents.

Vote "Yes" to ensure the continued excellence of our county's libraries.

<u>Library Foundation of Hillsboro</u>	<u>Friends of Hillsboro Public Library</u>
Deborah Clarke	Barbara Wright
Kathleen R. Hanna	Michael Wright
Madeleine Brink	Kathy Schertz
Orson Hoeksema	Diantha Broomas
Gabriel Jones-Gallardo	Linda J. Taylor
David Edwards	Brooke Cooper
Rick Paulson	Tom Lane
Karine Kadyan	Jan Breckon
Rob Harris	Patricia Cropp

This information furnished by:
Barbara Wright
Friends of the Hillsboro Public Library

Argument in Favor

Vote YES on Measure 34-345 to Support Tualatin and Sherwood Libraries

Measure 34-345 renews our shared commitment to public libraries by replacing an existing levy for another five years. This levy has a long track record of strong countywide support and for good reason. Our communities love and rely on their libraries.

The levy provides essential funding for key services, including:

- **Children's programs** that build early literacy and school readiness
- **Books, technology, and materials** accessible to all Washington County residents
- **125 hours of weekly open hours** across both libraries, offering critical in-person help
- A growing collection of **e-books and digital resources** to meet modern demand

This levy is **critical** to daily operations:

- Tualatin Public Library depends on the levy for **29%** of its operating budget
- Sherwood Public Library relies on it for **26%**
- This is important to the over 190,000 visitors that each library served in the last year

Last year alone, Tualatin and Sherwood libraries hosted over **480** children's reading programs, with more than **18,000 attendees**. Early literacy is a year-round priority.

Library users enjoy access to a shared countywide collection of **1.5 million items**, including over **227,000 e-books and audiobooks**.

To keep our libraries strong—for our kids, for our communities, for the future—Vote YES on Measure 34-345!

Tualatin:

- Frank Bubenik, Mayor, City of Tualatin
- Valerie Pratt, Tualatin City Council President
- Laura Baker, Friends of the Tualatin Library President
- Royce Hermens, Tualatin Library Foundation President
- Susan C Noack, Tualatin Aging Task Force
- Dana Paulino, Library User
- Robert Kellogg, Library User
- Percie Horsford, Tualatin Teen Library Committee
- Larry McClure, Senior

Washington County

Measure No. 34-345 Arguments

Sherwood:

- Taylor Giles, Sherwood City Councilor
- Kate Noreen, Owner Mudpuddles Toys
- Adam Bienvenu, Owner Sherwood Bookstore
- Jane VanKurken, Senior
- Annalise Ellis, Student
- Jeannette Voss, Friends of the Library President
- Sean Garland, Parent
- Anne Poe, Senior
- Deborah Diers, Sherwood Library Foundation President

This information furnished by:
Deborah Diers
Sherwood Library Foundation

Argument in Favor

VOTE YES

KEEP THE FOREST GROVE CITY LIBRARY A GREAT COMMUNITY ASSET

Measure 34-345 will continue support of countywide library services and is also vital to maintaining services at Forest Grove City Library.

This levy renewal will provide about 26% of Forest Grove's library budget.

The levy will enable continuation of:

- Library hours of operation
- Children's programs that promote school readiness and keep kids reading through the summer.
- Purchase of books and other resources

A YES vote supports all libraries in Washington County, which we can all use, and it also provides vital support to the library in Forest Grove.

Our libraries loan books for all ages as well as movies, music and magazines. Your library card also allows you to borrow eBooks and audiobooks online from your home, school or business.

Please join us in voting for Measure 34-345 to continue the current services in our beautiful Forest Grove library and for all libraries in Washington County.

Edward J. Uecker
Kathleen M. Mandis
Kristy Kottkey
Lauren Miller
Linda D. Saari
Malynda Wenzl, Forest Grove Mayor
Michael M. Moore
Pamela Bailey
Peter B. Truax
Patricia Truax
Philip J. Ruder, Economics Professor, Pacific University
Rod Fuiten
Susan Schubothe
Martha Robertson
Jane Romig
Katherine D. Allnutt
Robert W. Allnutt
Elizabeth K. Smith
Stephanie Lind
Douglas Martin
David Pauli

Carol C. Pauli
John W. Hock
Alana Graham
Peter Smith
Morgan Knapp

This information furnished by:
Michael R. Smith

Argument in Favor

SENIORS ASK FOR YOUR YES VOTE!

As senior citizens in Washington County, we are proud of our communities and the quality of life here. Our libraries are an essential part of that quality. They promote reading, offer access to information for all, and serve as community gathering spots throughout the county.

Our libraries provide:

- **Children's reading programs** that help develop skills needed to excel in school.
- Books and other materials that **are available to all users countywide**, including classics, new releases and e-books.
- Guidance in navigating an increasingly complex world, from Internet searches to the latest computer programs.
- Information resources and programs for seniors which serve to expand our horizons in many areas, including genealogy, health and wellness, travel, food and nutrition, and legal matters.
- Assistance for both workers and job seekers. Library computer users say library technology supports their employment or job searches.

Measure 34-345 replaces an existing levy and will allow our libraries to continue serving residents of all ages for the next five years.

Libraries are worth it! Please join us in voting to support this invaluable community service.

Vote YES for libraries!

This information furnished by:
Debra Brodie

Argument in Favor

Cedar Mill & Bethany Community Library Users
Libraries are our key community centers.
We and our neighbors love our libraries!

Every year, our community

- Visits their libraries more than 425,000 times
- Borrows more than 2.3 million items
- Attends more than 550 library programs
- Volunteers more than 18,000 hours at the libraries

Why we support renewing the levy -

- Continues a variety of services that foster a love of reading and prepare children for school
- Maintains library operating hours and services
- Provides books, video, and audio materials for all citizens from a total collection of 1.5 million physical items and more digital materials.
- Helps keep up with the growth of the Bethany library, which is bursting at its seams!

Washington County

Measure No. 34-345 Arguments

This levy renewal reflects an increased rate, which is a necessary mechanism to keep pace with rising operating costs.

- Passage of this levy provides essential operational funding for both the Bethany and the Cedar Mill Library, helping to serve our growing community.
- **This levy provides about 45% of our total operational funding** and prevents a budget shortfall!

Please help avoid a serious reduction in library hours, services and materials.

Please Join Us: VOTE YES for the Library Levy renewal,

Measure 34-345

Your Yes vote sustains vital library services for our communities.

Signatures

Virginia Bruce, Cedar Mill News	Roy Kim, Central Bethany
Kenneth W. Findley	Stanley Saunders
Lynda Gordon	Bruce Bartlett
Marianne Coalson	Shannon Caster
John Gruher	Gloria Lee
Angela Mollet	Mark D. Richardson
Carol Skowron	Hilary Barrett
Judy Erdman	Claudia McNellis
Deborah Starr	Gweyn Rucker
Paul Sander	

This information furnished by:
Peter Leonard, Executive Director
Cedar Mill Community Library Association

Argument in Favor

Vote YES on Measure 34-345 - Beaverton City Library needs your support!

Beaverton Main and Murray Scholls Libraries operate through a combination of city and county funds, including the Washington County library levy, which Measure 34-345 replaces. Pooling and sharing resources allows Beaverton and other member libraries to provide greater access and more services than any could individually. **Measure 34-345 funding is a critically important part of supporting operations at our libraries in Beaverton and throughout the county.**

As a trusted gathering place where everyone belongs, libraries are a centerpiece of our community. They are a safe and welcoming space for all - a place to connect, learn, and grow together.

Some of the services at Beaverton City Library that Measure 34-345 would help support include:

- Access to 16 libraries in Washington County and a shared collection of books, e-books, movies, music, and more
- Early literacy programs for preschoolers and outreach to schools
- Programs for children and teens that foster school readiness, support homework, and inspire lifelong learning
- Free Wi-Fi, computers and other technology along with support and instruction for technology users
- Programs for all ages which provide opportunities to learn, engage, explore and have fun, including our Makerspace at the Main library
- Study Cubes, Meeting Rooms and other gathering spaces

Please join us in supporting Beaverton City Library and library services throughout Washington County - **Vote YES on Measure 34-345!**

Friends of the Beaverton City Library

Kendra Huddleston, President
Jim Bartos, Treasurer
Gautam Kottapalli, Secretary
Cheryl Livneh
Roger Tobin
Ronnie Wise
Suzan Turley
Brian Vandiver
Erin LaPerle

This information furnished by:
Kendra Huddleston
Friends of the Beaverton City Library

Argument in Favor

**Support Tigard Public Library -
Vote Yes on Measure 34-345**

Each day, about 700 people walk through the doors of the Tigard Library. They come to instill a love of reading in their children. They come to further their own education. They come to improve technological skills and find resources that will help them get good jobs.

Story Times like Book Babies and Fun for Ones teach our kids skills that will prepare them to read at an early age so that they can start school with basic reading abilities. S.T.E.M. programs teach fundamental scientific and technological skills that are increasingly in demand in the job market.

If this levy passes, the Library will continue to provide these essential programs to prepare children for the future.

The Library issues over 200 new library cards every month. These new library cardholders seek the same services that the Library provides to everyone.

If this levy passes, it will allow the Library to serve new, as well as existing users with an up-to-date collection of books and other materials.

The Library encourages students to succeed in school with homework help and other support.

If this levy passes, it will help fund services to help students of all ages succeed.

Why should you vote for this levy?

To maintain the services and hours the Library currently provides. The Tigard Library receives 50% of its funding from Washington County Cooperative Library Services. Approximately 45% of that is funded by the existing levy. Measure 34-345 would continue that funding. To continue to provide the books, other library materials, programs and services that people rely on.

This levy impacts all libraries in Washington County. It replaces an existing levy.

Please join us in voting "Yes" for libraries.

This information furnished by:
Kathy Sleeper, President
Friends of the City of Tigard Library

Washington County

Measure No. 34-345 Arguments

Argument in Favor

YES ON MEASURE 34-345 YES TO A FULL-SERVICE ALOHA COMMUNITY LIBRARY

Over the past 13 years, the Aloha Community Library has become a fundamental asset for the Aloha area. The library provides reading programs and support for Aloha families and children, enhances literacy, and provides a safe environment for learning.

Today's library would not be possible without the support of taxpayers in our community. Residents of Aloha will be able to continue accessing the same books, materials, programs, and technology enjoyed by other Washington County communities with your support for Measure 34-345, a 5-year replacement of our existing levy expiring in June 2026.

A YES vote on Measure 34-345 ensures the Aloha Library remains a valued asset for our community.

Passage of this measure means the Aloha Community Library will provide:

- **Access to the entire Washington County catalog** of books and other materials
- **Local drop-off and pick-up of materials** from the entire County catalog
- **Current hours of operation**
- Programs and events for all ages, including **children's storytime** and other reading programs
- **Professional staff** that assist library users in accessing books and information

Please join the Aloha Community Library Association's Board of Directors in voting YES for our Aloha Library!

Donna Meeuwsen, Vice President
Kim Thomas, Secretary
Rachel McCormick, Treasurer
Jessica Otto
T.S. McCormick
Juan Carlos Gonzalez, Metro Councilor

This information furnished by:
Elizabeth Lewis
Aloha Community Library Association

Argument in Favor

WESTERN WASHINGTON COUNTY LIBRARIES NEED YOUR "YES" VOTES!

We are certain you know that **libraries are a great value for our communities** and offer a great investment return for each dollar spent, but you may not realize that **more than half of our local libraries' operating funds** are supplied by Washington County. A significant share of that county funding depends on successful passage of Measure 34-345.

YES votes for this levy help maintain core services such as children's reading programs free public computers and wi-fi, hours open, and acquisition of new materials.

With passage of this levy....

- In **Banks**, our library will maintain current open hours and services, which include robust programming for children, teens, adults and seniors, as well as expand outreach services to the community.

- In **Cornelius**, our library will be able to maintain current open hours and services including early literacy, homework help, popular programming for all ages, STEM and cultural and informational programs.

- In **North Plains**, our small, rural library will maintain current open hours, and continue our high caliber early literacy programming, our free, highspeed internet, our free public computers, copy/scan/print and fax services and our community will continue to enjoy access to the latest publications and materials.

We urge a YES vote on Measure 34-345 to support reading programs for our kids, adequate open hours, and healthy book budgets for the next 5 years.

Banks Public Library Supporters:

Marsha Kirk, Mayor of Banks
Peter Edison, Banks City Council
Stephanie Jones, President, Friends of the Banks Library
Linda Lybecker

Cornelius Public Library Supporters:

Jeffrey C, Dalin, Mayor of Cornelius
Janel Dalin, President, Cornelius Library Foundation
Karen Hill, President, Friends of the Cornelius Library

North Plains Public Library Supporters:

David Hatcher, former Mayor of The City of North Plains
Susan Brown, President, Friends of The North Plains Public Library
Bridget Sorensen
Maryann Spady, Board, Friends of the North Plains Public Library

This information furnished by:
Susan Brown
Friends of the North Plains Public Library

Argument in Favor

Vote YES for Garden Home & West Slope Community Libraries!

As smaller libraries serving unincorporated parts of Washington County, West Slope and Garden Home Community Libraries delight in making personal connections with neighbors. In July 2025, the nonprofit Garden Home Community Library Association assumed operations of West Slope Community Library, starting a new chapter rooted in West Slope's founding by the Century Club for Women in 1950.

Our libraries provide:

- Over 500 children's programs annually, reaching 10,000+ attendees
- Outreach visits to share books and the love of reading at schools, senior centers, and community events
- Wi-Fi, computers, printers, and technology help to aid students, job seekers, and lifelong learners

Your YES vote will provide more than 40% of the budget to support these libraries. This levy allows us to serve our community by assuring:

- Open hours to meet community needs
- Continued support of children's reading programs and popular adult programs
- Access to materials in all Washington County libraries through the Cooperative's courier services

Washington County

Measure No. 34-345 Arguments

- 24/7 access to a large and increasingly popular digital collection of e-books, audiobooks, and streaming video

Please join us in voting YES and supporting libraries in Garden Home, West Slope, and throughout Washington County!

Eric Danko	John P. Pacella
Jan Fredrickson	Sharon Selberg
Jessica Freeman	Abby Solomon
Elaine Hirsch	Sheri Struk
Esta Mapes	Gail J. Swanstrom
Marie Pacella	Patsy VandeVenter
	Sharon Vedder

This information furnished by:
Kris Moore
Garden Home Community Library Association

Argument in Favor

PLEASE JOIN WASHINGTON COUNTY IN SUPPORT OF PUBLIC LIBRARIES

We believe strongly in the Washington County Cooperative Library system and in **the power of libraries to strengthen our communities, schools and economy**. In this spirit we have unanimously referred Measure 34-345 to voters and now request your continued support for our public libraries.

Measure 34-345, a five-year levy, will:

- Support libraries and branches that **serve all county residents**: Aloha, Banks, Beaverton, Bethany, Cedar Mill, Cornelius, Forest Grove, Garden Home, Hillsboro, North Plains, Sherwood, Tigard, Tualatin, West Slope
- Provide **children's literacy and reading programs** that average over 200,000 child visits per year
- **Expand purchase of books**, e-books and materials that are available to all county libraries; our current collection numbers about 1.5 million items

This measure renews an existing levy, with a moderate tax rate increase to 37 cents per \$1,000 of assessed value.

As your elected Board of County Commissioners, we oversee a wide range of public services, from public health to the justice system to county roads. In each area, we know that smart investments on the front end usually lead to positive outcomes, making for reduced costs over time. Our libraries very much work this way. We make **modest but strategic investments in children's programs** and early literacy, which lead to school readiness and eventually mean better prospects for a good job and a good life.

Measure 34-345 and Measure 34-346 (the public safety levy) give voters an opportunity to reinvest in safe and livable communities, and we urge a "YES" vote on both!

Washington County Commission

Chair Kathryn Harrington
Commissioner Nafisa Fai
Commissioner Pam Treece
Commissioner Jason Snider
Commissioner Jerry Willey

This information furnished by:
Commissioner Pam Treece
Commissioner Jerry Willey

Argument in Favor

Local Businesses Support Library Services

The Washington County Chamber urges your support of Measure 34-345 to support County-wide library services.

Healthy local economies run on talent, connectivity, and trust. Libraries quietly power all three. As employers and job creators, we support dedicated funding for library services because it strengthens our workforce, supports entrepreneurs, and keeps our communities attractive places to live and work.

Libraries expand the talent pipeline—from early literacy and homework help to adult classes, job search support, and digital skills. They help local entrepreneurs and small businesses with free meeting rooms, research tools, places to build and try ideas, and staff who guide you from concept to launch. And they advance digital equity so more neighbors can apply for jobs, complete training, and connect with local companies.

Measure 34-345 will help to:

- Keep library hours reliable to meet growing demand.
- Maintain and update technology, internet access, and collections.
- Provide programs that support children's reading and school readiness.
- Offer resources that help job seekers and employers connect.
- Ensure countywide access through a coordinated network of libraries.
- Deliver value with clear accountability and transparent reporting.

For employers, this is practical infrastructure with measurable returns: better-prepared workers, stronger small businesses, and neighborhoods where families want to put down roots. When libraries thrive, the local economy does too.

We urge your support for Measure 34-345 to continue investing in County-wide library services as a smart investment in our people and our prosperity.

This information furnished by:
Deanna Palm
Washington County Chamber

Washington County

Measure No. 34-346

Ballot Title

Replacement Local Option Levy for Countywide Public Safety Services

Question: Shall Washington County enhance public safety services by levying 66¢ per \$1,000 assessed value for five years, beginning in 2026? This measure may cause property taxes to increase more than three percent.

Summary: Measure replaces levy expiring in June 2026, and enhances funding for a wide range of countywide public safety services including:

- Investigating and prosecuting theft, car theft, break-ins and graffiti.
- Prosecuting child abuse and child pornography cases.
- Preventing domestic violence and expanding emergency assistance for victims harmed by it.
- Combating the impact of deadly drugs like fentanyl and dismantling drug trafficking organizations.
- Fully funding the jail to keep those with more dangerous charges in court-ordered custody.
- Preventing crime with mental health response teams, job training, employment and addiction services to keep youth and adults from returning to the justice system.

Since voters last approved the levy, state funding has decreased, and costs have increased. The same services cannot be maintained at the current rate. Replacement helps preserve public safety and keep up with inflation.

The replaced levy would set a fixed rate of 66¢ per \$1,000 of assessed value, an increase of 19¢. In 2026, typical homeowners with an assessed value (not market value) of \$348,600 would pay about \$230, or \$6 more per month.

Estimated levy amount for each year:

\$61,906,469 in 2026-2027

\$64,537,493 in 2027-2028

\$67,280,337 in 2028-2029

\$70,139,751 in 2029-2030

\$73,120,691 in 2030-2031

Explanatory Statement

Washington County provides public safety services to every city, unincorporated neighborhood, and rural area of Washington County.

This measure would replace a five-year levy expiring in June 2026. The Public Safety Levy funds a wide range of public safety services for all County residents, including countywide police services, jail, prosecution, parole, probation, victims' assistance and juvenile justice services. A replacement levy would run from July 2026 to June 2031.

What would replacement of this levy do?

This measure would maintain and enhance current levels of countywide public safety services, including:

- **Investigating and prosecuting theft, car theft, break-ins and graffiti.**

An average of one vehicle has been stolen per day from 2021-2024.

- **Prosecuting child abuse and child pornography cases.**

Child abuse reports increased by 17% from 2021-2024, an average of nine reports every day.

- **Protecting victims of domestic violence** by expanding assistance for emergency programs and preventing domestic violence from occurring in the first place.

Domestic violence reports increased by 22% from 2021-2024, an average of four per day, and more violence may be going unreported. Expanding assistance is meant to prevent further violence.

- **Combating the impact of deadly drugs** like fentanyl and dismantling drug trafficking organizations.

Over the last three years, the Sheriff's Office has seized 1.3 million fentanyl pills, preventing tens of thousands of overdoses.

- **Fully funding the jail** to keep those with more dangerous charges in court-ordered custody.

The Jail serves every police agency in Washington County, but it is not operating at full capacity due to staffing and funding challenges. This levy would help restore jail deputy and other positions, returning the Jail to full and more efficient capacity.

- **Preventing crime** with mental health response teams, job training, employment and addiction treatment to keep youth and adults from returning to the justice system.

Specially trained deputies and mental health professionals connect those with a mental health crisis to supportive services, improving community safety and often avoiding criminal justice involvement.

How would this replacement affect a homeowner's taxes?

The replaced levy would set a fixed rate of 66¢ per \$1,000 of assessed value, an increase of 19¢. In 2026, typical homeowners with an assessed value (not market value) of \$348,600 would pay about \$230, or \$6 more per month.

Why would the tax rate go up?

Since voters last approved the levy, state funding has decreased and costs have increased. The same services cannot be maintained at the current rate. Replacement helps preserve public safety and keep up with inflation.

What happens if the replacement levy does not pass?

The expiring levy funds 18% of the County's public safety system. Although public safety would remain a priority, reductions affecting prosecution, law enforcement, supervision, corrections and domestic violence services would likely begin in 2026.

More information?

Visit the Washington County website at wcor.us/PublicSafetyLevy

Submitted by:
Alex Barnett
County Counsel

No Arguments in Opposition of this measure were filed.

Washington County

Measure No. 34-346 Arguments

Argument in Favor

**Yes on Measures 34-345 and 34-346
For A Smart, Safe, & Strong Washington County**

Washington County is a wonderful place to live, and we all benefit from safe neighborhoods, accessible libraries, convenient parks, and much more. This November, voters have the opportunity to support two levies that provide critical funding for core pieces of our County's livability – our library system and our public safety system.

Measure 34-345

Libraries are core to the fabric of a strong community. As a kid, the local book mobiles (a mobile library) were a huge part of my summers, and the women who drove them served as early mentors to me. Libraries have continued to be a large part of my life, and I believe strongly in their power to strengthen our communities, schools, and economy. They are also key connection points for people to gather, and trusted places for resources and information.

By passing Measure 34-345, we can ensure our library branches across the county can continue to serve all residents, provide children's literacy and reading programs, and expand our collection of books and materials.

Measure 34-346

Washington County residents enjoy the advantages of living in safe communities, in large part because of our strong public safety and justice system. For 25 years, the Public Safety Levy has provided critical funding to our Sheriff's and District Attorney's Offices, as well as Community Corrections and Juvenile Services. These agencies work in partnership to keep our neighborhoods and communities safe, and Measure 34-346 provides the necessary resources for them to do so.

By passing Measure 34-346, we can maintain and enhance public safety services – including essential services such as countywide law enforcement response, prosecution support, and programs dedicated to assisting crime victims and juveniles.

Please join me in voting yes on Measures 34-345 and 34-346 to protect these core services that make our county a great place to live.

Pam Treece

Washington County Commissioner
Candidate for Washington County Chair

This information furnished by:
Pam Treece

Argument in Favor

County Leaders Support Measure 34-346

As your elected County leaders, we work to ensure comprehensive public safety for all of the communities that make up Washington County. Our public safety system is a collaborative network of law enforcement agencies, emergency services, and programs for victims - all of which benefit from the funding provided by Measure 34- 346.

Measure 34-346 funds 16% of the budget across this system, including for the Sheriff's Office, District Attorney's Office, Community Corrections, and Juvenile Services.

Resources from Measure 34-346 fund services to:

- **Keep kids safe** by investigating and prosecuting child abuse

- **Prevent the spread of dangerous drugs** by combating the fentanyl epidemic and dismantling drug trafficking organizations
- **Support families affected by domestic violence** with expanded assistance and emergency programs
- **Increase neighborhood livability** by investigating and prosecuting theft, car theft, break-ins, and graffiti
- **Stabilize volatile situations** through the Mental Health Response Team
- **Reduce crime amongst juveniles** by supporting programs for youth and families
- **Adequately staff the jail** to keep pace with growth

Washington County residents enjoy the advantages of living in safe communities, close to parks, libraries, and high-quality schools. For 25 years, the Public Safety levy, supported by voter funding, has helped provide the necessary resources to effectively prevent, respond to, and prosecute crimes in a timely manner.

At a cost of \$0.66 per \$1,000 of assessed home value, the renewal of this funding through Measure 34-346 is a critical part of not only maintaining existing services but enhancing them to better serve our community. That's why your County Board of Commissioners unanimously endorses a yes vote on Measure 34-346.

Measure 34-346 benefits residents in every city, every unincorporated neighborhood, and across rural Washington County. **Join us in voting YES on Measure 34-346!**

Washington County Board of Commissioners

Chair Kathryn Harrington

Nafisa Fai

Jason Snider

Pam Treece

Jerry Willey

This information furnished by:
Commissioner Nafisa Fai
Commissioner Jason Snider

Argument in Favor

Our criminal justice system is a complicated web of crucial components. Each must be fully functional for the system to work and for our courts to ensure the fundamental principles of fairness and due process are met for all appearing before a judge.

In Washington County, we struggle with too few sheriff's deputies. This hinders transportation of defendants to court and defense attorneys meeting with clients. Force releases of defendants result in increased failures to appear for court, warrants, and churn through our system making court less efficient and our community less safe. This inevitably impacts the safety and functioning of our jail, community, and court.

Our district attorney's office recently cut its child support enforcement division due to budget cuts. If this levy doesn't pass, it is likely that other important programs such as our many successful treatment courts might be cut next, as they

The printing of these arguments does not constitute an endorsement by Washington County, nor does the county warrant the accuracy or truth of any statements made in the arguments.

Washington County

Measure No. 34-346 Arguments

are nonessential prosecutorial functions. This would mean fewer options to avoid incarceration for defendants with substance abuse or mental health conditions that resulted in their convictions, who might otherwise be able to be rehabilitated rather than go to prison.

Although not a part of this levy, Washington County suffers from a shortage of public defense attorneys. Just as we need to fully fund public defense services to ensure every person accused of a crime has adequate representation, we also need to ensure funding for all crucial parts of the criminal justice system.

For our justice system to function, public defense, the district attorney's office, and the sheriff's office all need adequate funding. If the local justice system is a chair and the court, public defense, district attorney, and sheriff are the legs, the chair will break if any legs fail. I support this public safety levy because my ability to preside over a fair and just court is inhibited when any core component fails to function due to lack of funding.

Washington County Circuit Court

Presiding Judge Rebecca Guptill

This information furnished by:
Rebecca Guptill

Argument in Favor

Your Public Safety Leaders Support Measure 34-346

As your elected public safety leaders, we aim to prevent crime, investigate it when it occurs, and prosecute it accordingly. To provide the high-level public safety services we know our community relies on, we are asking for your continued support for the Public Safety Levy.

For 25 years, the Public Safety Levy has effectively supported services to keep Washington County residents safe. It funds various services to improve our public safety system, including countywide law enforcement response, proper jail staffing, timely prosecution, effective parole and probation supervision, vital assistance for victims, and juvenile justice services.

Currently, the Levy funds approximately 16% of the Public Safety & Justice System budgets, which include the Sheriff's Office, District Attorney's Office, Community Corrections, and Juvenile Services. These resources are critical for maintaining community safety and enhancing them to serve you better.

Measure 34-346 will help us address crime and enhance the safety of our communities.

Measure 34-346 helps us keep the community safe by providing resources to:

- Investigate and prosecute child abuse and other violent and sexual crimes against children to keep kids safe
- Combat the fentanyl epidemic and dismantle drug trafficking organizations to keep these harmful substances out of our communities
- Deploy specially trained deputies and mental health professionals who provide immediate responses to stabilize volatile situations
- Expand assistance and emergency programs for families affected by domestic violence

- Adequately staff the jail to keep pace with growth and maintain court-ordered custody for individuals charged with dangerous crimes
- Support youth and families to prevent crime among juveniles
- Investigate and prosecute theft, car theft, break-ins, and graffiti to increase neighborhood safety and livability

The Public Safety Levy provides services to residents of every city, unincorporated neighborhood, and rural areas of Washington County.

Please join us in voting YES on Measure 34-346.

Sheriff Caprice Massey

District Attorney Kevin Barton

This information furnished by:
Caprice Massey
Washington County Safe Communities

Argument in Favor

Help Us Keep The Community Safe: Vote Yes on Measure 34-346!

Washington County Law Enforcement & Prosecutors
Support 34-346

As Sheriff's deputies and prosecutors in Washington County, we work hand in hand every day to investigate and prosecute crimes to keep our community safe.

We consider ourselves fortunate to protect and serve the nearly 600,000 people who live in Washington County. Because of ongoing voter-approved funding for the Public Safety Levy, our public safety system is able to investigate and prosecute:

Child Abuse

Child abuse reports increased by 17% from 2021 to 2024, an average of nine reports every day. Measure 34-346 provides resources for us to continue to investigate and prosecute child abuse and other violent and sexual crimes against children.

The Drug Epidemic

We are currently facing a significant fentanyl and addiction crisis. Over the past three years, the Sheriff's Office has successfully seized 1.3 million fentanyl pills. Measure 34-346 provides funds to equip law enforcement to combat the devastating impact of deadly drugs like fentanyl and dismantle drug trafficking organizations.

Domestic Violence

Reports of domestic violence have seen a troubling increase of 22% from 2021 to 2024, averaging around four incidents reported each day. Measure 34-346 enhances assistance and emergency programs for families affected by domestic violence and seeks to implement preventative measures to reduce further violence.

Impacts to Neighborhood Livability

From 2021 to 2024, an average of one vehicle was stolen per day. The levy funds services for investigating and prosecuting theft, car theft, break-ins, and graffiti to increase neighborhood safety and livability.

Washington County

Measure No. 34-346 Arguments

"The resources from this levy are critical to keeping our communities safe. With voter renewal of Measure 34-346, our teams can continue to provide the high level of service we know our residents rely on for community safety and neighborhood livability." - **Frank Ward, WCPOA President, & Allison Brown, WCPAA President**

Washington County Police Officers Association

Washington County Prosecuting Attorneys Association

This information furnished by:
Caprice Massey
Washington County Safe Communities

Argument in Favor

Mental Health Advocates Support Measure 34-346

Vote YES to Support the County's Mental Health Response Team

LifeWorks NW, one of the largest behavioral health providers in Washington County, strongly supports Measure 34-346 to fund critical county-wide public safety services.

LifeWorks NW staffs the clinical half of the county's Mental Health Response Team (MHRT). The MHRT is a partnership between the Sheriff's Office and mental health clinicians who work shoulder-to-shoulder to respond to emergency calls related to individuals experiencing a mental health crisis. This innovative partnership between the Sheriff's Office and LifeWorks NW supports people across the county through funding from Measure 34-346.

When deputies receive training on how to intervene in a mental health crisis, they're better equipped to successfully de-escalate a situation, resulting in better outcomes for the entire community. Training in crisis intervention and de-escalation means more people in crisis receive the mental health interventions they need.

By connecting people to the necessary resources and services, these teams help divert those with mental illness from the criminal justice system, which in turn alleviates pressure on both jail and emergency room capacities. This outcome is better for those challenged by a mental health crisis, their families or neighbors, and the deputies responding to a call.

The Mental Health Response Team is a necessary component of our comprehensive public safety system in Washington County. In addition to these teams, the levy funds other services that support people who are suffering in our community, including investigation and prosecution of child abuse, and expanded assistance and emergency programs for families affected by domestic violence.

Join local mental health advocates and service providers in voting YES on Measure 34-346.

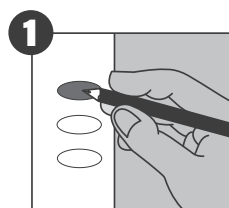
Mary Monnat, President and CEO, LifeWorks NW

Tamy Linver, Board Chair, LifeWorks NW

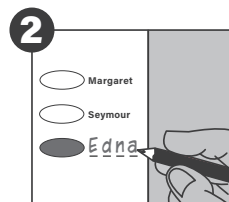
This information furnished by:
Caprice Massey
Washington County Safe Communities

Complete your ballot

Carefully read and follow all instructions printed on your ballot.



To vote, completely fill in the oval next to your choice.



To write-in a candidate:

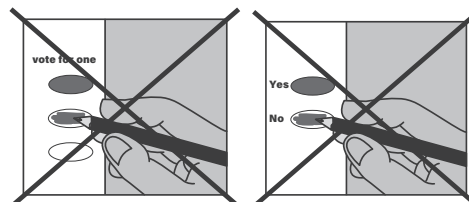
→ Clearly print their name on the blank line provided on the ballot

-and-

→ Fill in the oval next to the name you wrote-in

You do not have to vote on all contests. Those you do vote on will still count.

Check for errors



If you vote for more than one option, your vote **will not count** for that candidate or measure.



Check your ballot carefully

You can not change your vote after you have returned your ballot.

Contact Washington County Elections at **(503) 846-5800** or **elections@washingtoncountyor.gov** to request a replacement ballot if:

- you make a mistake
- you lose your ballot
- your ballot is damaged or spoiled
- or for any other reason.

The printing of these arguments does not constitute an endorsement by Washington County, nor does the county warrant the accuracy or truth of any statements made in the arguments.

Washington County

Measure No. 34-346 Arguments

Argument in Favor

Vote Yes on Measure 34-346 to Help Prevent and Address Family Violence

Measure 34-346 plays a pivotal role in supporting our community's safety by funding 16% of the budget for our public safety system. This includes critical services to address family violence, including expanded assistance and emergency programs for families affected by domestic violence.

The impacts of family violence and abuse are felt across all parts of Washington County. Reports of domestic violence have seen a troubling increase of 22% from 2021 to 2024, averaging around four incidents reported each day. Additionally, child abuse reports increased by 17% from 2021 to 2024, an average of nine reports every day. These statistics underscore the reality that many instances of violence go unreported, indicating a potentially larger issue.

In response to these growing concerns, Measure 34-346 provides resources for the Sheriff's Office to continue to investigate child abuse and other violent and sexual crimes against children, and the District Attorney's office to enhance the prosecution of these crimes. It will also provide support for the Family Peace Center, an innovative collaboration of public safety, government, and nonprofit partners coming together to provide intervention, prevention, healing, and hope for survivors of domestic violence, sexual assault, and child abuse, all under one roof.

Washington County's public safety ecosystem is a collaborative network of law enforcement agencies, emergency services, and programs for victims, and this approach will ensure that Washington County has a comprehensive support system for everyone impacted by family violence. Please support this ongoing work to help those in our community by voting yes on Measure 34-346.

Rachel Schutz, Executive Director, Family Justice Center

If you or someone you know is in an unsafe situation, please contact 503-430-8300.

This information furnished by:
Caprice Massey
Washington County Safe Communities

Argument in Favor

Washington County's Safety System Protected Our Family Members.

We Support Measure 34-346.

In a time of crisis, you want the team answering a 911 call to have the resources they need to help. When these community members went through a scary situation, the Sheriff's Office and its partners were there. Measure 34-346 will ensure they are ready when you need them.

"My family lives on rural land and a few summers ago, my five-year-old wandered away from home. A family member called 911, and even though we are in a rural area, the Sheriff's Office was at my house before I was able to get home from work. Search and rescue, the K-9 team, and the fire department were all there and working quickly to find my kid. They combed the woods for hours, and ultimately were able to use advanced technology and the K-9 Griff to bring my kid home safely. I am so thankful to them and strongly support making sure they have

the resources they need to keep us safe in times like this."
– Katrina Dallas, Washington County Resident

"Earlier this year, my husband, Bill, who suffers from Parkinson's and dementia, went missing from our home in Washington County. After being unable to locate him in our neighborhood, I called 911. The Washington County Sheriff's Office responded quickly and were able to locate and rescue him within three hours. They tracked him using his Project Lifesaver bracelet, and used K-9 teams to find him fallen into a ravine of dense foliage. They were able to rescue him and return him to safety. I support the public safety levy because I've now seen firsthand how all the different parts of our system spring into action to keep us safe. When you are in a scary situation like I was, you want our public safety system to have all the resources necessary to help." – Debbie McCord, Washington County Resident

This information furnished by:
Caprice Massey
Washington County Safe Communities

Argument in Favor

A Safe Community is Good for Business:

Washington County's Business Community Supports Measure 34-346

Washington County residents enjoy the advantages of living in safe communities near parks, libraries, and high-quality schools. It is also home to a diverse array of large and small businesses that keep our local economy strong. Sustaining livable and safe communities benefits residents and businesses, ensuring Washington County remains the place we love.

We support Measure 34-346 because it provides funding for critical public safety services that keep all of us safe. Measure 34-346 currently funds 16% of the budget for the Sheriff's Office, District Attorney's Office, Community Corrections, and Juvenile Services. Together, these services help keep our neighborhoods and downtowns safe by providing resources for:

Investigating and Prosecuting Theft and Property Crimes

Theft and property crimes impact neighborhood safety and local businesses. For local businesses, it is critical that customers feel safe and secure visiting their stores and downtown areas. Measure 34-346 funds services for investigating and prosecuting theft, car theft, break-ins, and graffiti to increase neighborhood safety and livability.

Combating the Drug Epidemic

Our current fentanyl and addiction crisis threatens our community's safety and livability. Measure 34-346 would provide resources to dismantle drug trafficking organizations and implement strategies to keep these harmful substances out of our communities.

Increasing Family and Neighborhood Safety

Everyone deserves to feel safe in their homes and neighborhoods. The levy would allow the Sheriff's Office to continue to investigate child abuse and other violent and sexual crimes against children, and the District Attorney's Office to enhance the prosecution of these crimes. It will also expand assistance and emergency programs that provide critical services for families affected by domestic violence.

It's against the law to:

- ✗ sign another person's ballot return envelope for them
- ✗ vote more than once in an election or cast a fraudulent ballot
- ✗ vote a ballot if you are not legally qualified to do so
- ✗ coerce, pressure or otherwise unduly influence another voter
- ✗ sell, offer to sell, purchase or offer to purchase another voter's ballot
- ✗ obstruct an entrance of a building in which a voting booth or official ballot dropsite is located
- ✗ deface, remove, alter or destroy another voter's ballot, a posted election notice or election equipment or supplies
- ✗ attempt to collect voted ballots within 100 feet of an official ballot dropsite
- ✗ establish a dropsite without displaying a sign stating "Not An Official Ballot Dropsite"

Any violations of the identified election laws are subject to penalties ranging from Civil Penalties (Up to \$250 per violation), Class A Misdemeanors or Class C Felonies.

For more information about voting in Oregon or if you think your rights as a voter have been violated:

oregonvotes.gov

1 866 673 VOTE / 1 866 673 8683

se habla español

1 800 735 2900

for the hearing impaired

Washington County

Measure No. 34-346 Arguments

For \$0.66 cents per thousand dollars of assessed home value, Measure 34-346 benefits all of Washington County – every city, unincorporated neighborhood, and rural areas. It is a worthwhile investment to ensure safe communities and downtowns.

Washington County Chamber of Commerce

Beaverton Area Chamber of Commerce

This information furnished by:

Caprice Massey

Washington County Safe Communities

Argument in Favor

WASHINGTON COUNTY MAYORS SUPPORT MEASURE 34-346

Comprehensive Public Safety for Cities Across Our County

As Mayors in Washington County, we urge a yes vote on Measure 34-346. Our cities operate effective police departments, but we cannot ensure public safety alone. A comprehensive countywide public safety system is necessary to keep our cities great places to live, work, and play. Measure 34-346, the longstanding Public Safety Levy, is critical.

It Serves All of Us

Measure 34-346 provides public safety services to residents of every city, unincorporated neighborhood, and rural areas of Washington County.

It Has Worked for 25 Years

First passed in 2000, the Public Safety Levy has supported public safety services to keep our residents safe for 25 years. Voters have consistently supported renewal of this necessary and affordable levy.

It Keeps Residents Safe

Measure 34-346 provides resources for countywide law enforcement response, proper jail staffing, timely prosecution, effective parole and probation supervision, vital victim assistance, and juvenile justice services.

It Provides a Wide Range of Critical Services

The levy funds services to investigate and prosecute child abuse and domestic violence, combat the drug epidemic, and fully fund the jail so staffing levels will keep pace with population growth. It also helps with livability, providing resources to investigate and prosecute theft, car theft, break-ins, and graffiti, and for Mental Health Response Teams, which are specially trained to respond to volatile situations.

It's Cost-Effective

For .66 cents per thousand dollars of assessed home value, renewing this funding through Measure 34-346 is critical to improving service levels and keeping Washington County residents and their neighborhoods safe.

Please join us in voting Yes on Measure 34-346.

Mayor Lacey Beaty, Beaverton

Mayor Frank Bubenik, Tualatin

The printing of these arguments does not constitute an endorsement by Washington County, nor does the county warrant the accuracy or truth of any statements made in the arguments.

Washington County

Measure No. 34-346 Arguments

Mayor Heidi Lueb, Tigard

Mayor Marsha Kirk, Banks

Mayor Beach Pace, Hillsboro

This information furnished by:

Caprice Massey

Washington County Safe Communities

Argument in Favor

Local Police Chiefs Support Measure 34-346

For 25 years, residents in every city, unincorporated neighborhood, and across rural areas of Washington County have benefited from the County's Public Safety Levy. Currently up for renewal, Measure 34-346 is necessary to ensure safety across our County.

Measure 34-346 funds services already in place and enhances other programs throughout the criminal justice system that allow our police departments to protect and serve our cities most effectively. This includes services to:

- Investigate child abuse and other violent and sexual crimes against children, and enhance the prosecution of these crimes
- Combat the devastating impact of deadly drugs like fentanyl, enabling work to dismantle drug trafficking organizations and implement strategies to keep these harmful substances out of our communities
- Fully fund the County jail, a crucial facility that serves all police agencies within Washington County and is currently not operating at full capacity
- Support the work of the County's Mental Health Response Team, specially trained deputies and mental health professionals who stabilize volatile situations
- Expand assistance and emergency programs that provide critical services for families affected by domestic violence
- Help address crime among juveniles through programs to support youth

Measure 34-346 funds an estimated 16% of the budget for the Sheriff's and District Attorney's Offices, along with partner public safety agencies. Without renewal of this funding, the County would see significant cuts to services that residents and businesses rely on for community safety and neighborhood livability.

These services are critical to complementing our city departments' work and ensuring public safety services are connected and collaborative across the entire county. We urge you to vote YES on Measure 34-346 to support Washington County's public safety system.

Beaverton Police Chief Stacy Jepson

Cornelius Police Chief James M. Coley

Hillsboro Police Chief Jim Coleman

North Plains Police Chief Nick Jones

Sherwood Police Chief Ty Hanlon

Tigard Police Chief Jamey McDonald

Endorsements are made personally and not on behalf of any organization.

This information furnished by:

Caprice Massey

Washington County Safe Communities

Argument in Favor

Support Measure 34-346 for Safe Neighborhoods & Kids!

Washington County residents enjoy the advantages of living in safe communities, close to parks, libraries, and high-quality schools. Measure 34-346 funds comprehensive public safety services for neighborhoods and communities across Washington County – from Raleigh Hills and Beaverton to Forest Grove and Gales Creek. Community members know this levy is critical to our safety; we are voting yes!

Measure 34-346 will allow our public safety system to:

Address Child Abuse & Domestic Violence

The levy allows the Sheriff's Office to continue to investigate child abuse and other violent and sexual crimes against children, and the District Attorney's office to enhance the prosecution of these crimes. It also expands assistance for families affected by domestic violence.

Combat the Drug Epidemic

The funds from the levy will help the Sheriff's Office continue to combat the fentanyl and addiction crisis. This will enable teams to dismantle drug trafficking organizations and implement strategies to keep these harmful substances out of the hands of our youth.

Increase Neighborhood Livability

The levy funds services for investigating and prosecuting theft, car theft, break-ins, and graffiti, to increase neighborhood safety and livability.

Continue to Deliver High Levels of Service in Every Community

The public safety levy provides funding for a wide range of public safety services to residents in every city, unincorporated neighborhood, and rural areas of Washington County.

The Public Safety Levy has been effectively supporting public safety services to keep Washington County residents safe for 25 years. For .66 cents per thousand dollars of assessed home value, renewing this funding through Measure 34-346 is critical to improving service levels and keeping Washington County residents and their neighborhoods safe. **We must renew the levy to address crime and enhance the safety of our communities.**

Join us in voting YES on Measure 34-346!

Ryan Garrick, Bull Mountain
Melissa Laird, Bethany
Jessica Miyake, Aloha
Ricardo Moreno, Cedar Mills
Terry Wagner, Aloha

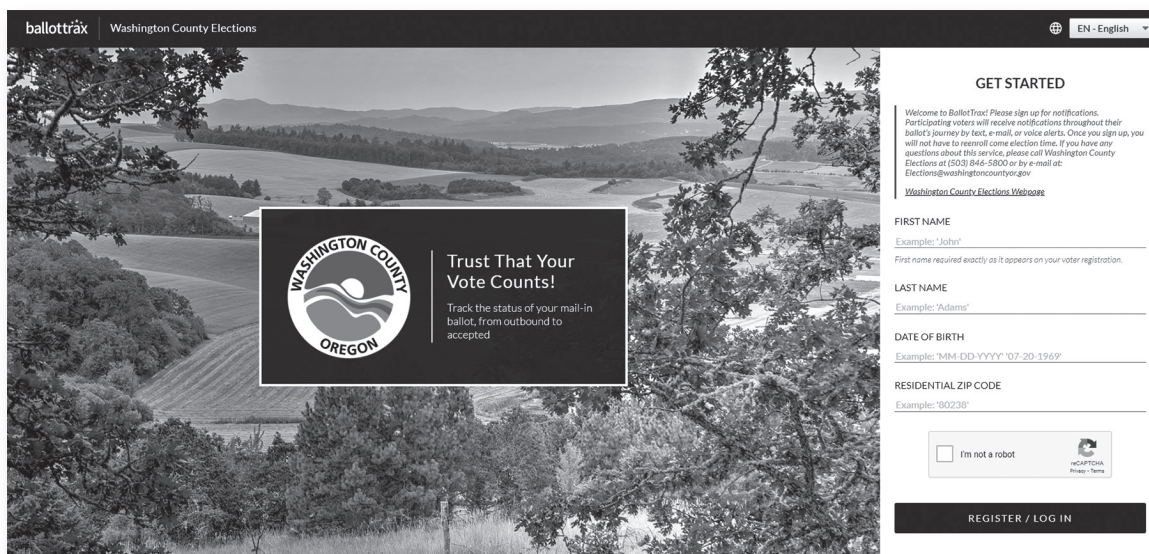
This information furnished by:

Caprice Massey

Washington County Safe Communities

Track Your Ballot!

Sign up to receive updates and notifications about your ballot from Washington County Elections. Receive text, email, or voice alerts when we have mailed your ballot, when your ballot has been received at the Elections office, and when your ballot has been accepted and counted.



The screenshot shows the BallotTrax website for Washington County Elections. The header includes the BallotTrax logo and the text "Washington County Elections". A language selector in the top right corner is set to "EN - English". The main content area features a scenic background image of a valley. On the left, there is a circular logo for Washington County Oregon with the text "Trust That Your Vote Counts!" and a subtext "Track the status of your mail-in ballot, from outbound to accepted". On the right, there is a "GET STARTED" section with a welcome message and a sign-up form. The form includes fields for "FIRST NAME" (with an example "John"), "LAST NAME" (with an example "Adams"), "DATE OF BIRTH" (with an example "MM-DD-YYYY" 07-20-1969), and "RESIDENTIAL ZIP CODE" (with an example "90238"). Below the form is a checkbox for "I'm not a robot" and a "REGISTER / LOG IN" button.

Sign up at
washcovotes.ballottrax.net/voter
or scan this QR code



The Washington County ballot tracking program is a partnership with i3ballot.
If you have any questions about this service, please call
Washington County Elections at **(503) 846-5800** or email us at
elections@washingtoncountyor.gov

**Sign up today to begin receiving
notifications on your ballot!**



WASHINGTON COUNTY Official Ballot Drop Sites

Return your voted ballot to an official ballot drop box by 8 p.m. on Election Day. No postage is required.

All of the official drop boxes listed below are open 24 hours a day until the 8 p.m. deadline on Election Day.

ALOHA

Aloha Community Library

17455 SW Farmington Rd, Ste. 26A
Aloha, OR 97007

BANKS

Banks City Hall/Library

42461 NW Market Street
Banks, OR 97106

BEAVERTON

Beaverton City (Near Library)

Curbside on Hall Boulevard,
between 3rd and 5th Streets
Beaverton, OR 97005

Beaverton Library-Murray Scholls

11200 SW Murray Scholls Pl, Ste. 102
Beaverton, OR 97007

Bethany Library

15325 NW Central Dr, Ste J-8
Portland, OR 97229

Cedar Mill Community Library

1080 NW Saltzman Rd
Portland, OR 97229

Washington County Service Center East

3700 SW Murray Blvd
Beaverton, OR 97005

West Slope Community Library

3678 SW 78th Ave
Portland, OR 97225

CORNELIUS

Cornelius City Hall

1355 N Barlow St
Cornelius, OR 97113

FOREST GROVE

Forest Grove City Library

Pacific Ave & Birch St
Forest Grove, OR 97116

GARDEN HOME

Garden Home Community Library

7475 SW Oleson Rd
Portland, OR 97223

HILLSBORO

Hillsboro Main Library

2850 NE Brookwood Pkwy
Hillsboro, OR 97124

Hillsboro Public Library-Shute Park

775 SE 10th Ave
Hillsboro, OR 97123

Public Services Building Parking Lot

155 N 1st Ave
Hillsboro, OR 97124

Washington County Elections

2925 NE Alcolek Dr, Ste 170
Hillsboro, OR 97124

Westside Commons

801 NE 34th Ave
Hillsboro, OR 97124

KING CITY

King City City Hall

15300 SW 116th Ave
King City, OR 97224

NORTH PLAINS

North Plains City Hall

31360 NW Commercial St
North Plains, OR 97133

SHERWOOD

Sherwood City Hall

22560 SW Pine St
Sherwood, OR 97140

TIGARD

Tigard City Hall

13125 SW Hall Blvd
Tigard, OR 97223

TUALATIN

Tualatin City Hall

18880 SW Martinazzi Ave
Tualatin, OR 97062

Scan this QR code
to see these drop site
locations on a map:



You may drop off your ballot at any official ballot drop box or elections office in the State of Oregon.

Washington County Elections
2925 NE Alcielek Drive, Suite 170
Hillsboro, OR 97124-7523



Nonprofit Organization
CAR-RT SORT
US Postage
PAID
Portland, OR
Permit No. 2467

Residential Customer

Dated Election Material



Voters' Pamphlet

www.washcovotes.org