

# Steering Committee

May 20, 2021



**Center for Addictions  
Triage and Treatment**  
A Feasibility Study



**WASHINGTON COUNTY**  
**OREGON**

Department of Health and Human Services

# Meeting Overview

- Project Updates
  - Feasibility Study
  - Masterplan approach
  - Facility Planning
- Planning for next stage of work
  - Focus areas
  - Work group structure
  - Provider selection
- Next Steps



# Project Updates

- Study provided to County leadership
- Feedback:
  - Argument for project is very strong
  - Services funding unclear
  - Concern about ability to find suitable property
  - Need a masterplan

# Project Updates

- Feasibility study revisions:
  - Increased flexibility for site and implementation options
  - Clarification of funding for services
  - More recognition of the need to engage cities

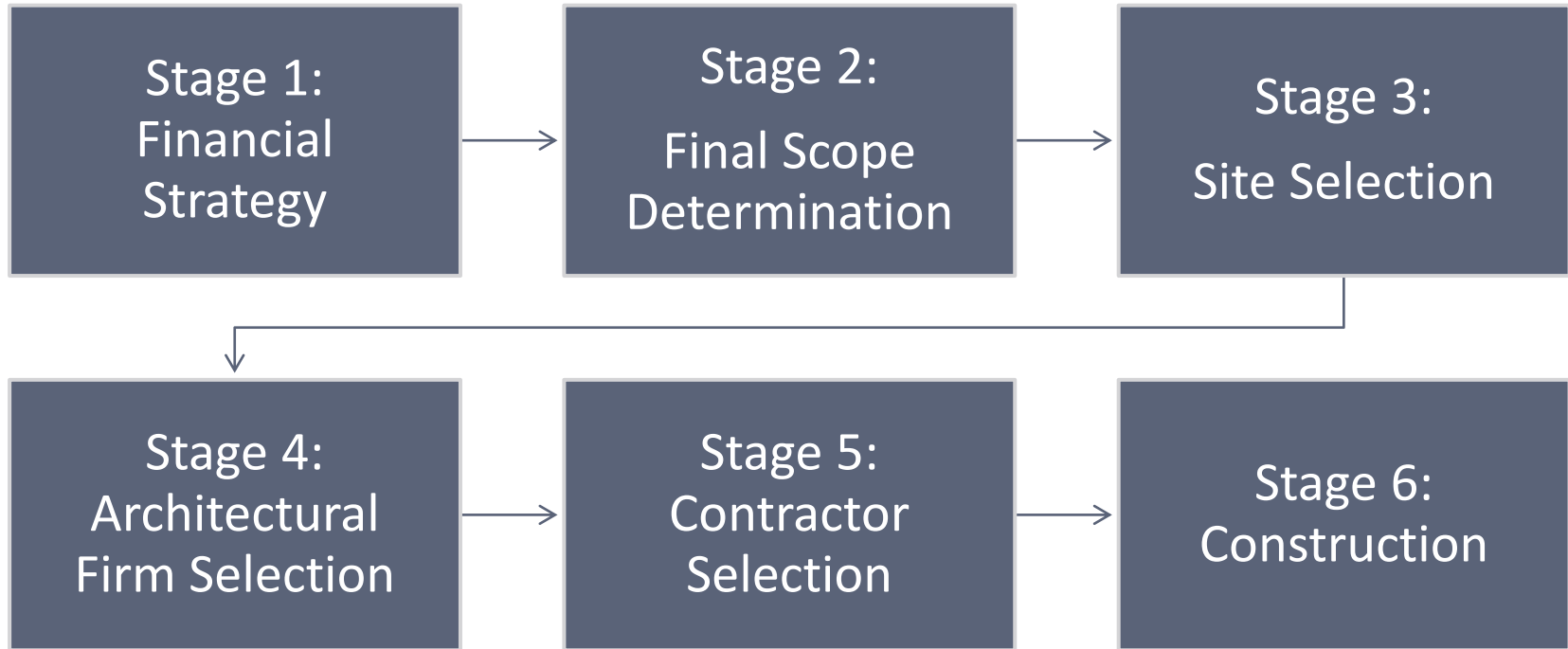


# Masterplan Approach

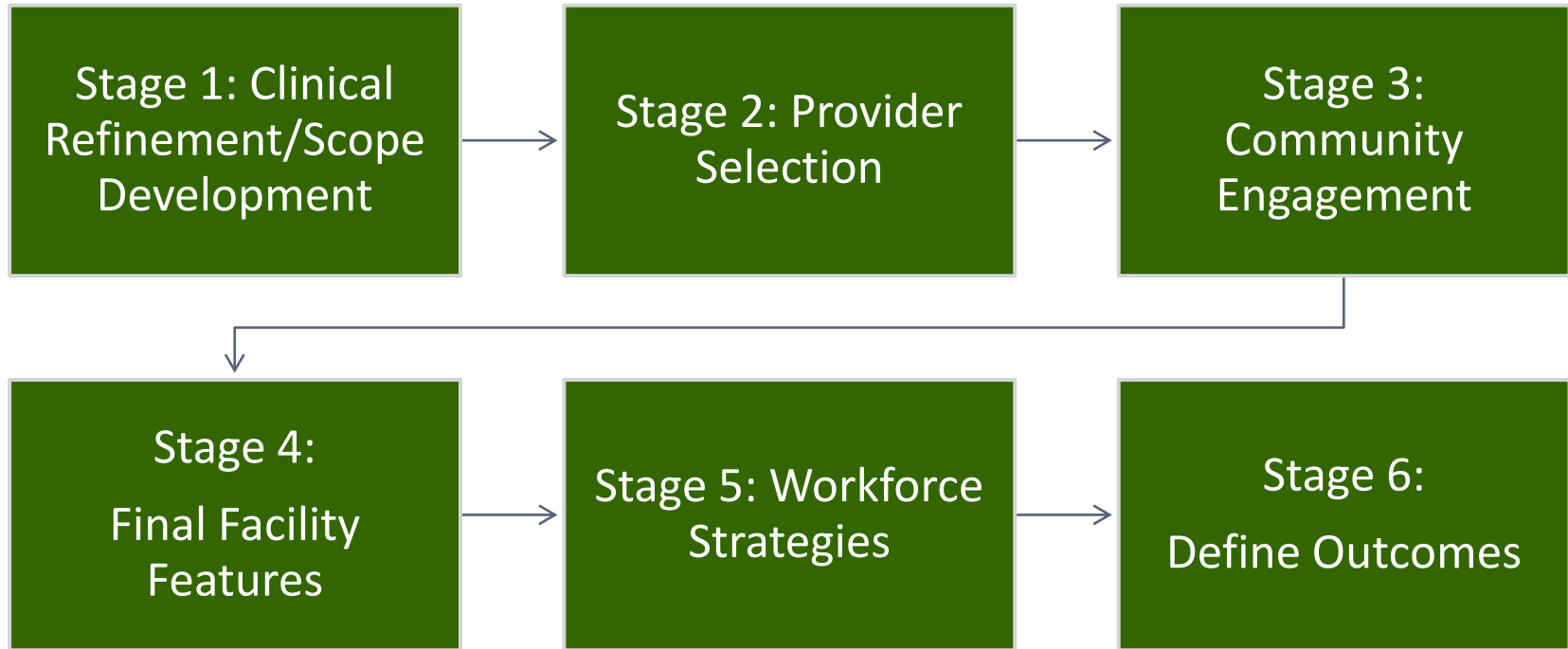
- Highlights project milestones with associated Board of Commissioner:
  - Briefings
  - Input
  - Decisions
- Provides increased detail on implementation approach



# The Path to Construction

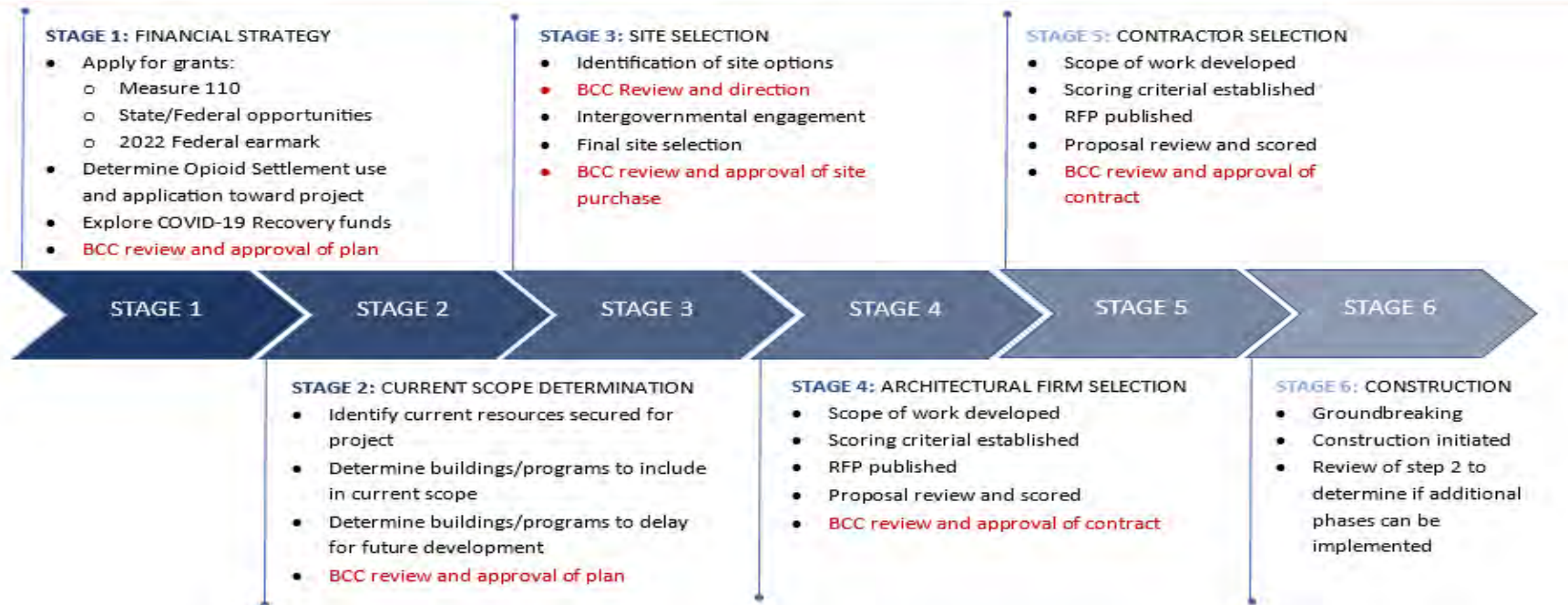


# The Clinical Pathway

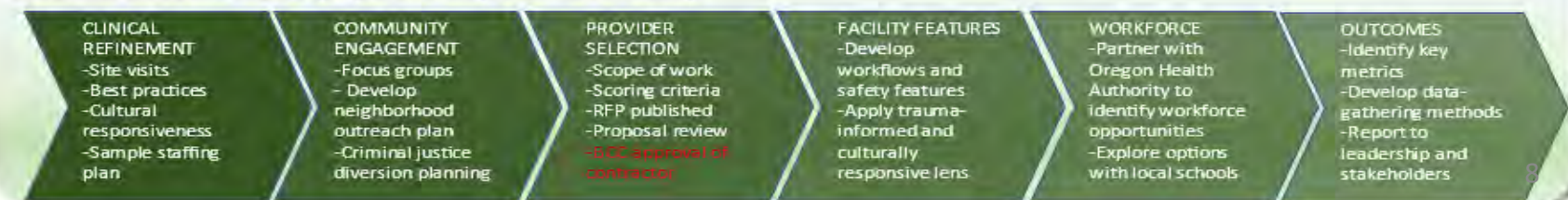


# CENTER FOR ADDICTIONS TRIAGE AND TREATMENT

## Masterplan Implementation



### CLINICAL DEVELOPMENT (in partnership with local CCOs)



# Discussion

# Facility Planning: A Dilemma

- What if site and funding availability don't align with recommendations?
- Can we prioritize most important things and compromise elsewhere?



**Center for Addictions  
Triage and Treatment**  
A Feasibility Study

Core Services	Core Plus Services
<ul style="list-style-type: none"> <li>Assessment and Triage</li> <li>Sobering</li> <li>Withdrawal Management (detox)</li> <li>Crisis Stabilization</li> <li>Residential Treatment</li> <li>Outpatient Stabilization</li> </ul>	<ul style="list-style-type: none"> <li>Outpatient Substance Use Treatment</li> <li>Outpatient Mental Health Treatment</li> <li>Supported Employment</li> <li>Drop-in Center (Flex space)</li> </ul>
Co-Located Services	Community Partner Provided Services
<ul style="list-style-type: none"> <li>Medical Care</li> <li>Dental Care</li> <li>Supported Housing</li> <li>Benefits and Transportation Assistance</li> <li>Pharmacy</li> <li>Crisis Services/Hawthorn Walk-In Center</li> <li>County Behavioral Health Staff</li> </ul>	<ul style="list-style-type: none"> <li>Social Services</li> <li>Primary Healthcare Services</li> <li>Education / Family Support</li> <li>Animal Care</li> <li>Family Justice / Legal Services</li> <li>Many others....</li> </ul>



# Program Development Work Group

## Services Prioritization

- Tier 1 priority: Peer Drop-In Center, Housing Navigation and Access, Outpatient Substance Use Treatment, Outpatient Mental Health Treatment, Crisis Services/Hawthorn
- Tier 2 priority: Supported Employment, Benefits and transportation assistance
- Tier 3 priority: Pharmacy, Medical Care, Dental Care

# Site Attributes

## Where can we compromise?

- What about a split campus approach?
- Where could the program be located?
- Access to public transportation?
- Green space?
- Room for parking?
- Campus approach (vs. single building)?
- Single site vs. multiple sites?
- Empty lot vs. building to renovate?



# Program Development Work Group Site Prioritization

Highest priorities:

1. Located near public transportation
2. Plenty of parking
3. (Tie) Service separation, near population center, single campus

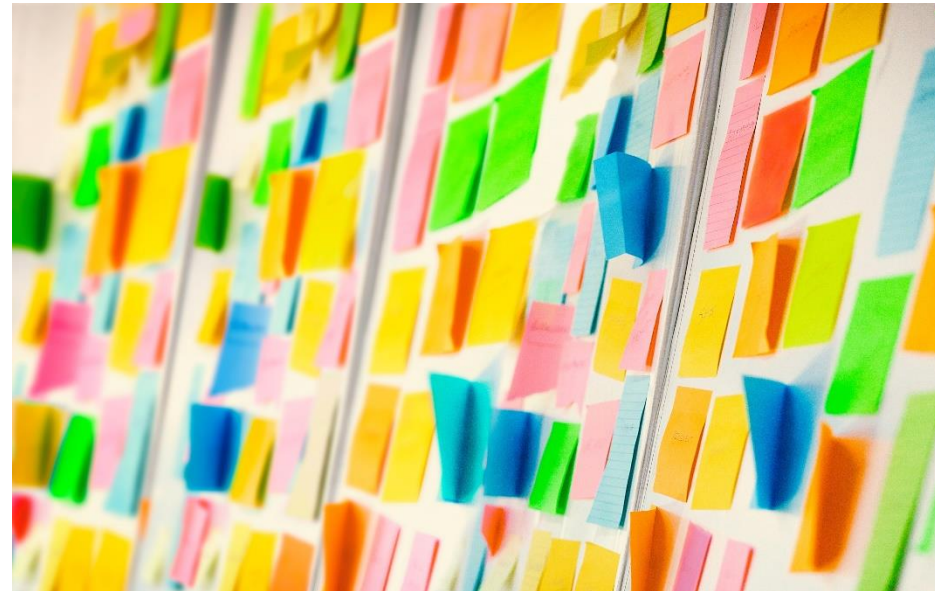
Lowest priorities:

1. Access to nature
2. Easy to get to across whole county



# Planning for next stage:

- Clinical services
- Funding
- Systems integration
- Criminal Justice interface
- Community engagement
- Communications
- Workforce development
- Facility



# Workgroups and Committees

- Leadership Team\*
- Steering Committee\*
- Program Development Work Group\*
- Communications work group\*
- Community Engagement
- RFP Development work group
- Law Enforcement/Criminal Justice Interface work group
- Workforce Development work group

*\* Work groups that already exist*



# Provider Selection

- Focus on selecting provider for core services
- How directive to be?
- Partnership with CCO
- Provider to help with project development work and facility design
- Other service provider selection can occur in later stages



# Next Steps:

- Feasibility Study being updated
- Next phase of work being planned
- July: Board of Commissioner action
- Fall: Revised workgroups reconvene

