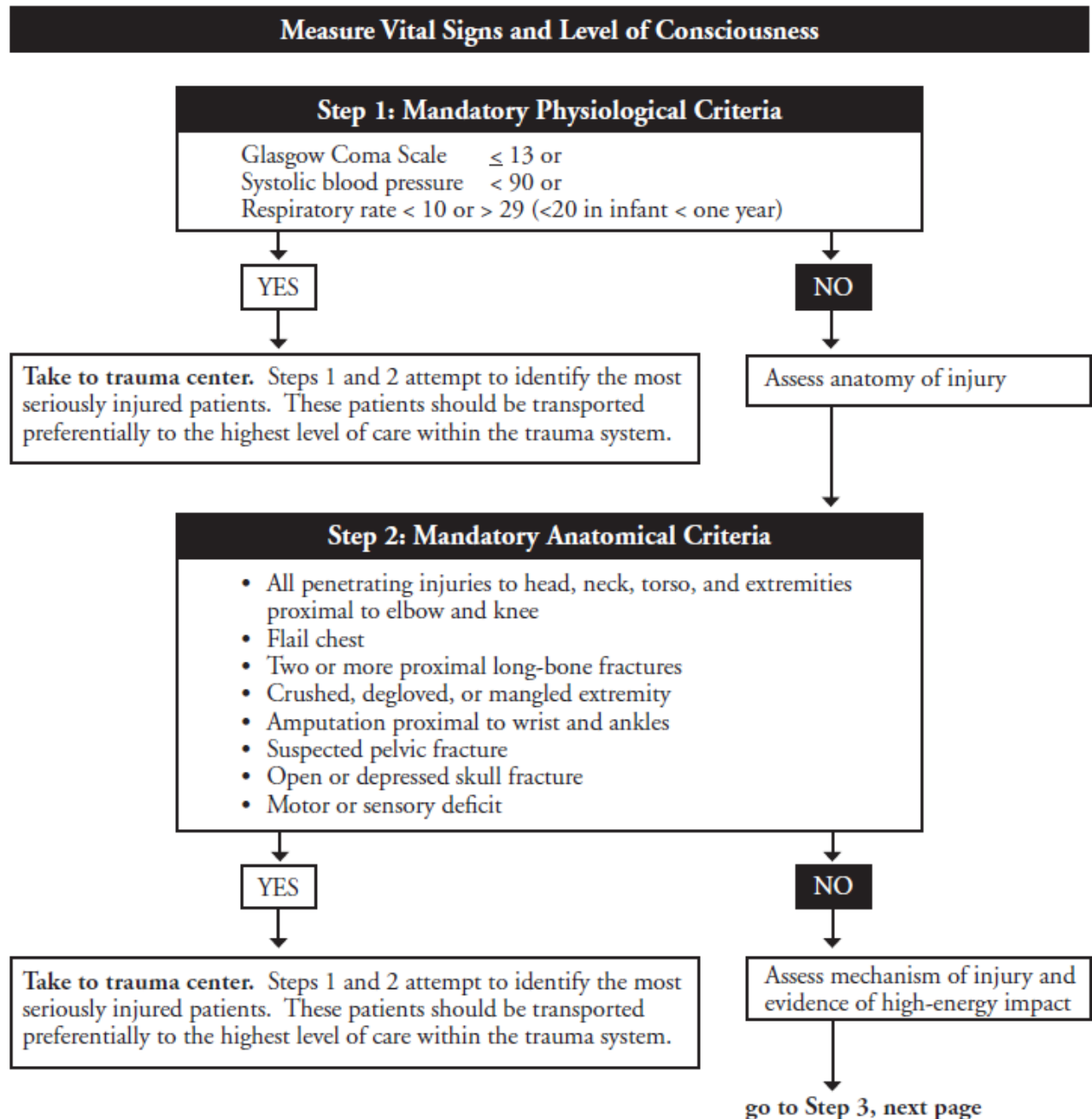
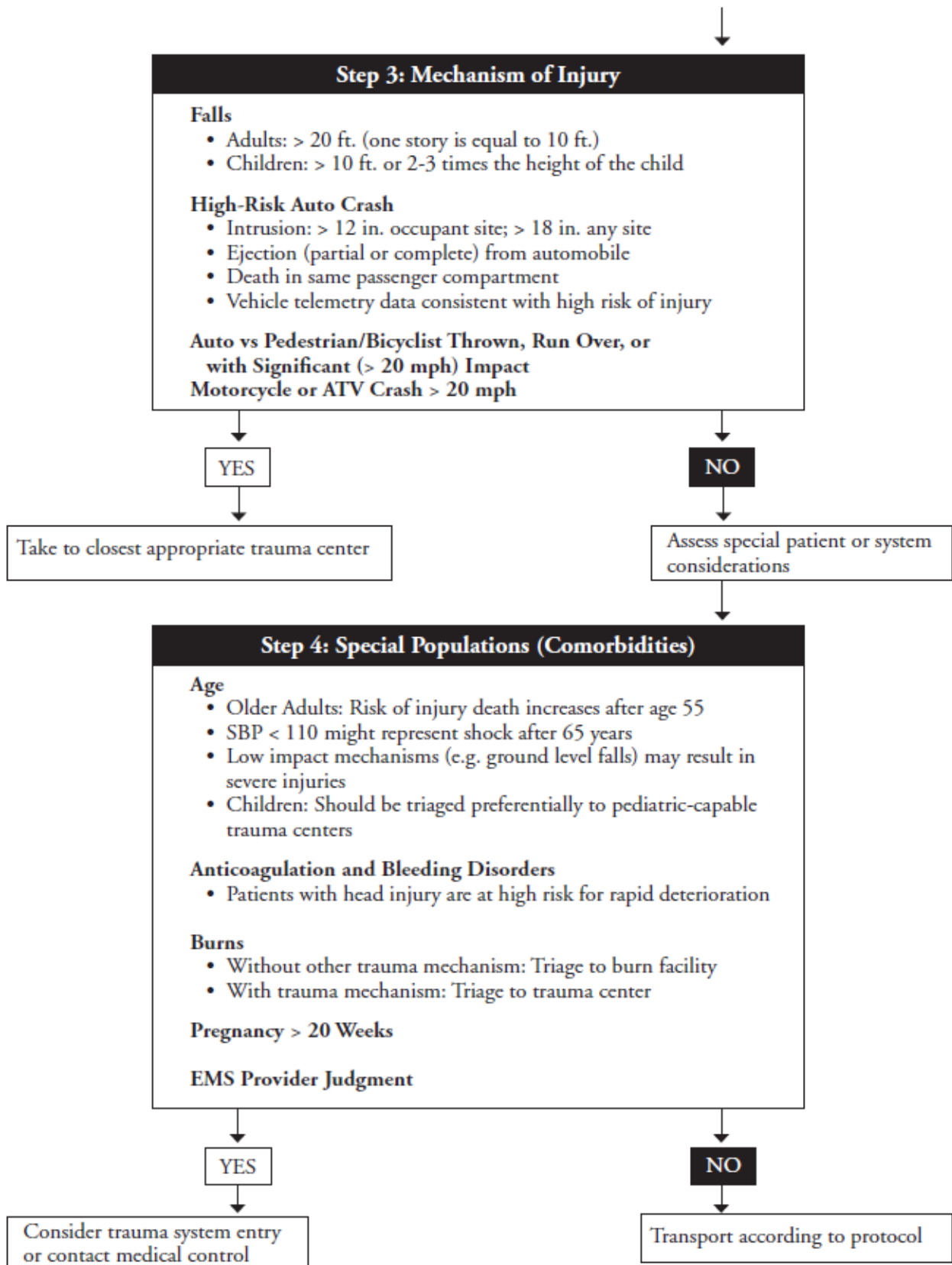


Trauma System

I. PATIENT ENTRY:



Trauma System Guidelines – 60.100



II. **MEDICAL DIRECTION:**

- A. Off-line medical direction for trauma patients is controlled by the Treatment Protocols.
- B. OLMC is provided by Medical Resource Hospital (MRH). OLMC may override off-line medical direction. Any instances where this occurs will be reported to the EMS Office.

III. **COMMUNICATIONS:**

- A. Communications with TCC:
The following information will be provided:
 - 1. Unit number and the location of the incident.
 - 2. Number of patients.
 - 3. Age and sex of the patients.
 - 4. Trauma system entry criteria and vital signs.
 - 5. Glasgow Coma Scale.
 - 6. Trauma tag number.
 - 7. ETA to Trauma Center.
 - 8. Patient destination based on incident location or request.
- B. Communications from TCC or OLMC to the paramedics in the field will be as follows:
 - 1. TCC will inform the paramedic if more information is needed by the trauma center.
 - 2. TCC will inform the paramedic if the chosen trauma center is unable to receive the patient and will assist in designating an alternate destination.
 - 3. In the event that there are multiple Trauma System entries, TCC will assist the paramedic at the scene in determining the destinations of all patients.

IV. **TRAUMA CENTER DESTINATION:**

- A. **Emanuel Hospital Service Area:** Patient origin on or north of: Tualatin Valley Highway beginning at the West city limits of Hillsboro, to Canyon Road, Canyon Road to Highway 26, to I-405, I-405 to NW Lovejoy, NW Lovejoy across the Broadway Bridge to the East bank of the Willamette, and South on the riverbank to Burnside. From this point, all patients North of, but not on the following line are to be transported to Emanuel: East on Burnside to NE Sandy Blvd, Sandy To NE Glisan at its intersection with 21st, and then East on Glisan St. to 242nd Ave in Gresham.
- B. **Oregon Health Sciences University Hospital Service Area:** Patient origin on or South of Glisan St. beginning at 242nd Street in Gresham, West on Glisan St. to Sandy Blvd at its intersection with 21st, Sandy Blvd. to E. Burnside, then West on Burnside to the East Bank of the Willamette, and North along the riverbank to the Broadway Bridge. From this point, all patients South of but not on the following line will be transported to University: West on the Broadway Bridge to Lovejoy, to I-405, to Highway 26 and then South of but not including Highway 26, to Canyon Road, to Tualatin Valley Highway to the west city limits of Hillsboro.

- C. **Patients or Guardians Request:** If the alert, competent patient or his/her competent guardian demands transport to a specific hospital, the EMT must honor that request and notify the TCC immediately.
- D. **Multiple Patients:** From the same scene, all patient destinations are to be that assigned by the above service areas unless the designated Trauma Center advises the TCC that the facility cannot accept additional patients. In this instance, the Trauma Communications Center (TCC) will assist the paramedic in determining patient destinations. If there are more than two critical trauma patients (e.g., intubated, significant trauma) ready to be transported from the same scene, only the first two will be sent to the Level 1 facility designated by catchment area. Subsequent patients shall be directed to the next Level 1 center.
- E. **Diversion to Local Hospital:** If the paramedic is unable to establish an airway, the patient should be transported to the nearest acute care facility. In the event this occurs, TCC should be notified of the diversion.

V. MODE OF TRANSPORT:

An air ambulance should be used when it would reduce total pre-hospital time by 10 minutes or greater. This is usually achieved whenever the ground transport time will exceed 25 minutes (Scene is > 15 miles from Portland, or other circumstances exist).

VI. PATIENT EVALUATION PROTOCOL:

- A. Treatment priority should be approached in this order:
 - 1. Airway Maintenance (Including control of the cervical spine).
 - 2. Breathing.
 - 3. Control of circulation and hemorrhage.
 - 4. Treatment of shock.
 - 5. Neurological examinations.
 - 6. Complete secondary survey.
 - 7. Splinting of fractures.

VII. SCENE TIME:

After gaining access to the patient, scene time should not exceed ten minutes for any patient who is entering the Trauma System. Plan to start IV/IOs and initiate other care once en-route to the hospital if necessary.