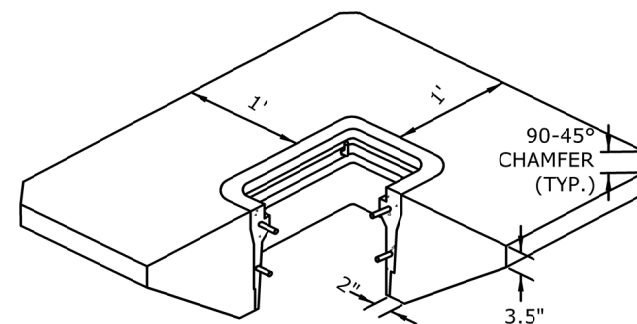


TRAFFIC SIGNAL/ILLUMINATION JUNCTION BOX

NOT TO BE USED IN TRAVEL LANES, SHOULDERS OR AREAS EXPOSED TO TRAFFIC.

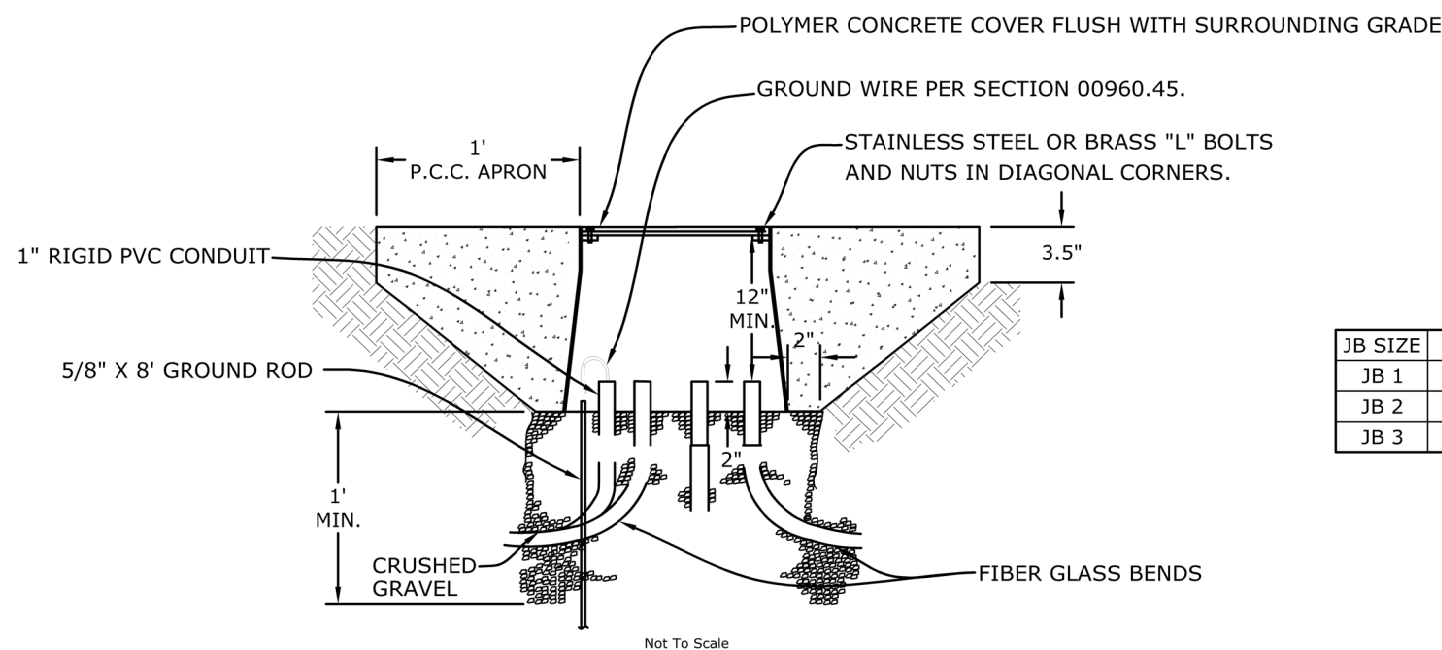


CONCRETE APRON AROUND JUNCTION BOX

(APPROX. 7 FT.³ CONCRETE IN NEAT SECTION)

GENERAL NOTES:

1. CONDUITS SHOWN ARE FOR EXAMPLE ONLY. ADDITIONAL CONDUITS MAY BE REQUIRED AS SHOWN ON THE PLAN SHEETS.
2. FOR CONDUIT END TREATMENT REFER TO ODOT STANDARD SPECIFICATIONS FOR CONSTRUCTION, LATEST EDITION (SEE SECTION 00960.42) AND OREGON STANDARD DRAWING LATEST EDITION (TM472).
3. IN JUNCTION BOXES WHERE THERE ARE EXISTING WIRES AND CONDUITS, THE CONTRACTOR SHALL ADJUST THEM AS NECESSARY TO MAINTAIN THE SYSTEM WHEN WORK IS COMPLETE.
4. JUNCTION BOXES AND COVERS SHALL BE RATED TIER 15 ACCORDING TO ANSI/SCTE 77-2007.
5. JUNCTION BOXES SHALL BE INSTALLED BEHIND THE SIDEWALK OR IN THE PLANTER STRIP WHEN POSSIBLE.
6. REFER TO SPECIAL PROVISIONS AND STANDARD SPECIFICATIONS SECTION 00960, 00970, AND 02920 FOR APPROVED EQUIPMENT AND ADDITIONAL REQUIREMENTS.
7. JUNCTION BOXES SHALL BE FLARED WITH SIZE AS SHOWN ON PLANS.
8. FURNISH ELECTRICAL SPLICE MATERIAL MEETING THE FOLLOWING REQUIREMENTS:
SPLIT BOLT - MADE OF SILICON BRONZE TO SECURELY JOIN THE WIRES BOTH MECHANICALLY AND ELECTRICALLY.
HEAT-SHRINK TUBING - SURFACE-IRRADIATED TUBE COMPLYING WITH UL 486, RATED AT 194°F WITH 600 V INNER MELTING WALL OR LINER TO PROVIDE VOID-FREE ENCAPSULATED INSULATION.
INSULATING RUBBER TAPE - ELECTRICAL GRADE, NONDRYING, RUBBER BASED, ELASTIC TYPE CONFORMING TO ASTM D4388.



JUNCTION BOX INSTALLATION WITH APRON (NEAR ILLUMINATION POLE)

NOT TO SCALE

JB SIZE	W	L	D
JB 1	11"	18"	12"
JB 2	13"	24"	18"
JB 3	17"	30"	18"

NOTES:

1. ILLUMINATION CIRCUIT WIRES ARE NOT SHOWN. SEE ILLUMINATION PLANS.
2. ILLUMINATION CIRCUITS SHALL BE SPLICED ACCORDING TO GENERAL NOTE 8.

ACCOMPANIED BY STANDARD DRAWING 6810, 6820, AND 6833

WASHINGTON COUNTY
 DEPARTMENT OF LAND USE & TRANSPORTATION
 ENGINEERING SECTION
TRAFFIC ENGINEERING JUNCTION BOX DETAILS
 WASH. CO. # 6831
 EFFECTIVE DATE: 06/01/2022
 PLOT STAMP: 06/01/22 5:16P ANTHONYD
 CAD: 6831.DWG