

ADA Push Button New Construction Inspection Form For TS and PS

North-South Road Name

Project No.

Sheet No.

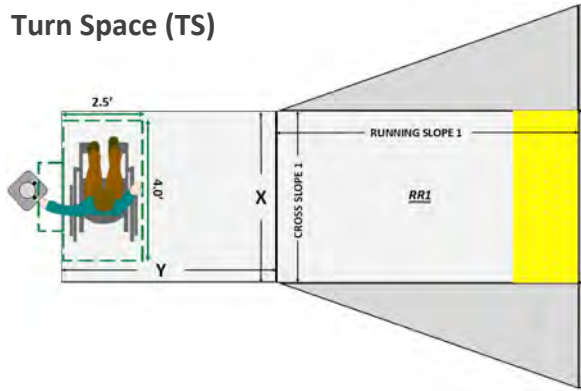
Intersection No.

Calibration Date

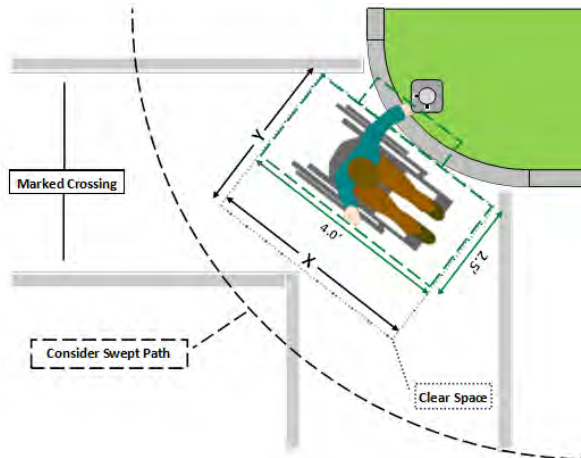
East-West Road Name

Corner Position Button Position

Turn Space (TS)



Paved Shoulder (PS)



For other Clear Space Surface Types, see *Exhibit "C"*.

¹ Push Buttons may have a Design Exception for a parameter allowing for deviations from set standards. In such case, the functional condition is good given the other parameters are still within the defined standards.

Note: Pass/Fail boxes must be manually checked

PUSH BUTTON DETAILS

All fields under Push Button Details are information only fields and are not factored into functional condition.

Indicator (B, S)

B=Beacon, S=Signal

Audible Pedestrian Signal (N, PT, SM)

N=None, PT=Percussive Tone, SM=Speech Message

Locator Tone (Y, N)

Y=Yes, N=No

Signal Head (CD, N, PIC, TXT)

CD=Countdown, N=None, PIC=Pictogram, TXT=Text

Button Type (H, O, S)

H=H-Frame, O=Other, S=Standard

Arrow Surface (FS, N, TC, VB)

FS=Flush, N=None, TC=Tactile, VB=Vibrotactile

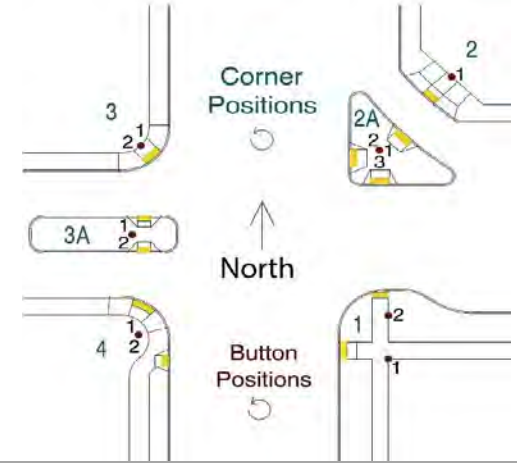
CLEAR SPACE DETAILS

All fields under Clear Space Details are required fields and are factored into functional condition.

Surface Type (TS, PS)

TS=Turn Space, PS=Paved Shoulder

	Pass	Fail
Reach Range	≤ 0.83'	> 0.83'
(Ft.) Height	3.5' - 4.0'	< 3.5' or > 4.0'
(Ft.) Width X	≥ 4.0'	< 4.0'
(Ft.) Length Y	≥ 2.5'	< 2.5'
Slope X	≤ 2.0%	> 2.0%
Slope Y	≤ 2.0%	> 2.0%



PE Stamp
(required for private development)

Comments:

Inspector's Signature _____ Date (mm/dd/yy) _____

Print name clearly _____ Certification No. _____

Company/Agency _____

Push Button Images

Attached photos must be in .pdf format in order to be placed