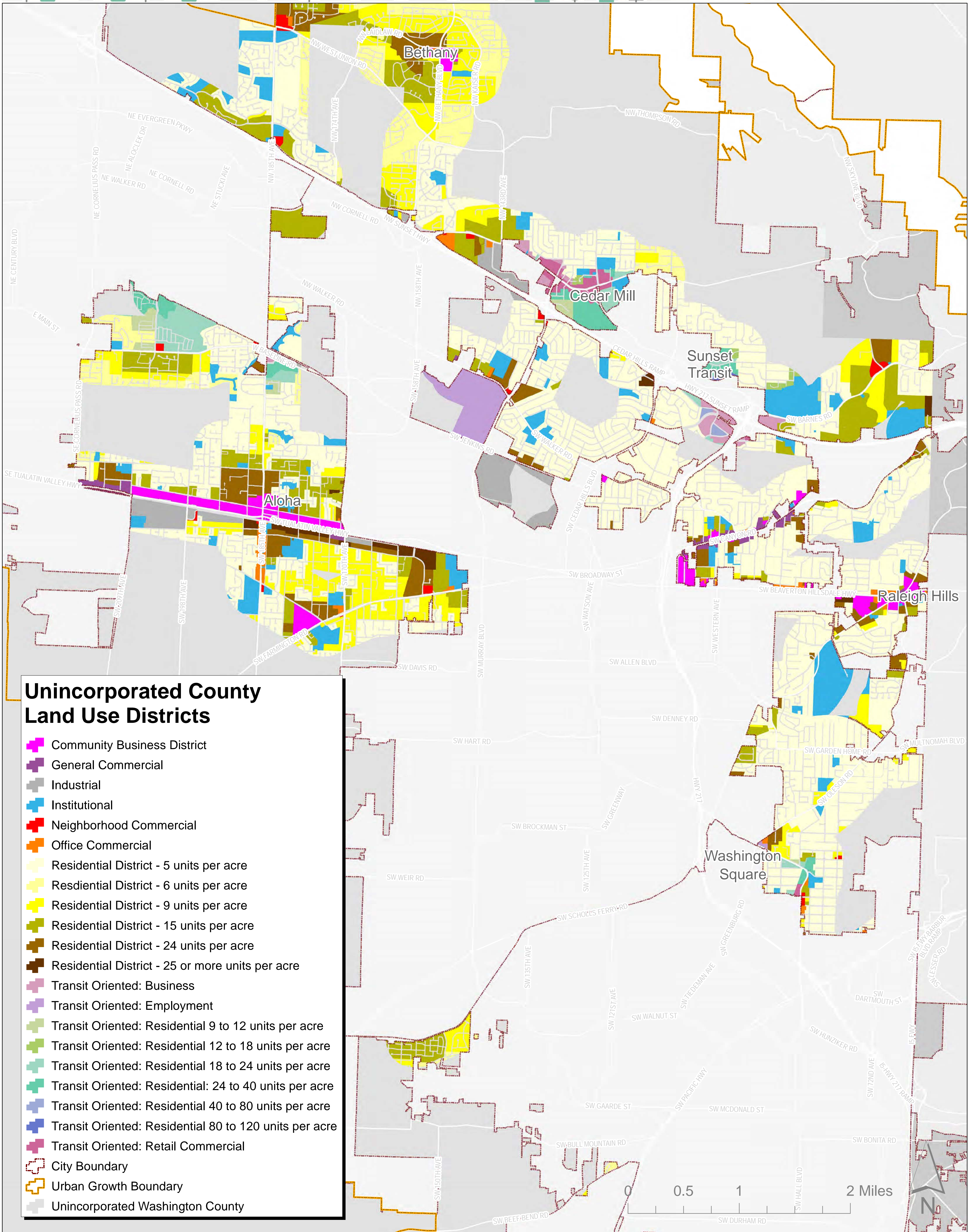




HOUSING OPEN HOUSE



Unincorporated County Land Use Districts

- Community Business District
- General Commercial
- Industrial
- Institutional
- Neighborhood Commercial
- Office Commercial
- Residential District - 5 units per acre
- Residential District - 6 units per acre
- Residential District - 9 units per acre
- Residential District - 15 units per acre
- Residential District - 24 units per acre
- Residential District - 25 or more units per acre
- Transit Oriented: Business
- Transit Oriented: Employment
- Transit Oriented: Residential 9 to 12 units per acre
- Transit Oriented: Residential 12 to 18 units per acre
- Transit Oriented: Residential 18 to 24 units per acre
- Transit Oriented: Residential: 24 to 40 units per acre
- Transit Oriented: Residential 40 to 80 units per acre
- Transit Oriented: Residential 80 to 120 units per acre
- Transit Oriented: Retail Commercial
- City Boundary
- Urban Growth Boundary
- Unincorporated Washington County