



# Saltzman Road Improvement Project

(Laidlaw Road to Bayonne Lane)

Aug. 26, 2020  
Project Advisory Committee

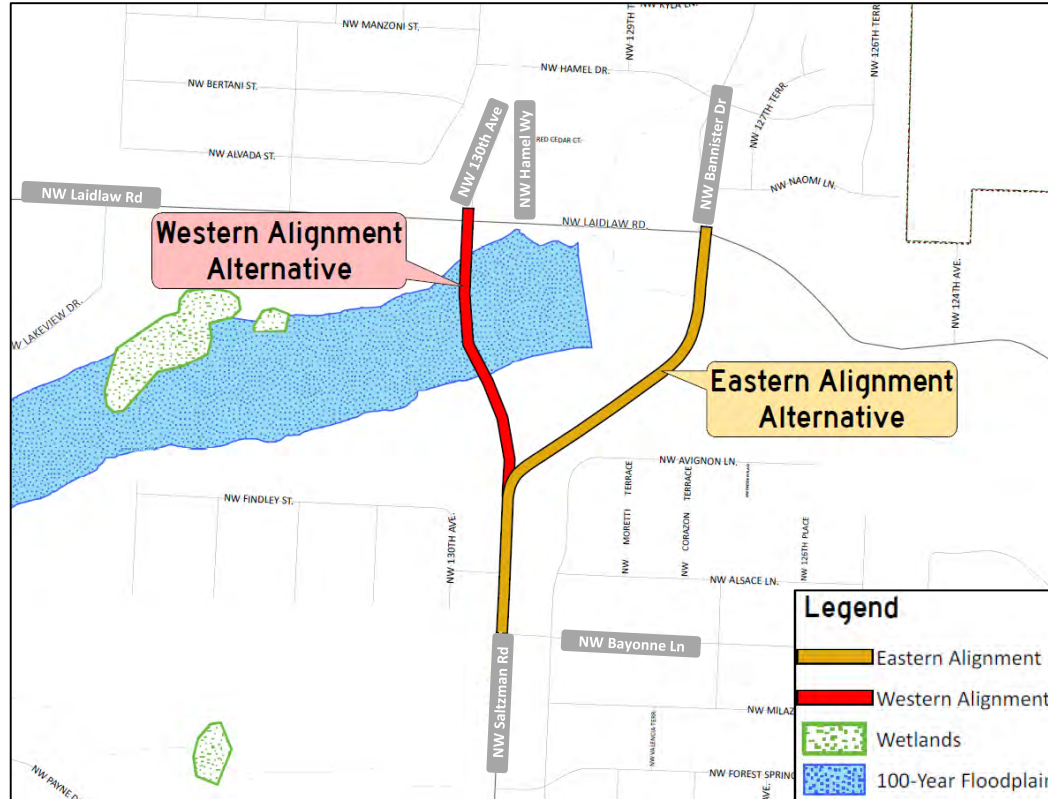
# History

- Transportation System Plan
  - Saltzman Road to 130th Avenue
  - Current Saltzman Road alignment
- Community Advocacy
  - CPOs and Bethany Neighborhood Coalition advocated for an improved/new Saltzman Road alignment due to road safety concerns

# History (continued)

- Board of Commissioners
  - March 2016: Approved a letter of intent to fund Saltzman Road improvements
  - October 2016: Adopted the MSTIP 3e plan, including funding for Saltzman Road
- Capital Project Services
  - Survey, studies, alternatives analysis kicked off
  - Project Advisory Committee formed

# Alignment Alternatives



# Existing Conditions

- East Alignment (current)
  - Safety
  - Existing homes
  - Cross section
  - Creek crossing
- West Alignment
  - Wetlands
  - THPRD property
  - Floodplain
  - Connection to 130th Avenue

# Criteria for Alternatives Analysis

- Meeting County Design Criteria
- Construction Costs
  - Road
  - Bridge
  - Utilities
- Right-of-Way
  - Impacts
  - Existing

# Criteria for Alternatives Analysis

(continued)

- Traffic
  - Connectivity
  - Intersection spacing
- Next steps

# Schedule

- Fall 2020
  - Project Advisory Committee recommends alignment
- Early 2021
  - Board selects alignment
- Spring 2021
  - Bike/Pedestrian Facilities alternatives selection



# Schedule (continued)

- Fall 2021
  - Finalize project footprint, ROW acquisition
- Summer 2022
  - Final design complete
- Fall 2022
  - Bid for construction