



WASHINGTON COUNTY SHERIFF'S OFFICE

Conserving the Peace Through Values Driven Service
Sheriff Pat Garrett

PRESS RELEASE

Case# 50152441289

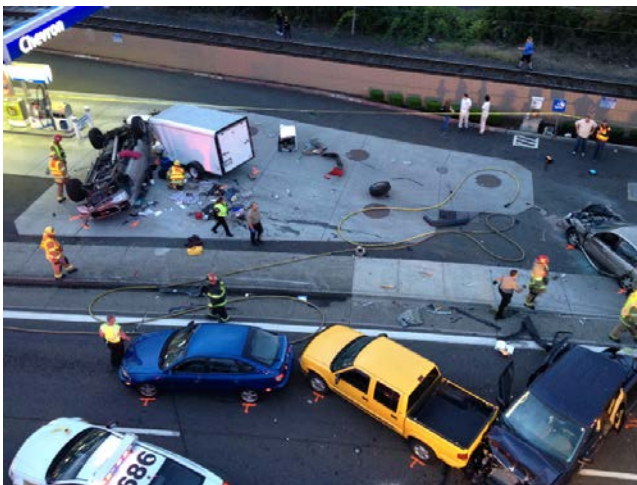
Hillsboro Woman Dies in Seven-Vehicle Crash

September 1, 2015—Sheriff's Deputies responded to a crash involving seven vehicles which left one woman dead. There were at least seven additional people transported with various injuries.

On September 1, 2015, at 7:01 p.m., Washington County Sheriff's Deputies were called to Tualatin Valley (TV) Highway, west of SW 185th Avenue, concerning a multi-vehicle crash.

Sheriff's Deputies arrived and discovered a 2002 GMC pickup that was pulling a trailer, upside-down in a Chevron gas station parking lot. There were six other vehicles, several with extensive damage, strewn within a 150 foot area.

Deputies determined that the GMC pickup, driven by Kerry Wagner, 45, from Hillsboro, was traveling eastbound on SW TV Highway when it failed to brake for stopped traffic. The GMC pickup was reportedly traveling at a high rate of speed when it crashed into the vehicles stopped for the traffic light at SW 185th Avenue.



Sheriff's Deputies learned that one of the first vehicles struck was a 1995 Honda Civic. Cassandra Stolzenberger, 20, from Hillsboro, was the front passenger and deceased at the scene. There were seven other people transported to local hospitals, some with critical injuries. There were no children injured in this incident.

Washington County CART assisted with the investigation. The roadway will be closed until about 2:00 a.m. to gather evidence and document the scene.

Witnesses reported the GMC pickup was driving erratically prior to the crash.

Investigators have not yet determined what caused Mr. Wagner to crash into the vehicles. This case is still under investigation. The Sheriff's Office is asking that anyone who may have witnessed the truck prior to the crash to please call 503-629-0111 and report their observations.