



WASHINGTON COUNTY SHERIFF'S OFFICE

Conserving the Peace Through Values Driven Service
Sheriff Pat Garrett

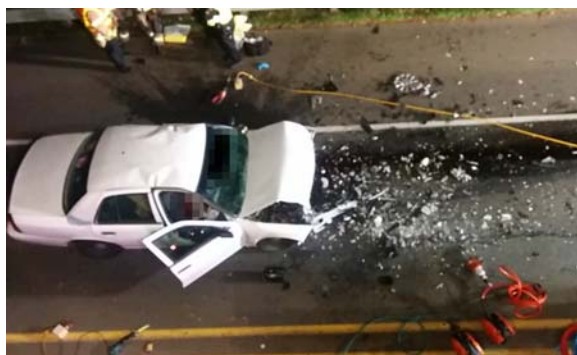
PRESS RELEASE

Case# 153260787

Lafayette Man Dies in Head-on Crash

November 22, 2015—Sheriff's Deputies responded to a crash where a vehicle crossed the center line and collided with another vehicle. One man did not survive his injuries.

On November 22, 2015, at 6:52 p.m., Washington County Sheriff's Deputies were called to SW Roy Rogers Road south of SW Bull Mountain Road concerning a head-on crash.



Deputies arrived and found a 2002 Ford Crown Victoria with severe front damage facing northbound in the southbound lane on SW Roy Rogers Road. Deputies determined that the Ford had been northbound on SW Roy Rogers Road when it crashed head-on into a 2013 Nissan Sentra that was traveling southbound. The Nissan also had severe front damage and was knocked about 100 feet, stopping sideways against a guardrail.

Sheriff's Deputies found that Cristopher Michels, 41, from Lafayette, was the driver of the Ford. He was pronounced deceased at the scene. The Nissan was driven by Maria Cervantes-Acero, 66, with her grandson David Gonzales-Cervantes, 19, as the front passenger. They are both from Newberg. They were both listed in serious condition and were transported by ambulance to OHSU.

Deputies were not able to preliminarily determine why Mr. Michels was driving in the oncoming lane. There were no signs of impairment or that Mr. Michels attempted to steer or stop his car to avoid the collision.

Roy Rogers Road was closed for about three hours to gather evidence and document the scene. Investigators have not determined if there were other factors that contributed to this crash. This case is still under investigation.