



WASHINGTON COUNTY SHERIFF'S OFFICE

Conserving the Peace Through Values Driven Service
Sheriff Pat Garrett

PRESS RELEASE

Case #50-161980891

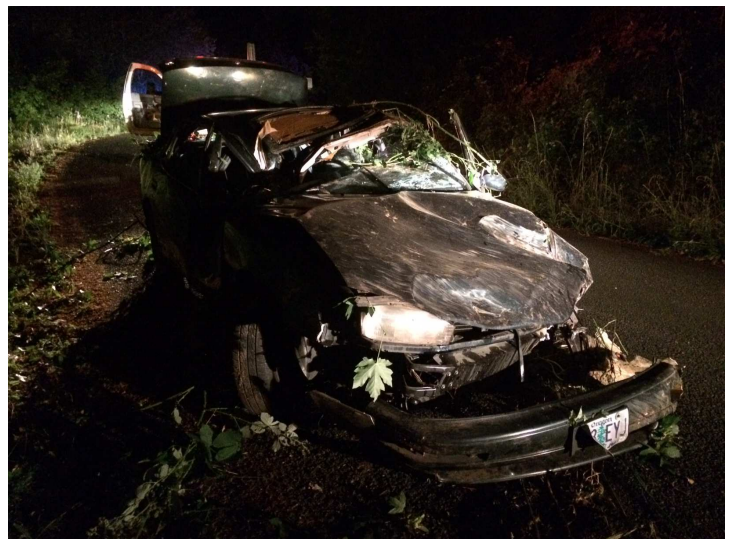
Man Arrested After Passenger Injured in Suspected DUII Crash

July 17, 2016—Sheriff's Deputies responded to a single vehicle crash in which a passenger sustained serious injuries. The driver of the vehicle was arrested for multiple crimes.

On July 16th, 2016 at 7:32 p.m., Washington County Sheriff's Deputies were called to a single vehicle crash in the 34000-block of SW Riedweg Road. When Sheriff's Deputies arrived, they found a green 1992 Toyota Camry on its top and down a ravine. Responding deputies located one of passengers and learned that the driver and a second passenger left the scene on foot. The two men who left the scene reportedly flagged down a car for help leaving the area. A few minutes later, the two were returned to the scene by the Good Samaritan.

Sheriff's Deputies determined that Randy Lopez-Perez, 22, of Beaverton was driving the Toyota at a high rate of speed and failed to negotiate a curve, causing the vehicle to roll down a ravine. Jesse Tarpley, 23, of Cornelius, was a passenger in the Toyota and was transported to OHSU with serious injuries.

The Washington County Crash Analysis Reconstruction Team (CART) responded to gather evidence and document the scene.



Randy Lopez-Perez was lodged at the Washington County Jail. He was charged with Third Degree Assault, DUII, Reckless Driving, and Reckless Endangering.